



孕龍科技股份有限公司
ZEROPLUS TECHNOLOGY CO.,LTD

Instrument Business Department

USB Module Specification

Version: V1.0

Content

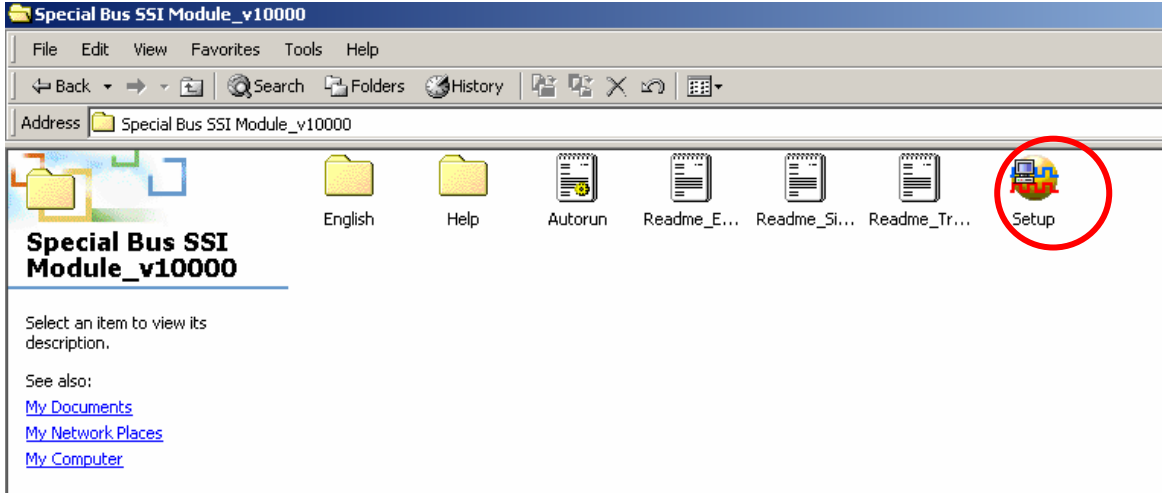
1	Software Installation	3
2	Human-machine Interface	7
3	Operating Instructions	9

1 Software Installation

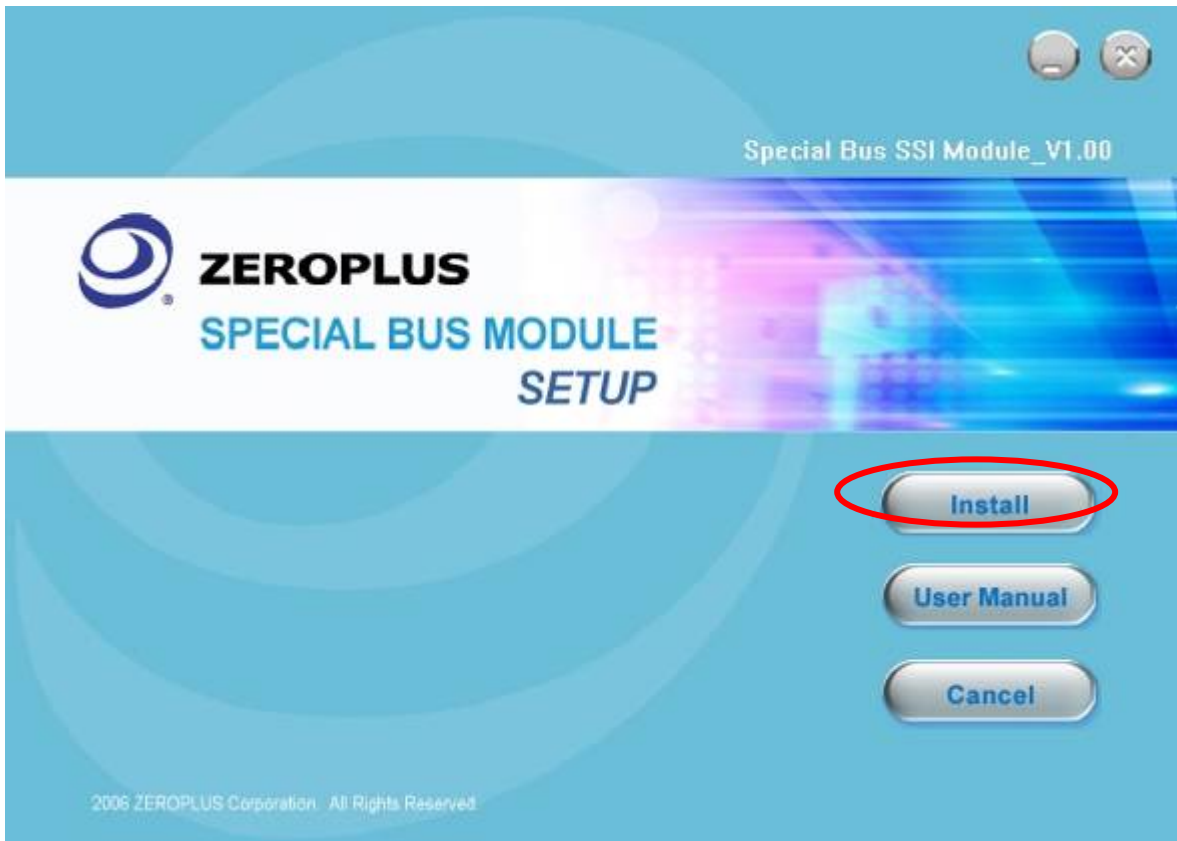
Please setup software according to the following steps.

✘ The installed steps to setup all buses are in the same, you can complete installation by following procedures. Below images are examples to install **SSI buses**.

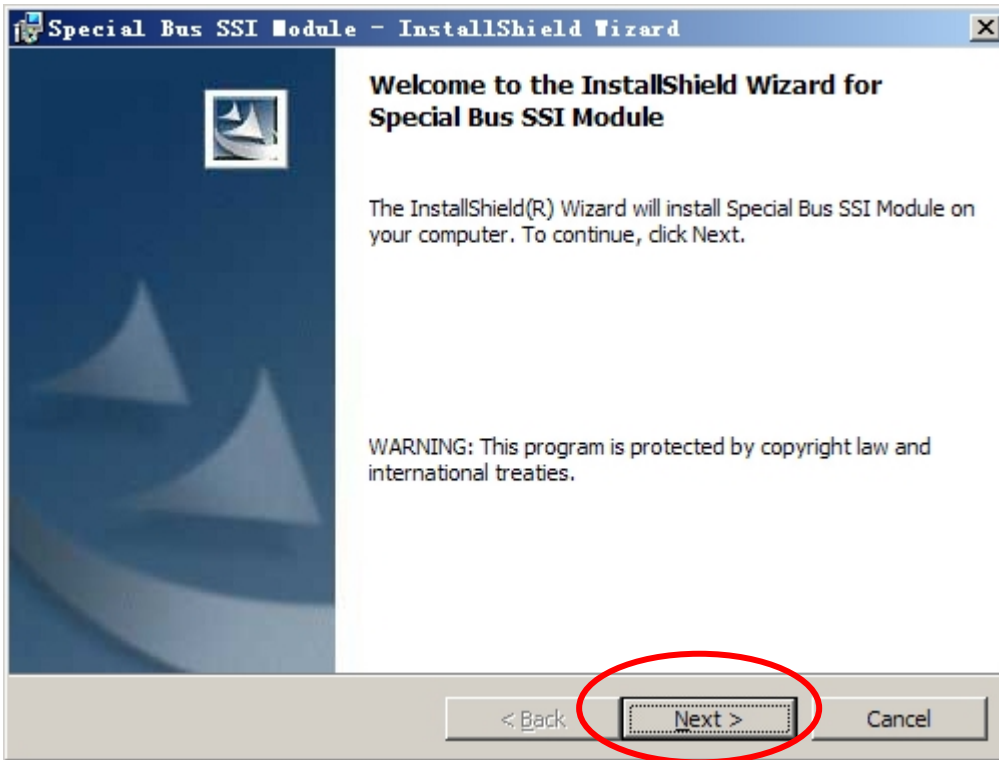
STEP 1. Install MILLER Bus Module



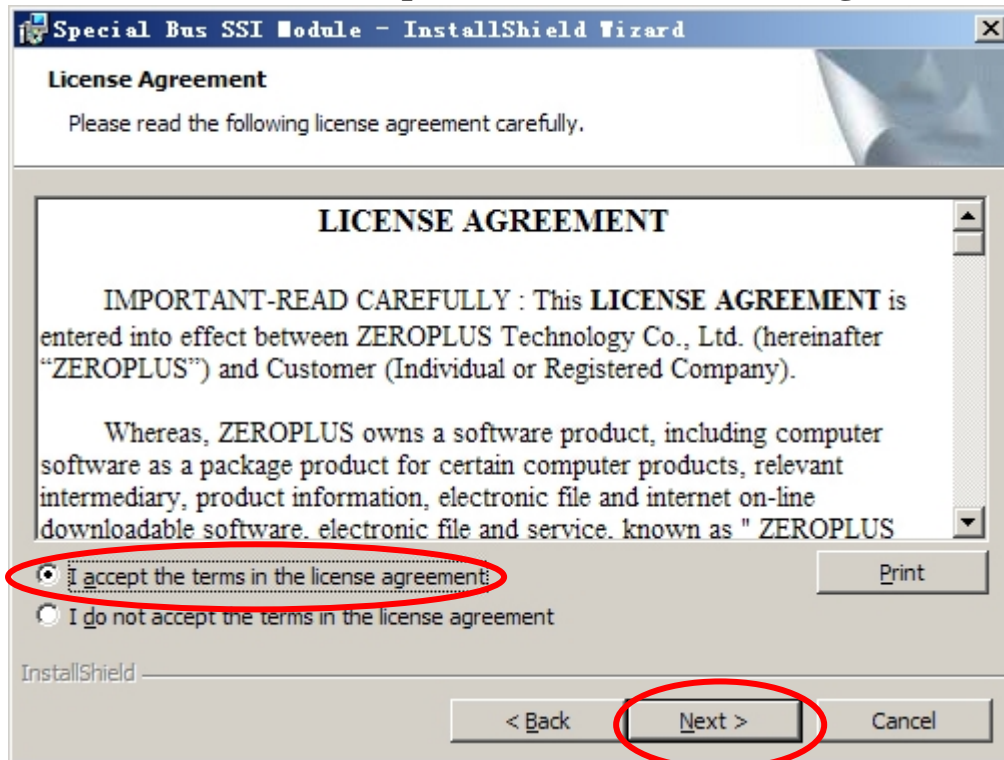
STEP 2. Click Install



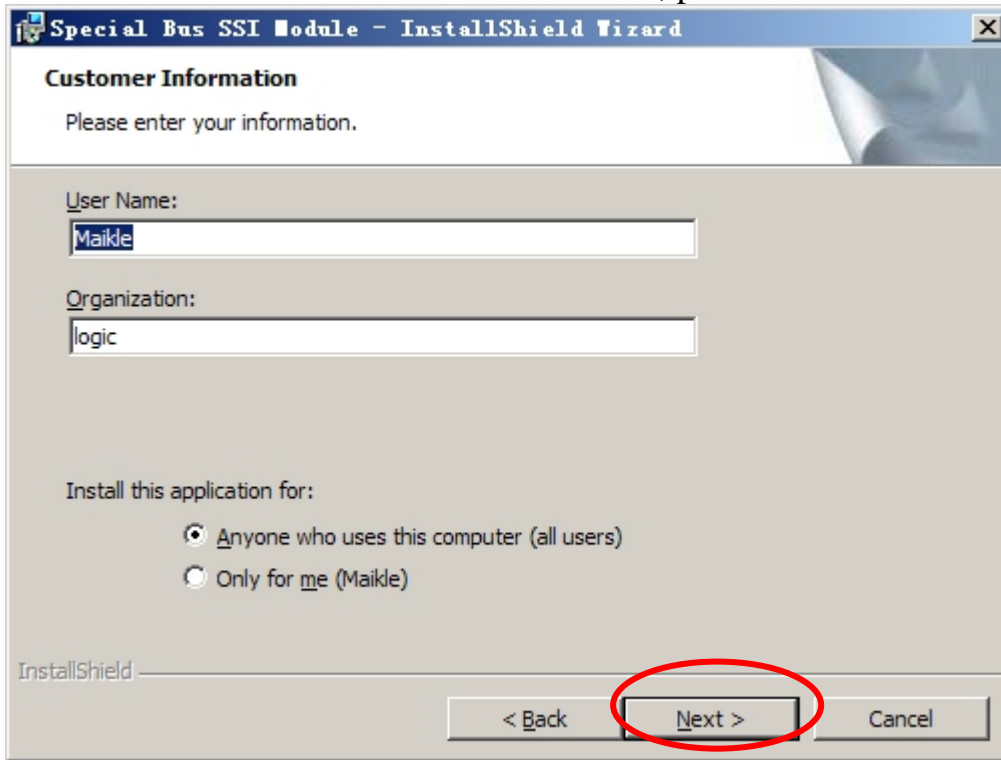
STEP 3. Click Next



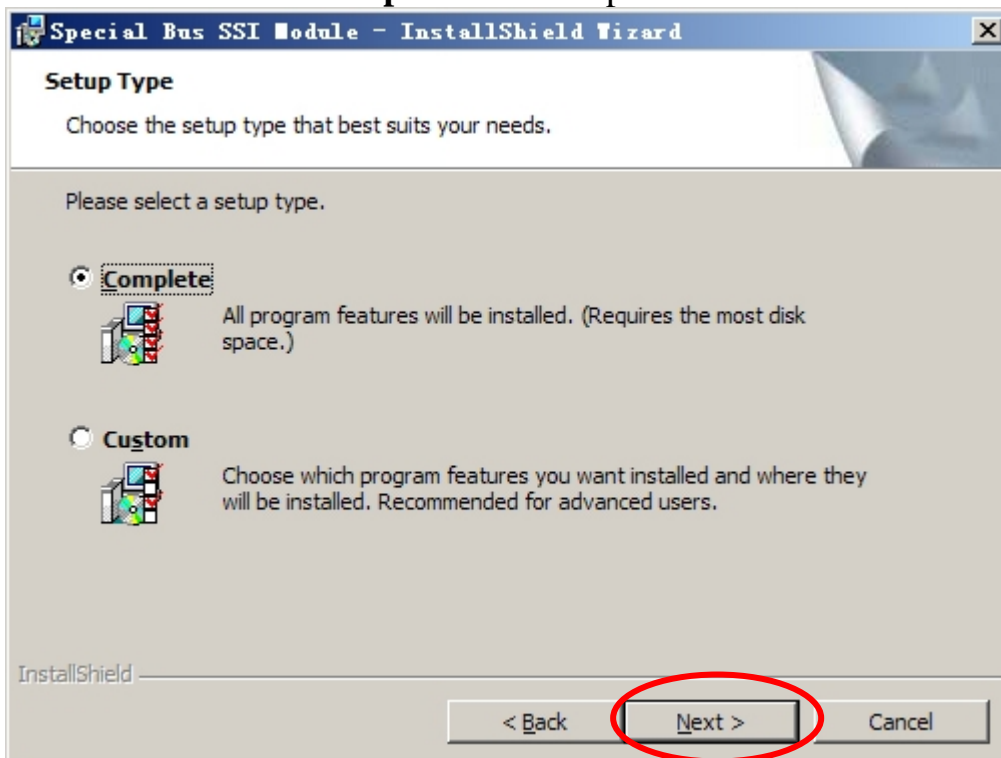
STEP 4. Select I accept the terms in the license agreement and then press Next



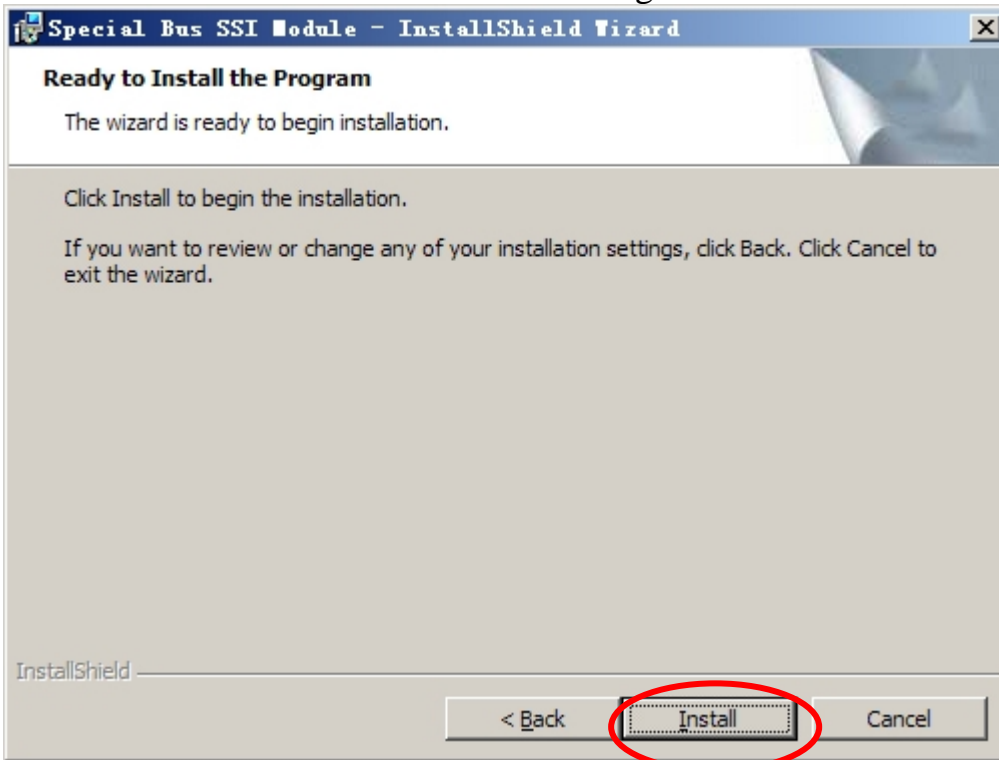
STEP 5. Fill in User Information. Then, press **Next**



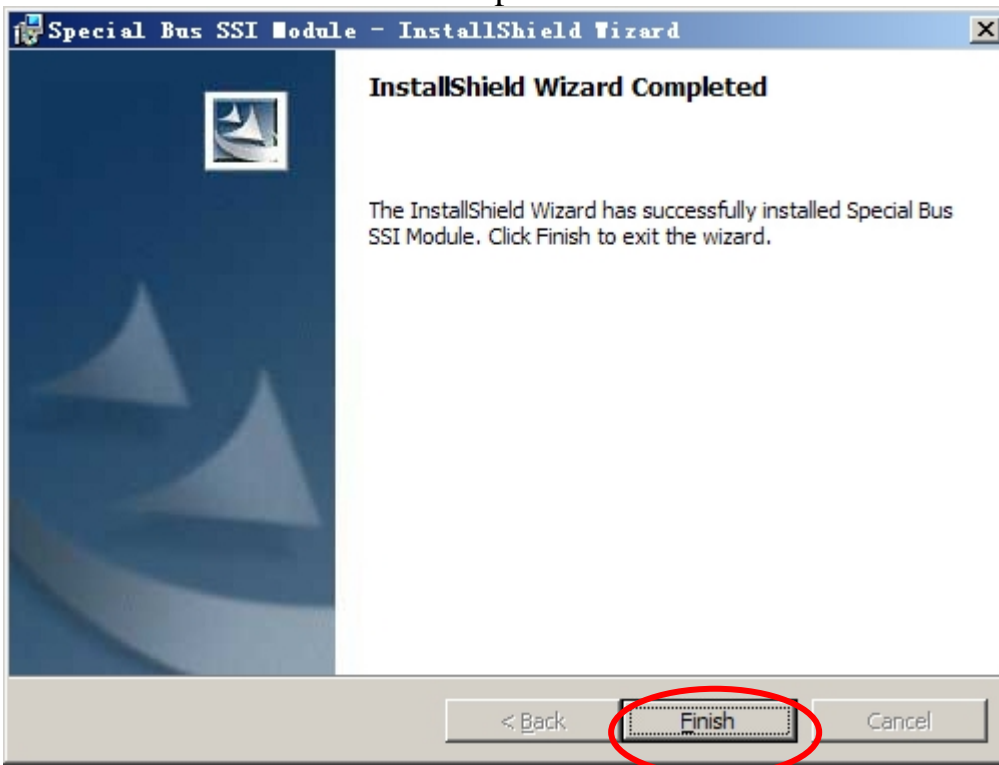
STEP 6. Select **Complete** and then press **Next**



STEP 7. Press **Install** to start installing



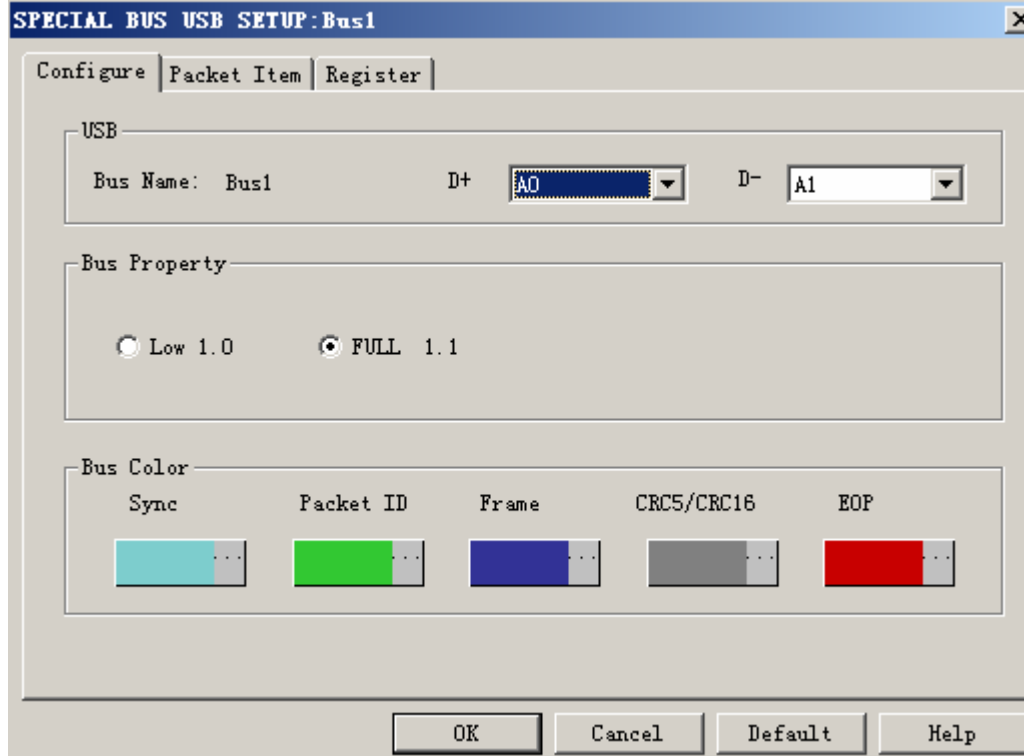
STEP 8. Press **Finish** to complete installation



2 Human-machine Interface

In the configuration, please refer to image below to select options of setting USB

USB Setup Dialog Box



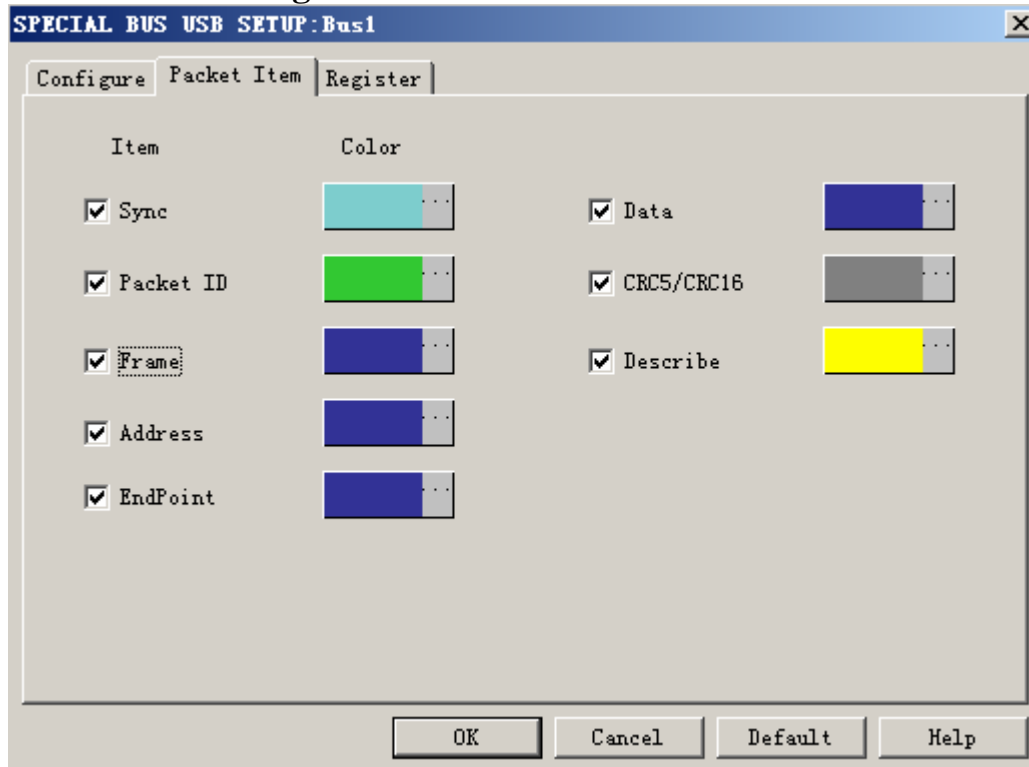
USB Data Channel Select: USB has two differential data Lines, they are D+ and D-.

Bus Setting: USB can analyze two modes, they are Low-speed 1.5M and Full-speed 12M.

Bus Color Setup: The bus color are used to recognize every packet sub-item, furthermore, the error packet displays in Turkey red as the figure above.

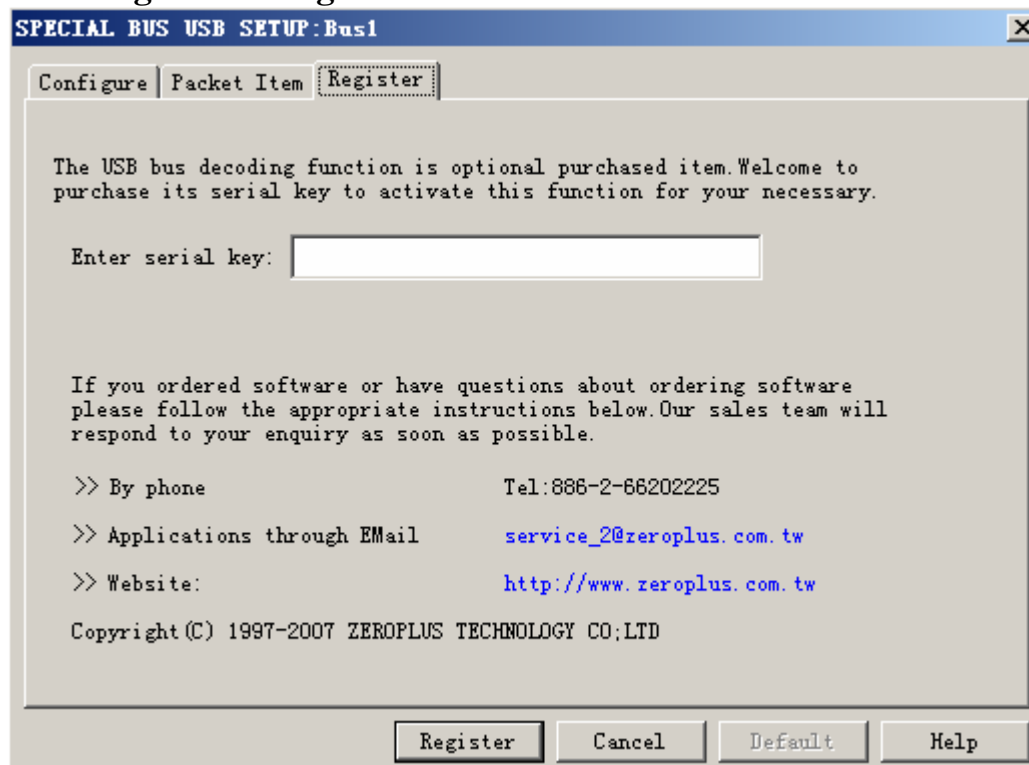
Display Direction of DATA Bit and CRC: The direction display has been assured, when the module was designed, Data is Unit Backward in byte, and the display result of CRC is the same to the transmission direction

USB Packet Dialog Box



Package color can be varied by user.

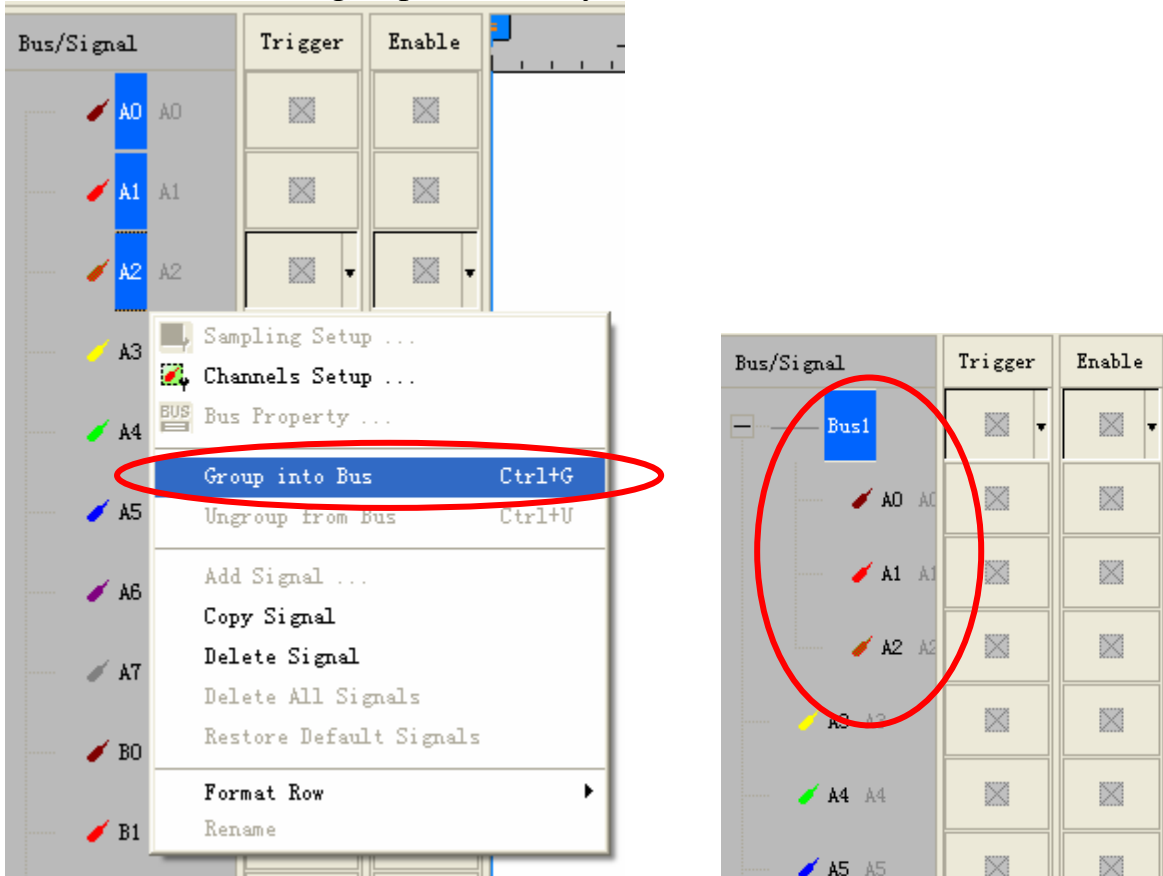
USB Register Dialog Box



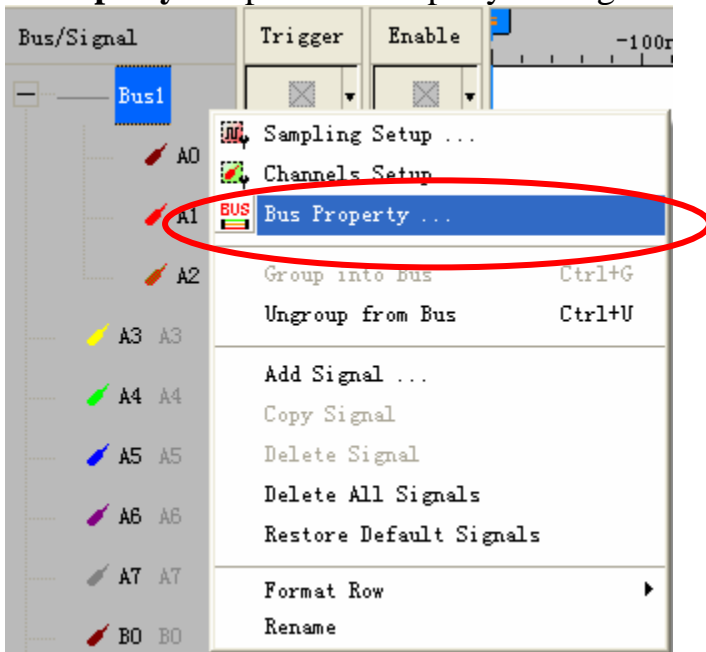
Company profile is on Register dialogue box. If users have question about operating software, please contact us by Telephone or Email.

3 Operating Instructions

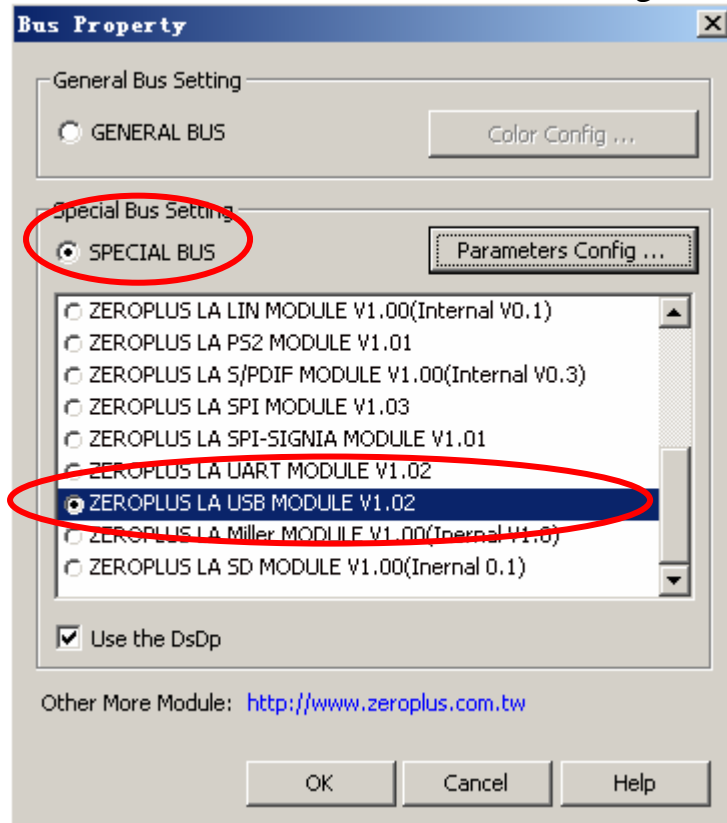
STEP 1. At First, group the unanalyzed channels into bus1



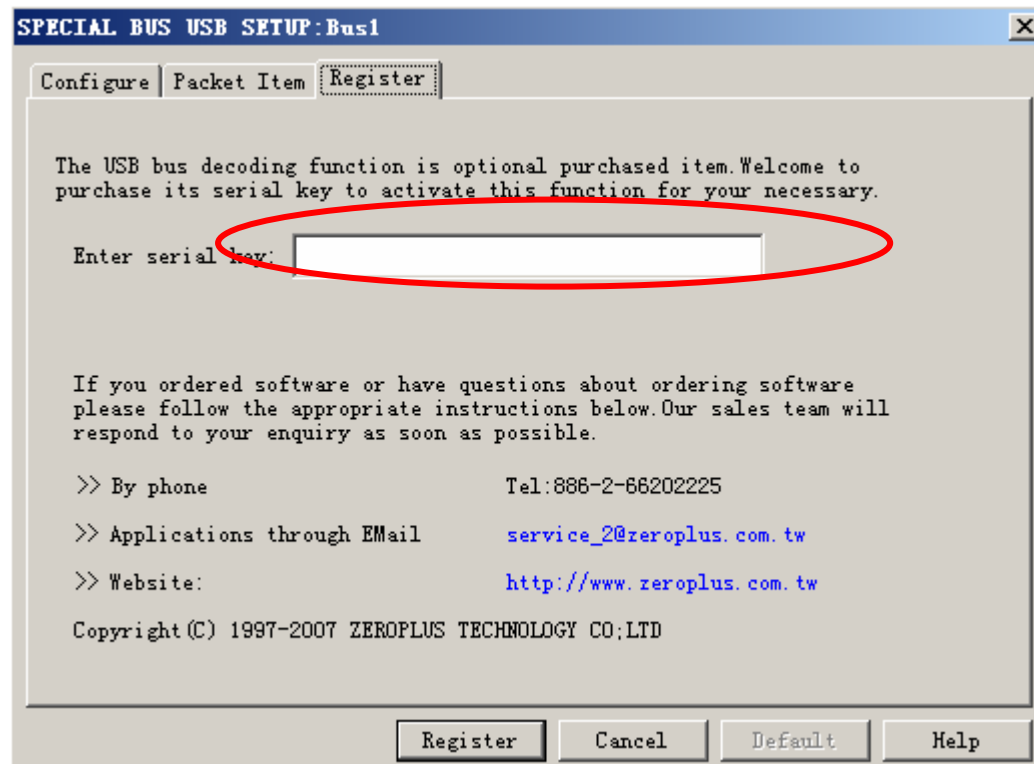
STEP 2. Selected Bus 1, then press **Right Key** on mouse to list menu. Next, click **Bus Property** to open Bus Property Dialog Box



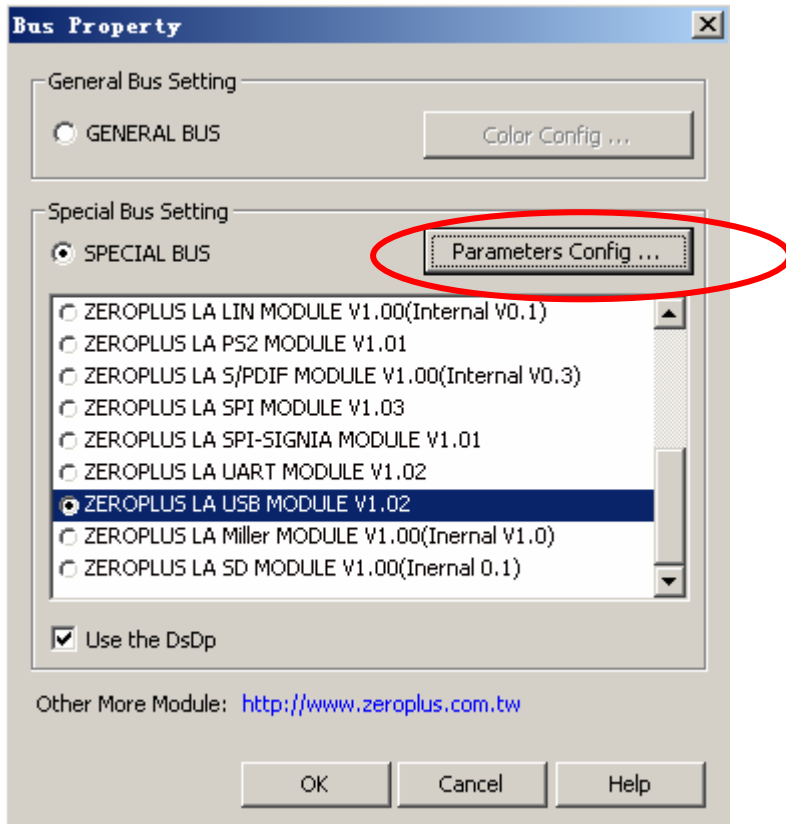
STEP 3. For Special Bus Setting, select Special Bus, and then choose ZEROPLUS LA USB V1.02, next click Parameter Configuration to finish Special Bus Setting.



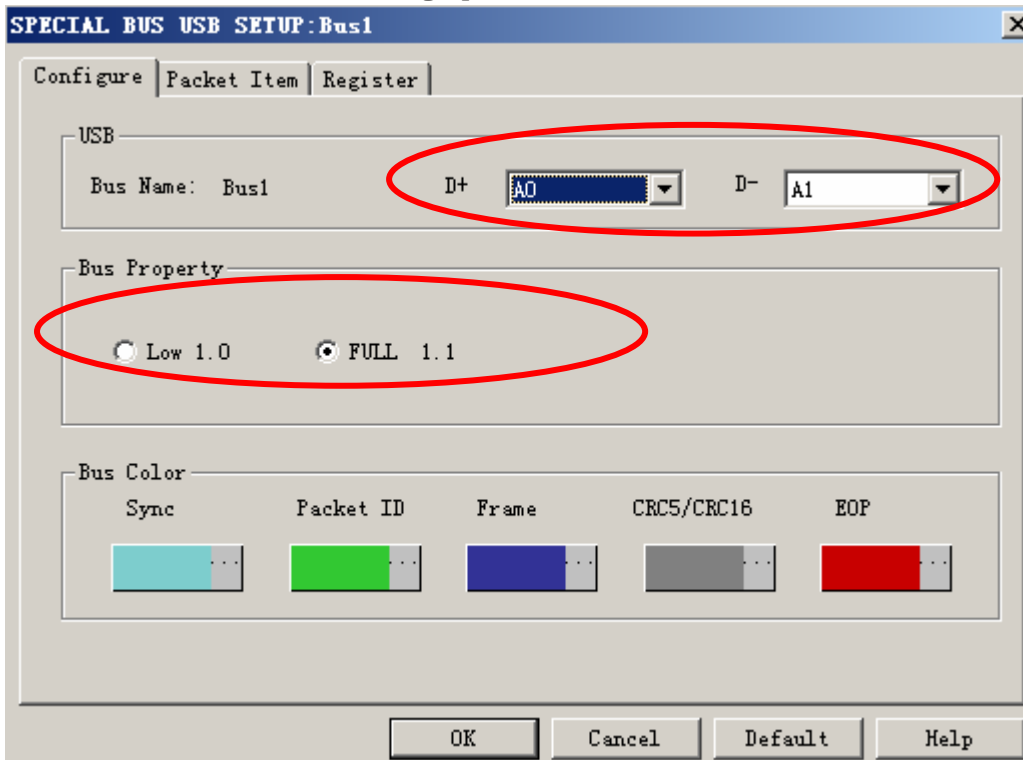
STEP 4. Press Register tab to type the serial key number of logic analyzer. Then, press “Register”



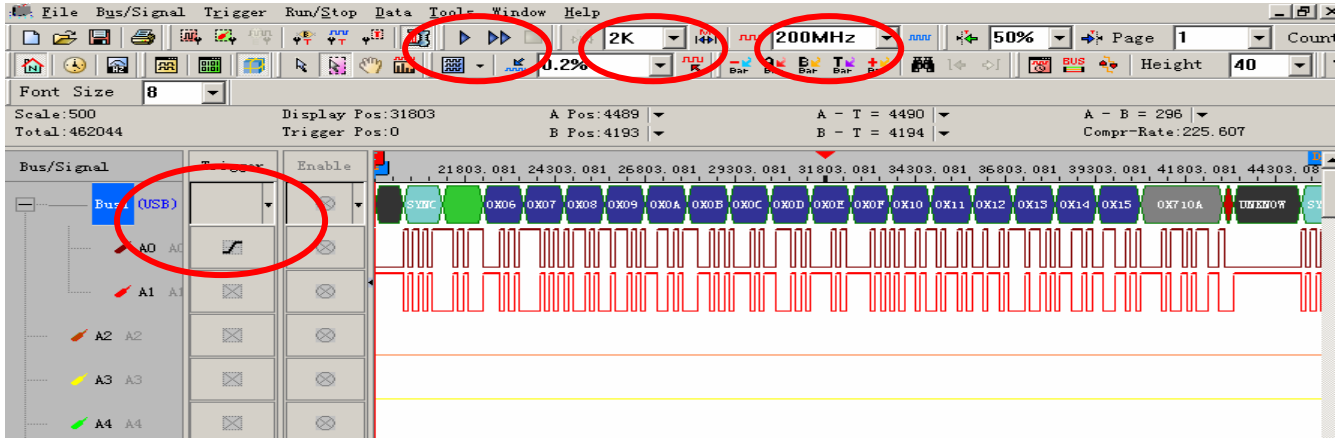
STEP 5. After finish Register, it turns to set Parameters Configuration, select ZEROPLUS LA USB V1.02, and than press Parameters Configuration key to set Special Bus Parameters



STEP 6. USB Module Using Specification



STEP 7. Following picture shows that the completion of bus decoding. The conditions are set as that Memory depth is 2K and Sampling Frequency is 200MHz,using the Compression mode can capture more data.



Following picture shows the package list and waveforms displaying.

