



**孕龍科技股份有限公司**  
**ZEROPLUS TECHNOLOGY CO.,LTD**

# Instrument Business Department

## LCD1602 Specification

Edition : V1.0

## Content

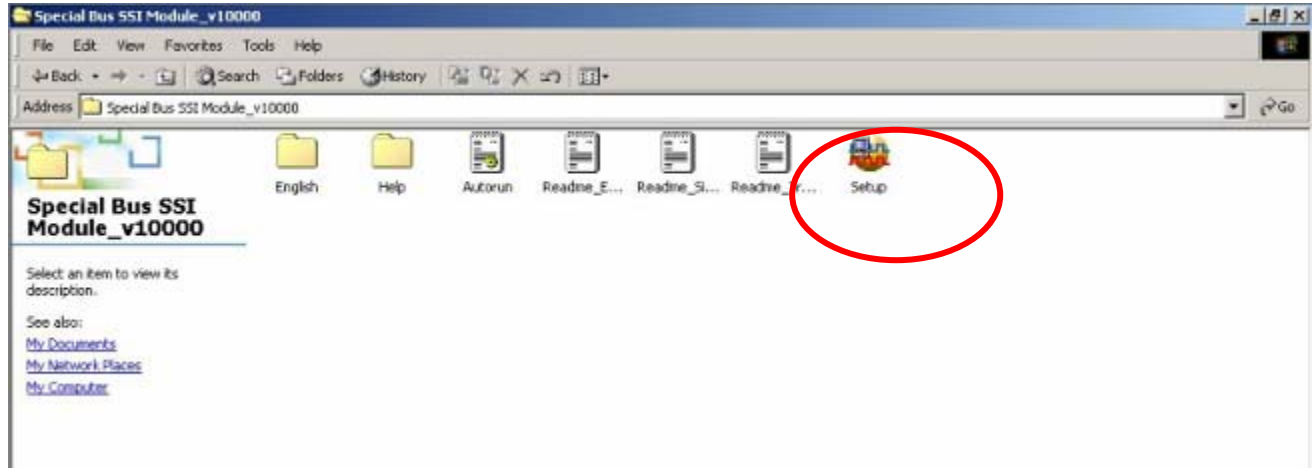
1	Software Installation .....	3
2	User Interface .....	7
3	Operating Instructions .....	9

## 1 Software Installation

Please as the following steps to install the software.

※ Remark: The Installed steps for all Buses are the same, you can complete installation by following procedures. Below images are examples to install SSI.

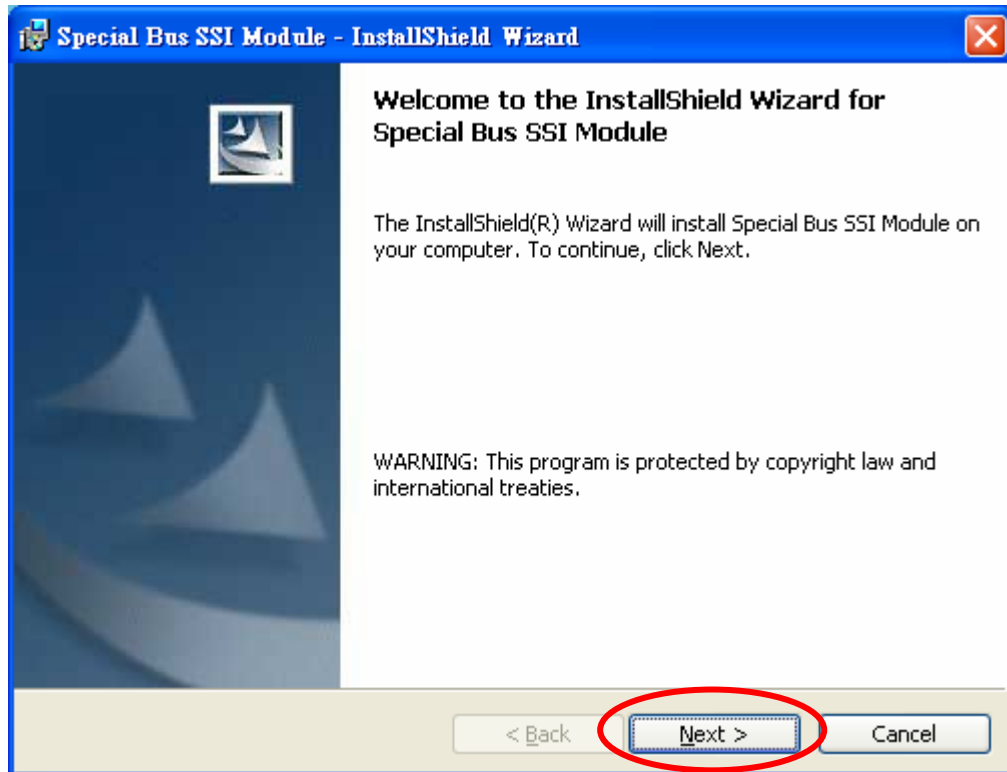
### STEP 1. SSI BUS Module



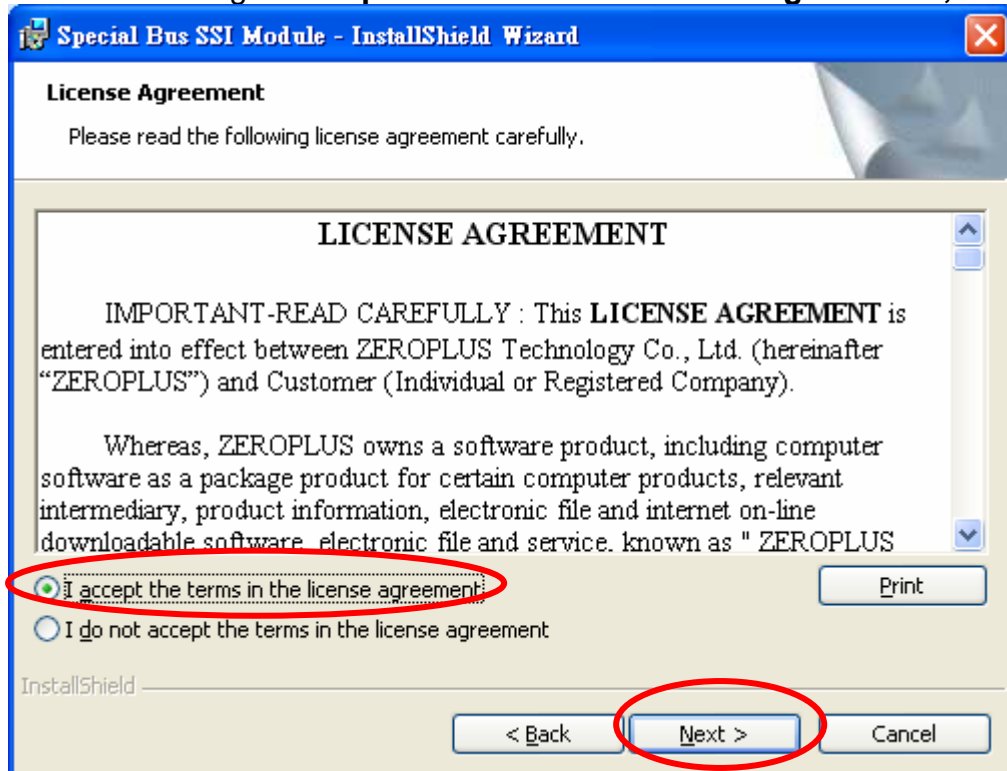
### STEP 2. Click "Install".



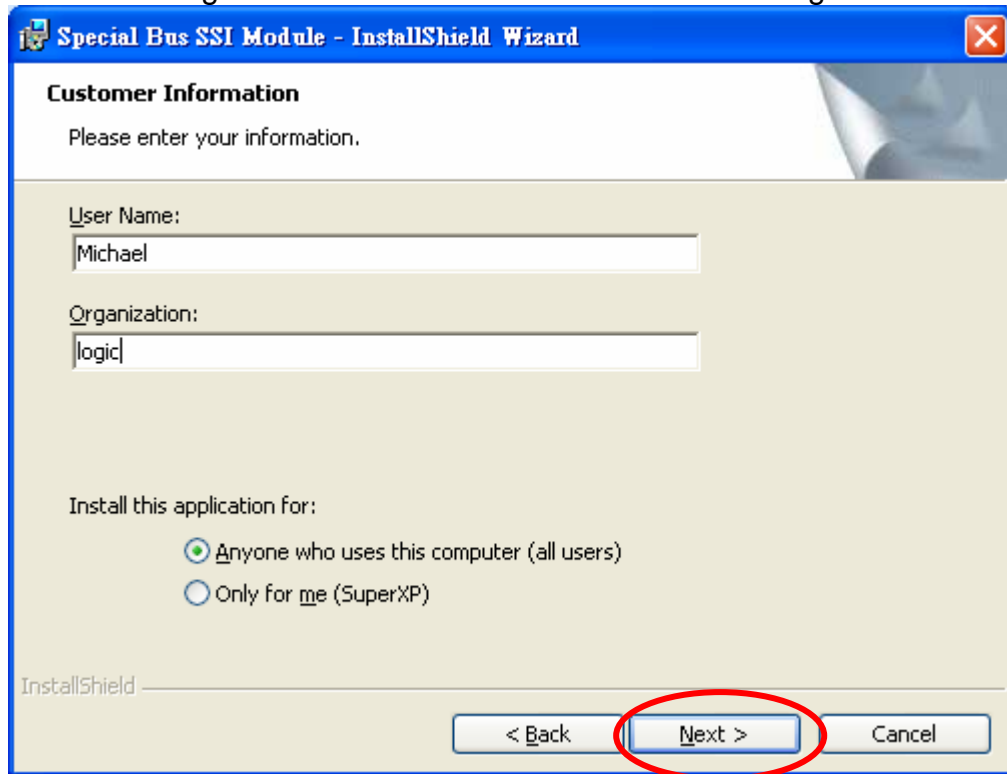
**STEP 3. Click "Next".**



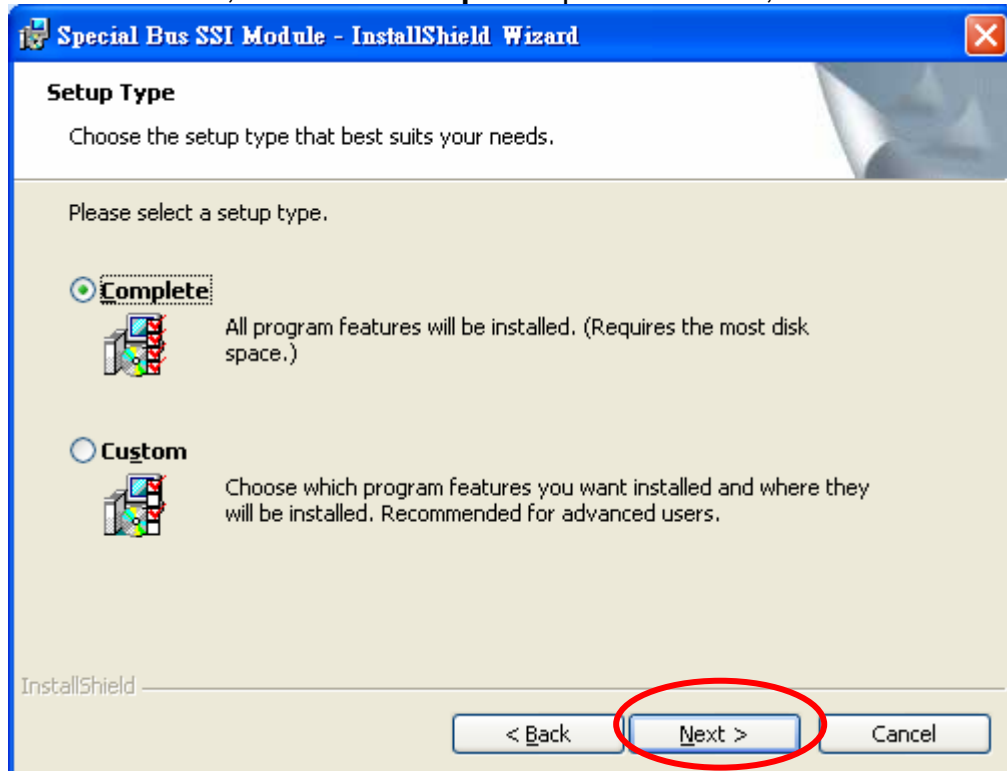
**STEP 4. Clicking "I accept the terms in the license agreement", and pressing Next.**



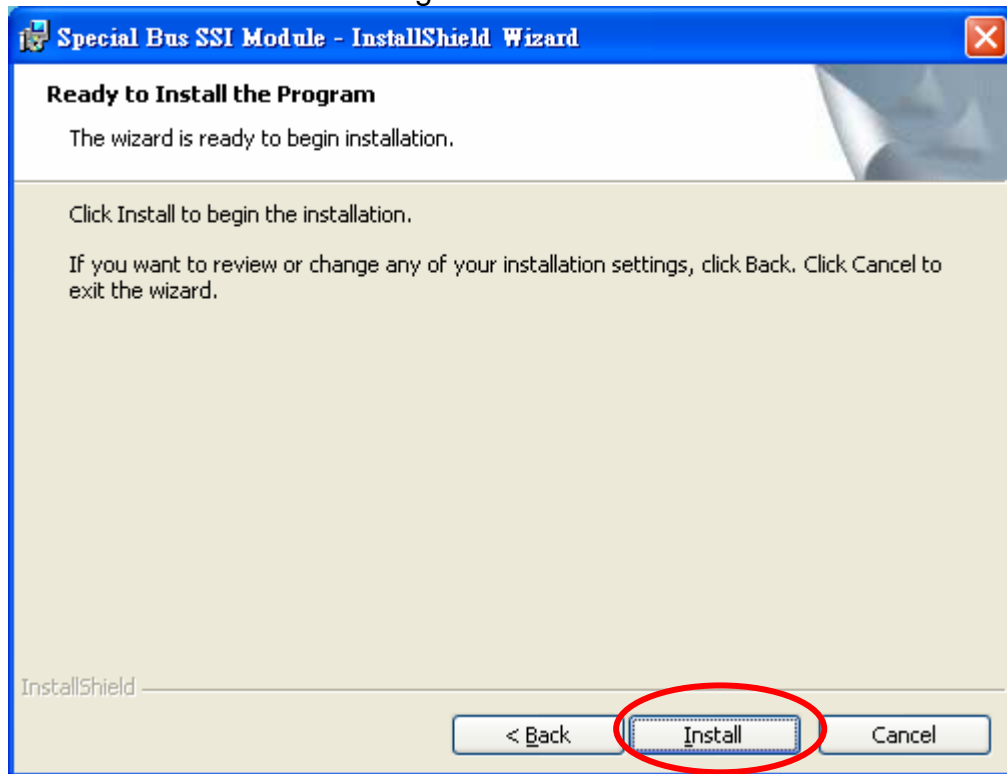
**STEP 5.** Filling the relative information in the below dialog box and clicking “Next”.



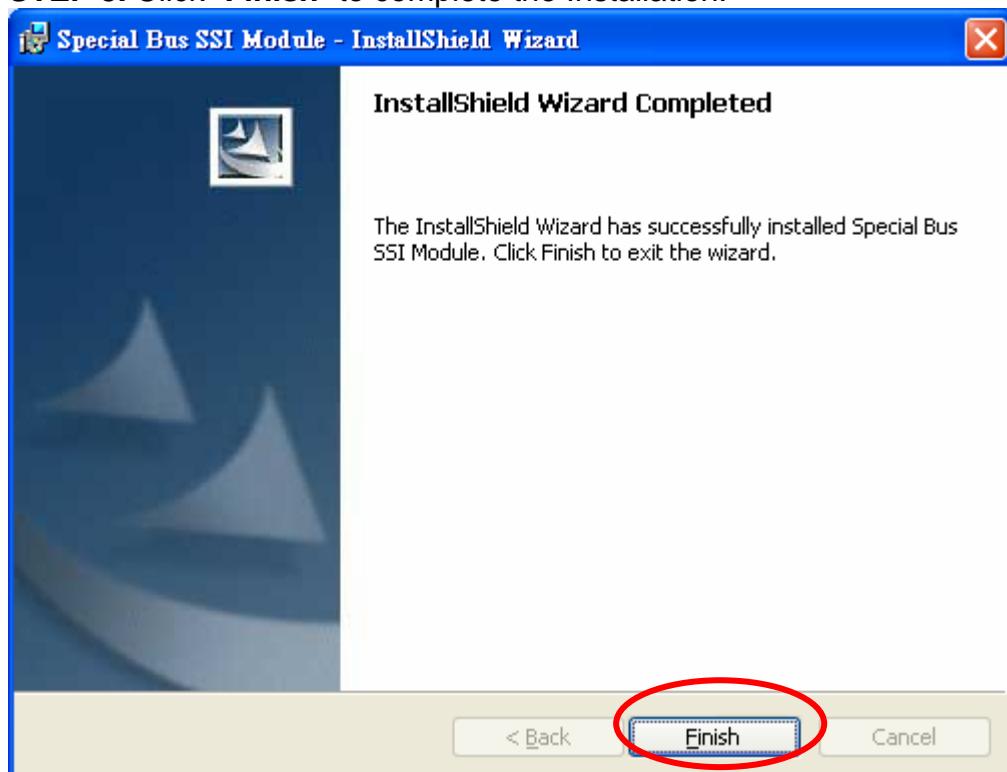
**STEP 6.** At first, select the **Complete** option and then, click “Next”.



**STEP 7.** Click “Install” to begin the installation.



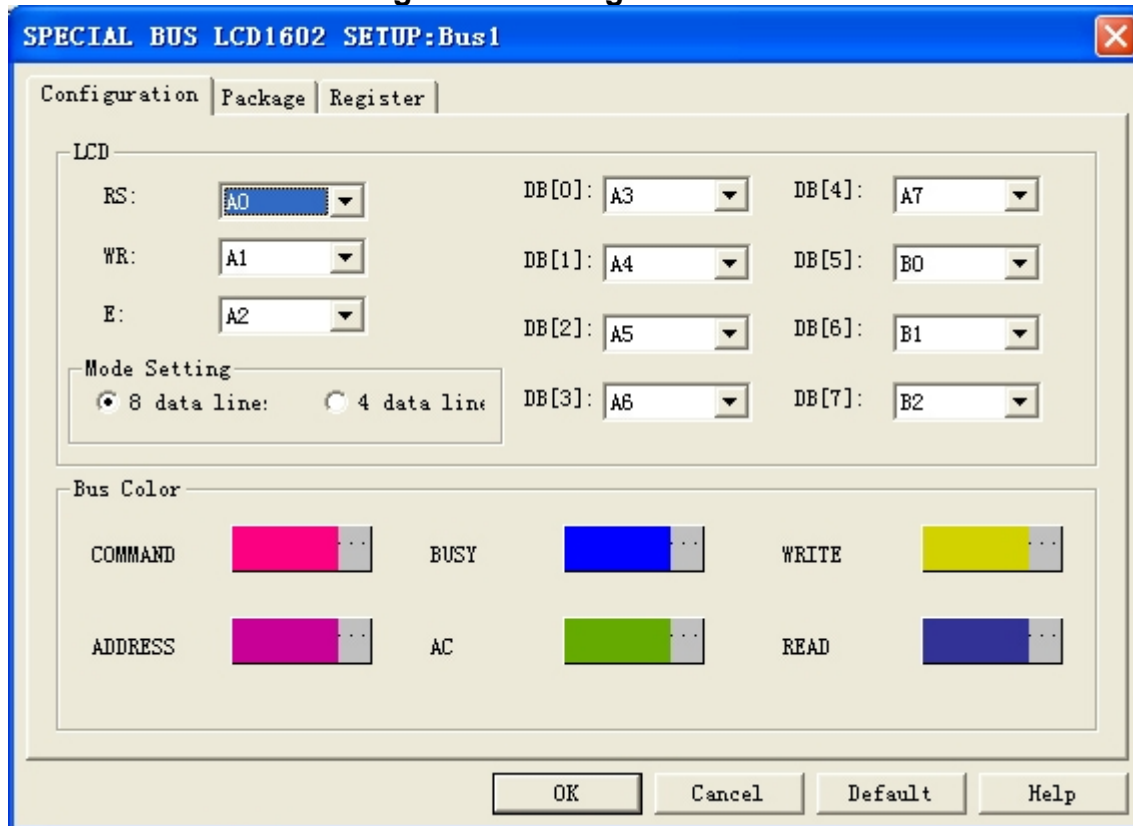
**STEP 8.** Click “Finish” to complete the Installation.



## 2 User Interface

Please refer to the below image to select options of setting LCD 1602 MODULE.

### LCD 1602 MODULE Configuration dialog box



#### LCD 1602 MODULE channel selection:

- RS: User can click the arrow next to RS and choose the appropriate channel, the default is A0.
- WR: User can click the arrow next to WR and choose the appropriate channel, the default is A1.
- E: User can click the arrow next to E and choose the appropriate channel, the default is A2.
- DB[0]: User can click the arrow next to DB[0] and choose the appropriate channel, the default is A3.
- DB[1]: User can click the arrow next to DB[1] and choose the appropriate channel, the default is A4.
- DB[2]: User can click the arrow next to DB[2] and choose the appropriate channel, the default is A5.
- DB[3]: User can click the arrow next to DB[3] and choose the appropriate channel, the default is A6.
- DB[4]: User can click the arrow next to DB[4] and choose the appropriate channel, the default is A7.
- DB[5]: User can click the arrow next to DB[5] and choose the appropriate channel, the default is B0.
- DB[6]: User can click the arrow next to DB[6] and choose the appropriate channel, the default is B1.
- DB[7]: User can click the arrow next to DB[7] and choose the appropriate channel, the default is B2.

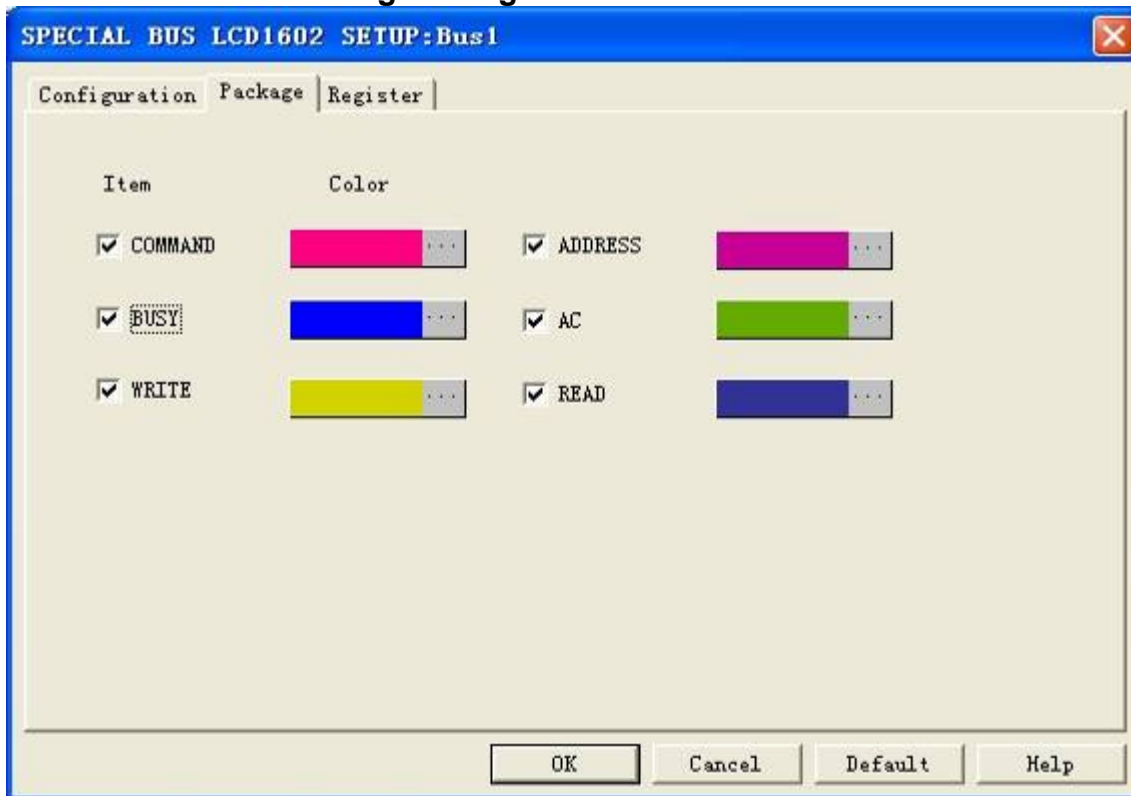
#### Mode Setting:

- 8 data lines displaying as a group for a Bus.
- 4 data lines displaying as a group for a Bus.
- The default is 8 data lines.

#### Bus Color:

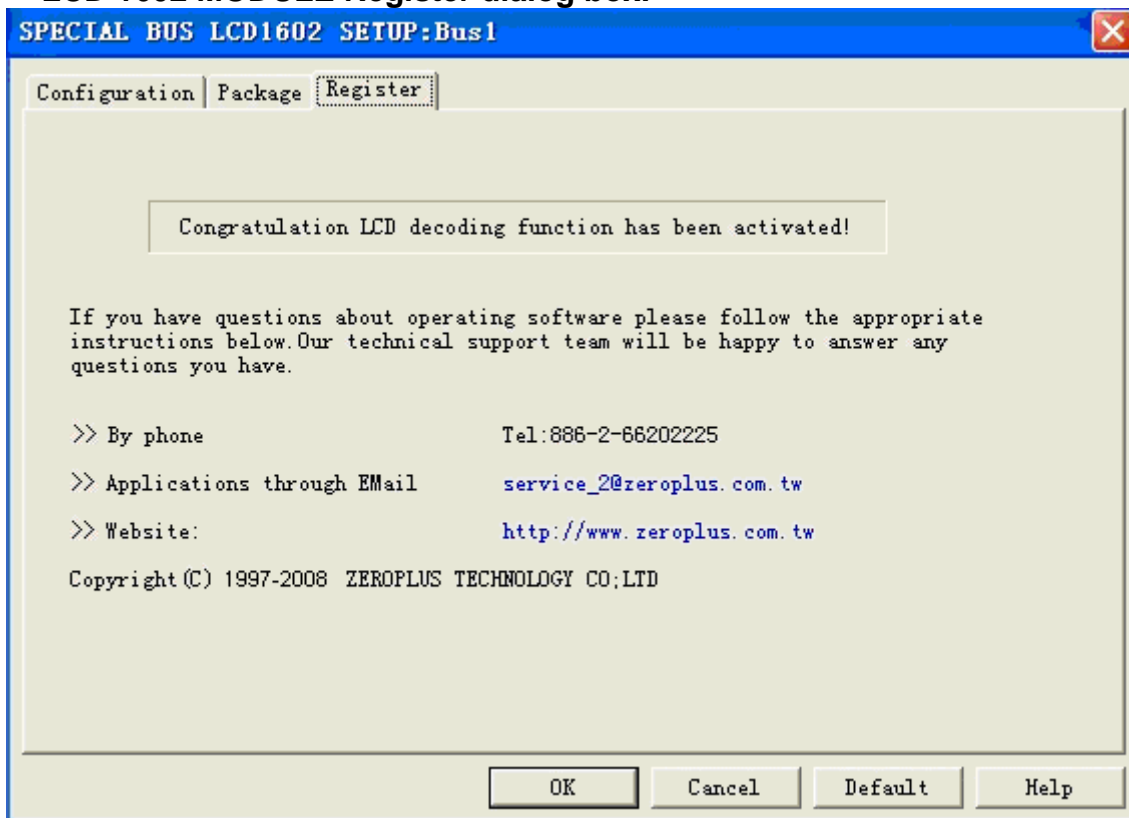
User can vary the Bus color. Red color indicates that the error occurred.

### LCD 1602 MODULE Package dialog box



In the package dialog, user can vary the color of items

### LCD 1602 MODULE Register dialog box.

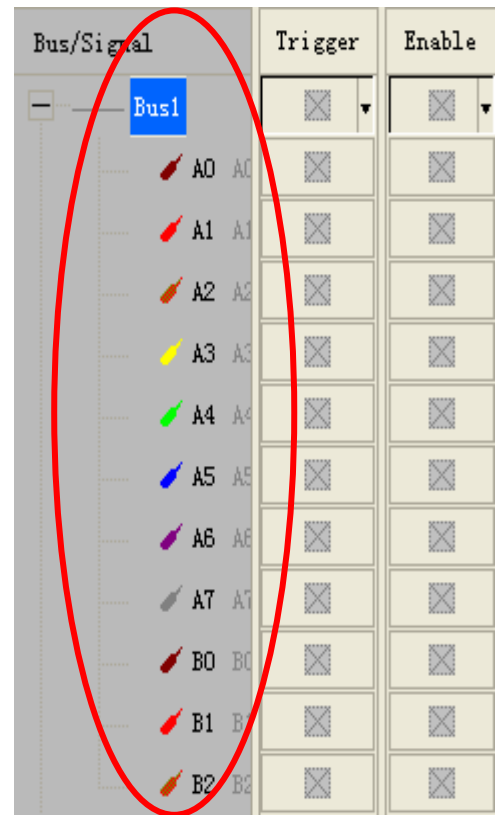
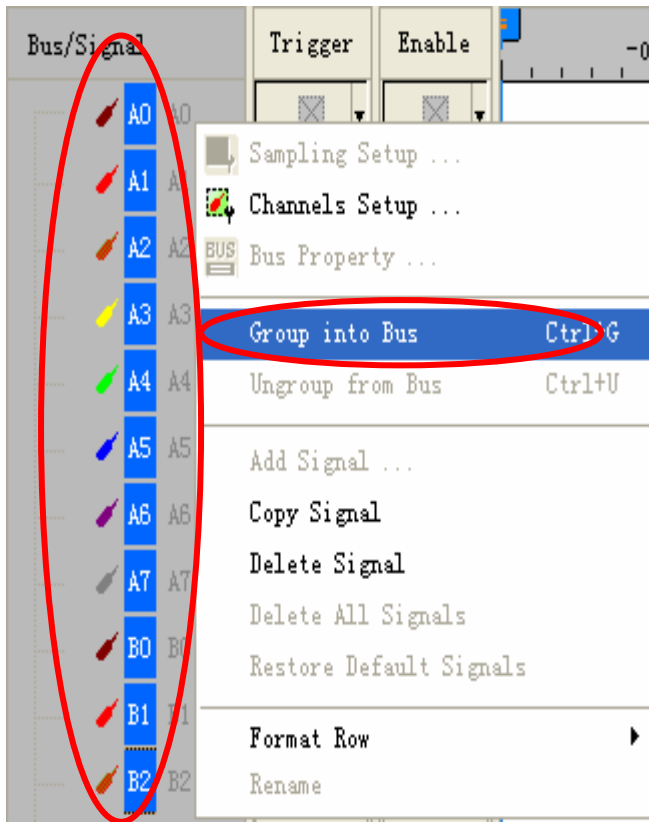


There is ZeroPlus company information written. If users have question about software Operations, user can contact ZeroPlus by Telephone or Email.

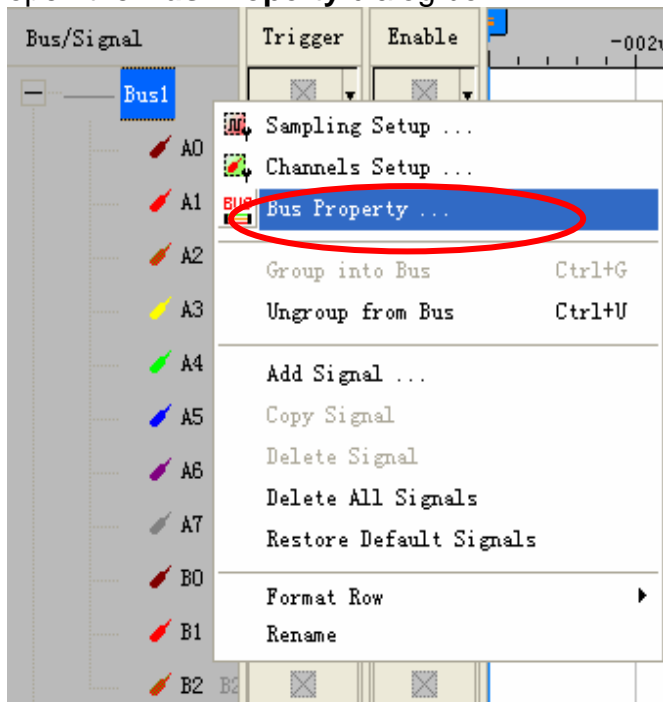


### 3 Operating Instructions

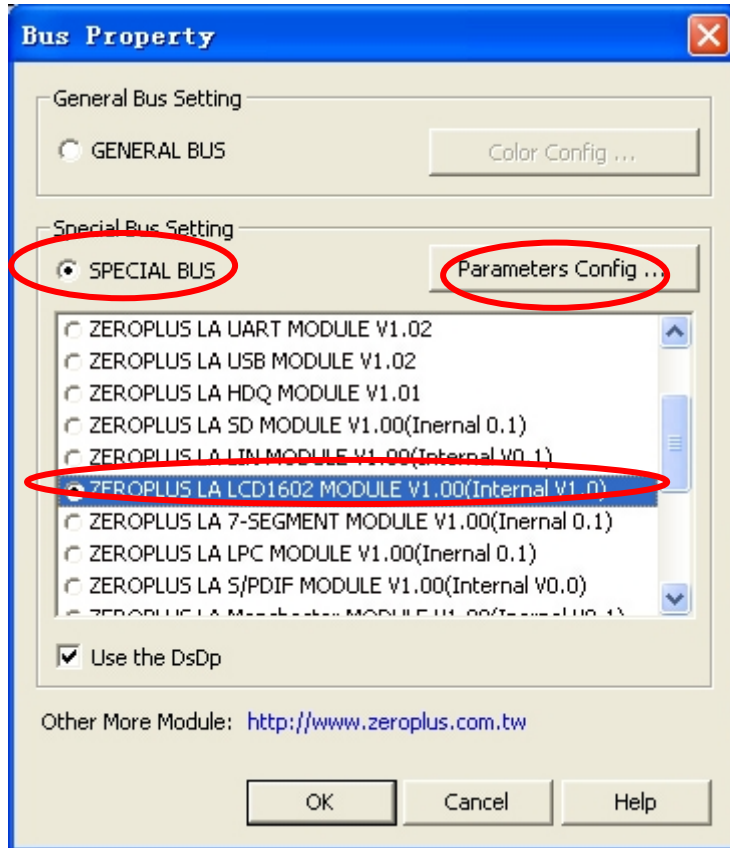
**STEP 1.** At first, Group the unanalyzed channels into bus 1 by pressing the **Right Key** on mouse.



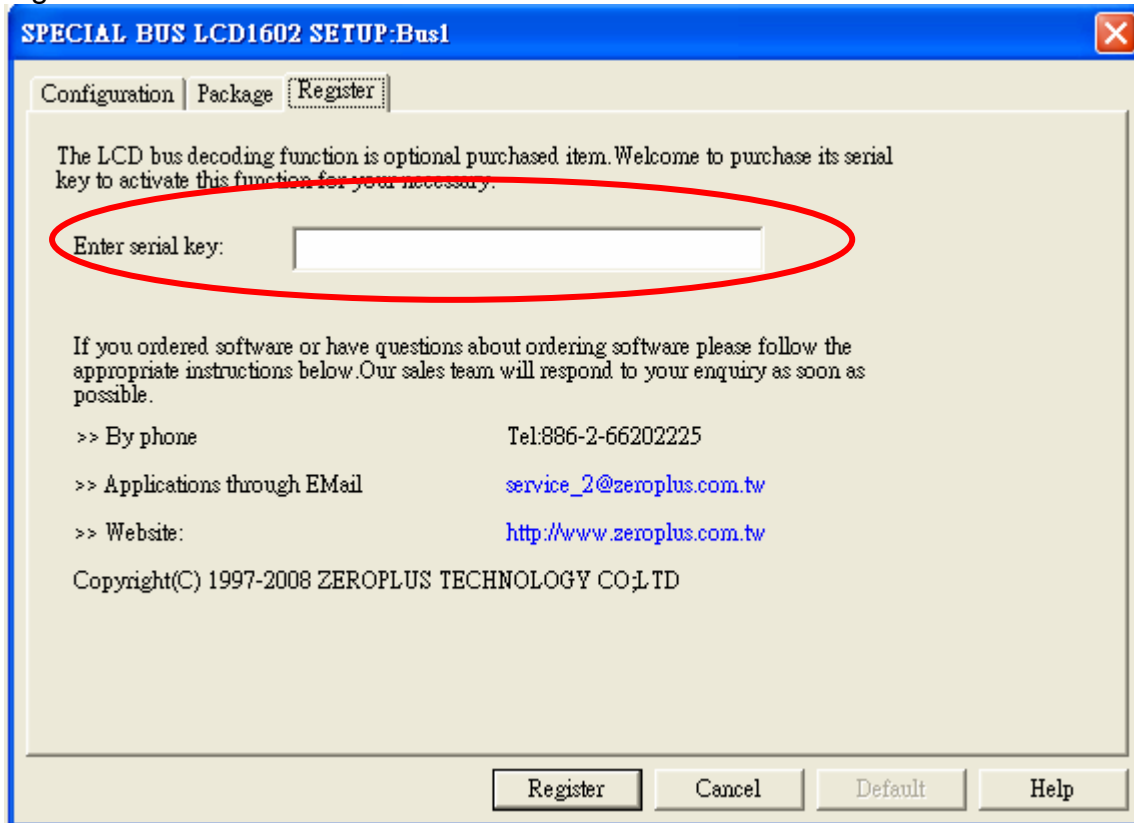
**STEP 2.** Select **Bus1**, to press **Right** key on the mouse, then to click **Bus Property** to open the **Bus Property** dialog box.



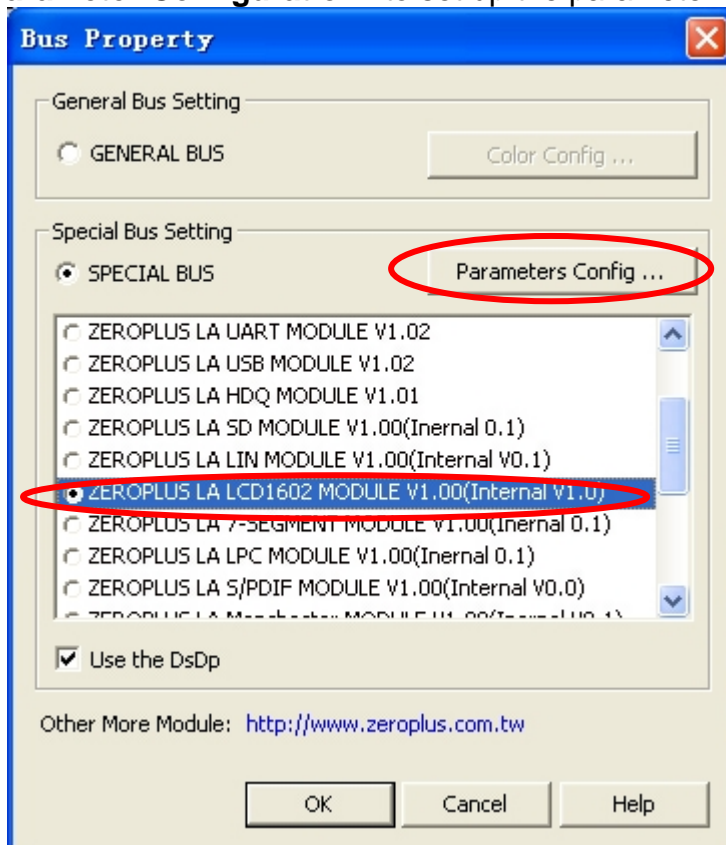
**STEP 3.** For Special Bus Parameter Configuration, select Special Bus, then choose **ZEROPLUS LA LCD1602 MODULE V1.00 (Internal V0.1)**. Next click “Parameter Configuration” to open the configure dialogue.



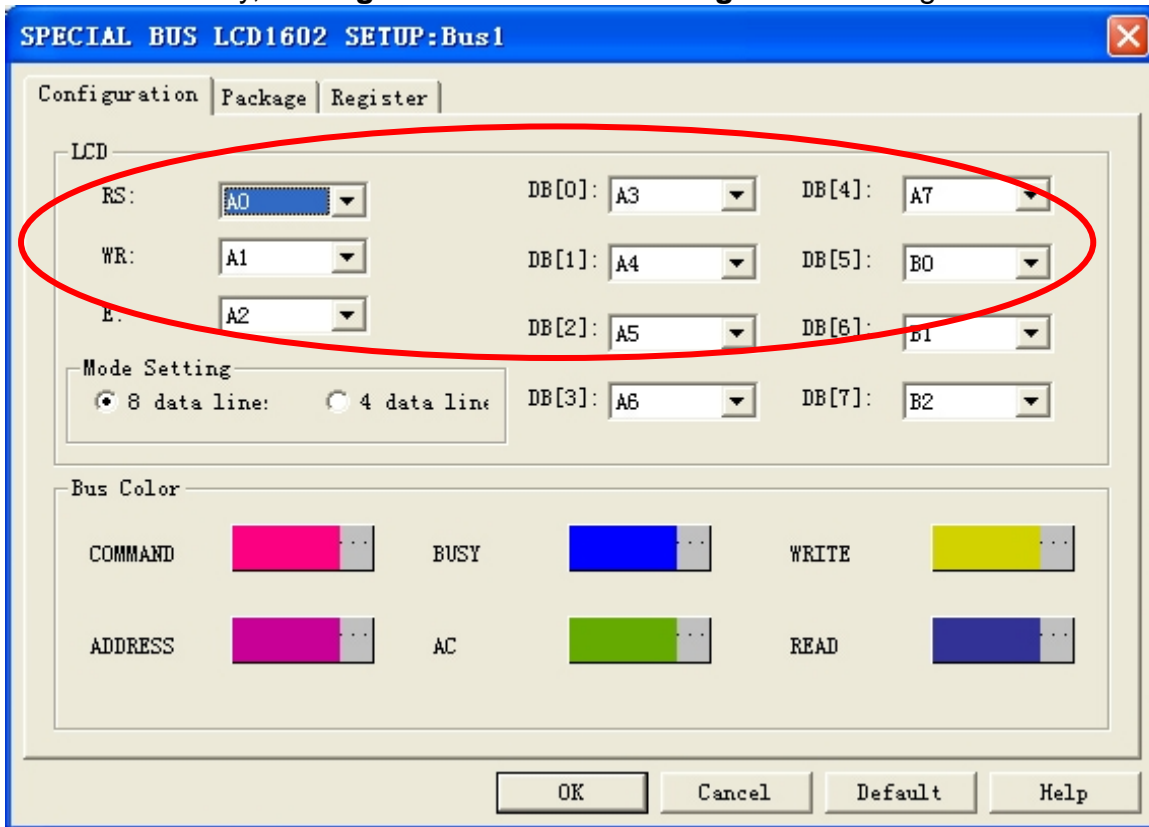
**STEP 4.** Press Register tab to type the serial key number of LA LCD 1602 Module. Then, press “Register”



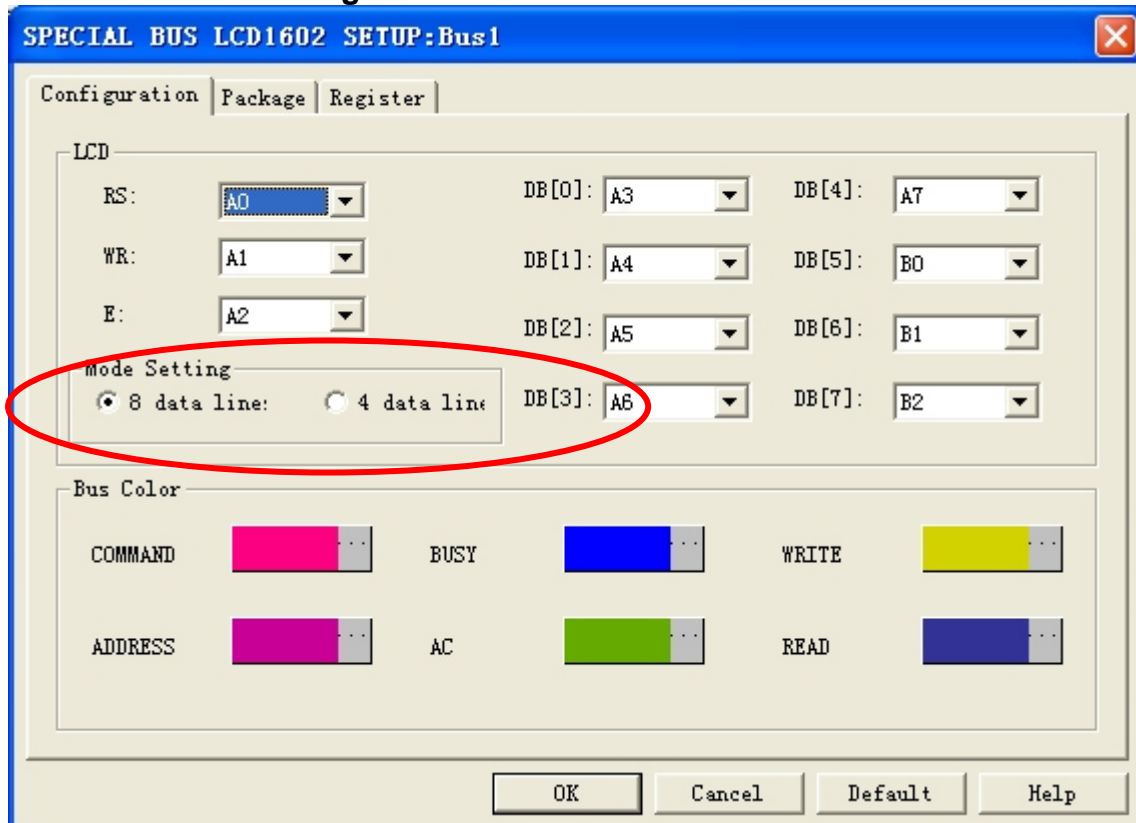
**STEP 5.** After pressing “OK” on Register Dialog, it turns to **Bus Property** dialogue box. Click “**Parameter Configuration**” to set up the parameter of special bus.



**STEP 6. Firstly, setting LCD Bus1 in the Configuration dialog box.**

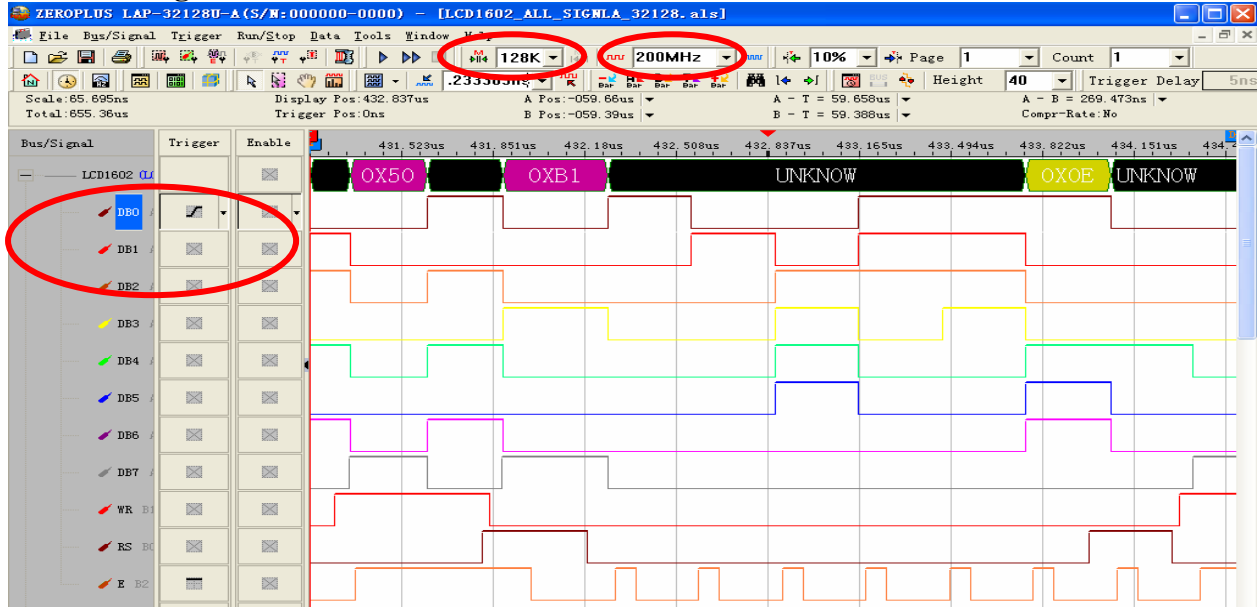


**STEP 7. Mode Setting**



**STEP 8.** Following picture shows that the completion of the Bus decoding and packet list. The conditions are set as that falling edge, Memory depth is 128K, Sampling frequency is 200MHz.

**Bus decoding**



**Packet list**

