



**孕龍科技股份有限公司**  
**ZEROPLUS TECHNOLOGY CO.,LTD**

# Instrument Business Department

## JTAG2.0 Specification

Version: V1.0

## Content

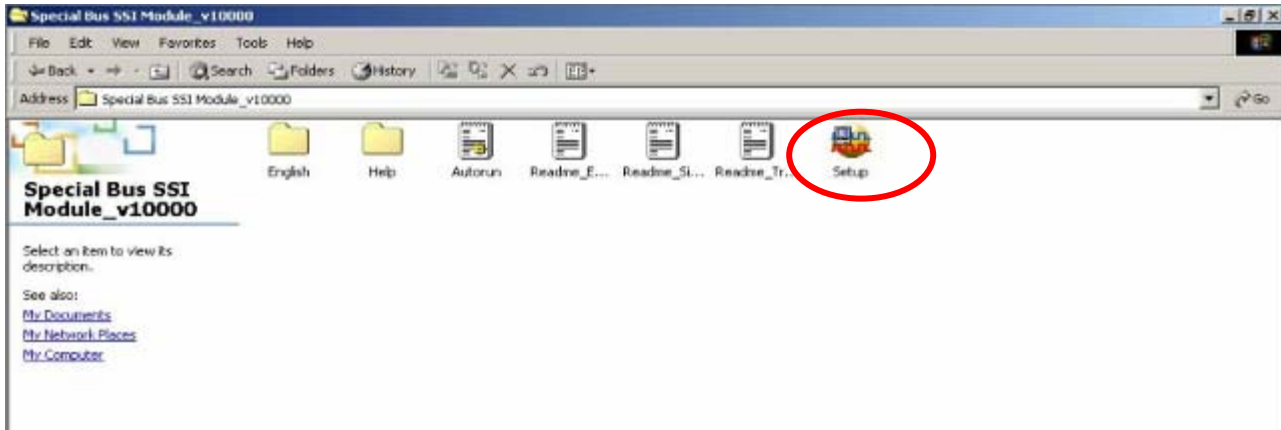
1	Software Installation.....	3
2	User Interface .....	7
3	Operating Instructions .....	9

## 1 Software Installation

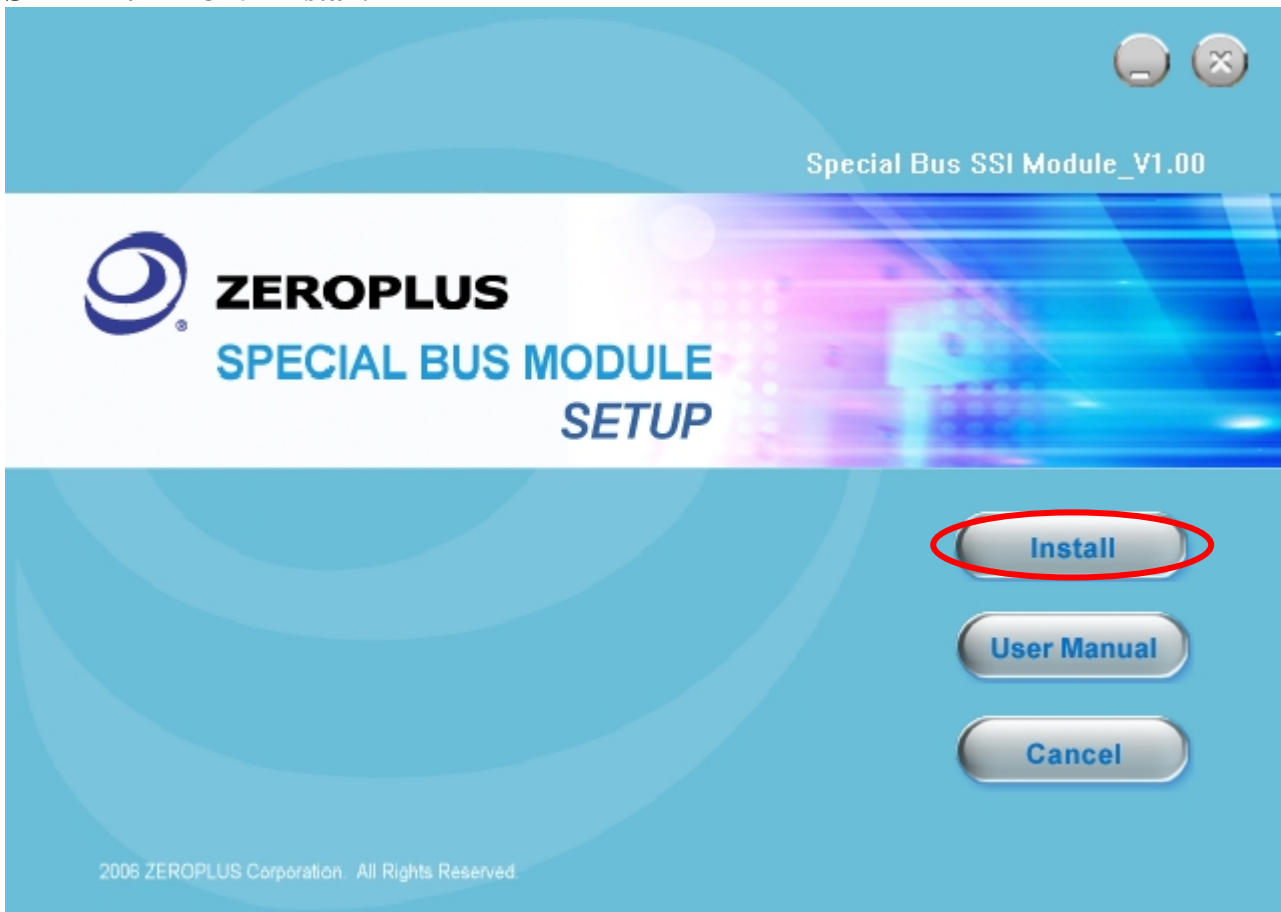
Please follow below steps to install the software.

※ Remark: The installation steps for all buses are the same; you can complete installation by following procedures. The below is an example to install SSI bus.

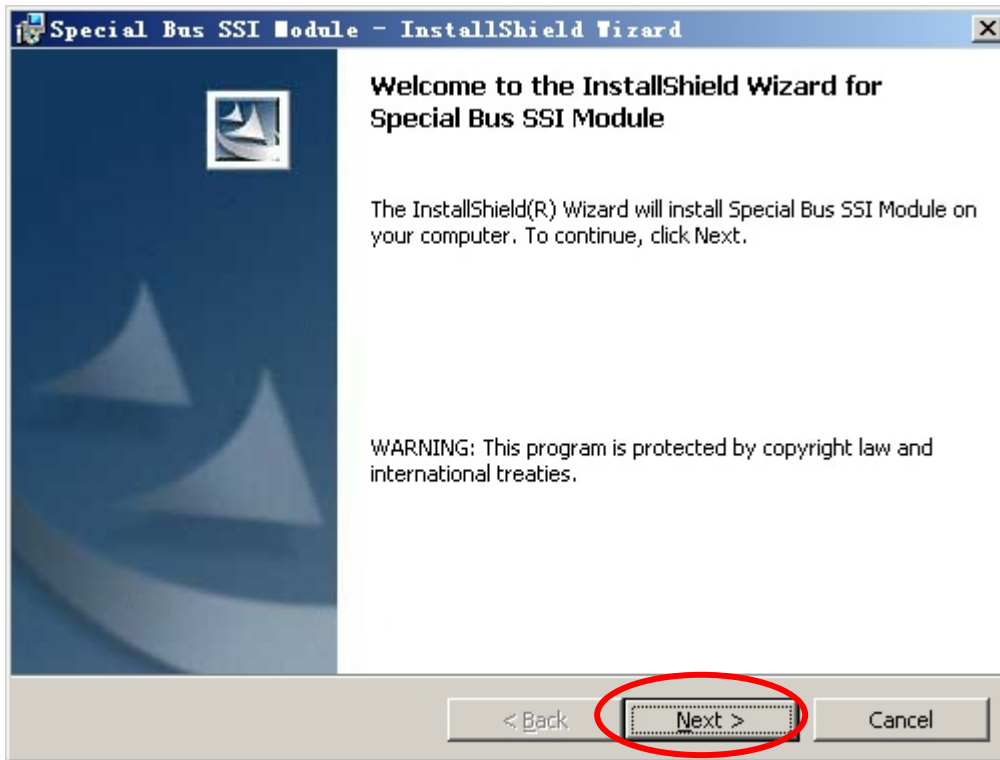
### STEP 1. Install Bus Module .



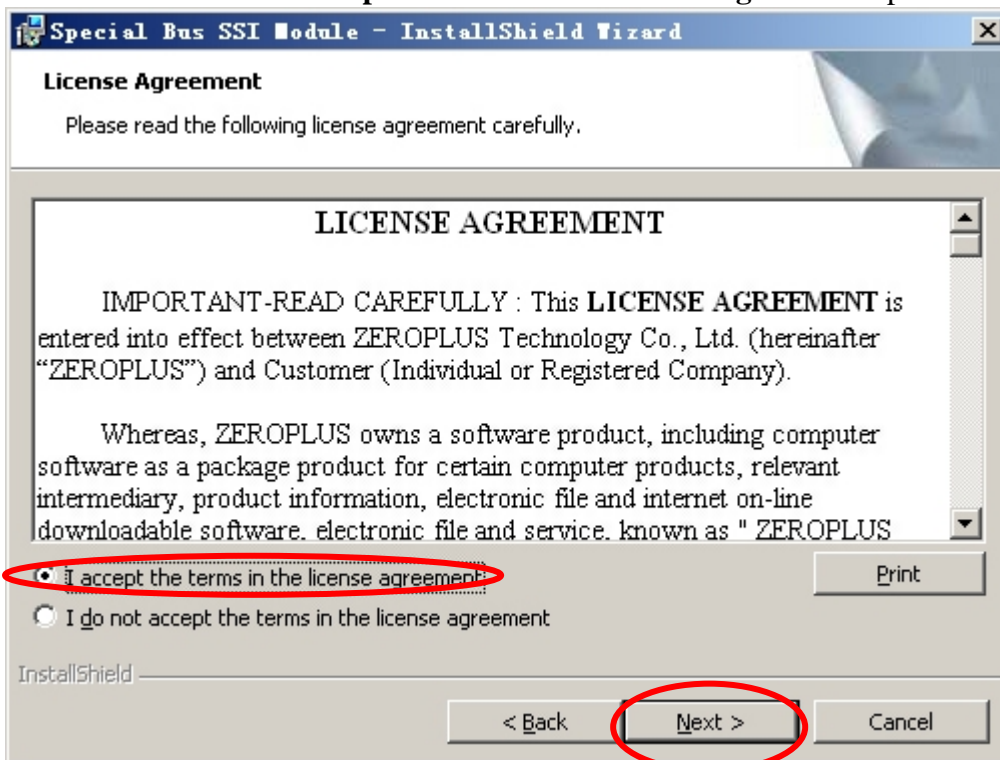
### STEP 2. Click Install.



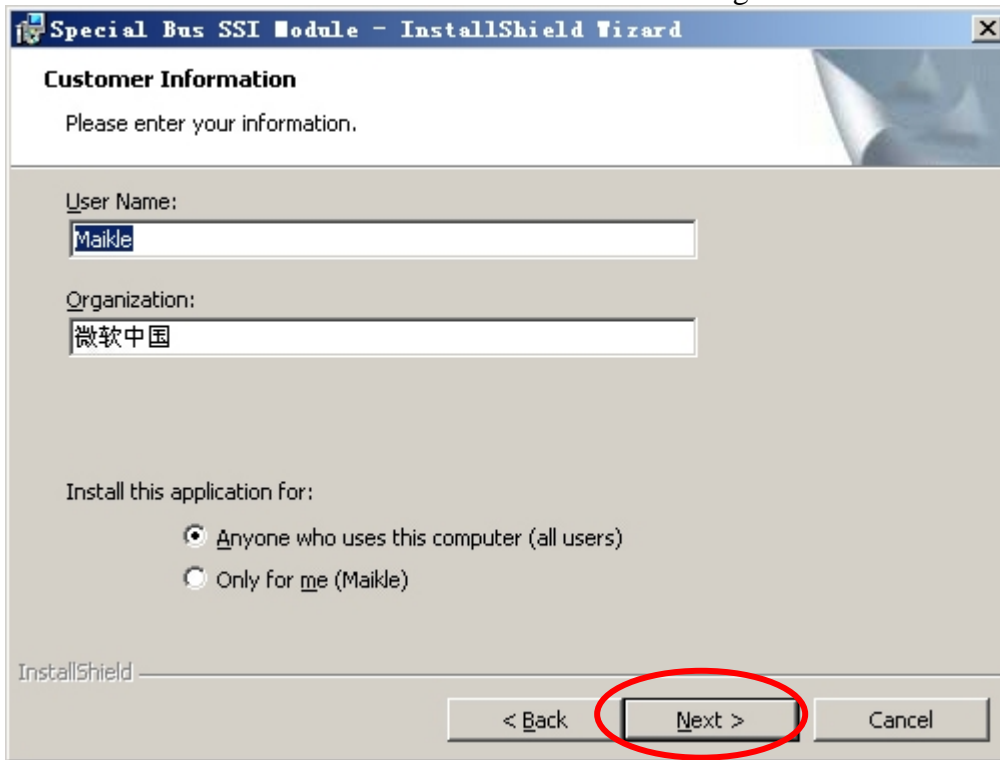
**STEP 3.** Click Next.



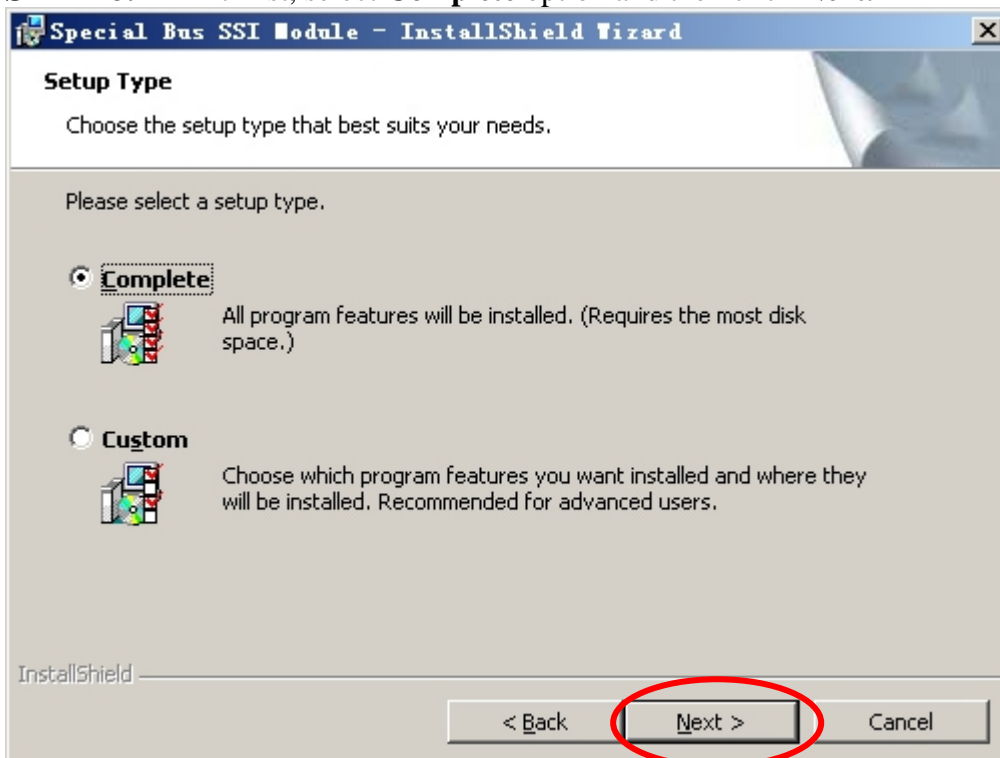
**STEP 4.** Select **I accept the terms in the license agreement** option, and then press Next.



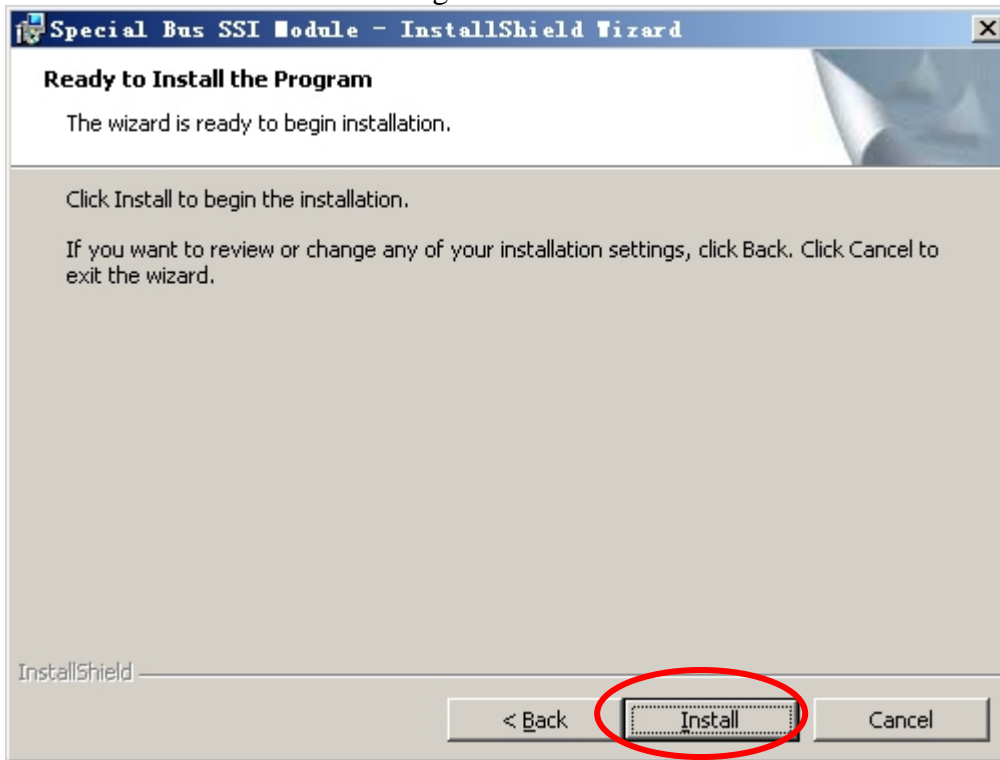
**STEP 5.** Fill in user information in the below dialogue box and click **Next**.



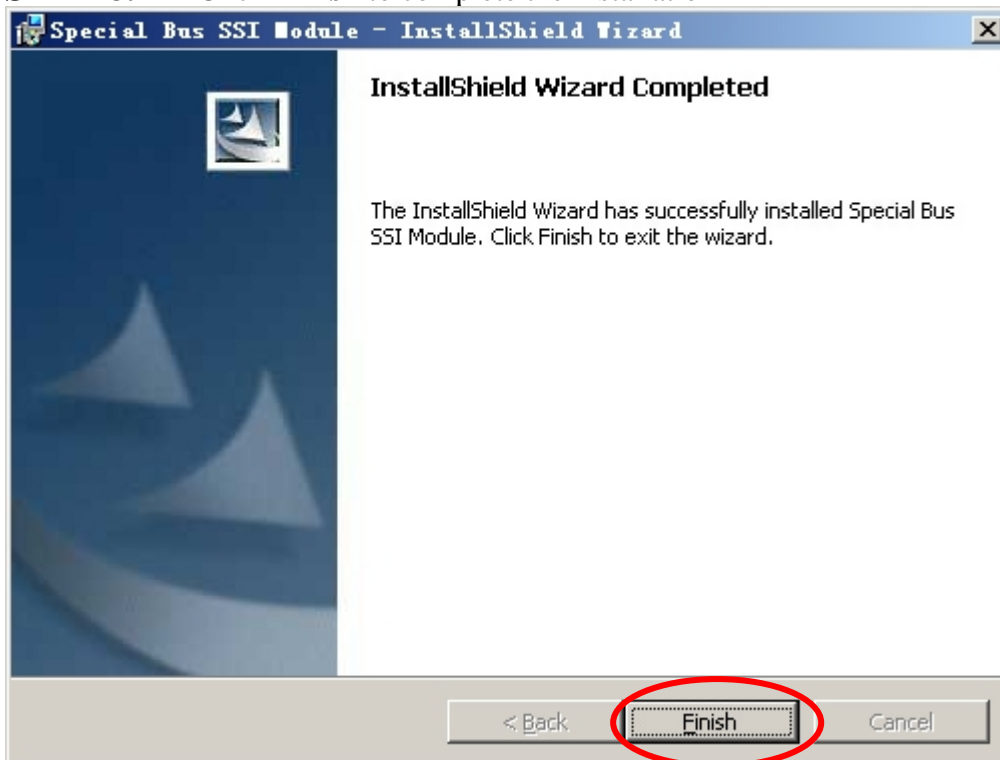
**STEP 6.** At first, select **Complete** option and then click **Next**.



**STEP 7.** Click **Install** to begin the installation.



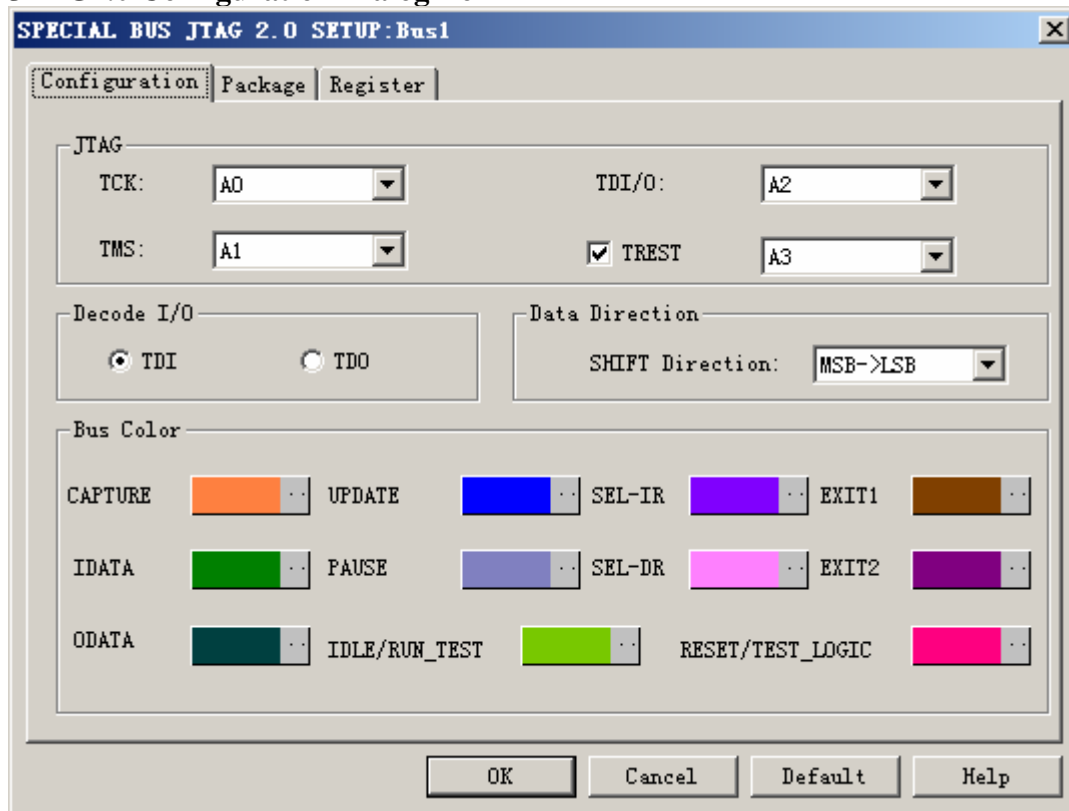
**STEP 8.** Click **Finish** to complete the installation



## 2 User Interface

In the configuration, please refer to the below image to select options of setting JTAG2.0 module.

### JTAG2.0 Configuration Dialog Box



#### JTAG2.0:

When the TREST key isn't activated, JTAG2.0 has three lines: TCK, TDI/O and TMS. Hereinto, all the channels can be selected from their dropdown menus. And TCK is defaulted A0, TDI/O is defaulted A2, TMS is defaulted A1.

#### TREST:

TREST can be selected, and then JTAG2.0 has four lines, but the defaulted TREST isn't activated

#### Decoding I/O:

Decoding I/O has two decoding modes in the above dialog box: TDI, TD0. You can select either as your requirements.

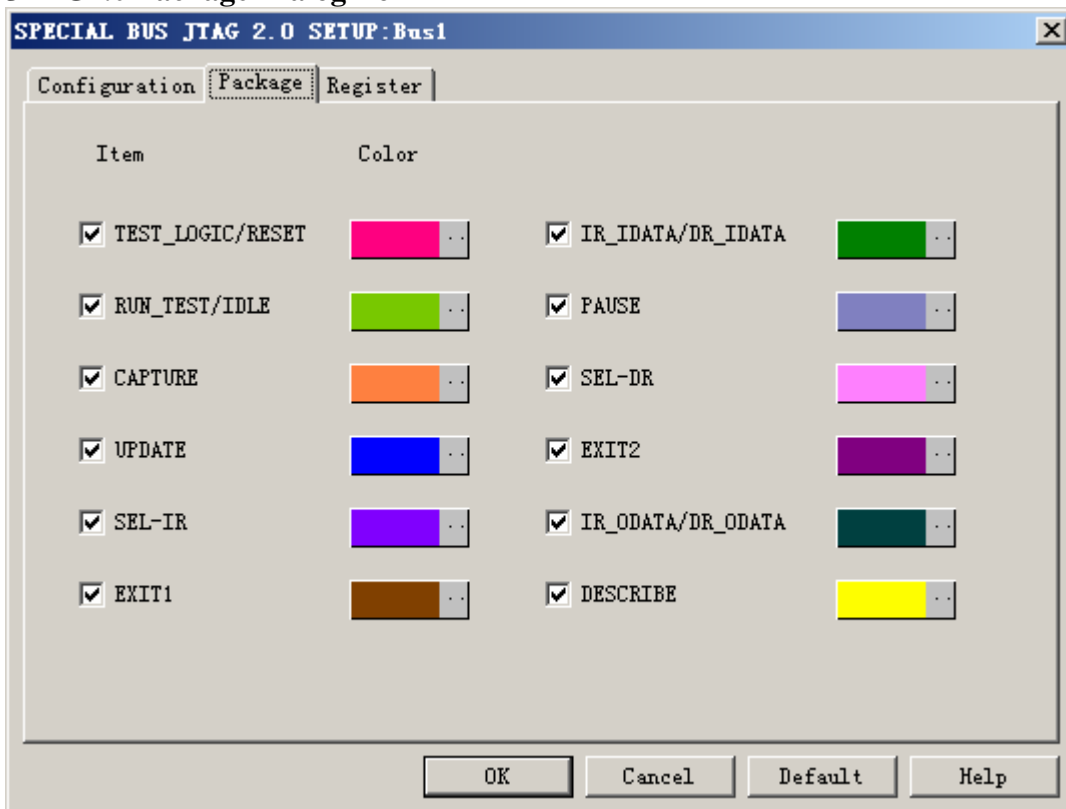
#### Data Direction:

The direction of SHIFT can be selected from its dropdown menu: MSB->LSB, LSB->MSB, and the default direction is MSB->LSB.

#### Bus Color Settings:

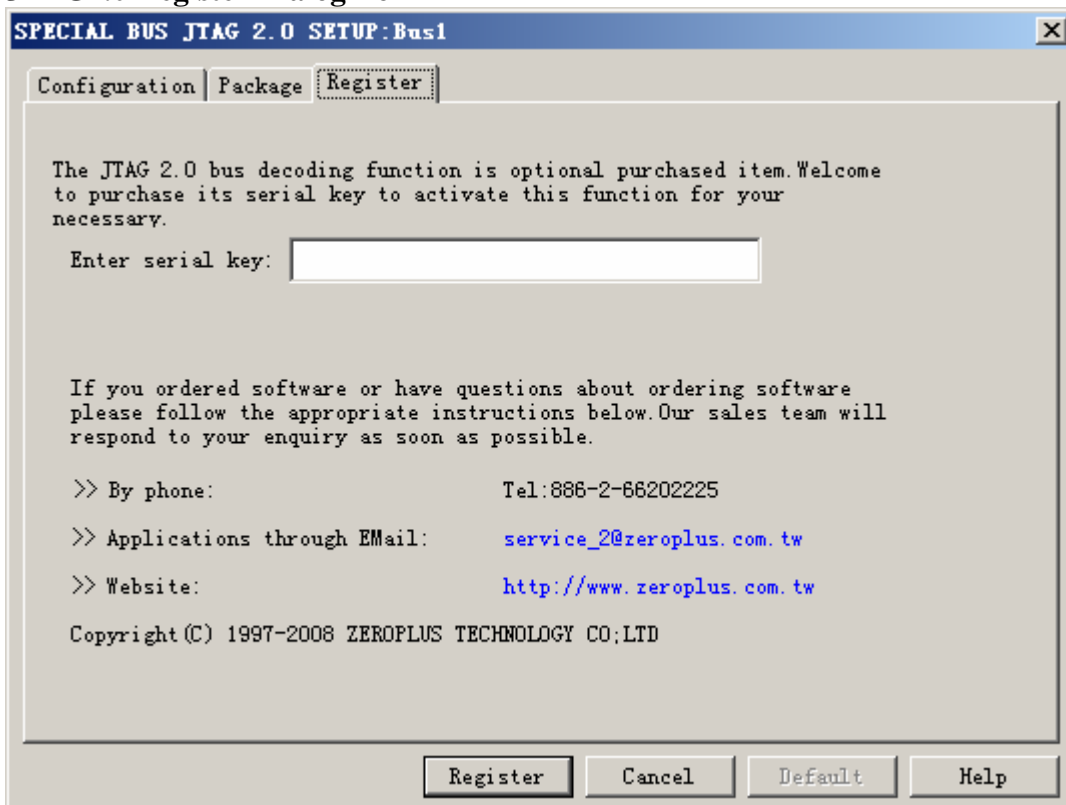
The bus color can be varied by user, such as the colors of CAPTURE, UPDATE, SEL-IR, EXIT1, IDATA, PAUSE, SEL-DR, EXIT2, ODATA, IDLE/RUN\_TEST, RESET/TEST LOGIC

### JTAG2.0 Package Dialog Box



In the Package part, user can select the items and colors configuration as user's requirements.

### JTAG2.0 Register Dialog Box

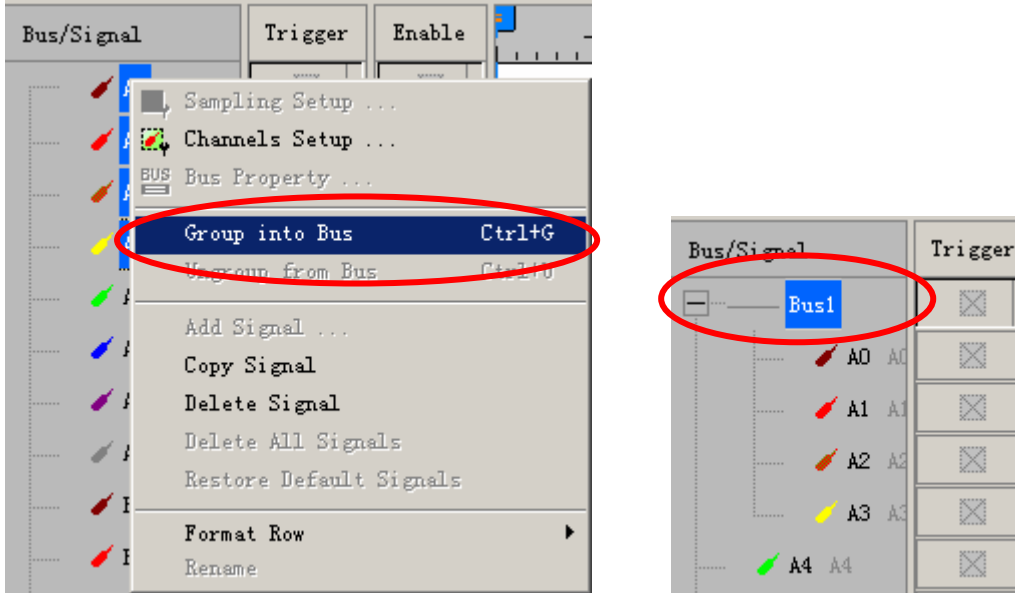


There is ZeroPlus company information. If you have questions about software Operations, you can contact ZeroPlus by Telephone or Email.

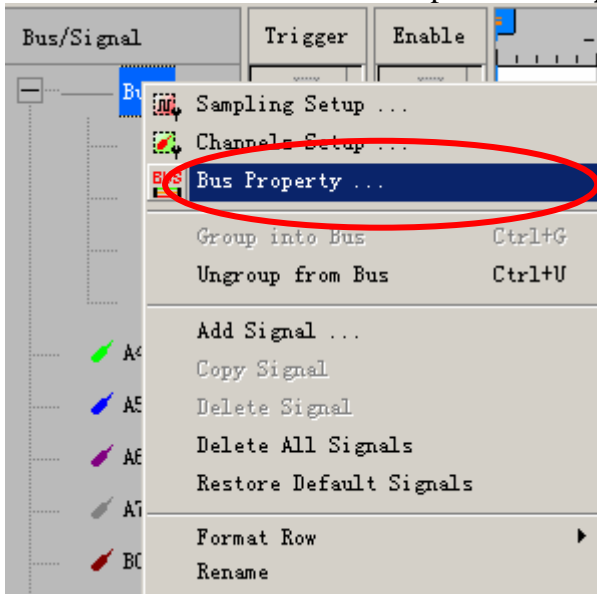


### 3 Operating Instructions

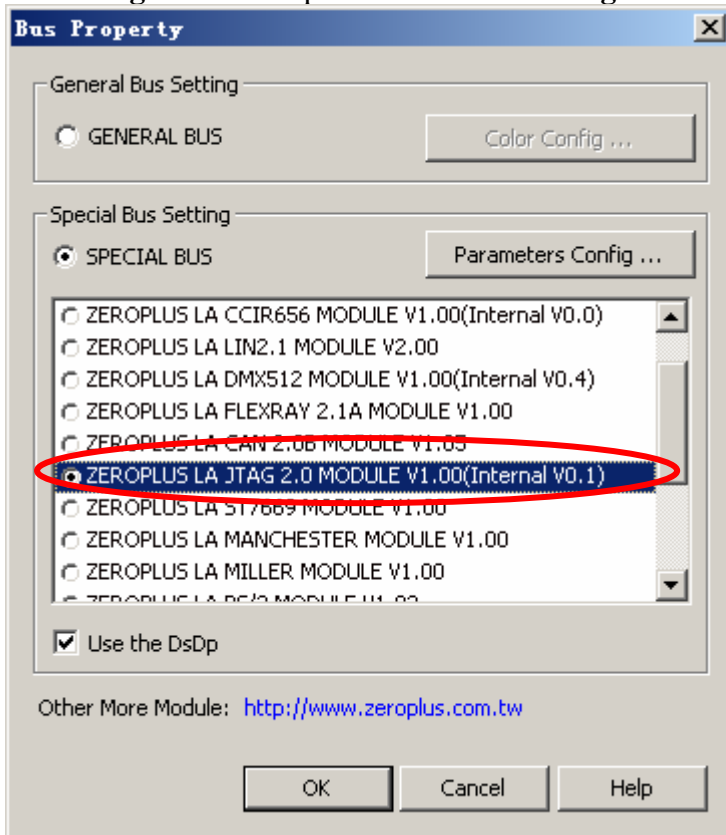
**STEP 1.** At first, group the unanalyzed channel into **Bus 1** by pressing the **Right Key** on mouse.



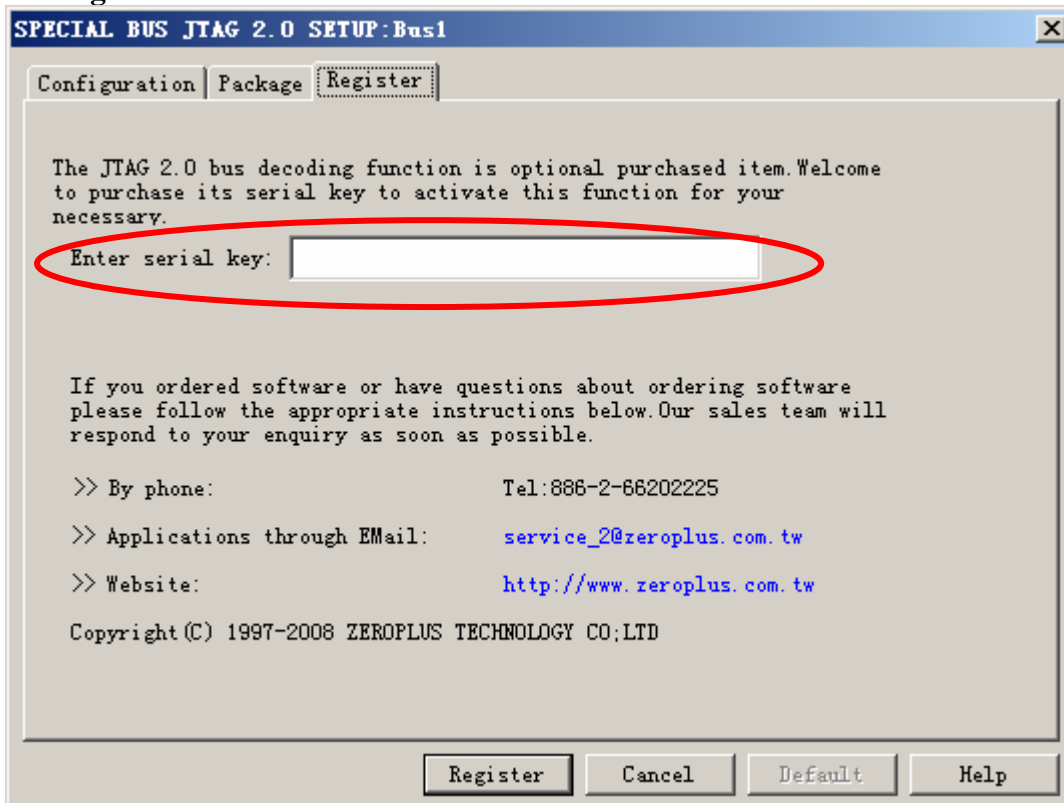
**STEP 2.** Select **Bus1**, then press **Right key** on mouse to list menu, then press **Bus Property** or **Bus bar** on the toolbar to open **Bus Property** dialog box.



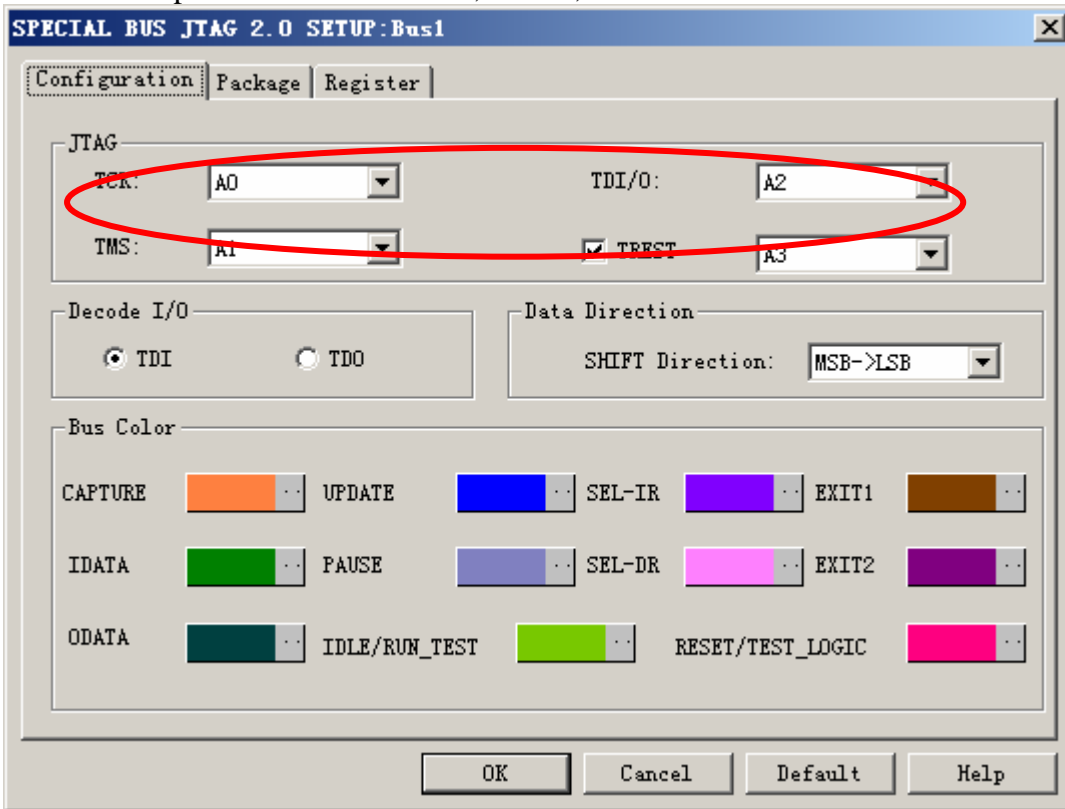
**STEP 3.** For Special Bus JTAG2.0 Parameter Configuration, select Special Bus, and then choose **ZEROPLUS LA JTAG2.0 MODULE V1.00 (Internal V0.1)**. Next click **Parameters Configuration** to open **Parameters Configuration** dialog box.



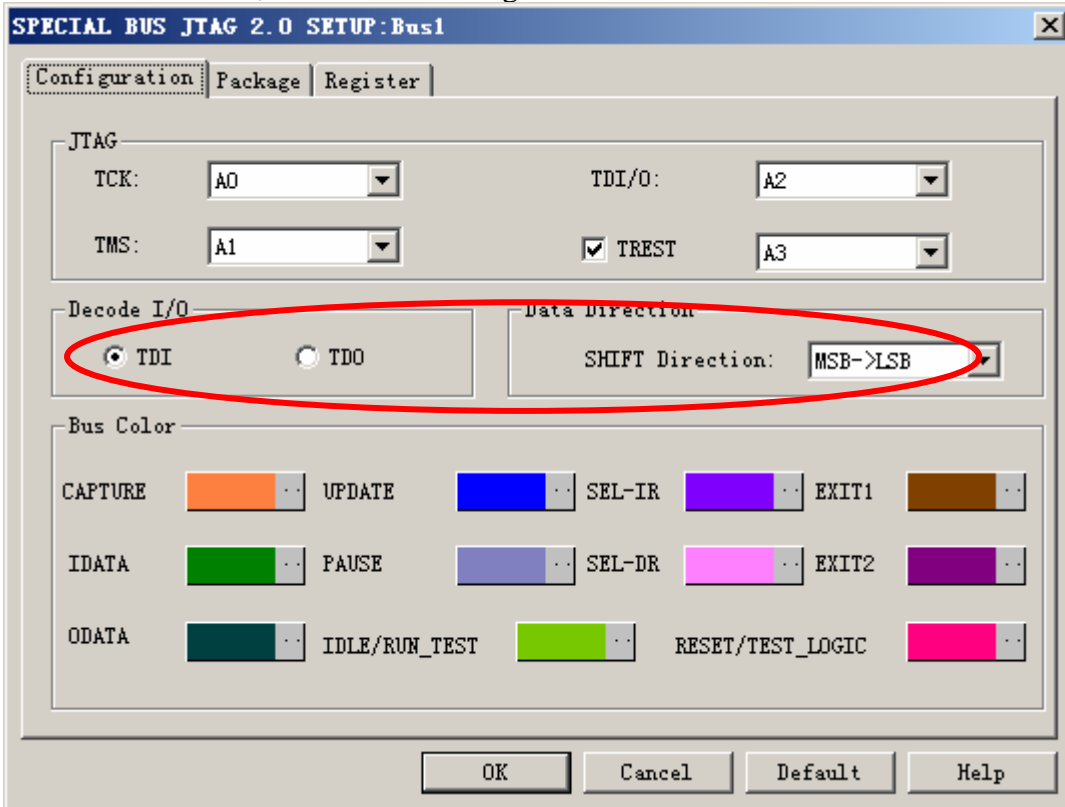
**STEP 4.** Press Register tab to type the serial key number of logic analyzer. Then, press **Register**.



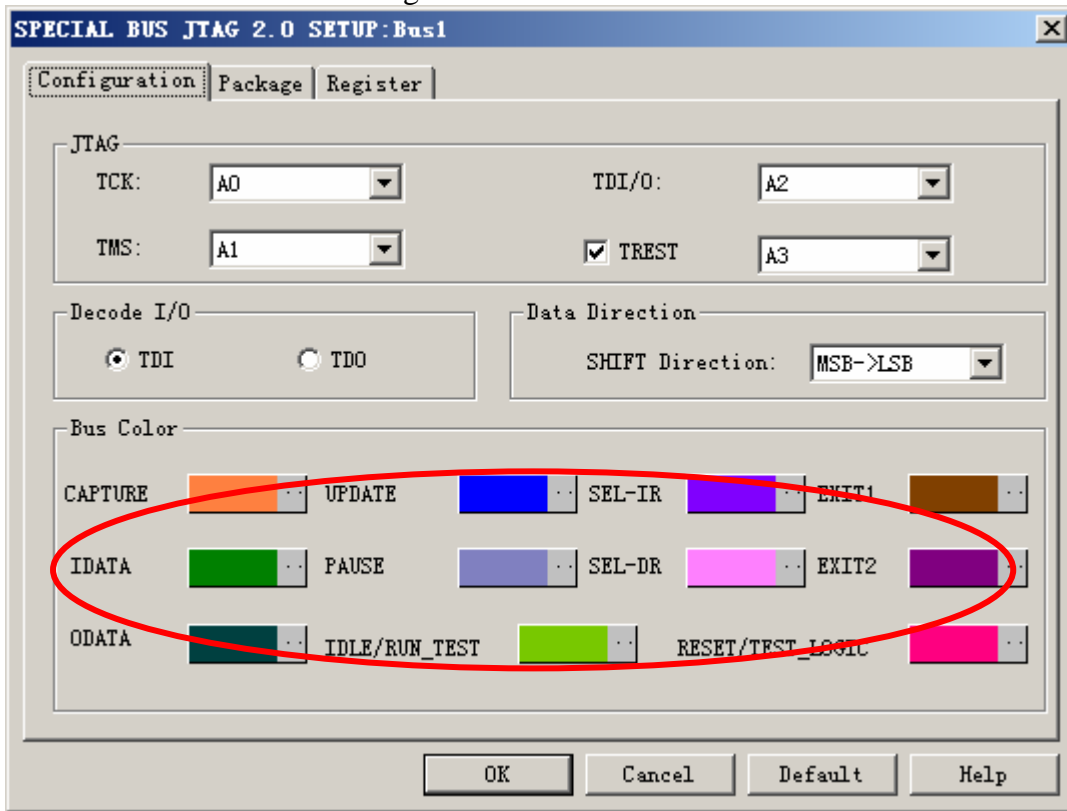
**STEP 5.** After Registering on the register dialog box, open the Configuration dialog box and then set up the channels for TCK, TDI/O, TMS and TREST.



**STEP 6.** Next, select the decoding mode of Decode I/O and the direction of SHIFT.

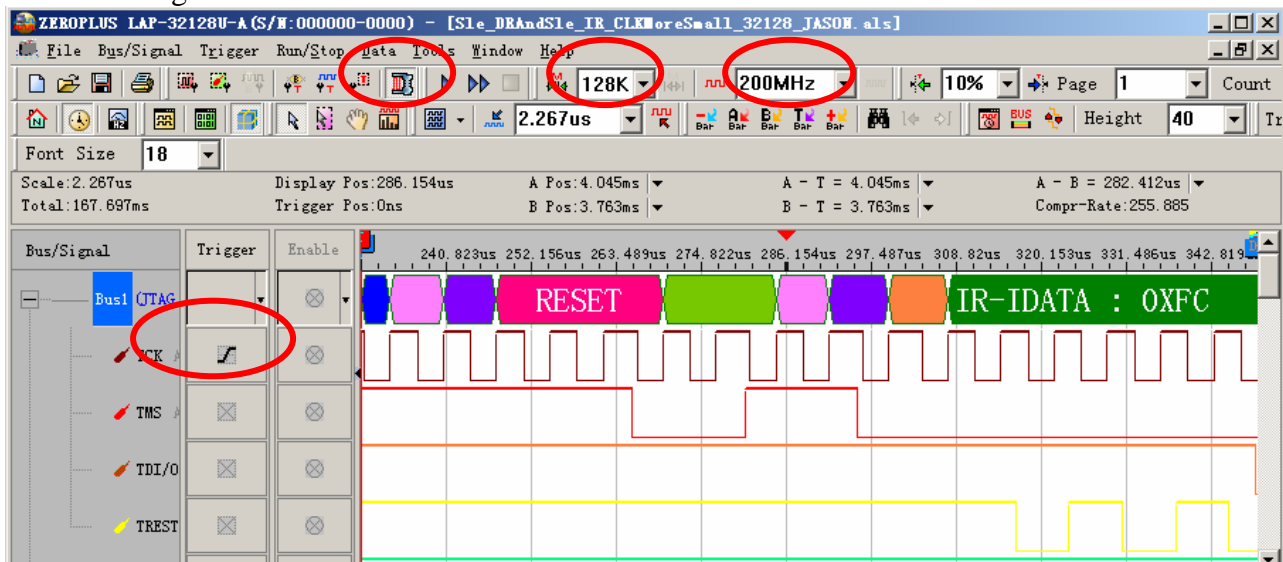


**STEP 7. Bus Color Setting.**



**STEP 8.** Following pictures show that the completion of the Bus decoding and package list. The conditions are set as Rising edge, Memory depth is 128K, Sampling frequency is 200MHz and the compression is activated.

**Bus Decoding**



**Package List**

