



孕龍科技股份有限公司
ZEROPLUS TECHNOLOGY CO.,LTD

Instrument Business Department

ST7669 Specification

Version: V1.0

Content

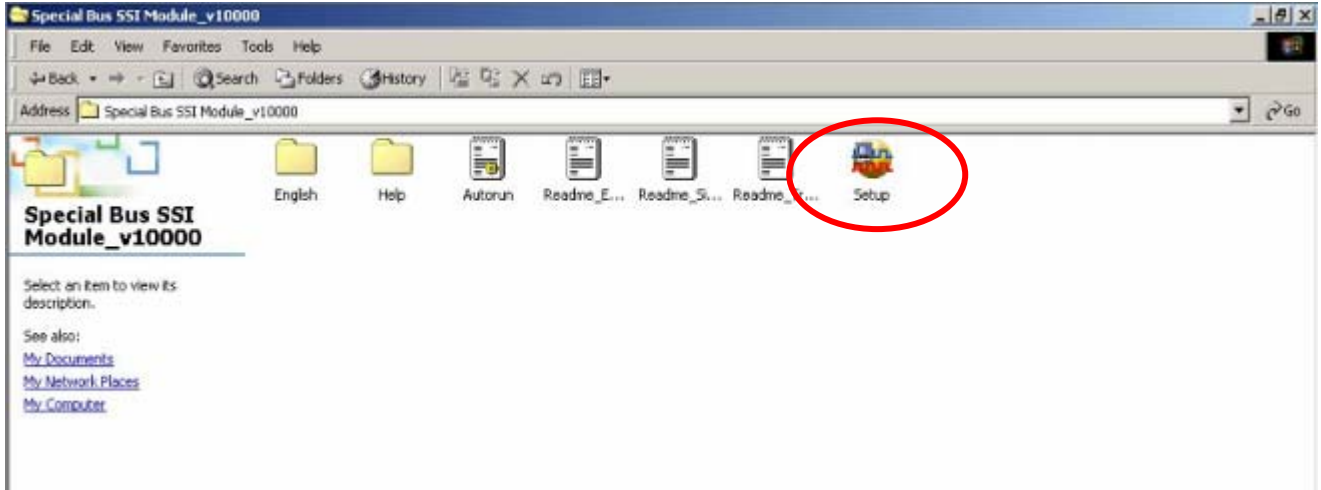
1	Software Installation.....	3
2	User Interface	7
3	Operating Instructions	9

1 Software Installation

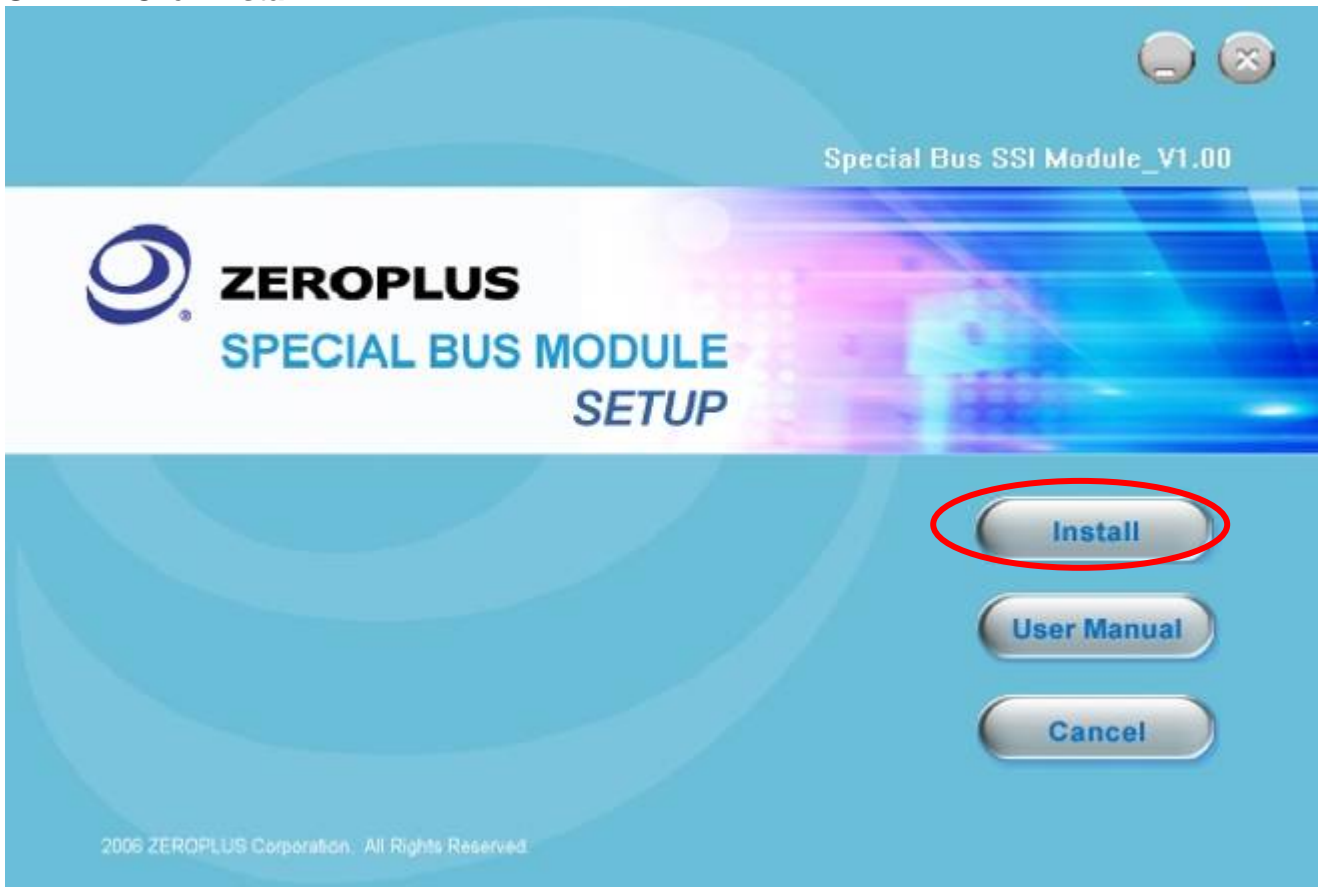
Please follow below steps to install the software:

※Remark : The Installation steps for all Buses are the same,you can complete installation as following procedures. The below is an example to install SSI.

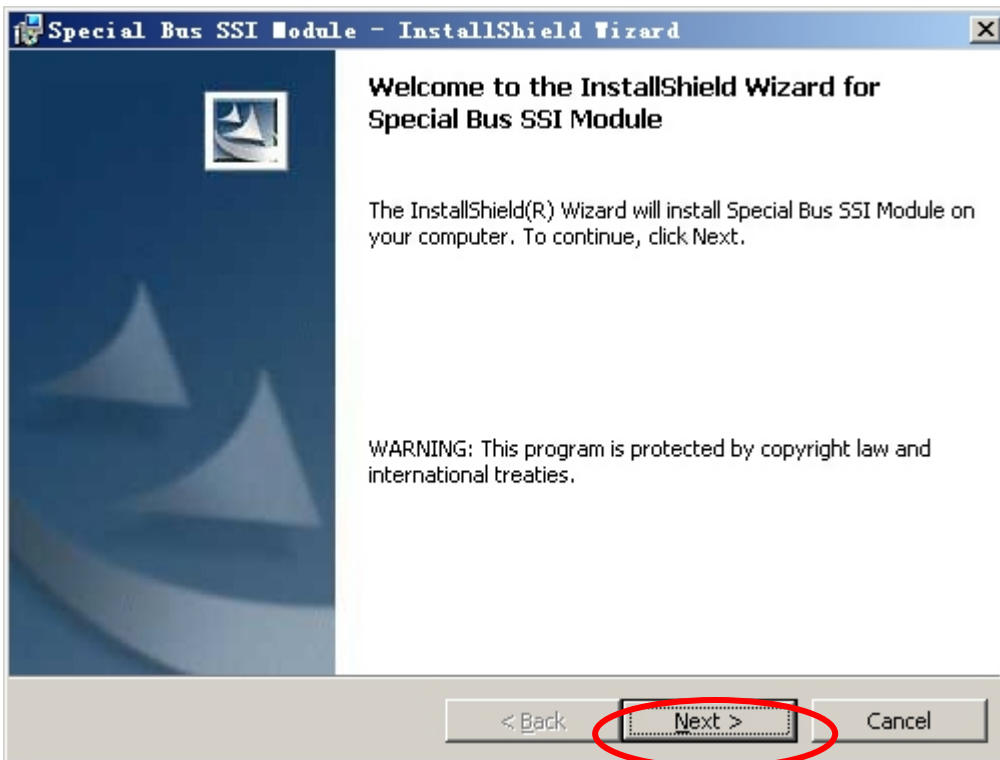
STEP 1. Install BUS Module .



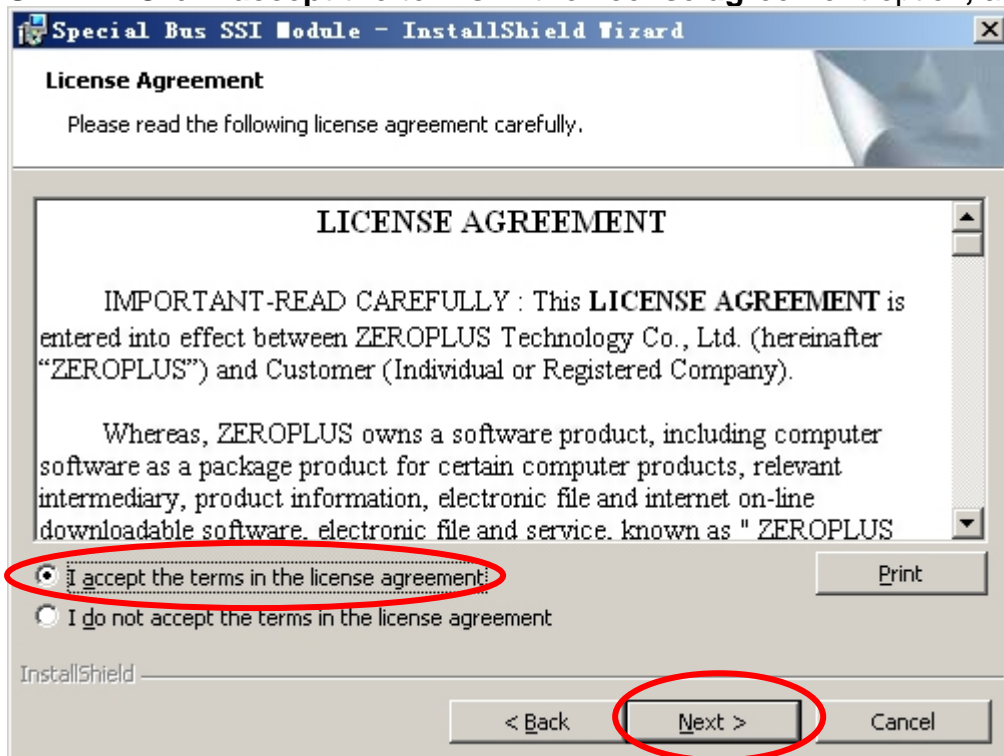
STEP 2. Click Install.



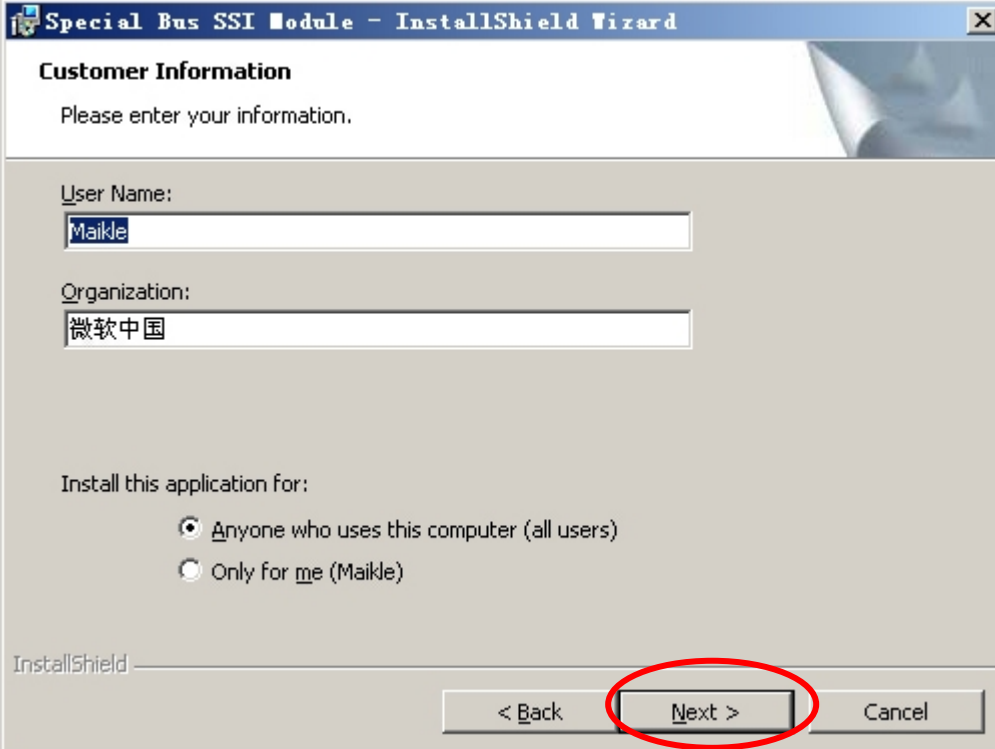
STEP 3. Click Next.



STEP 4. Click I accept the terms in the license agreement option, and press Next.



STEP 5. Fill in user information in the below dialog box and click **Next**.



Special Bus SSI Module - InstallShield Wizard

Customer Information

Please enter your information.

User Name:
Maikle

Organization:
微软中国

Install this application for:

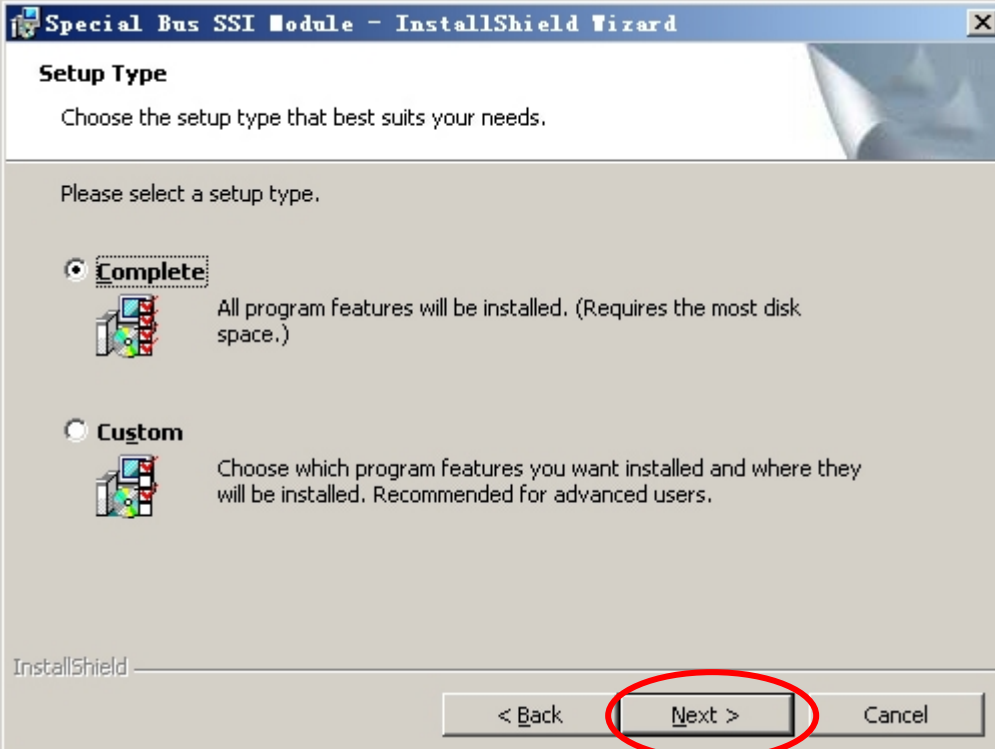
Anyone who uses this computer (all users)

Only for me (Maikle)

InstallShield

< Back Next > Cancel

STEP 6. At first, select the **Complete** option, and then click **Next**.



Special Bus SSI Module - InstallShield Wizard

Setup Type

Choose the setup type that best suits your needs.

Please select a setup type.

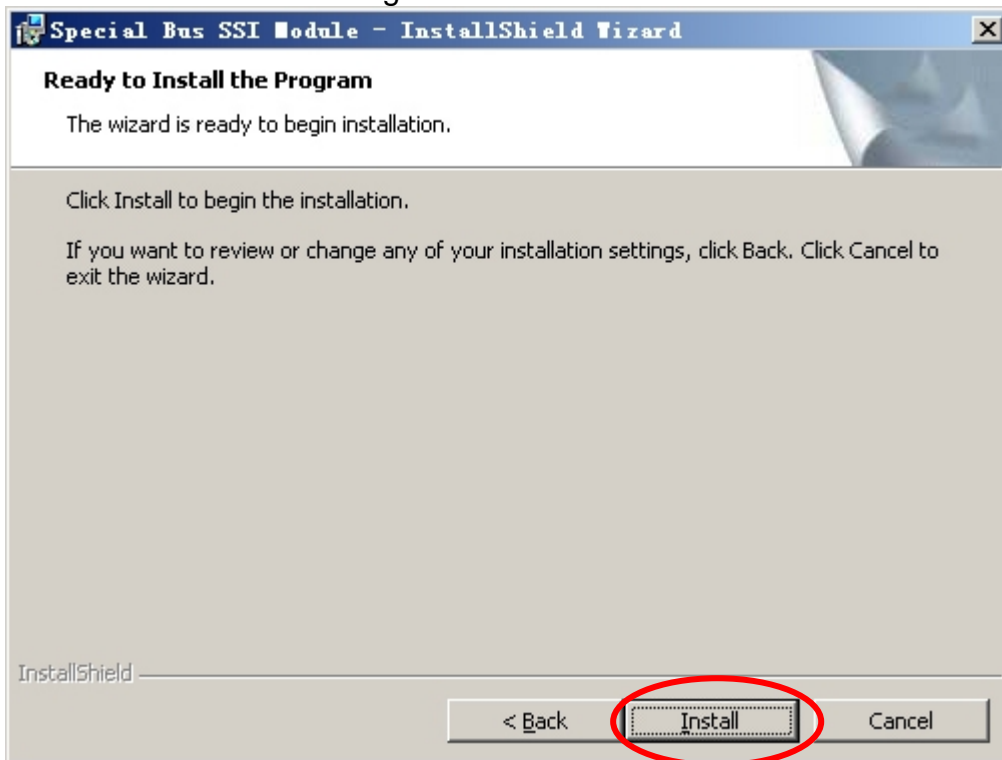
Complete
All program features will be installed. (Requires the most disk space.)

Custom
Choose which program features you want installed and where they will be installed. Recommended for advanced users.

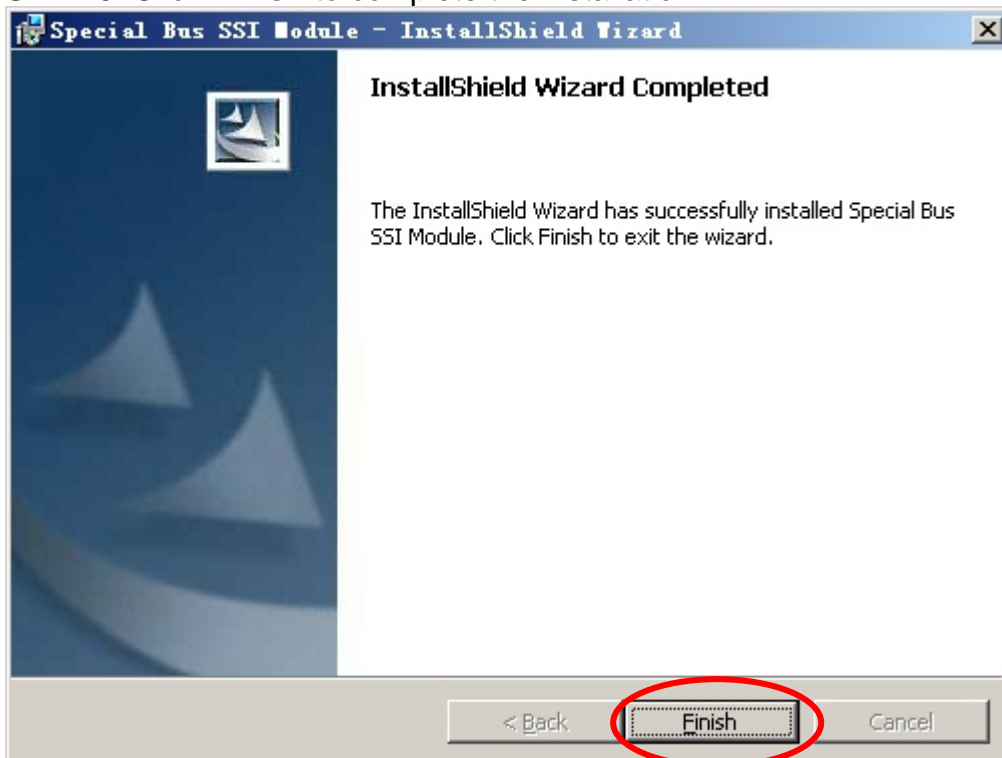
InstallShield

< Back Next > Cancel

STEP 7. Click **Install** to begin the installation.



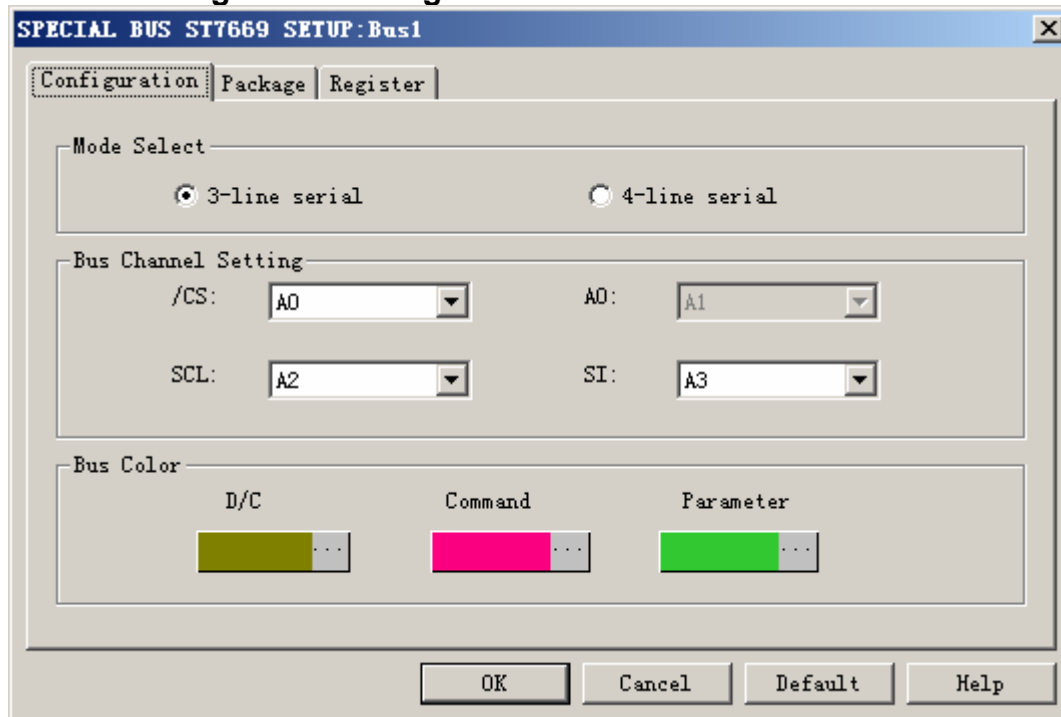
STEP 8. Click **Finish** to complete the installation.



2 User Interface

Please refer to the below image to select options of setting **ST7669 MODULE**.

ST7669 Configuration dialog box



Mode Select :

There are two modes for choice: 3-line serial or 4-line serial, user can select any one of these two modes.

Bus Channel Setting:

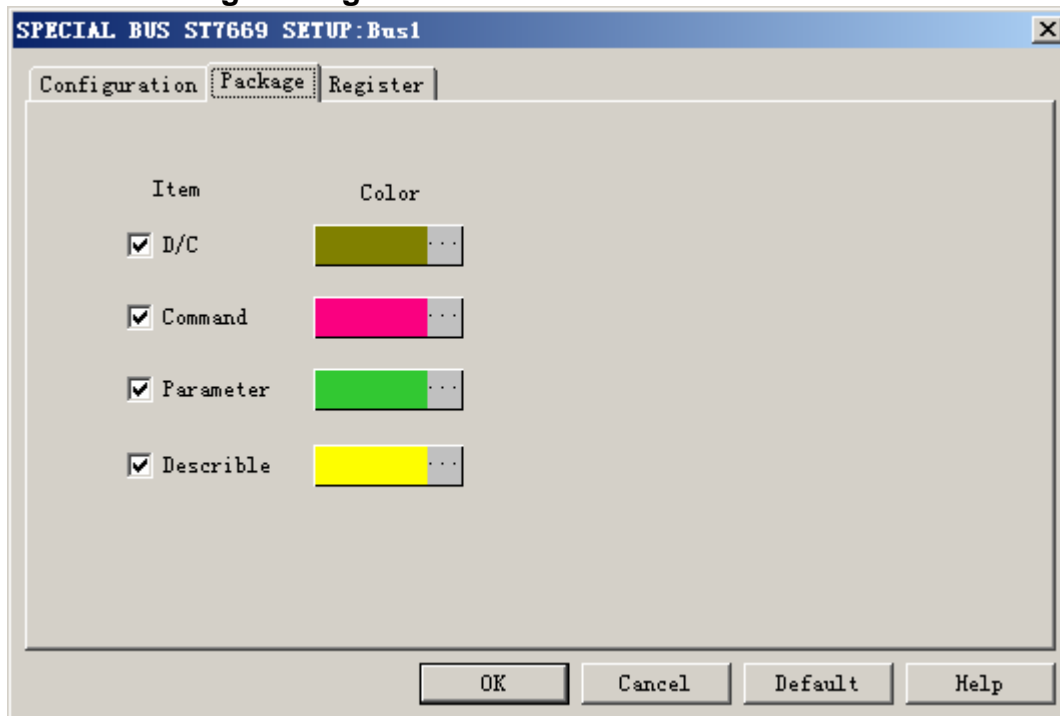
In 3-line serial mode: The A0 channel can't be used, the /Cs channel is defaulted connect with A0, the SCL channel is defaulted to connect with A2, the SI channel is defaulted to connect with A3.

In 4-line serial mode: The /CS channel is defaulted to connect with /CS, the A0 channel is defaulted to connect with A0, the SCL channel is defaulted to connect with SCL , the SI channel is defaulted to connect with SI.

Bus Color Setting :

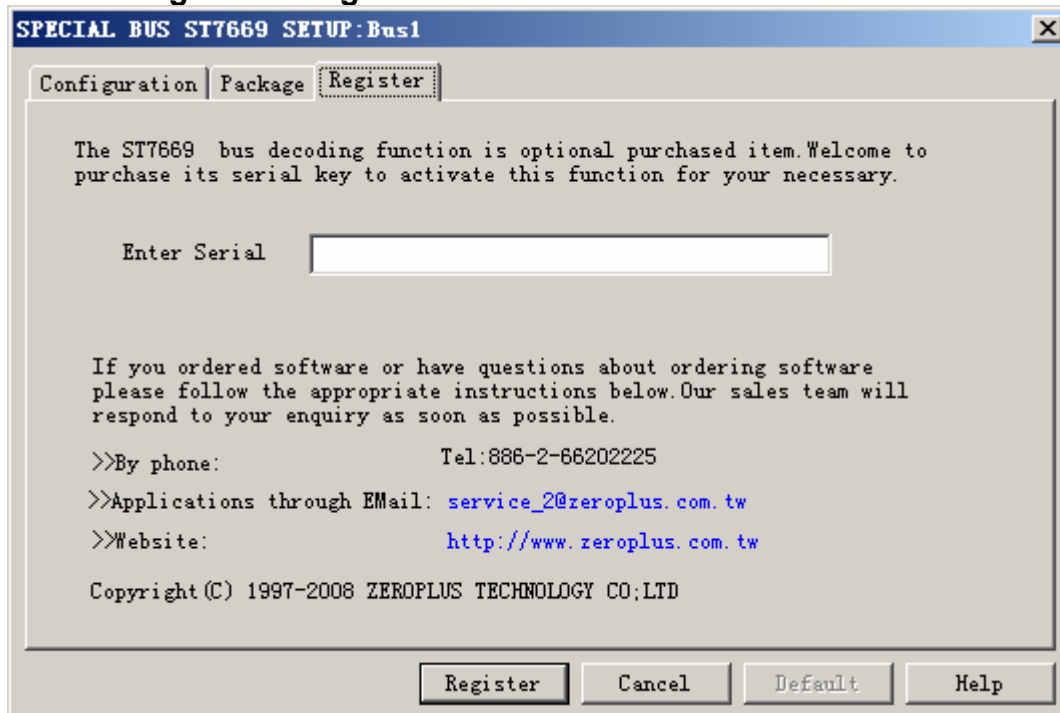
D/C Command Parameter

ST7669 Package dialog box



In the package dialog box, user can vary the colors of the items

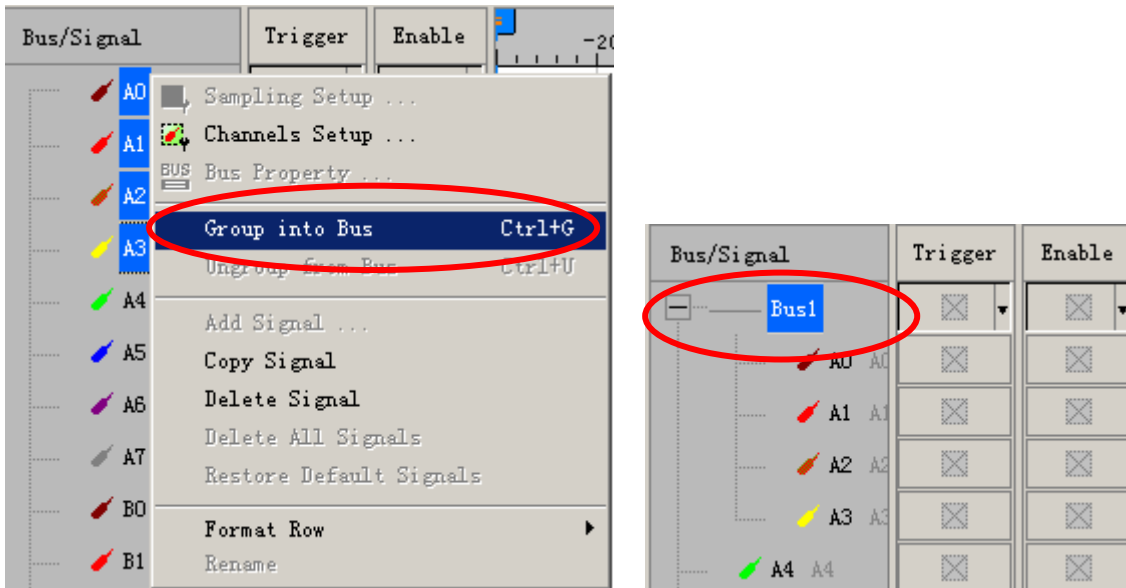
ST7669 Register dialog box.



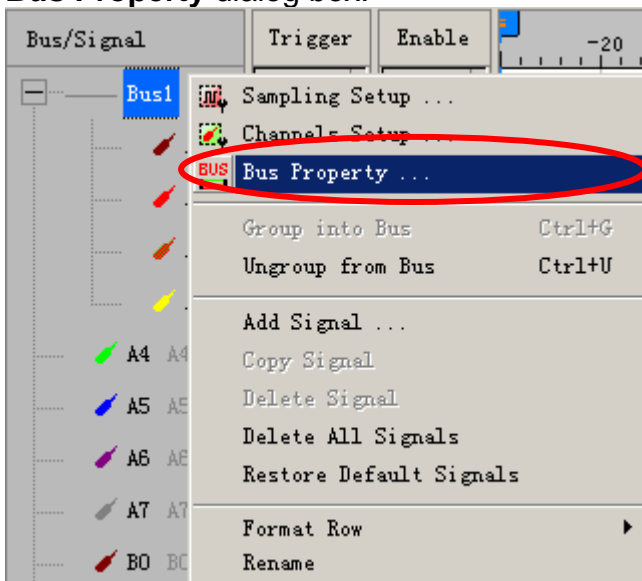
There is written ZeroPlus company information. If you have any questions about software Operations, you can contact ZeroPlus by Telephone or Email.

3 Operating Instructions

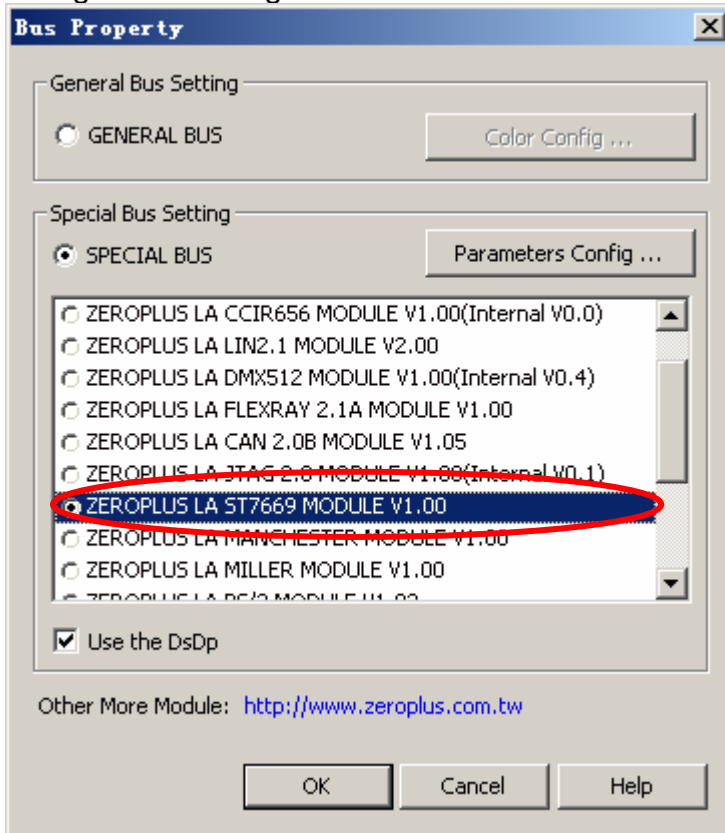
STEP 1. At first, group the unanalyzed channels into bus1 by pressing the **Right Key** on mouse.



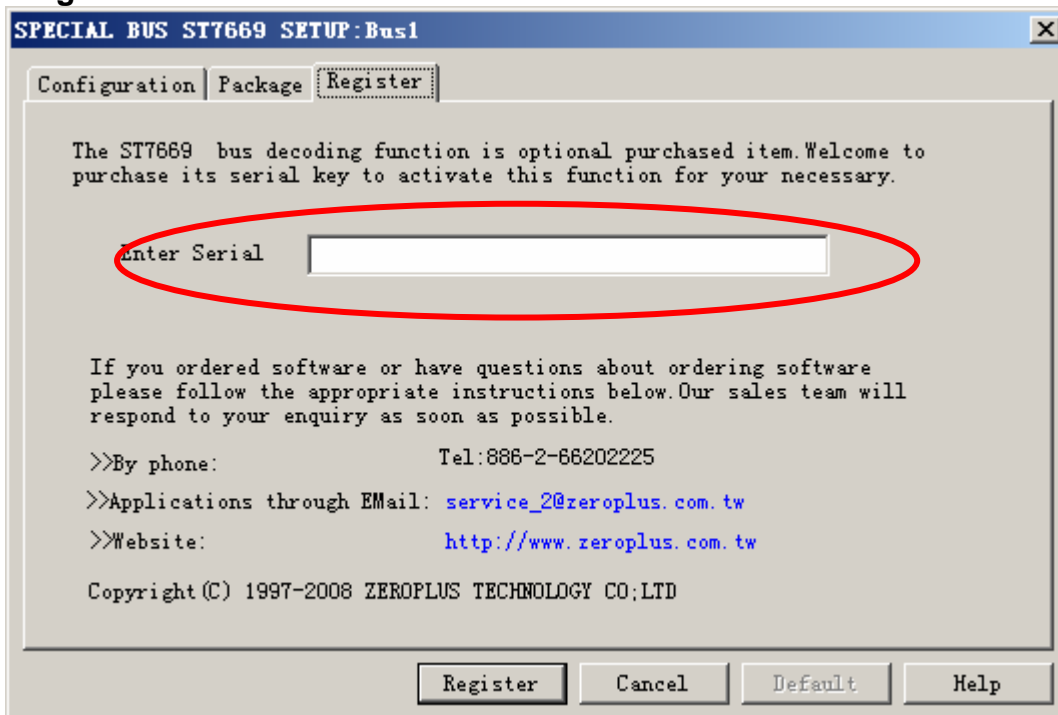
STEP 2. Select **Bus1**, then press **Right** key on the mouse to click **Bus Property** to open the **Bus Property** dialog box.



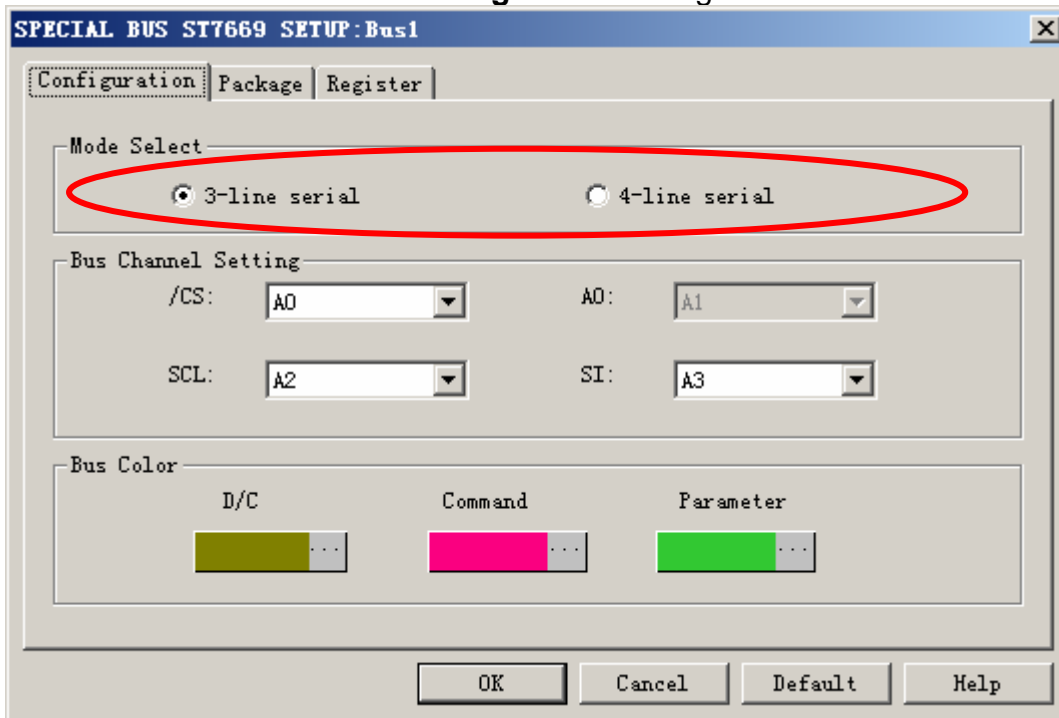
STEP 3. For Special Bus Parameter Configuration, select Special Bus, and then choose **ZEROPLUS LA ST7669 MODULE V1.00**. Next click **Parameters Configuration** to open the configuration dialog box.



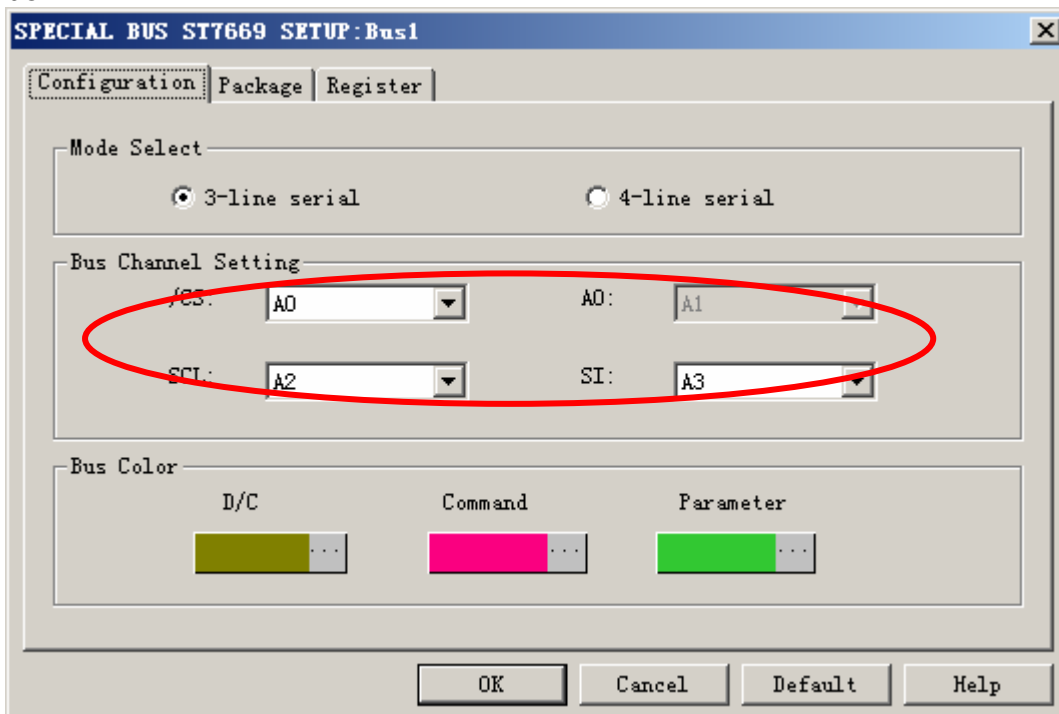
STEP 4. Press Register tab to type the serial key number of ST7669 Module. Then, press **Register**.



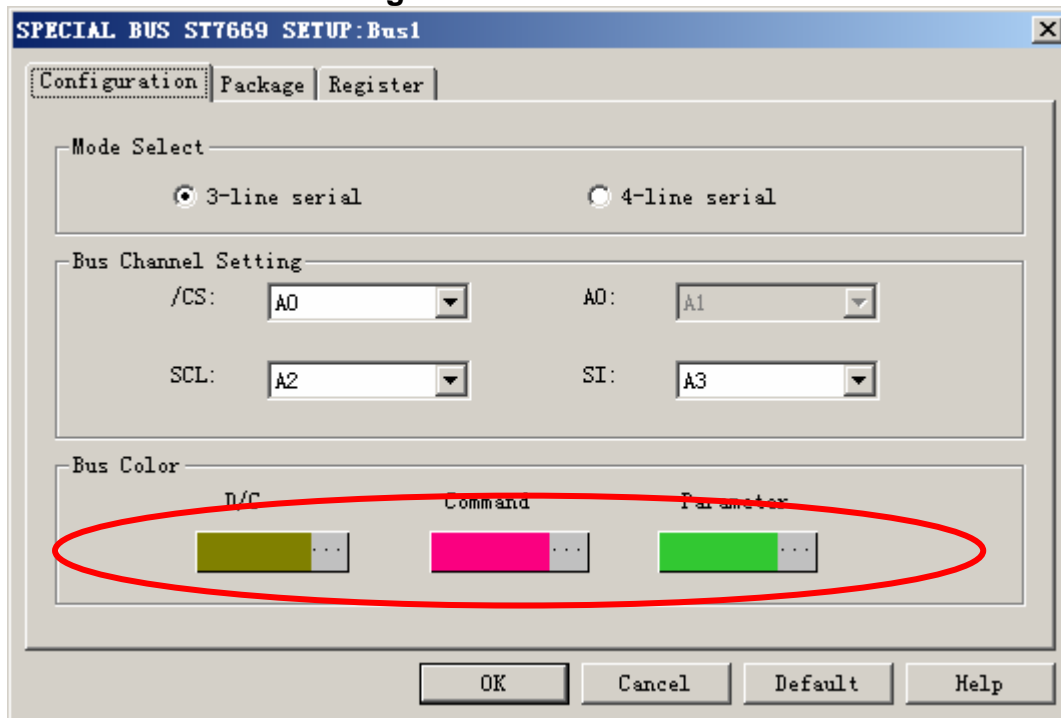
STEP5. After pressing **OK** on registration dialog box, it turns to **Bus Property** dialogue box. Click **Parameters Configuration** to set up the parameter of special bus. Next, setting **ST7669 Mode Select** in the **Configuration** dialog box.



STEP 6. Setting **ST7669 Bus channels (CLK、CMD、DAT0-3)** in the **Configuration** dialog box.

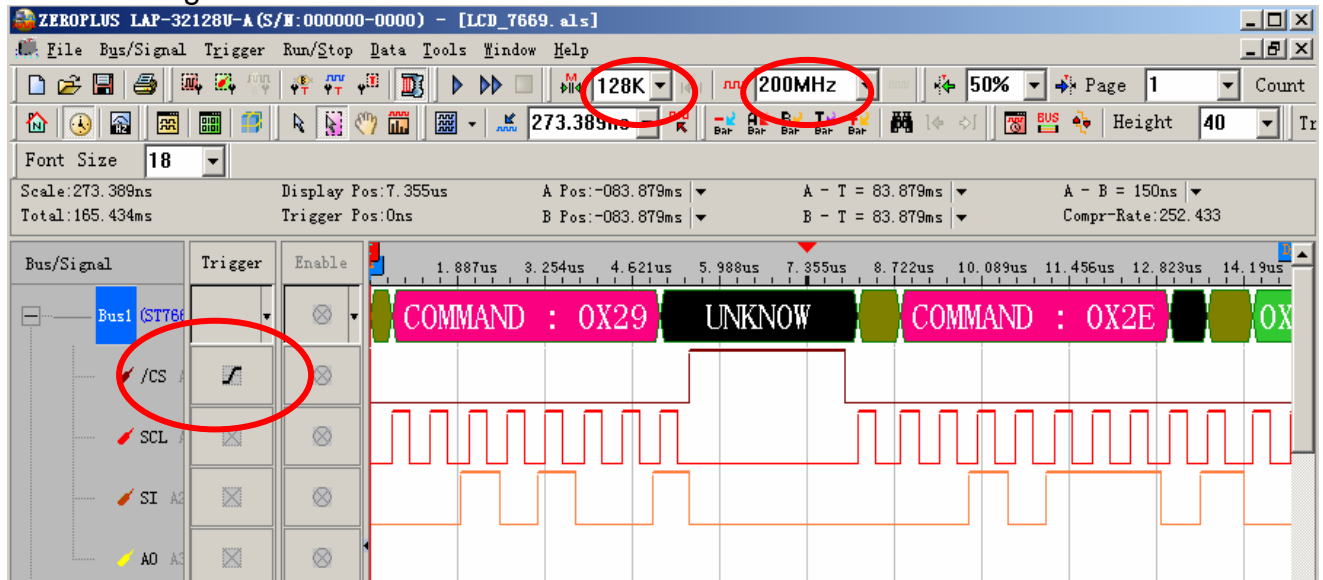


STEP 7. Bus Color Setting



STEP 8. Following pictures show that the completion of the Bus decoding and package list. The conditions are set as rising edge, Memory depth is 128K, Sampling frequency is 200MHz.

Bus decoding



Package list

