



**孕龍科技股份有限公司**  
**ZeroPlus Technology Co., Ltd.**

# SPECIFICATION

**MODEL: SM 2.0 Specification**

**PART NO : B08017**

**VERSION : V1.01**

Approver		Check	Design
GM	PM		

Customer Confirm

\* After signature you fax to zeroplus company , please .

2F, NO.123, Jian Ba Rd,  
Chung Ho City, Taipei Hsian, R.O.C.

Tel:+886-2-66202225  
Fax:+886-2-22234362



---

## Content

1 Software Installation .....	3
2 User Interface .....	7
3 Operating Instructions.....	10



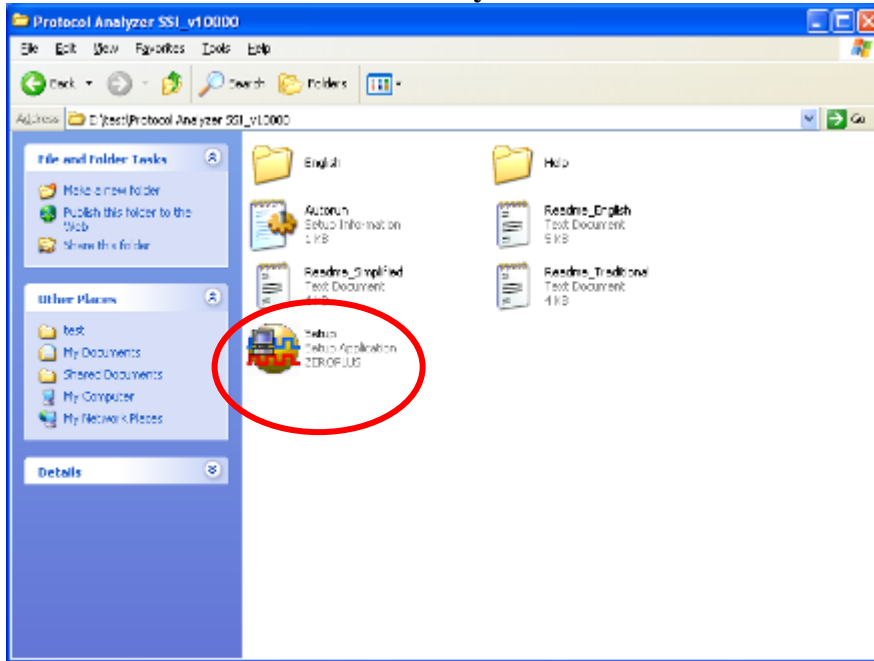
# 1 Software Installation

Please install the software as the following steps:

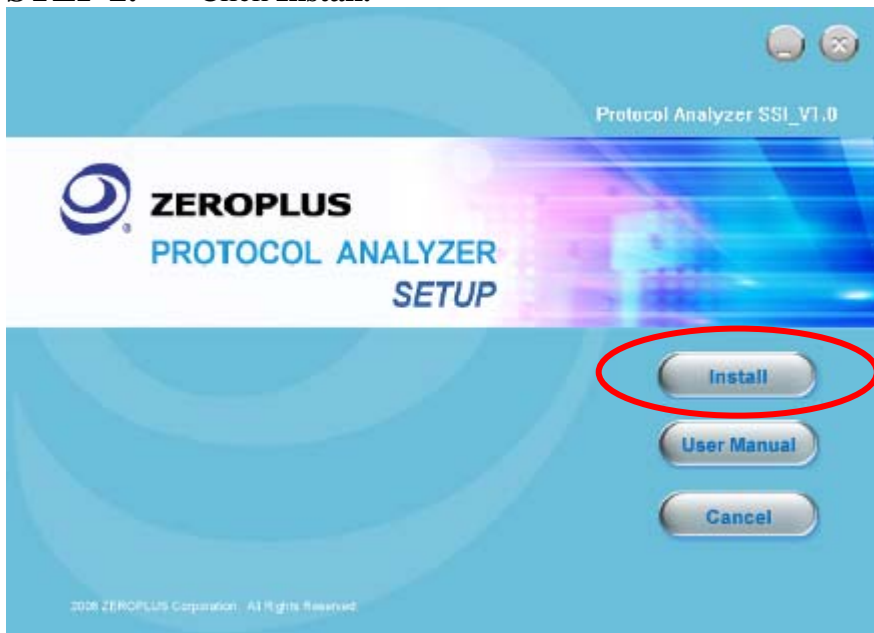
※ Remark: 1.The installation steps for all protocol analyzers are the same; you can complete the installation by following procedures. The following is an example to install protocol analyzer SSI.

※ Remark: 2.We won't have additional notice for you, when there is any modification of the module specification. If there is some unconformity caused by the module version upgrade, users should take the module software as the standard.

## STEP 1. Install Protocol Analyzer Module.

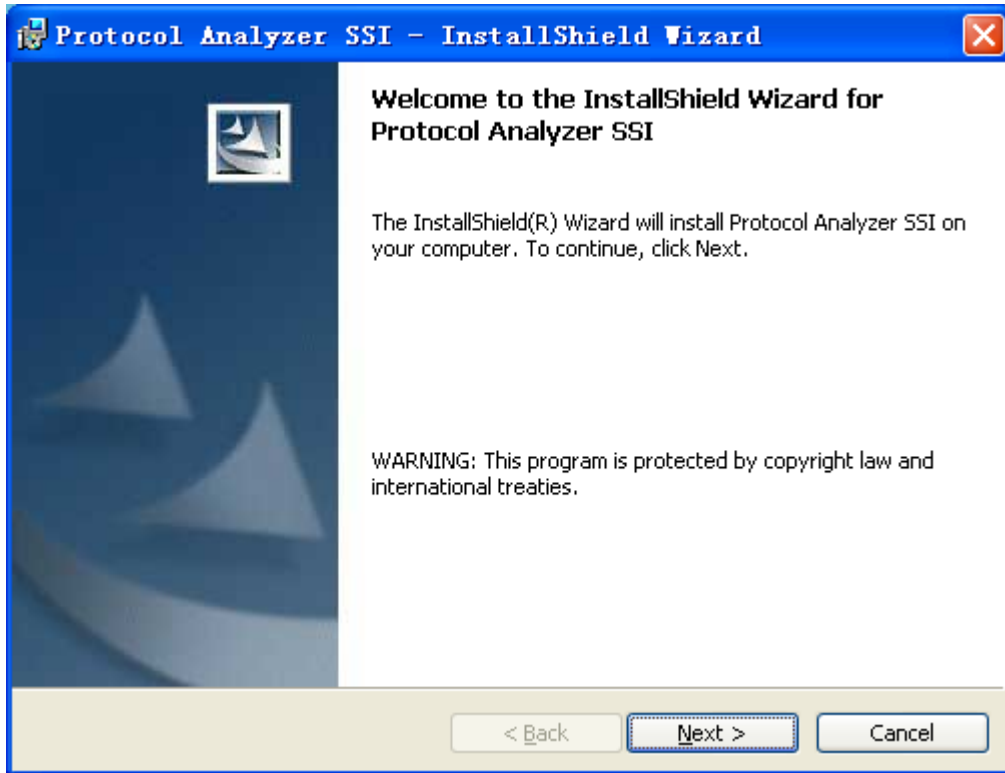


## STEP 2. Click Install.

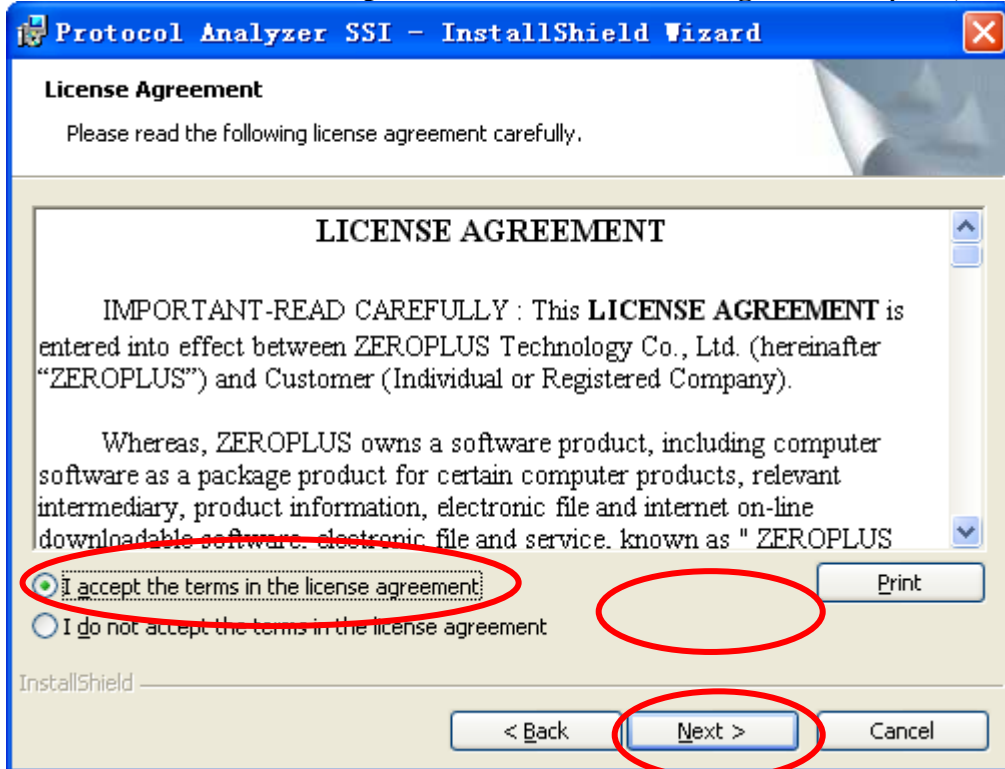




**STEP 3.** Click Next.



**STEP 4.** Select **I accept the terms in the license agreement** option, and then press **Next**.





**STEP 5.** Fill in users' information in the below dialog box and then click **Next**.

**Protocol Analyzer SSI - InstallShield Wizard**

**Customer Information**

Please enter your information.

User Name:  
sunshine

Organization:  
zeroplus

Install this application for:

Anyone who uses this computer (all users)

Only for me (sunshine)

InstallShield

< Back   Next >   Cancel

**STEP 6.** First, select **Complete** and then click **Next**.

**Protocol Analyzer SSI - InstallShield Wizard**

**Setup Type**

Choose the setup type that best suits your needs.

Please select a setup type.

**Complete**  
All program features will be installed. (Requires the most disk space.)

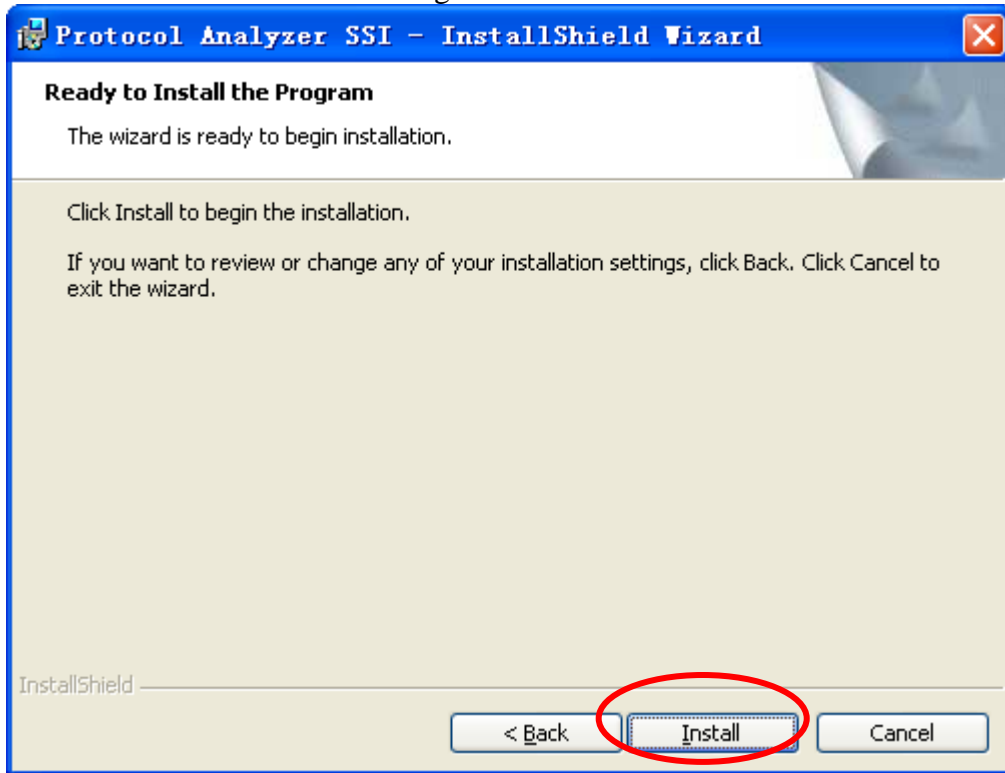
**Custom**  
Choose which program features you want installed and where they will be installed. Recommended for advanced users.

InstallShield

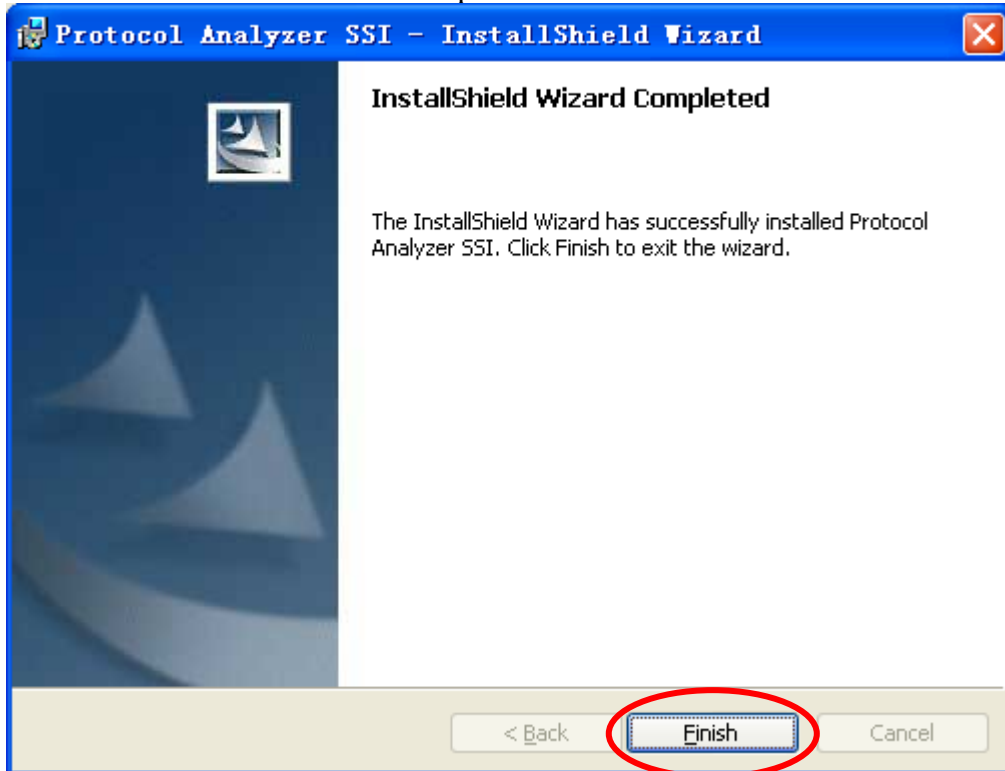
< Back   Next >   Cancel



**STEP 7.** Click **Install** to begin the installation.



**STEP 8.** Click **Finish** to complete the installation.

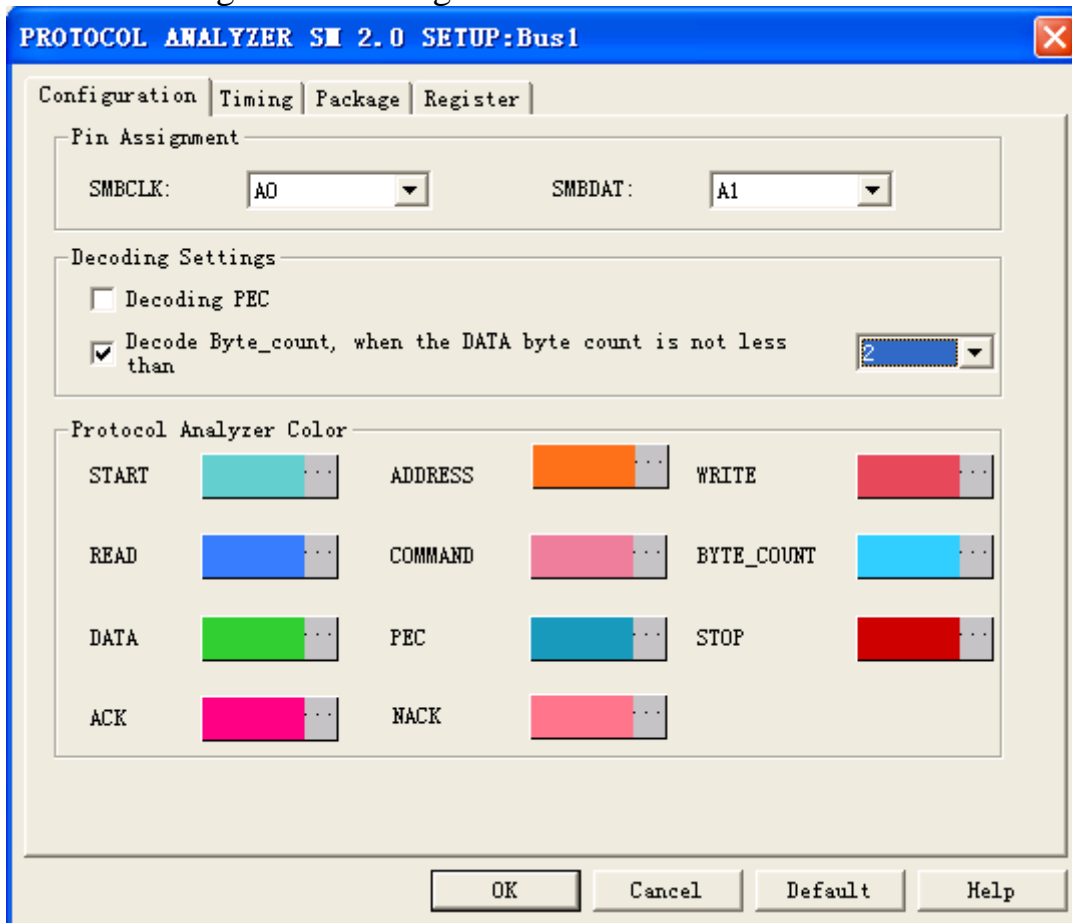




## 2 User Interface

In the configuration dialog box, please refer to the below images to select options of setting **SM 2.0 MODULE**.

### SM 2.0 Configuration Dialog Box



#### Pin Assignment:

Set the corresponding signal lines: the default of SMBCLK is A0; the default of SMBDAT is A1.

#### Decoding Settings:

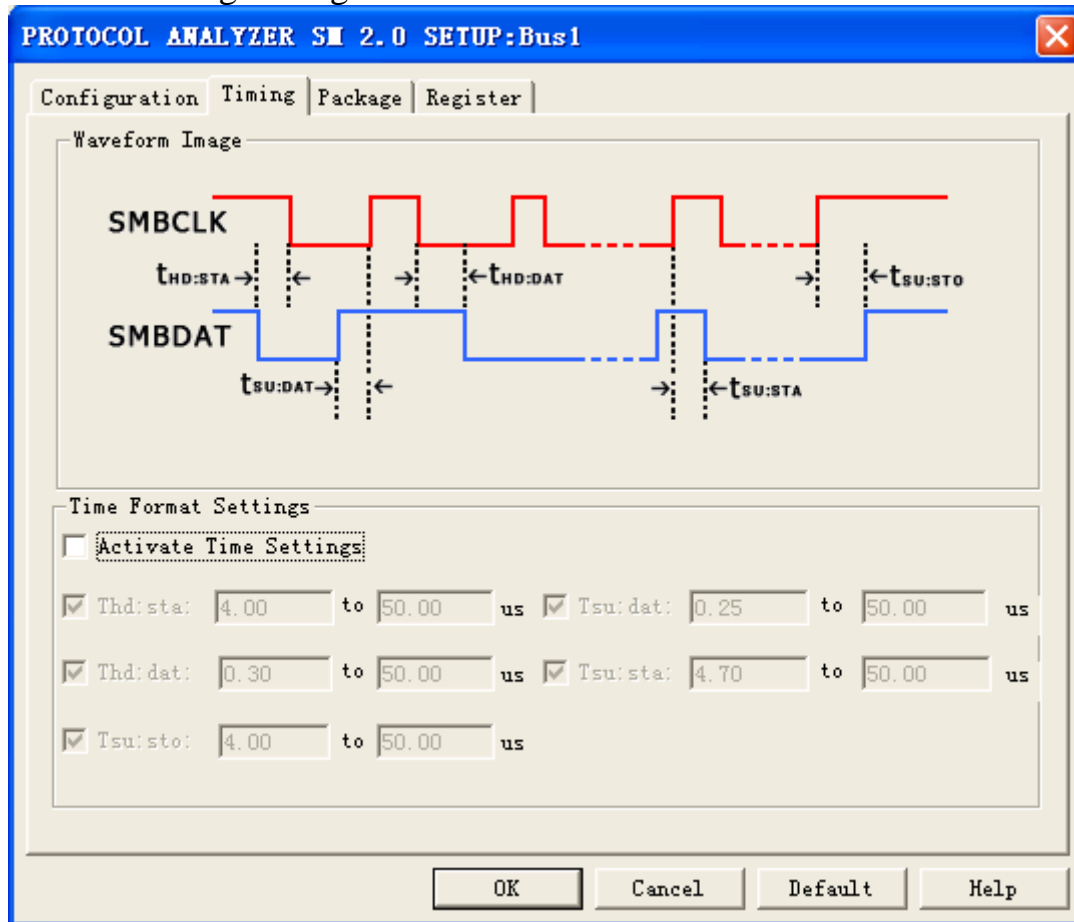
Set the special decoding way, such as Decoding PEC or judging BLACK when decoding PEC, and you can set the necessary Byte-count.

#### Protocol Analyzer Color:

The protocol analyzer colors can be varied by users.



## SM 2.0 Timing Dialog Box



### Waveform Image:

Describe the position of the set time.

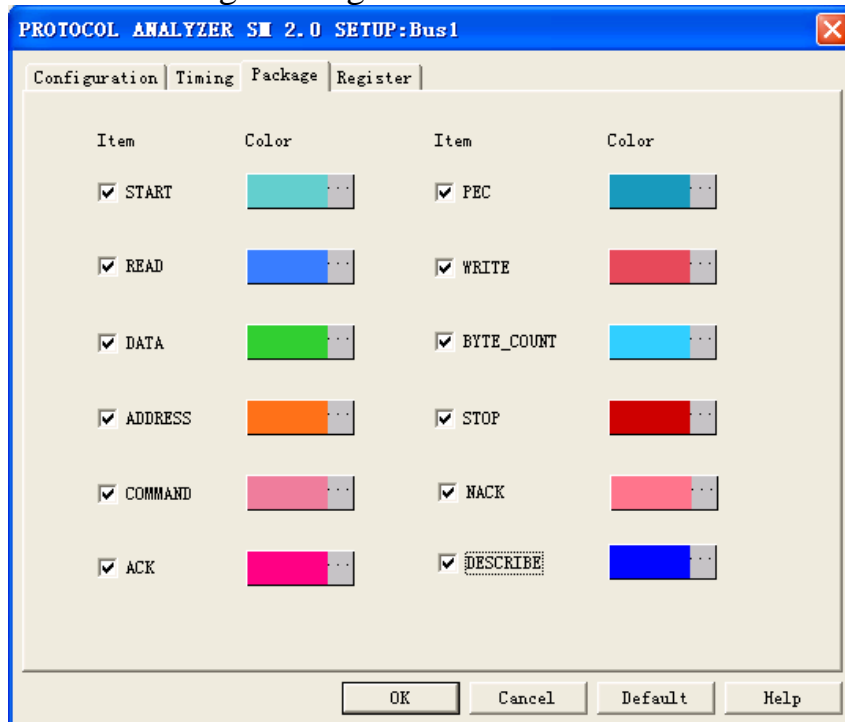
### Time Format Settings:

It can set the time after activating time settings. The set time can be taken as the condition of judging decoding. For example, decoding START, firstly judge whether the condition of START is coincident or not, then judge whether the set time of Thd: sta coincides with the factual waveform. It can start decoding START when both of the two conditions are coincident. The other package segments are the same with the above theory.



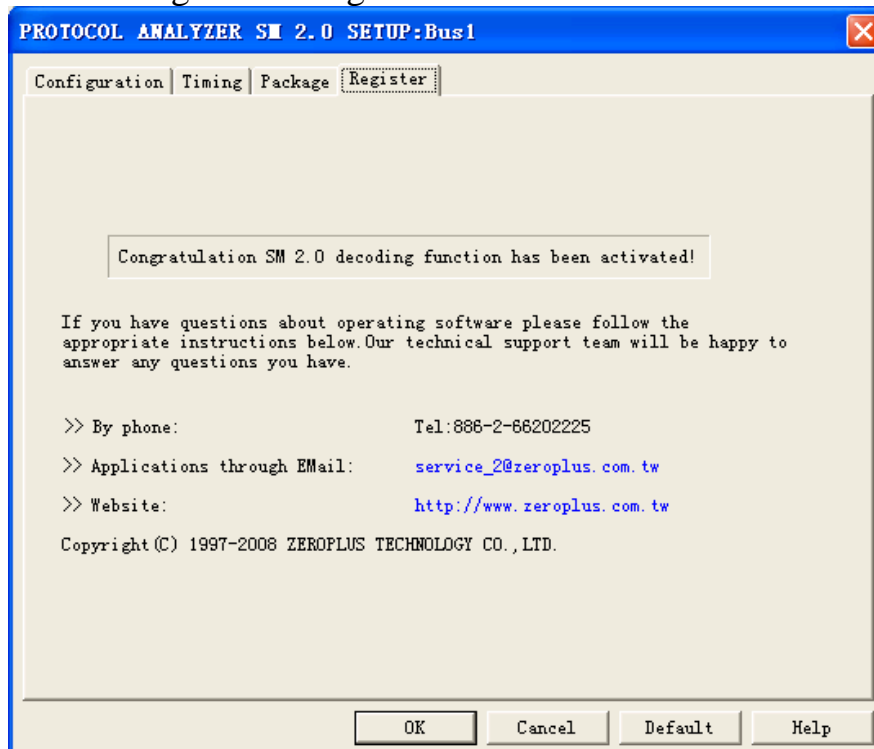


## SM 2.0 Package Dialog Box



In the package part, users can select the items and colors configuration according to users' requirements. You can also select whether to display them on the package list or not.

## SM 2.0 Register Dialog Box



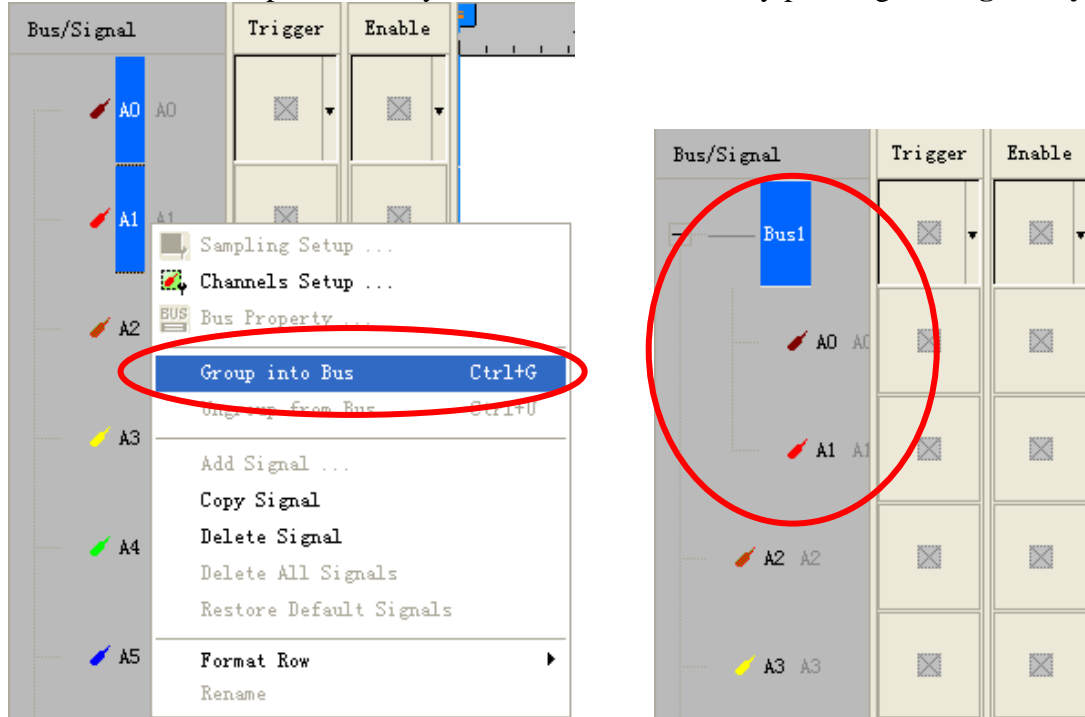
There is written ZeroPlus company information. If you have any questions about software operations,



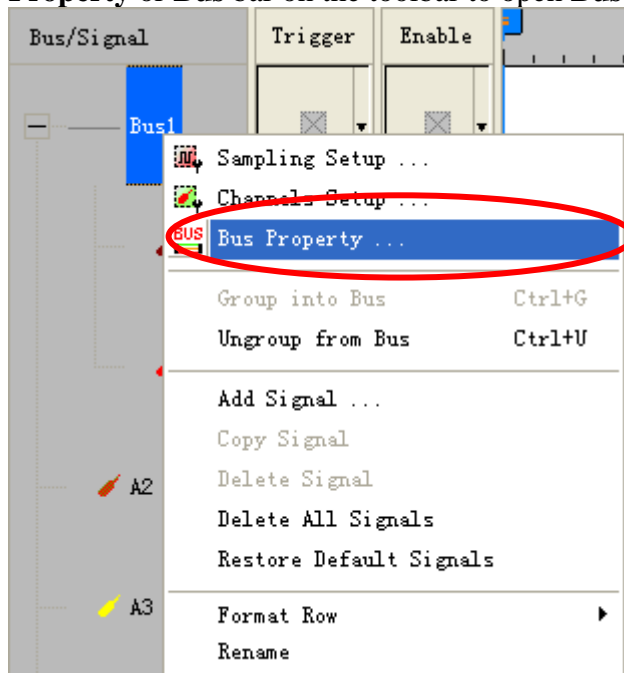
you can contact ZeroPlus by Telephone or Email.

### 3 Operating Instructions

**STEP 1.** Group the unanalyzed channels into **Bus1** by pressing the **Right Key** on the mouse.

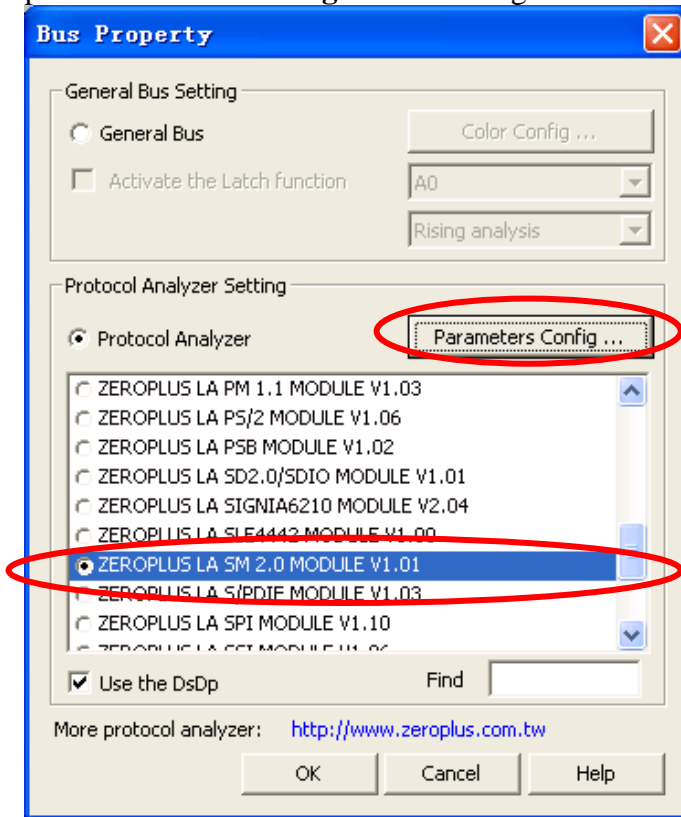


**STEP 2.** Select **Bus1**, then press **Right Key** on the mouse to list menu, then press **Bus Property** or **Bus** bar on the toolbar to open **Bus Property** dialog box.

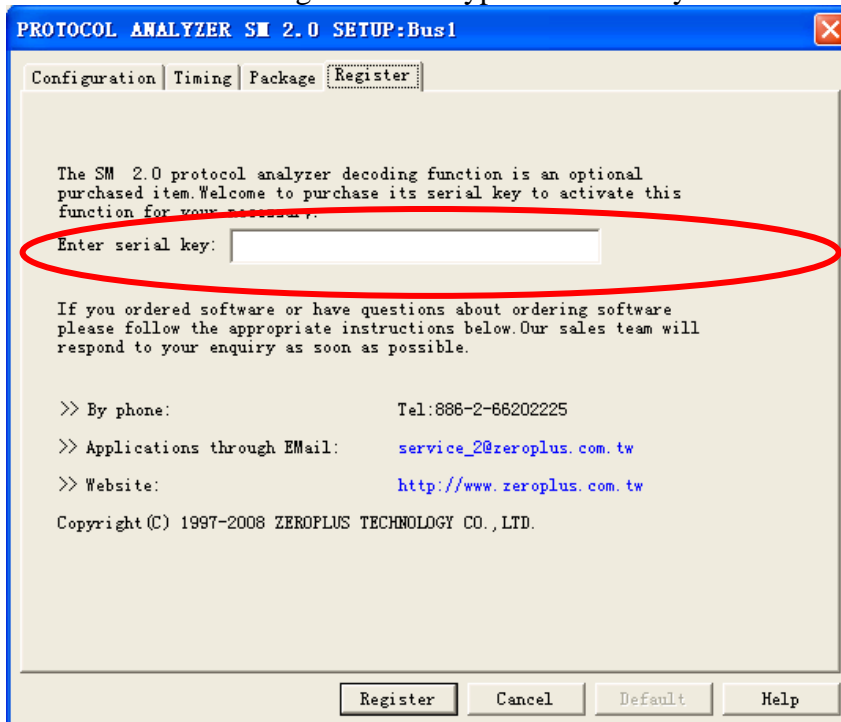




**STEP 3.** For Protocol Analyzer SM 2.0 Parameters Configuration, select Protocol Analyzer, and then select **ZEROPLUS LA SM 2.0 MODULE V1.01**. Next click **Parameters Configuration** to open **Parameters Configuration** dialog box.

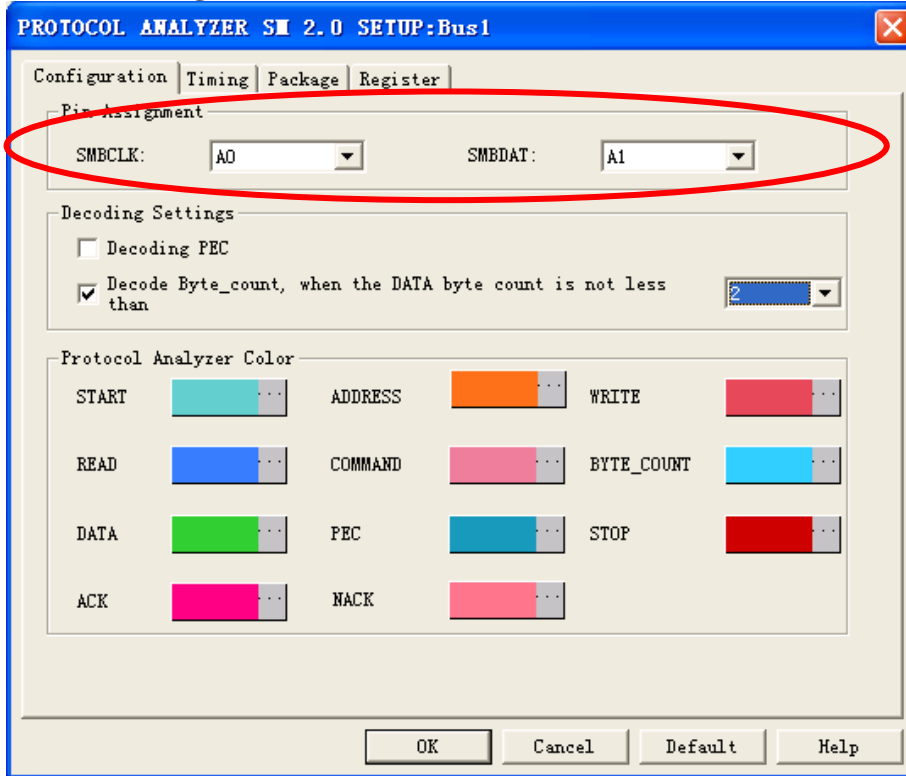


**STEP 4.** Click Register tab to type the serial key number of **SM 2.0**. Then, press **Register**.

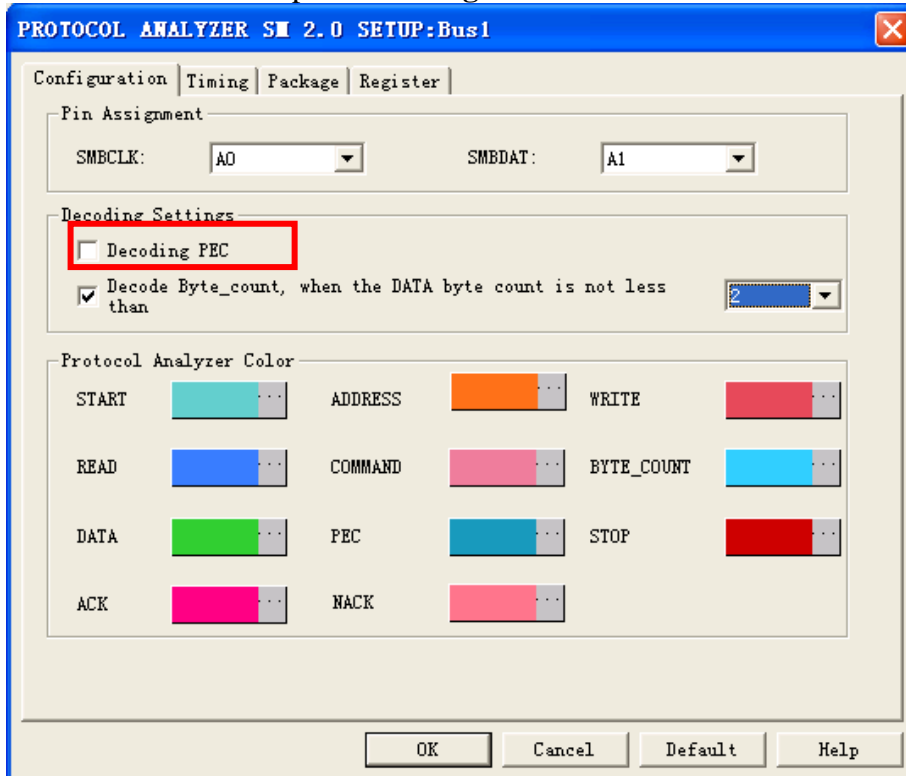




**STEP 5.** Open the configuration dialog box; select the corresponding SM 2.0 signal lines in the part of **Pin Assignment**.

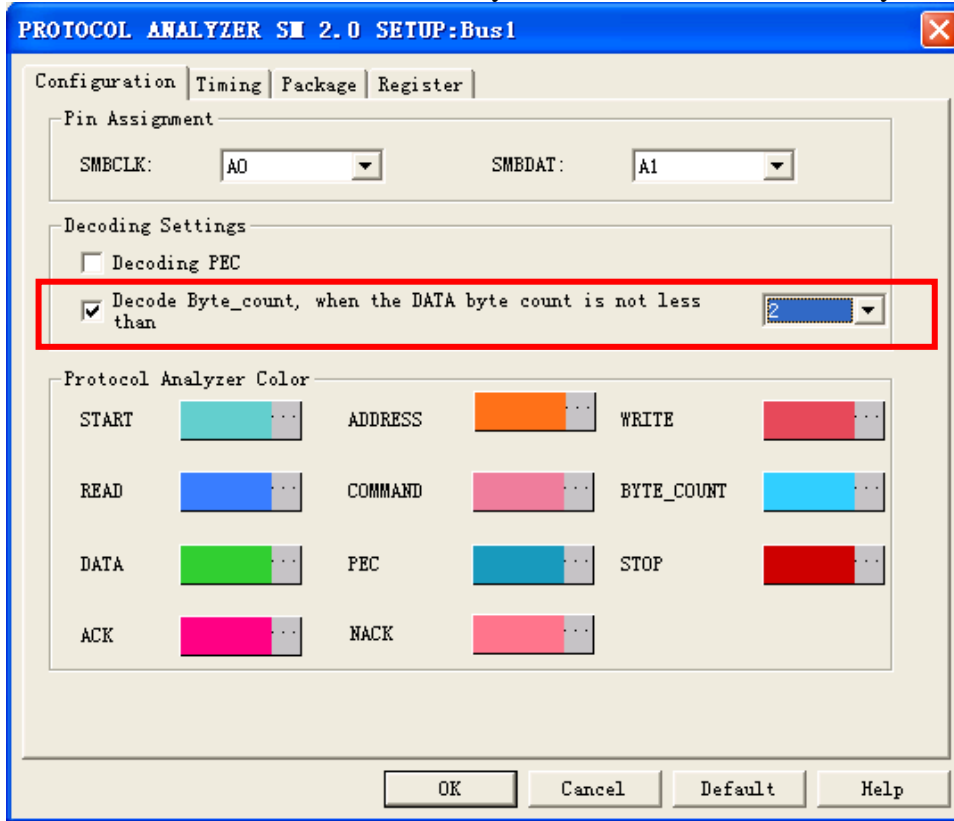


**STEP 6.** The setup of **Decoding PEC**.

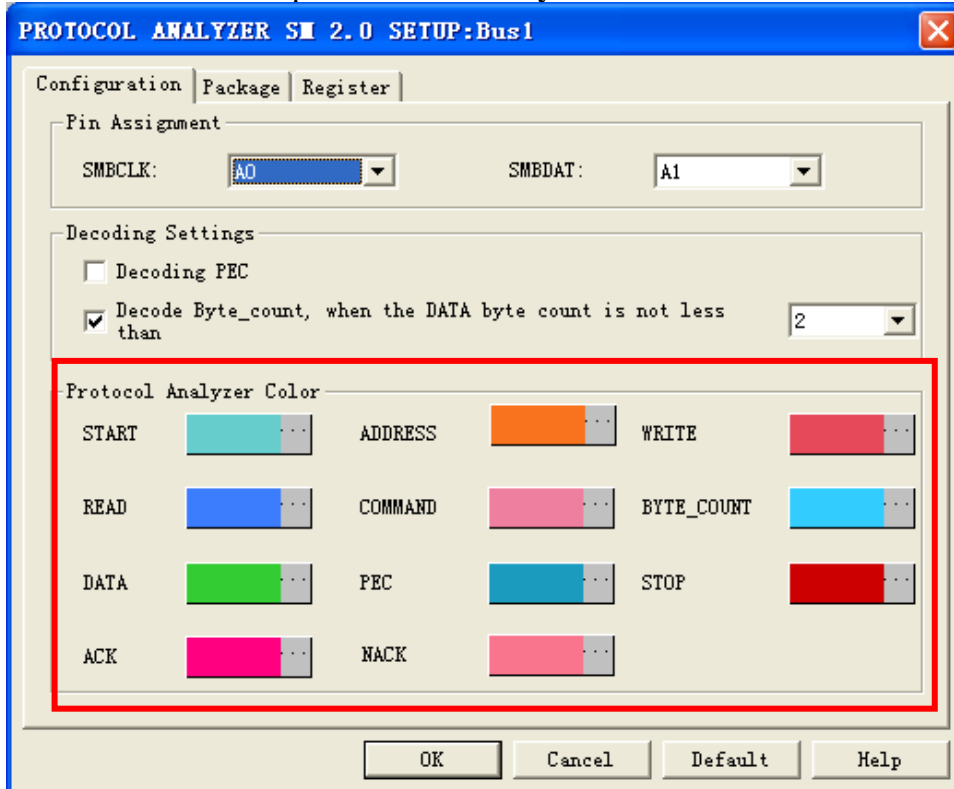




**STEP 7.** When select Decode Byte-count, it needs to set the Byte-count of DATA firstly.

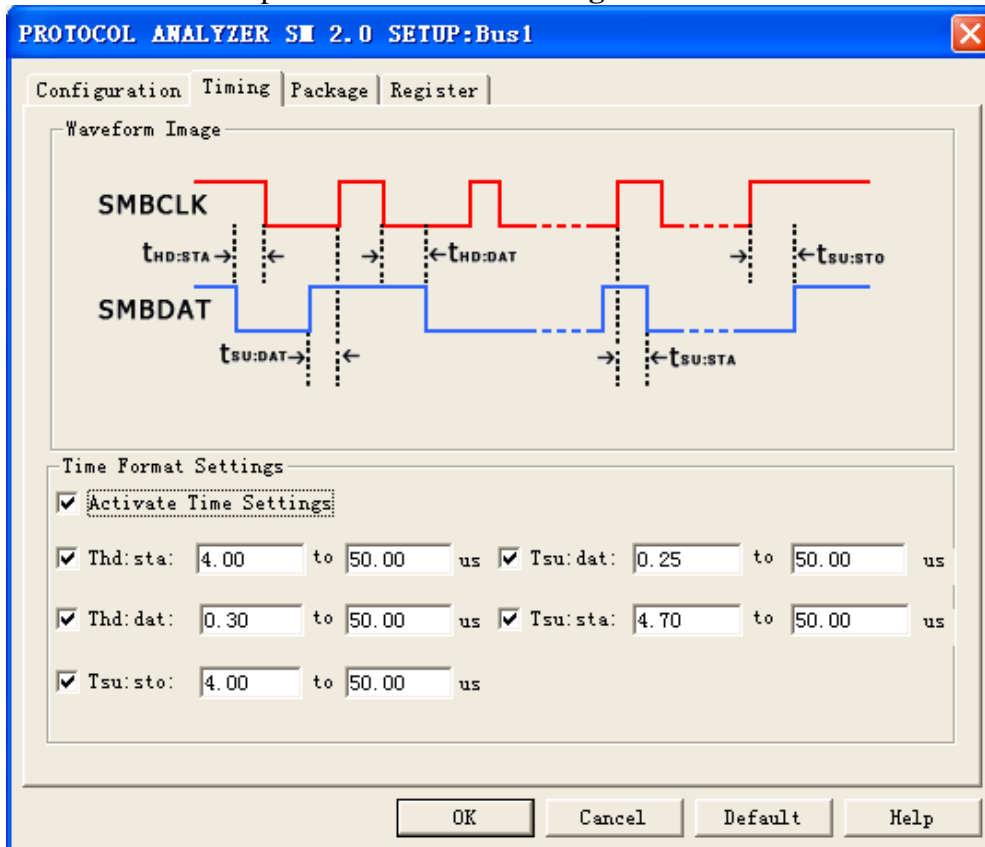


**STEP 8.** The setup of Protocol Analyzer Color.



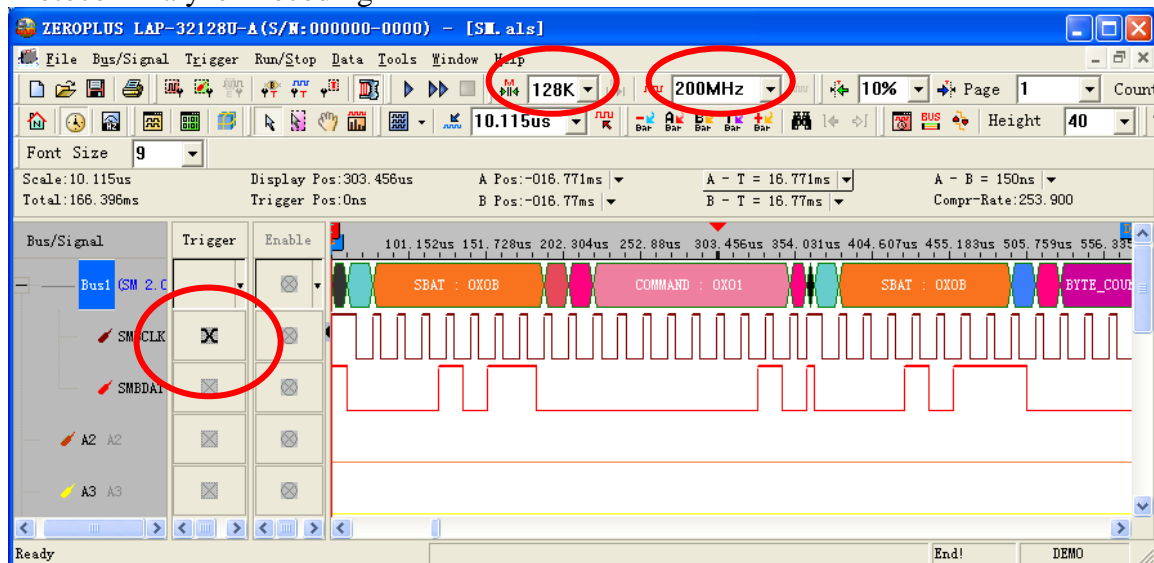


**STEP 9.** The setup of Time Format Settings.



**STEP 9.** Following pictures show the completion of the protocol analyzer decoding and the package list. The trigger condition is set as Either Edge; the memory depth is 128K; the sampling frequency is 200MHZ.

Protocol Analyzer Decoding





The below picture is the waveform display with the package list.

