



孕龍科技股份有限公司
Zeroplus Technology Co., Ltd.

Instrument Business Department

SLE4442 Specification

Version : V1.00



Content

1	Software Installation	3
2	User Interface	7
3	Operating Instructions.....	9

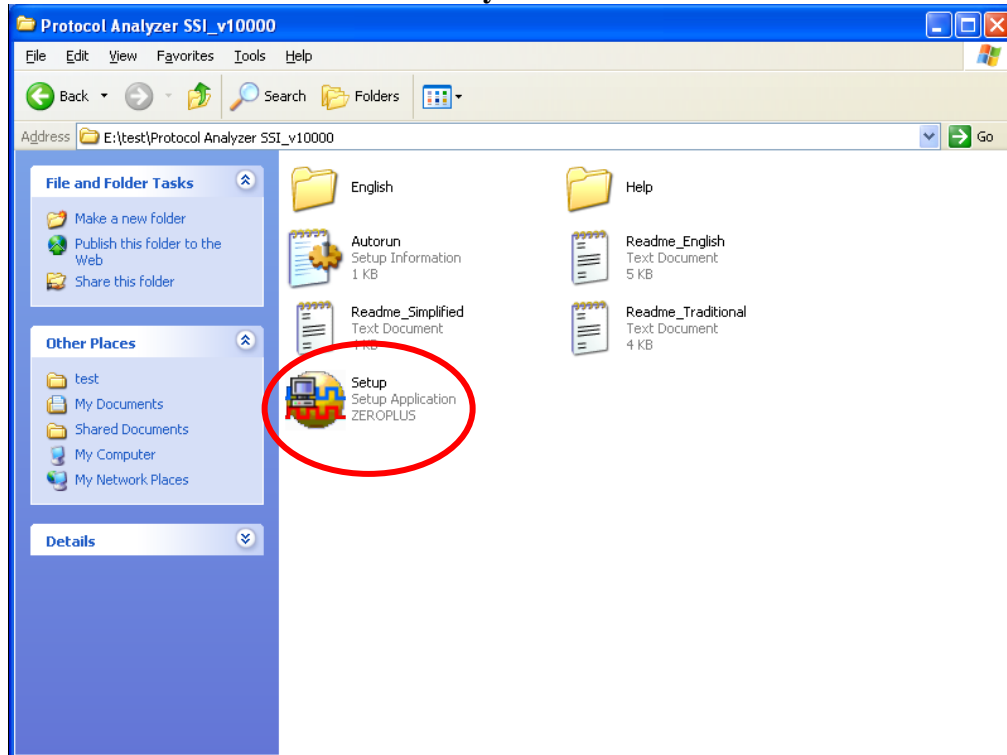


1 Software Installation

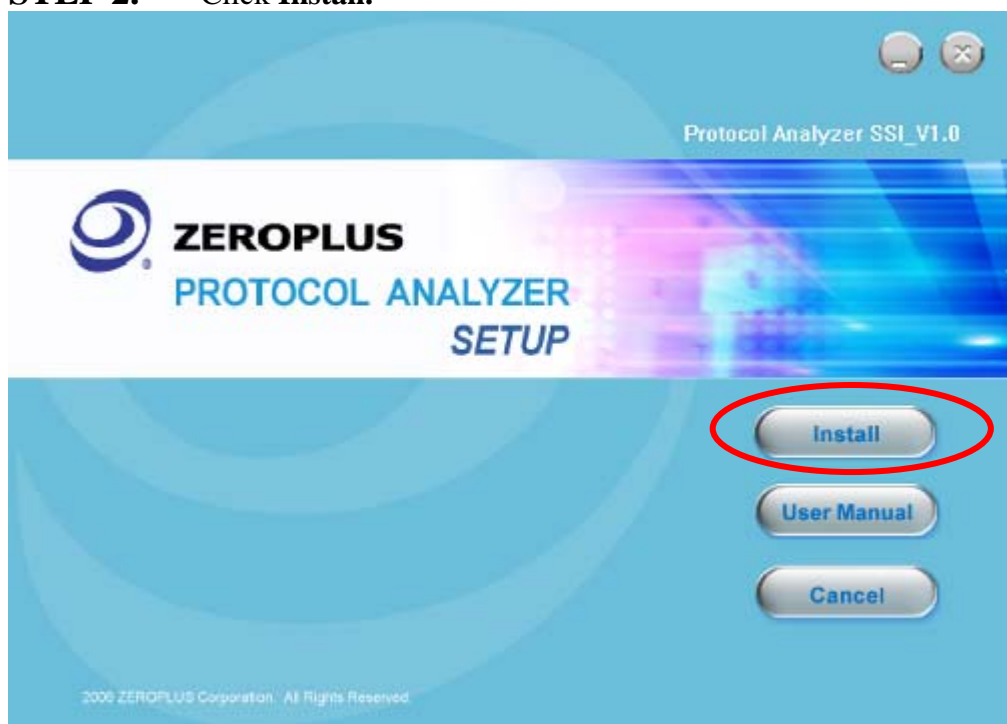
Please install the software as the following steps:

- ※ Remark: 1. The installation steps for all protocol analyzers are the same; you can complete the installation by following procedures. The following is an example to install protocol analyzer SSI.
- ※ Remark: 2. We won't have additional notice for you, when there is any modification of the module specification. If there is some unconformity caused by the module version upgrade, users should refer to the module software as the standard.

STEP 1. Install Protocol Analyzer Module.

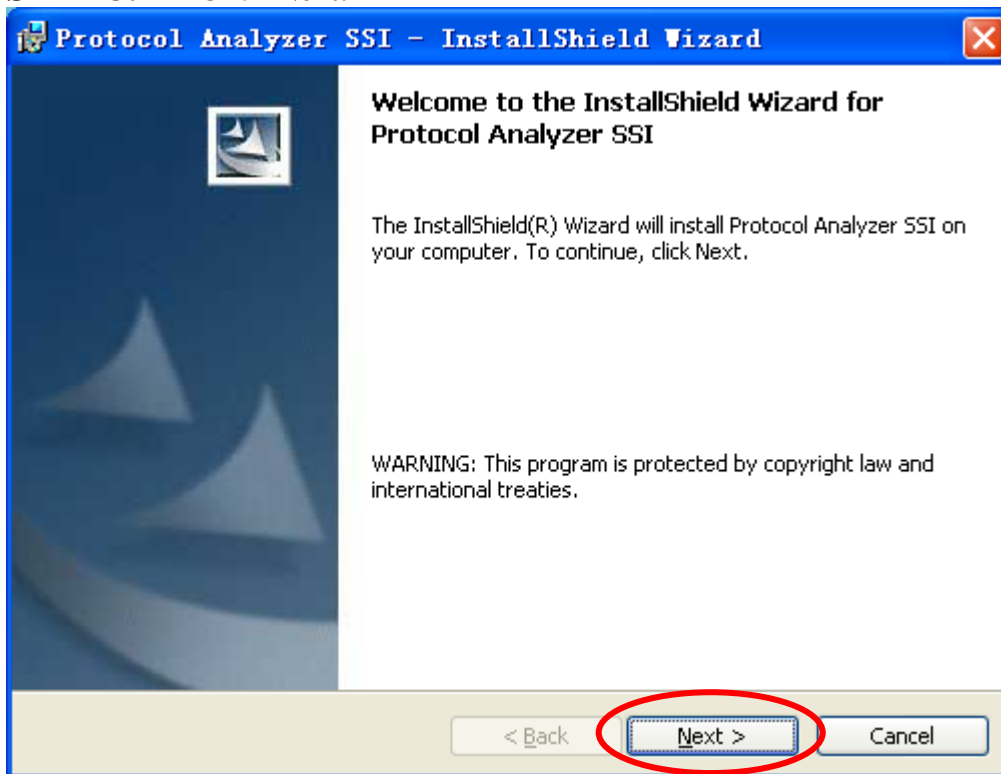


STEP 2. Click Install.

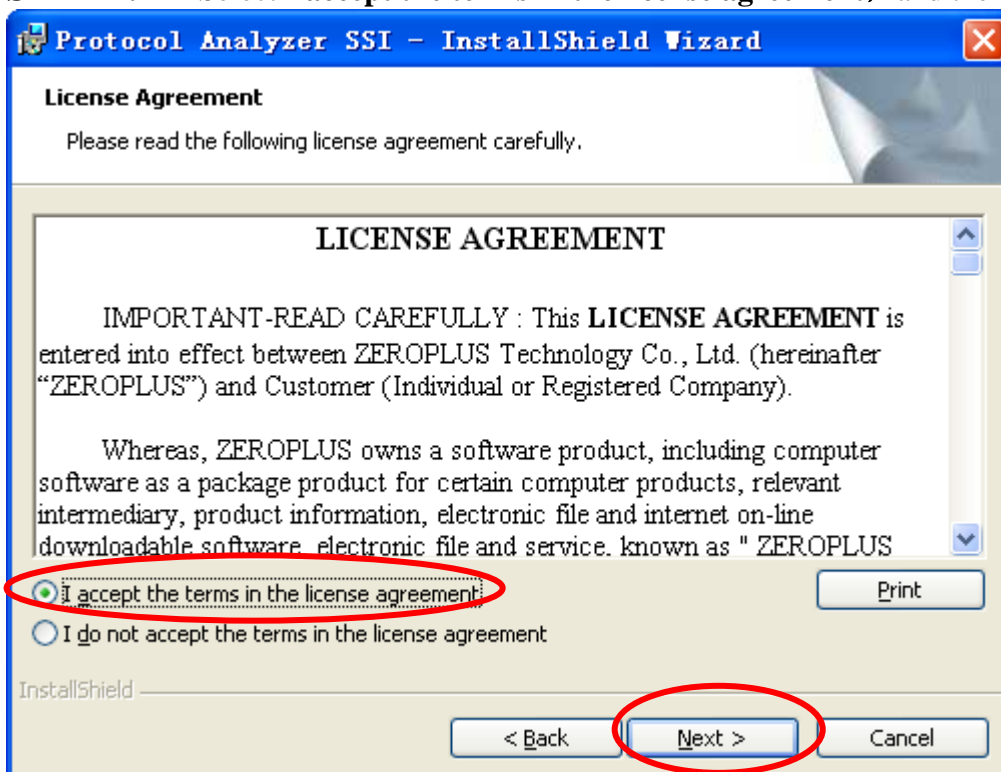




STEP 3. Click Next.



STEP 4. Select **I accept the terms in the license agreement**, and then press Next.





STEP 5. Fill in users' information in the below dialog box and click **Next**.

Protocol Analyzer SSI - InstallShield Wizard

Customer Information

Please enter your information.

User Name:
sunshine

Organization:
zeroplus

Install this application for:

Anyone who uses this computer (all users)

Only for me (微软用户)

InstallShield

< Back **Next >** Cancel


STEP 6. At first, select **Complete** and then click **Next**.


Protocol Analyzer SSI - InstallShield Wizard

Setup Type

Choose the setup type that best suits your needs.

Please select a setup type.

Complete
 All program features will be installed. (Requires the most disk space.)

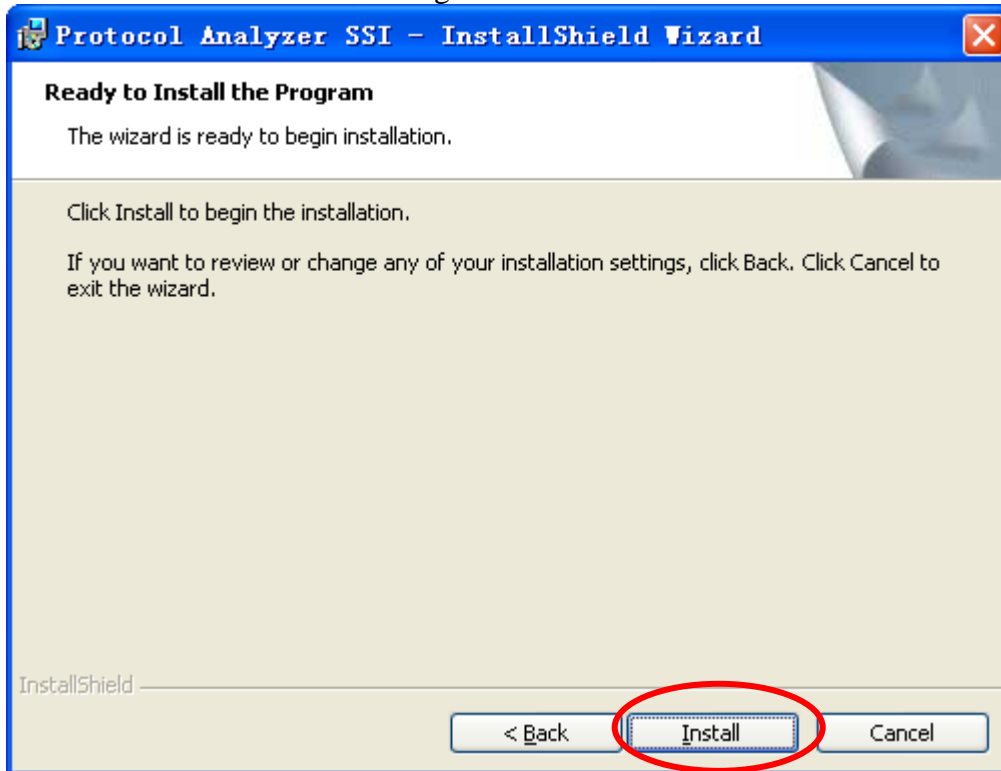
Custom
 Choose which program features you want installed and where they will be installed. Recommended for advanced users.

InstallShield

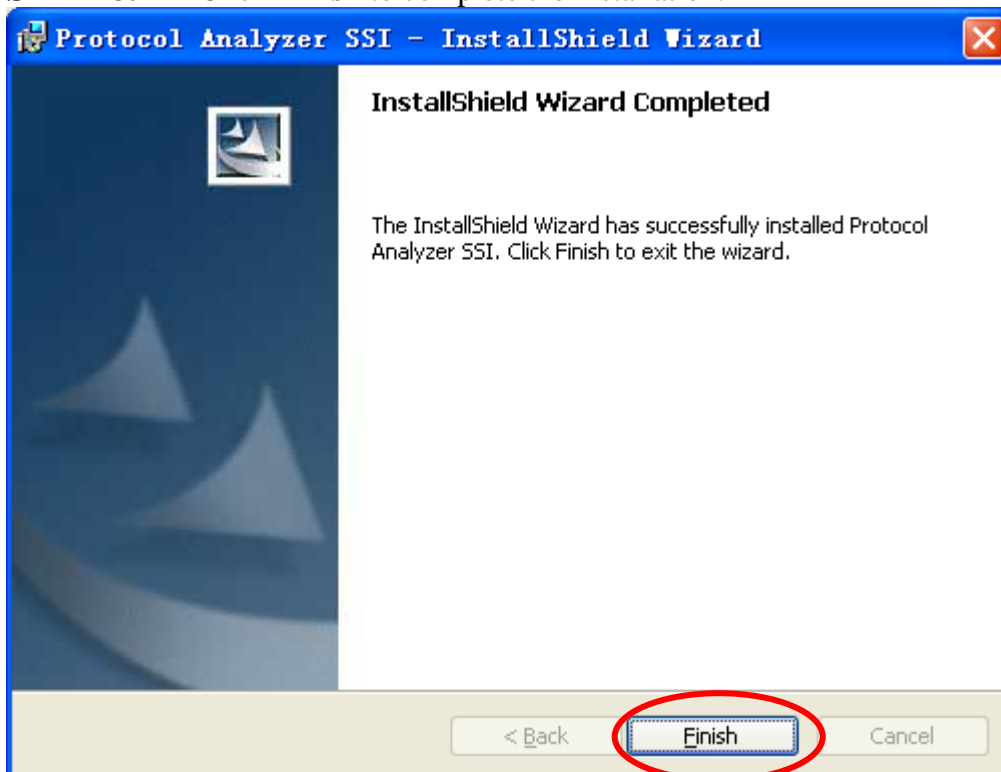
< Back **Next >** Cancel



STEP 7. Click **Install** to begin the installation.



STEP 8. Click **Finish** to complete the installation.

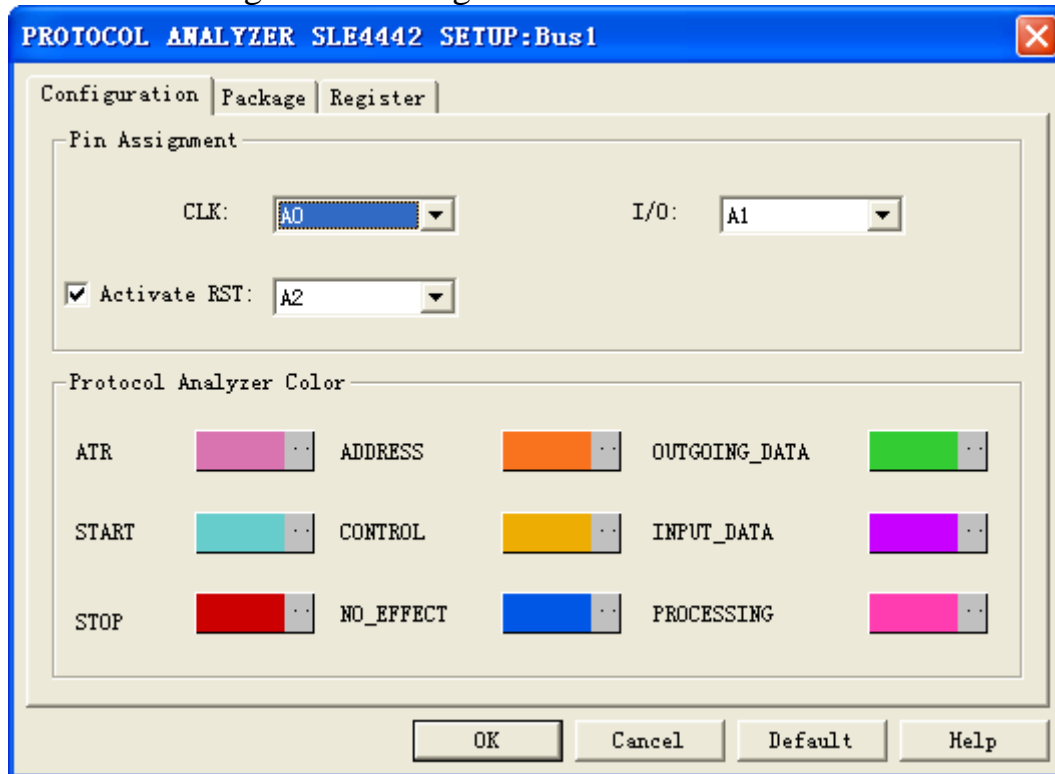




2 User Interface

Please refer to the below images to select options of setting **SLE4442 MODULE**.

SLE4442 Configuration dialog box



Mode Selection:

There are two modes for SLE4442: one mode is activating RST, and the other is not activating RST.

Pin Assignment:

Selection of Protocol Analyzer SLE4442 channels:

1. CLK is the clock signal line, and its default is A0.
2. I/O is the data signal line, and its default is A1.
3. RST is the control signal line, and its default is A2.

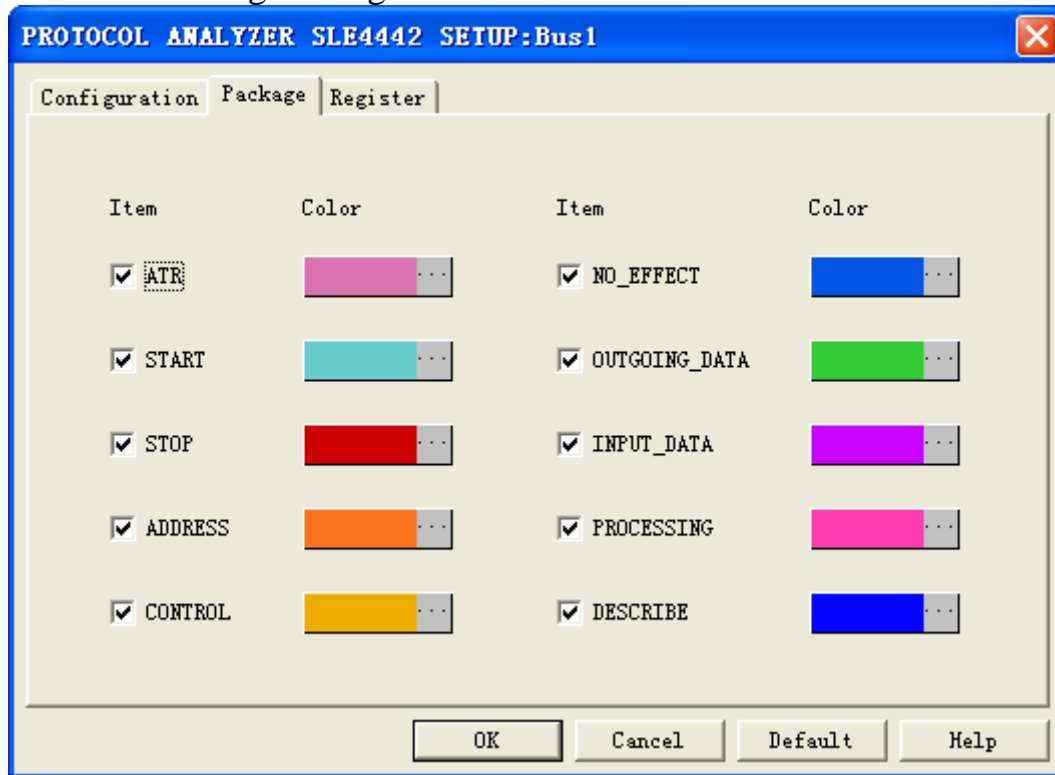
When the RST is activated, the decoding is the 3-line mode, and the value of I/O is read as the CLK is Rising Edge. When the RST is not activated, the decoding is 2-line mode, and the default of RST is Low; the value of I/O is also read as the CLK is Rising Edge.

Protocol Analyzer Color:

The color of the protocol analyzer can be varied by users.

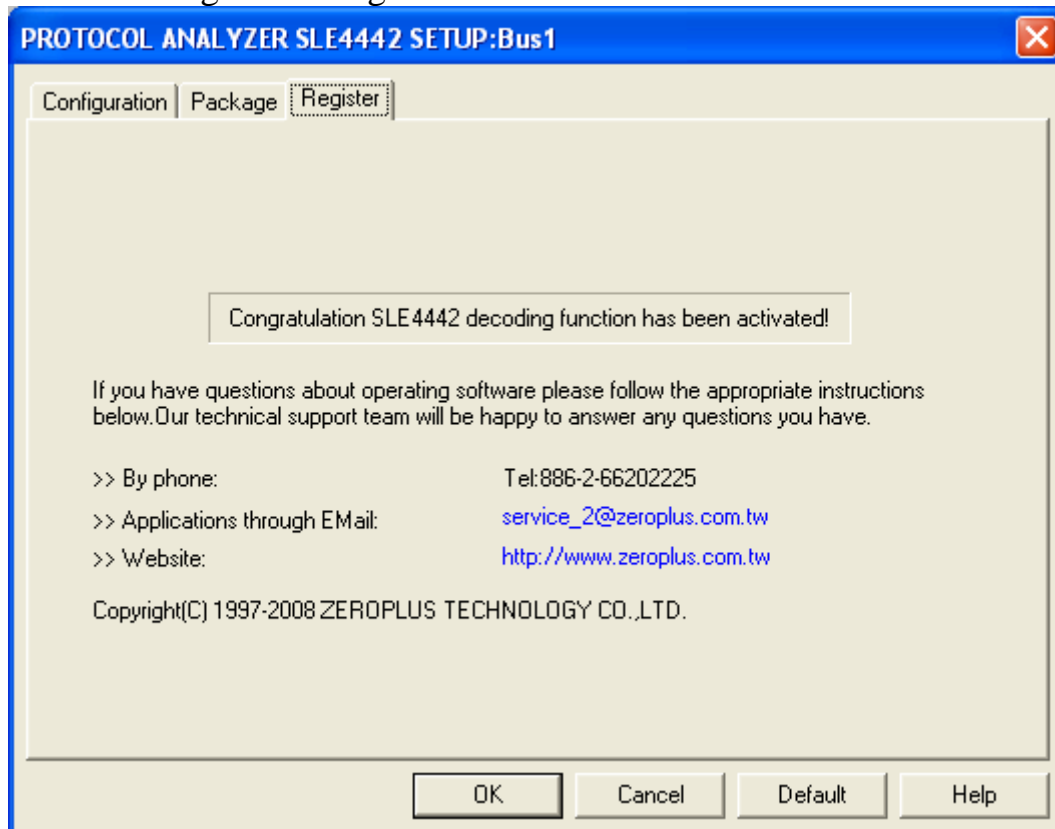


SLE4442 Package dialog box



In the package part, users can vary the displaying items and the package color.

SLE4442 Register dialog box

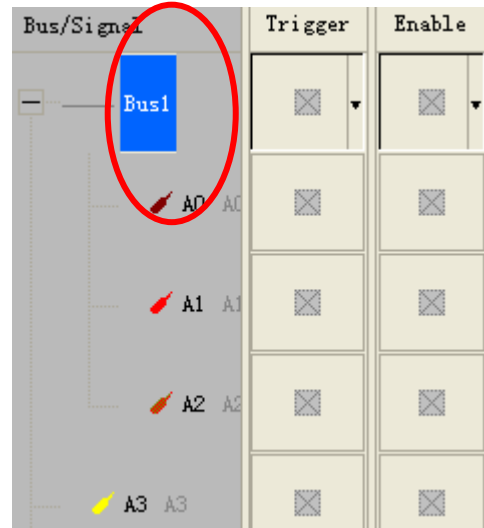
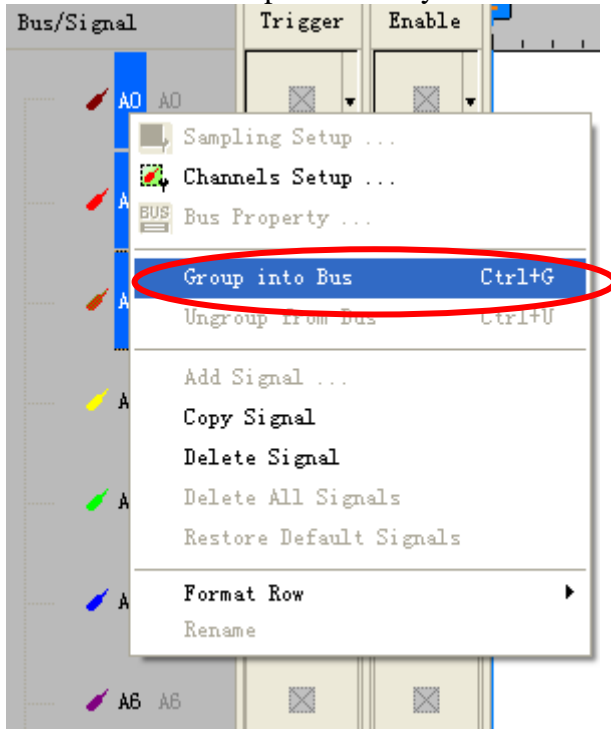


There is ZeroPlus company information. If you have any questions about software operations, you can contact ZeroPlus by Telephone or Email.

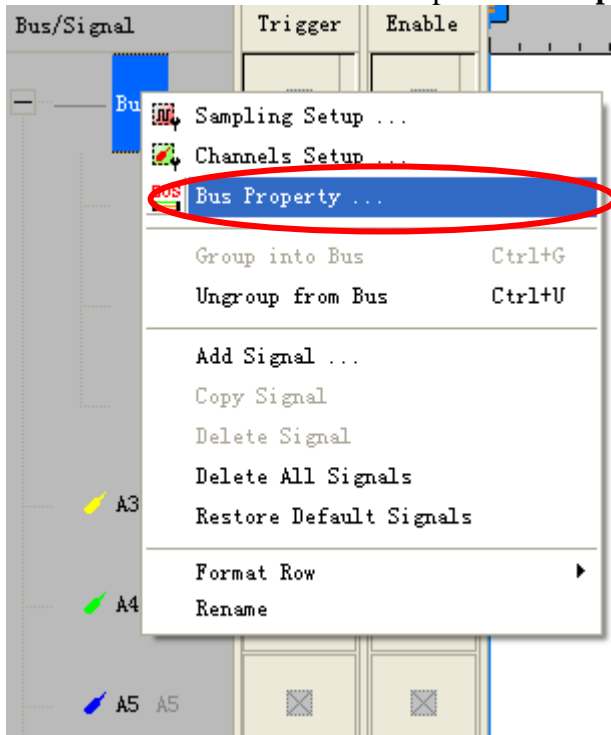


3 Operating Instructions

STEP 1. Group the unanalyzed channels into **Bus1** by pressing the **Right Key** on the mouse.

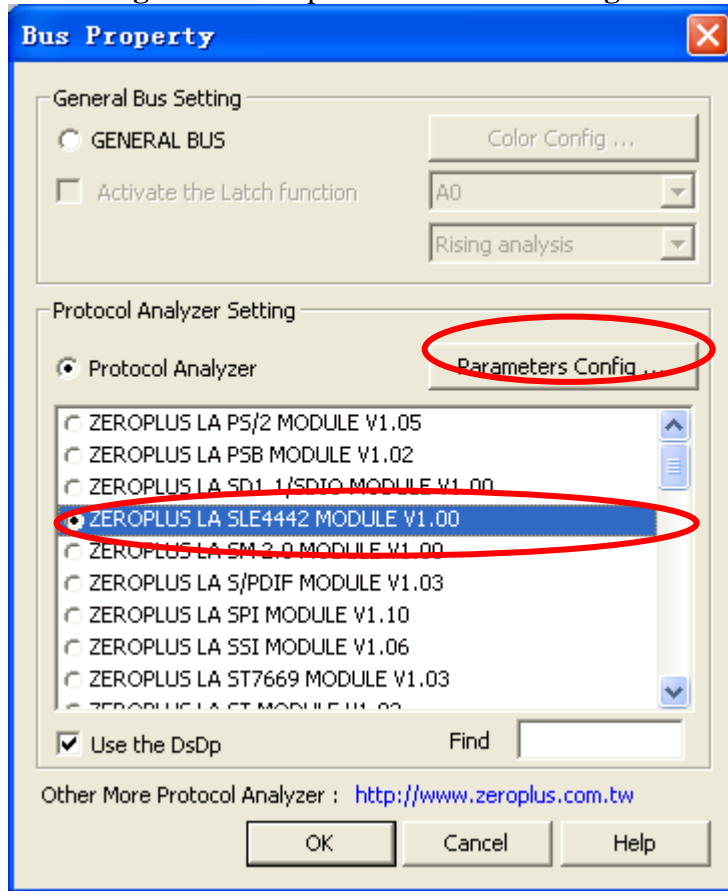


STEP 2. Select **Bus1**, then press **Right key** on the mouse to list menu, then press **Bus Property** or **Bus bar** on the toolbar to open **Bus Property** dialog box.

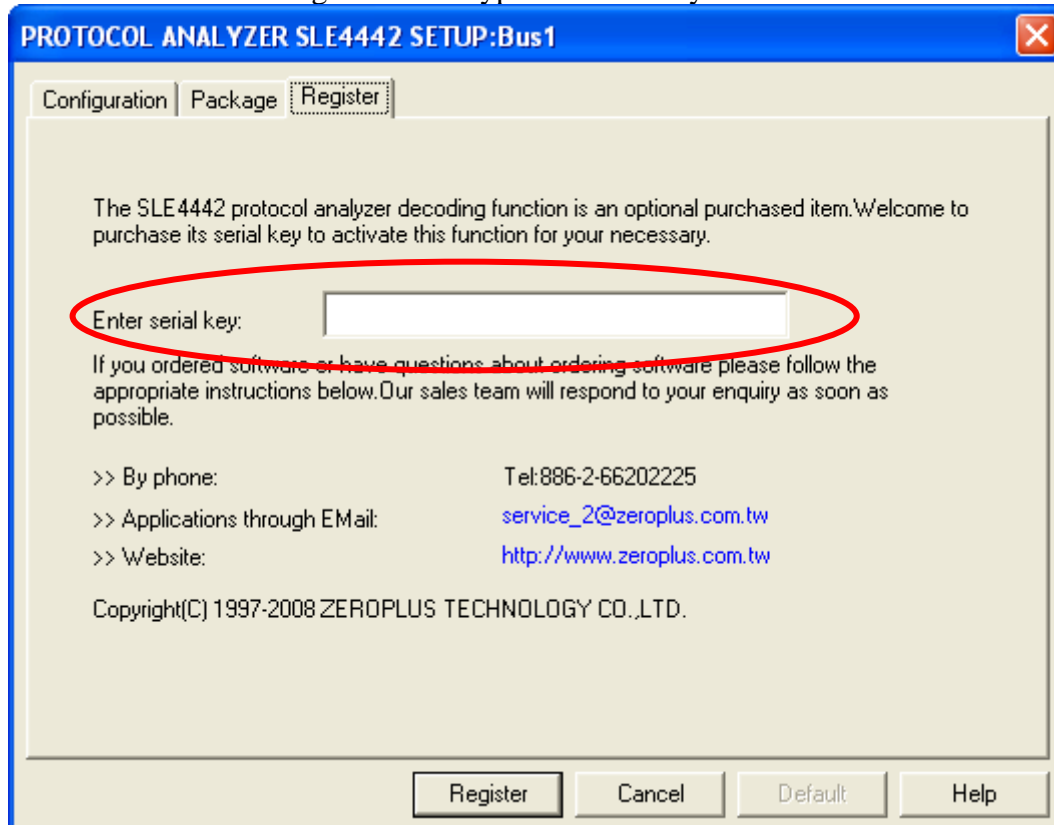




STEP 3. For Protocol Analyzer SLE4442 Parameters Configuration, select Protocol Analyzer, and then choose **ZEROPLUS LA SLE4442 MODULE V1.00**, next click **Parameters Configuration** to open **Parameters Configuration** dialog box.

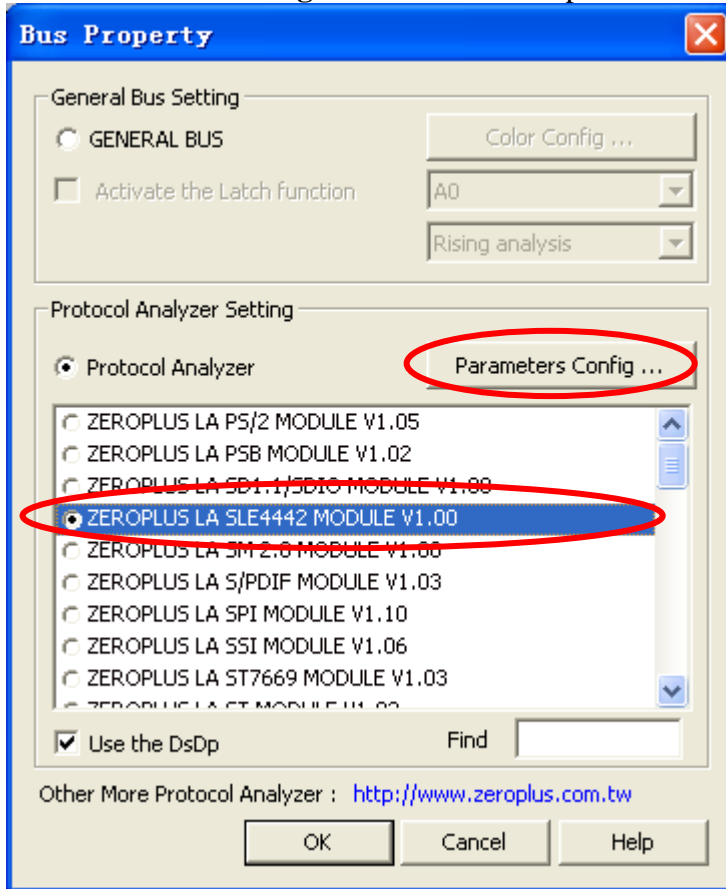


STEP 4. Press Register tab to type the serial key number of **SLE4442**. Then, press **Register**.

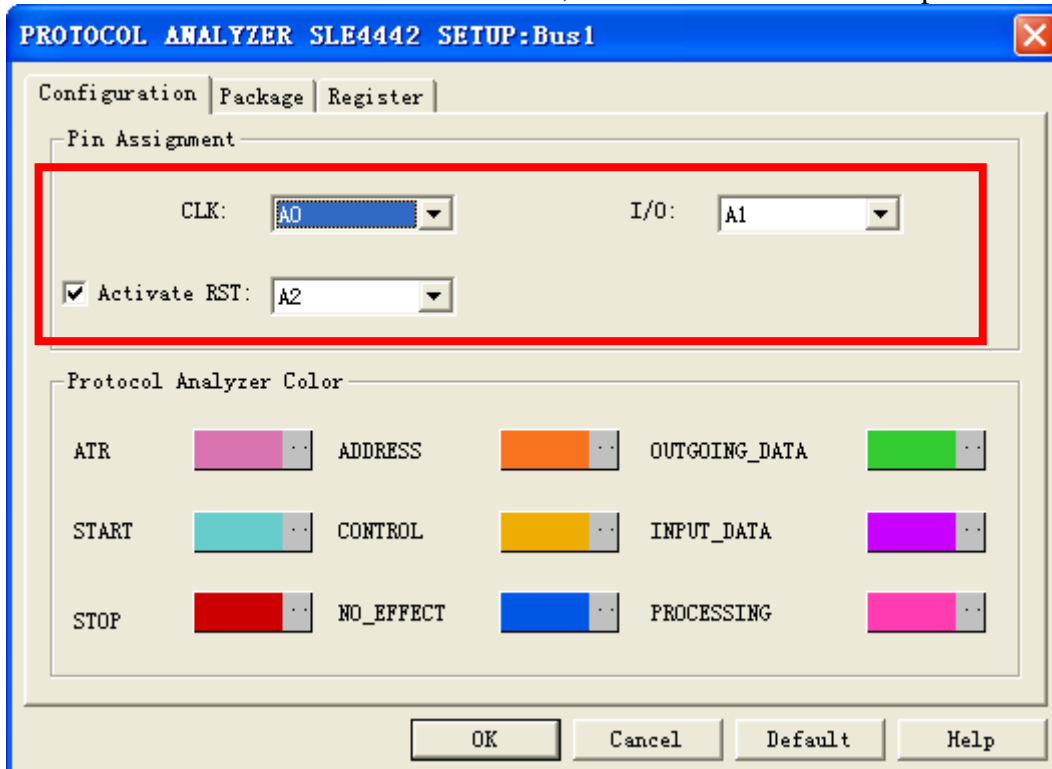




STEP 5. After completing **Register**, come back to the **Bus Property** dialog box, and then click **Parameters Configuration** to start the protocol analyzer SLE4442 setup.

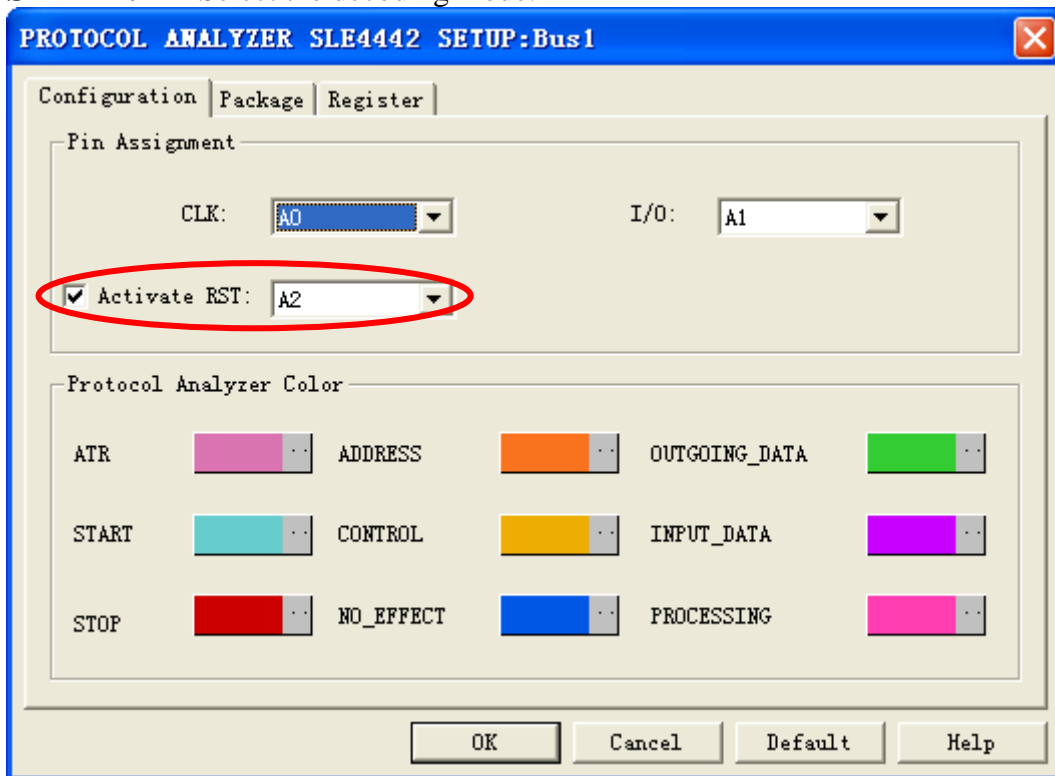


STEP 6. Select the channels for CLK, I/O and RST from their dropdown menus.

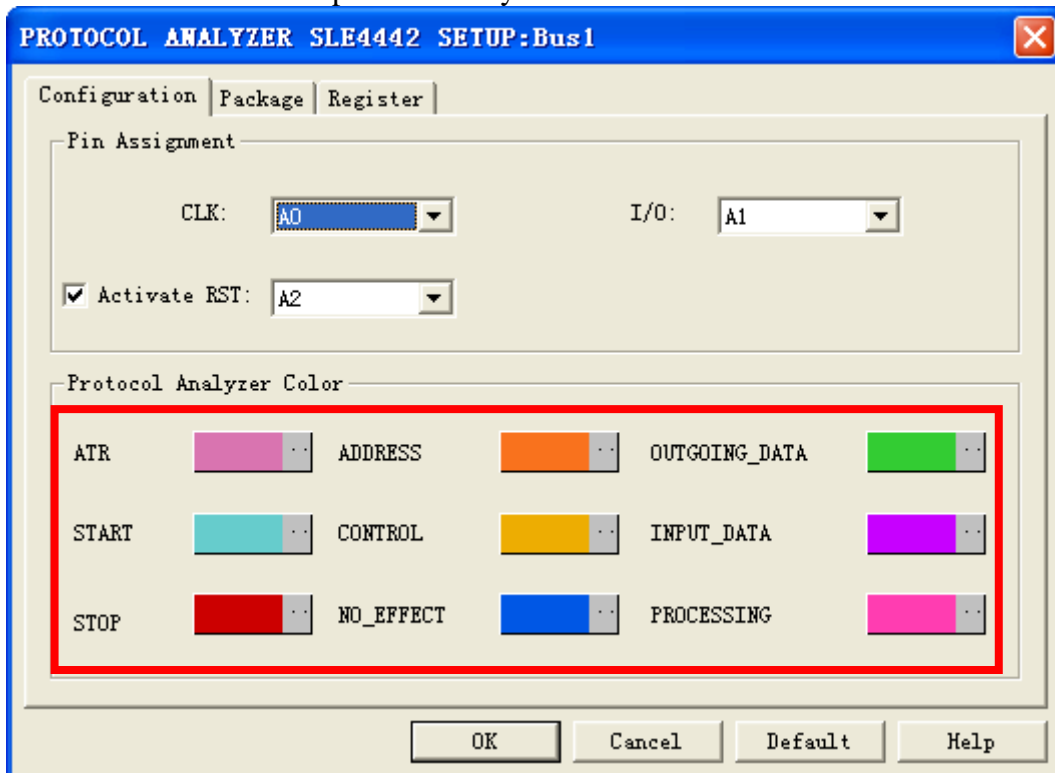




STEP 7. Select the decoding mode.



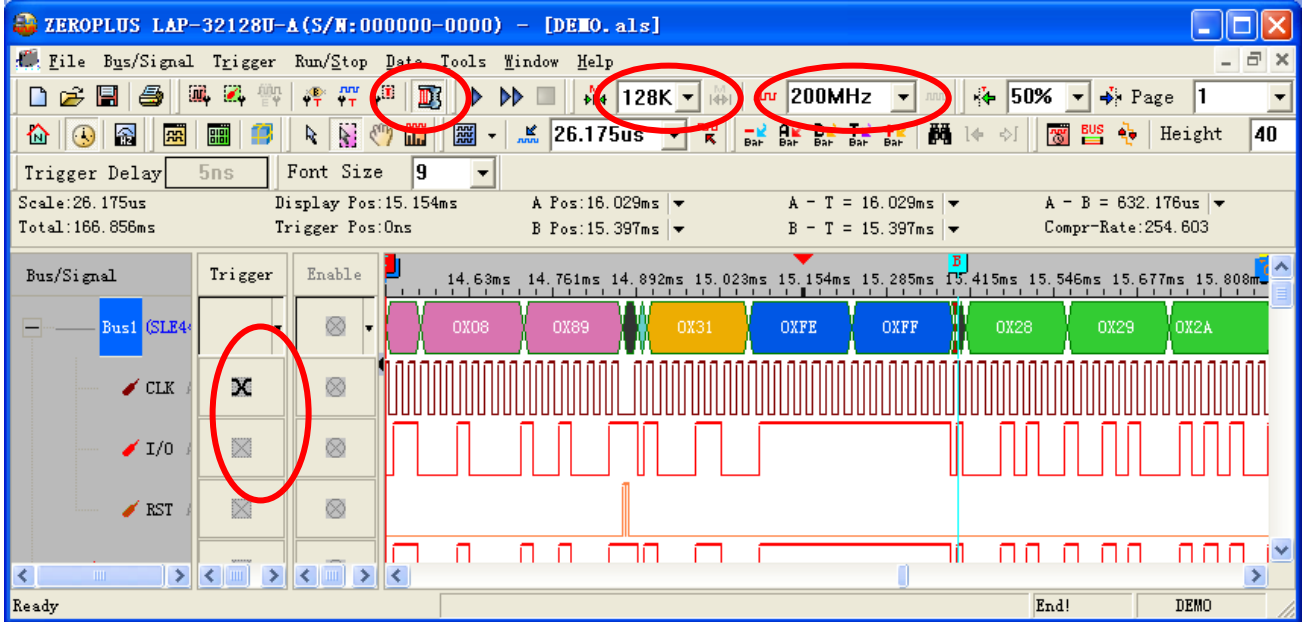
STEP 8. Select the protocol analyzer color.





STEP 9. Following pictures show the completion of the protocol analyzer decoding and the package list. The Trigger condition is set as Either Edge; the Memory depth is 128K; the Sampling frequency is 200MHz; the compression function is activated.

Protocol Analyzer Decoding



Package List

