



孕龍科技股份有限公司
ZEROPLUS TECHNOLOGY CO.,LTD

Instrument Business Department

PCM Specification

Version : V1.0

Content

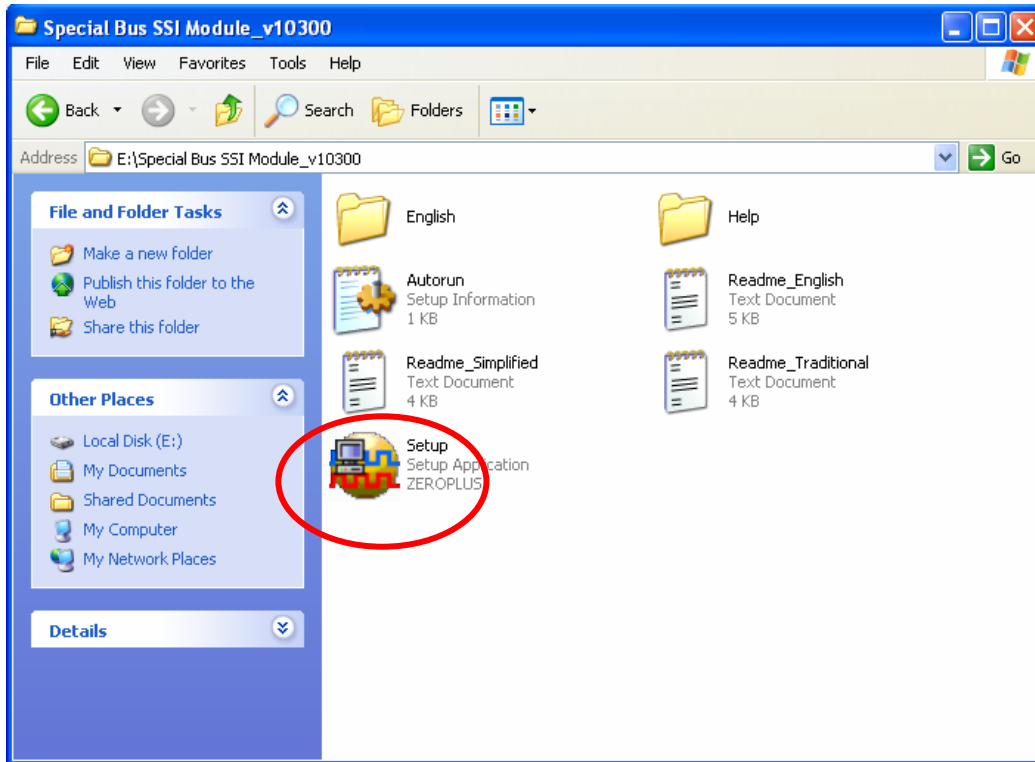
1	Software Installation.....	3
2	User Interface	7
3	Operating Instructions	9

1 Software Installation

Please follow below steps to install the software:

※ **Remarks:** The installation steps for all buses are the same; you can complete installation by following procedures. Below is an example on how to install SSI bus.

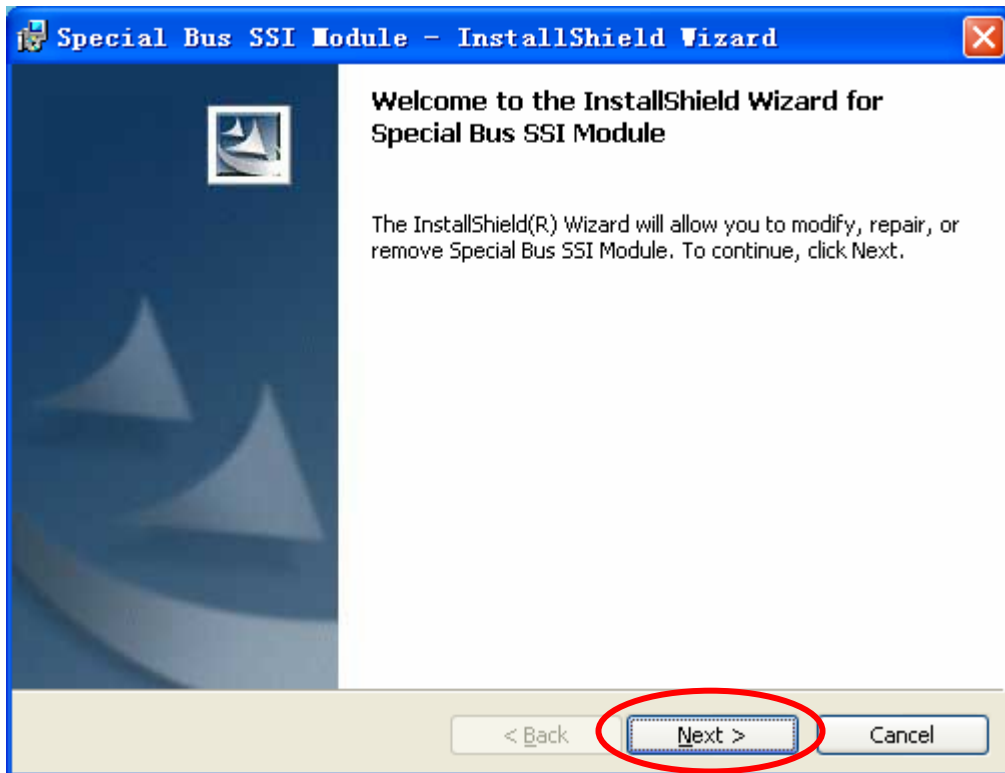
STEP 1. Install Bus Module



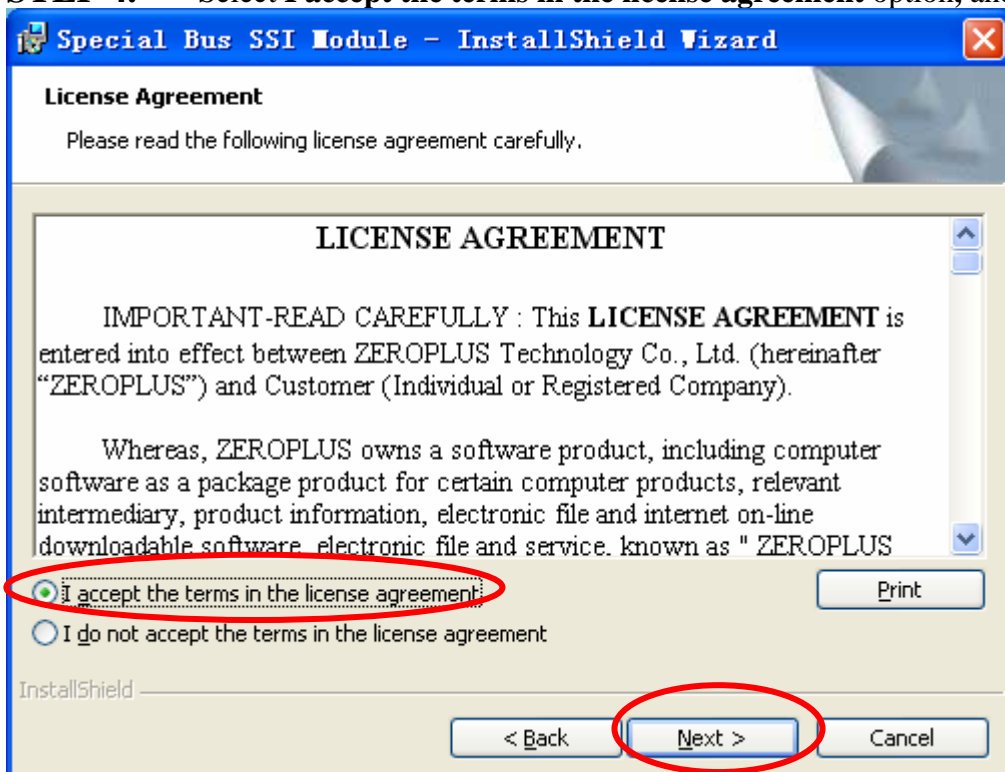
STEP 2. Click Install.



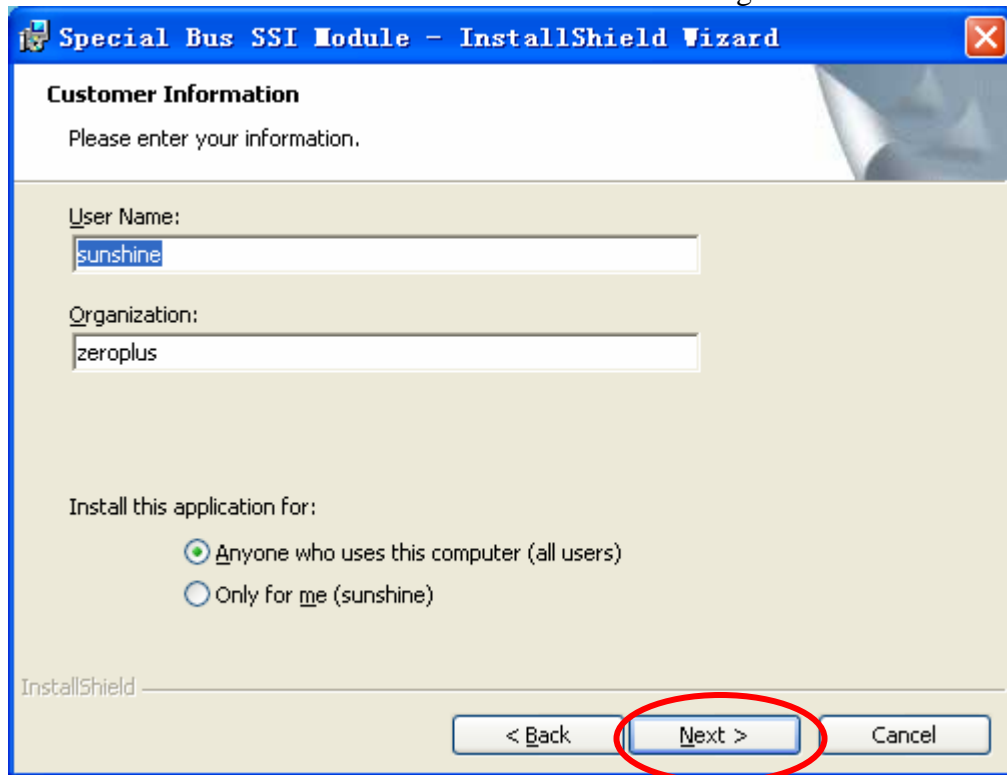
STEP 3. Click Next.



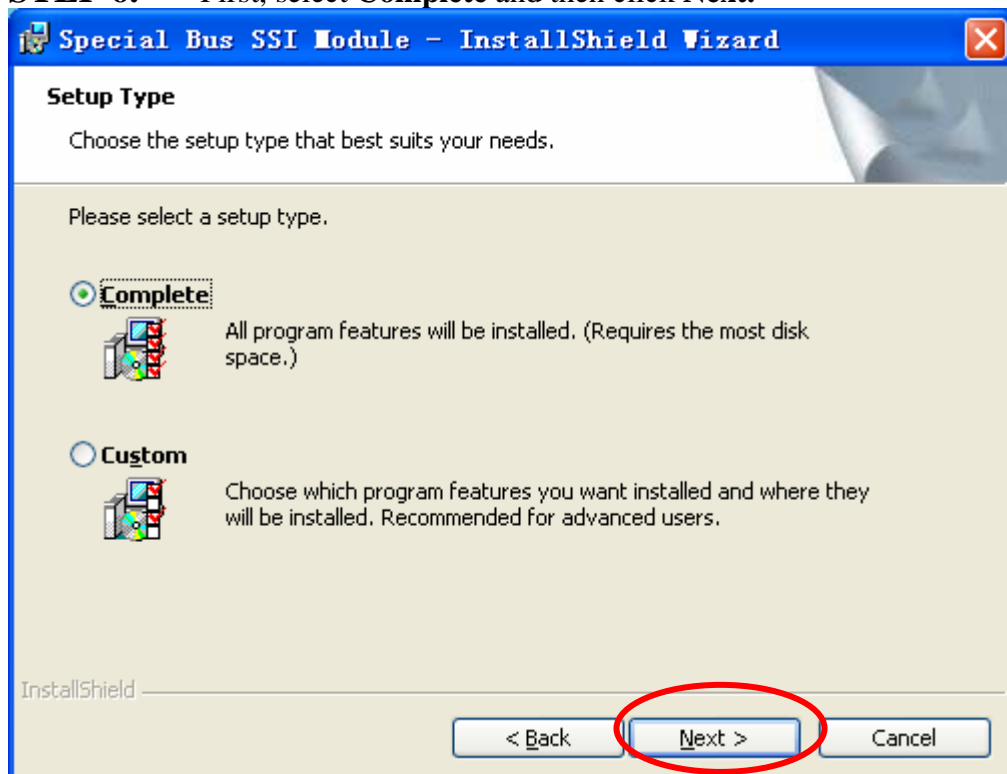
STEP 4. Select **I accept the terms in the license agreement** option, and then press Next.



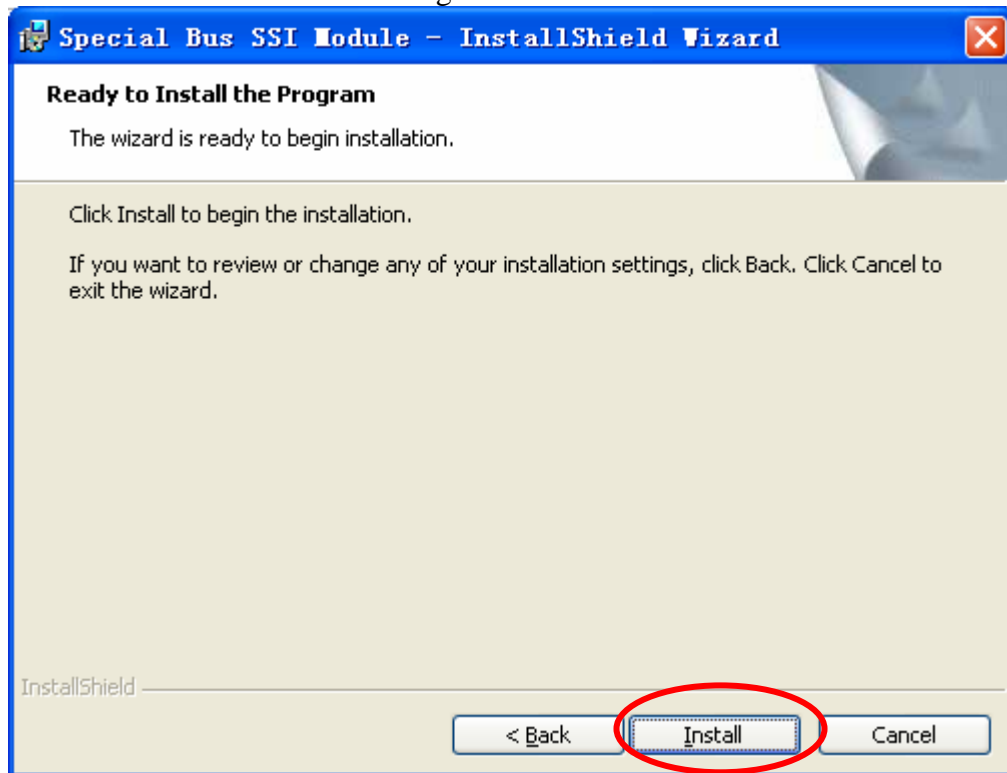
STEP 5. Fill in user information in the below dialog box and then click **Next**.



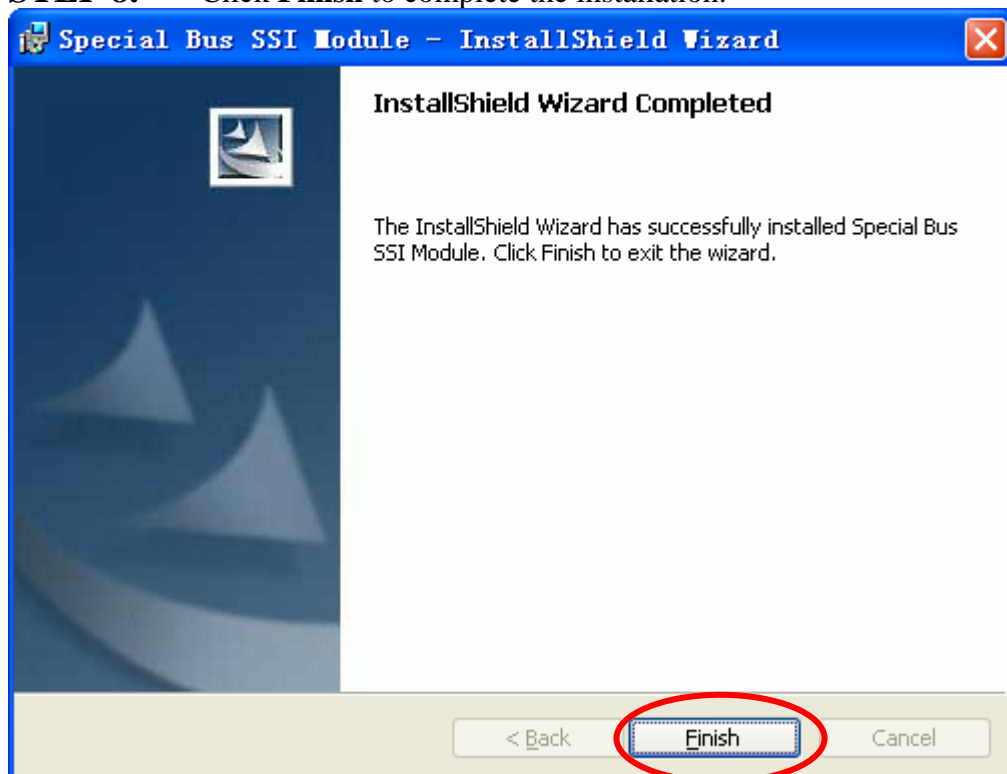
STEP 6. First, select **Complete** and then click **Next**.



STEP 7. Click **Install** to begin the installation.



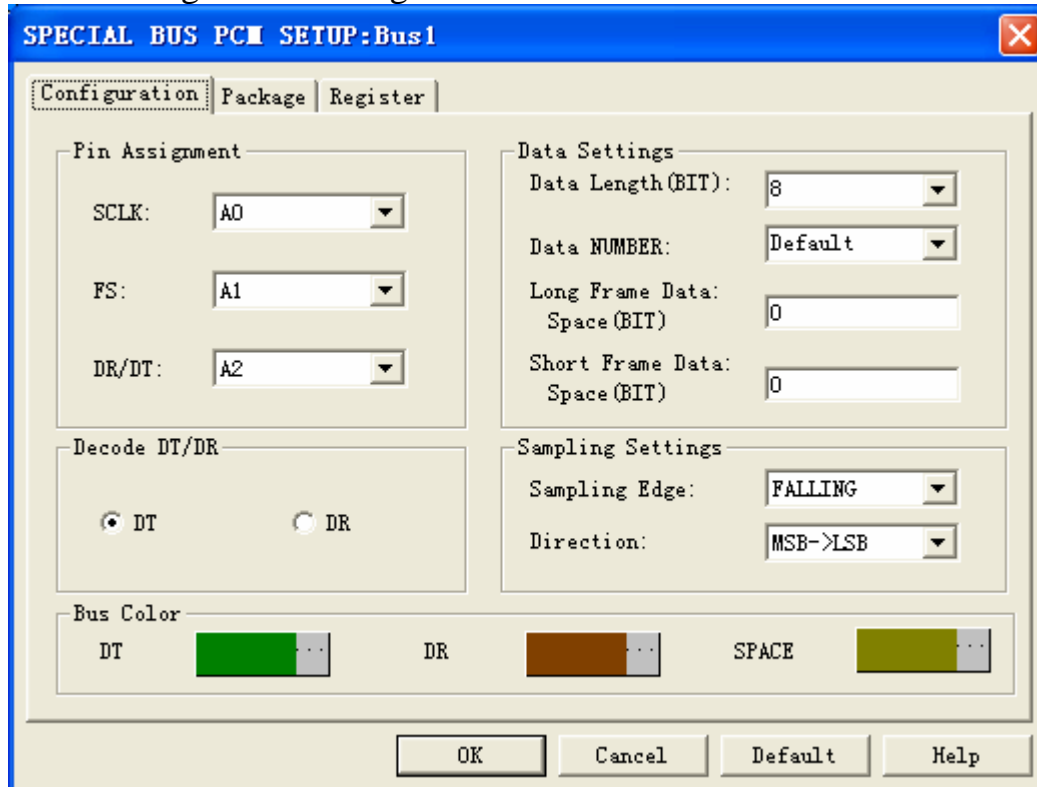
STEP 8. Click **Finish** to complete the installation.



2 User Interface

In the configuration dialog box, please refer to the below images to select options of setting **PCM MODULE**.

PCM Configuration dialog box



Pin Assignment Channels:

1. SCLK is the synchronous clock signal, its default is A0
2. FS is the frame synchronous signal, its default is A1.
3. DR/DT is the data receive /data transport signal, the default is A2.

Decode DT/DR: Signal transports under DT mode, and signal receives under DR mode.

Data Settings:

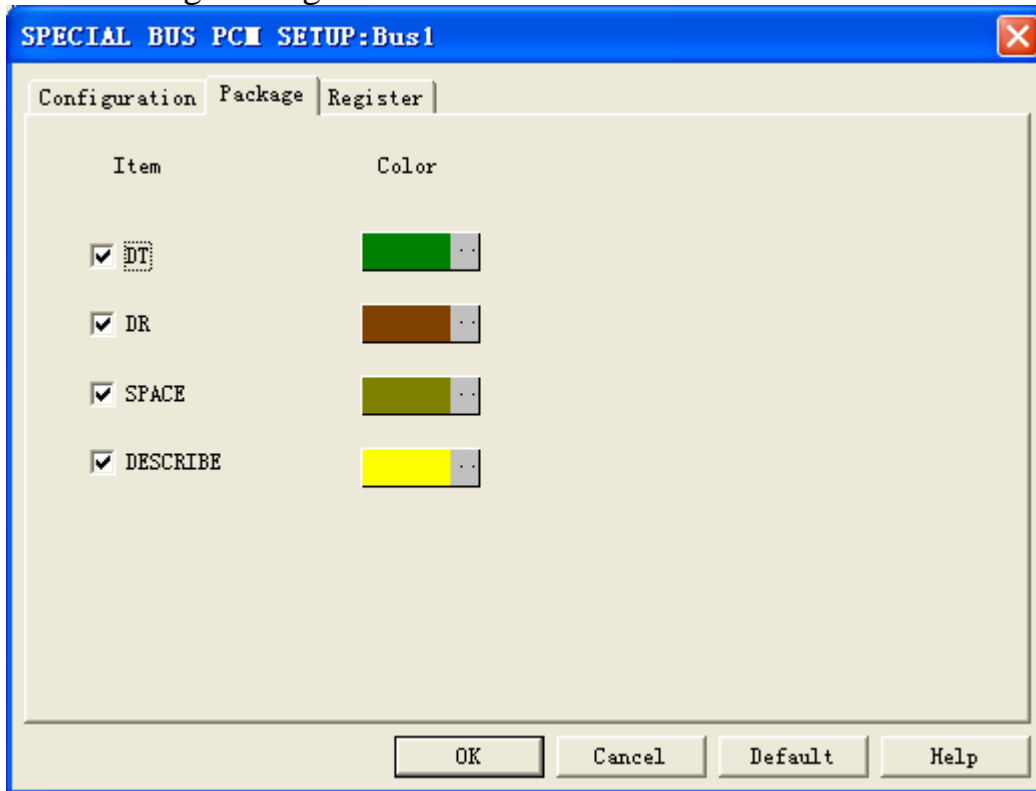
1. Data Length: The length is no more than 56bit.
2. Data Number: The count can not exceed 128bety.
3. Long Frame Data Space: The most data Space count is 255bit.
4. Short Frame Data Space :The most data Space count is 128bety.

Sampling settings:

1. Sampling Edge Settings: Sampling position is set at CLOCK rising edge or falling edge.
2. Data Direction: There are two options : MSB->LSB and LSB->MSB.

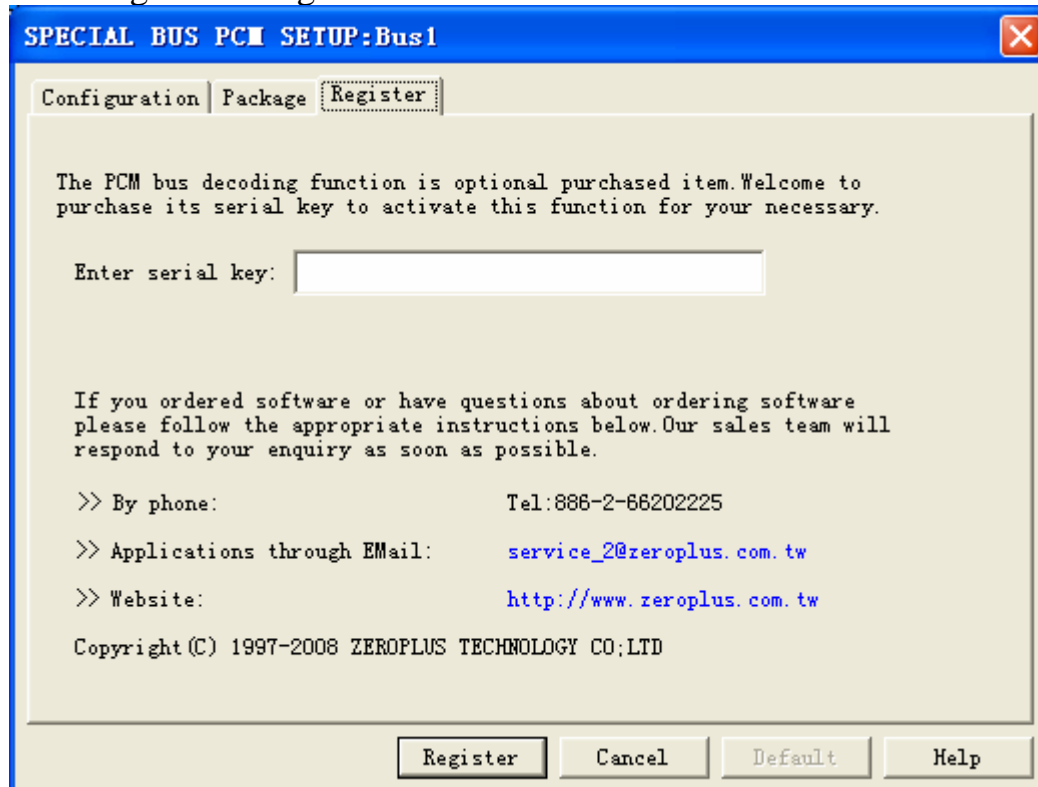
Bus Color: Set up the color for bus package.

PCM Package dialog box



In the package dialog box, user can vary the colors of the items.

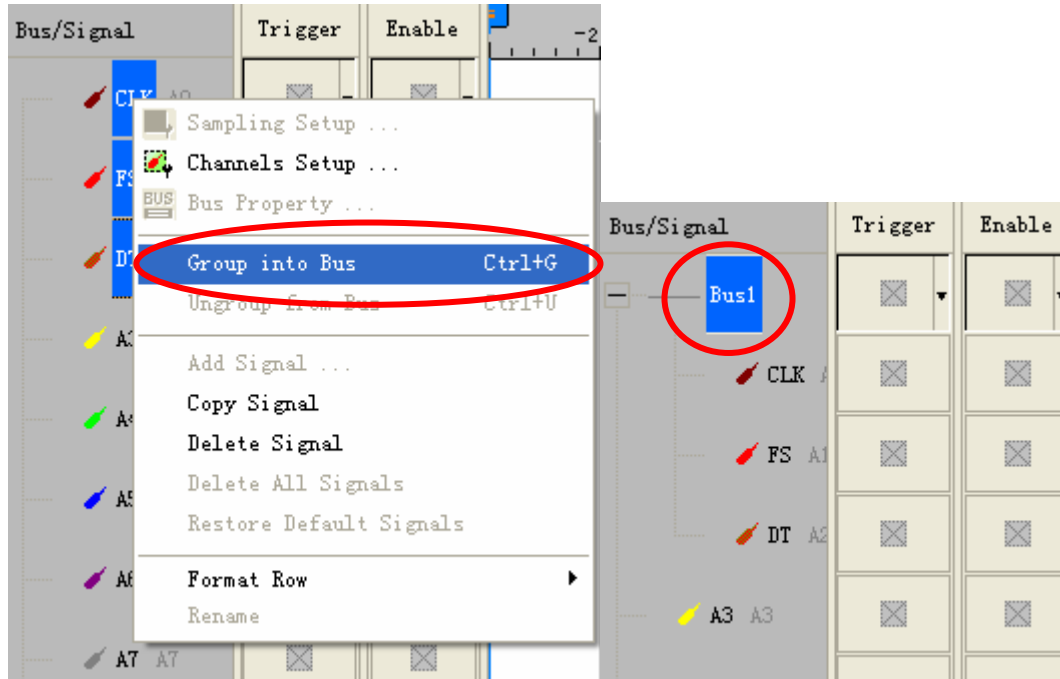
PCM Register dialog box



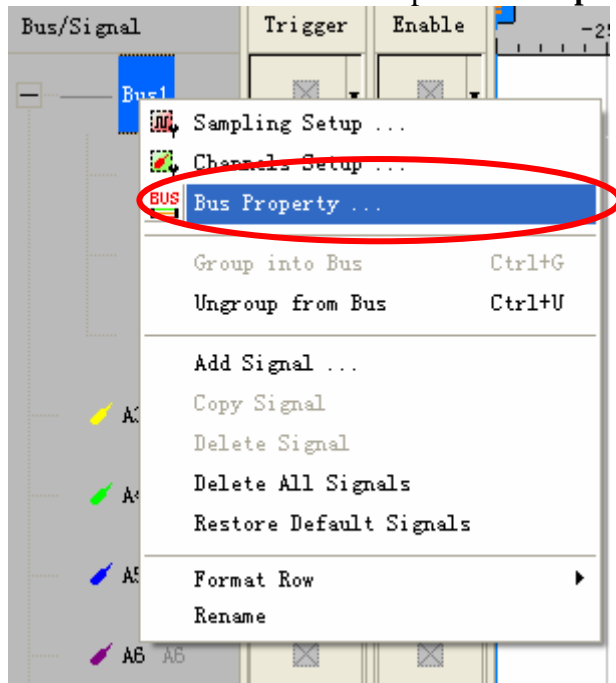
There is written Zeroplus company information. If you have any questions about software operations, you can contact Zeroplus by Telephone or Email.

3 Operating Instructions

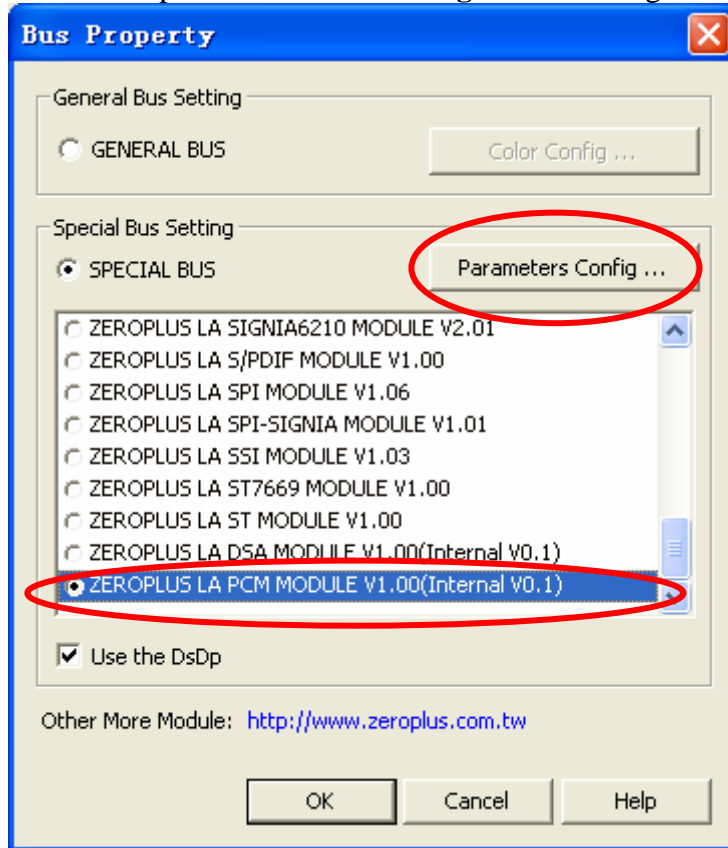
STEP 1. At first, group the unanalyzed channels into **bus1** by pressing the **Right Key** on mouse.



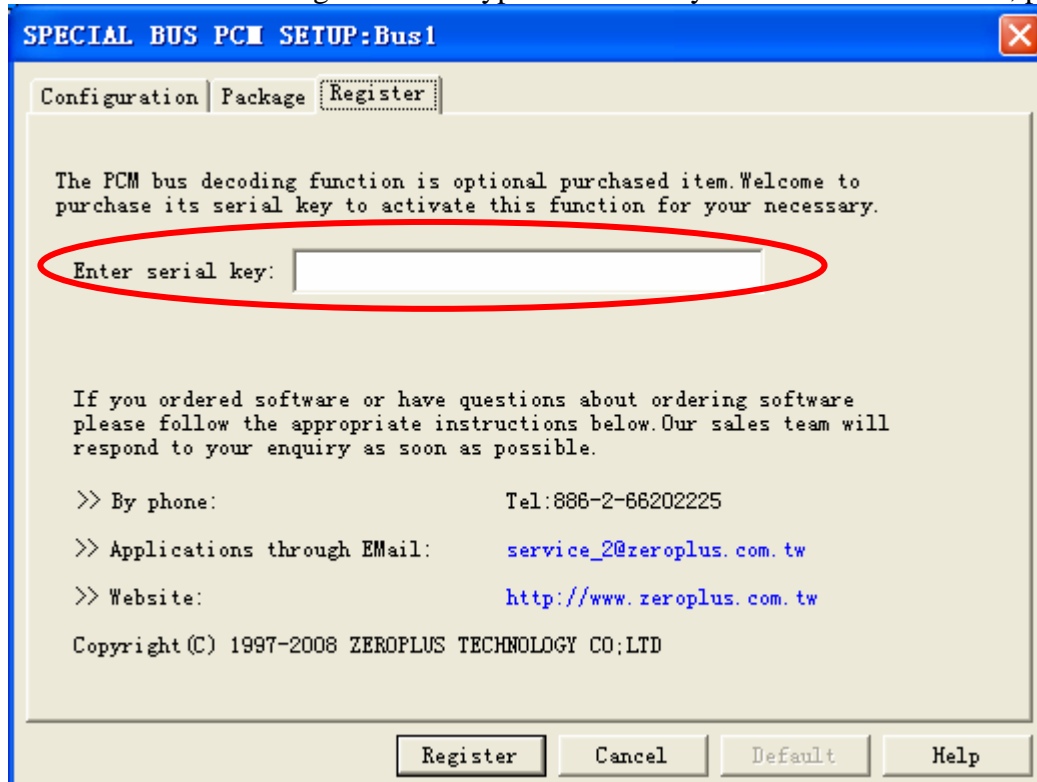
STEP 2. Select **Bus1**, then press **Right key** on mouse to list menu, then press **Bus Property** or **Bus** bar on the toolbar to open **Bus Property** dialog box.



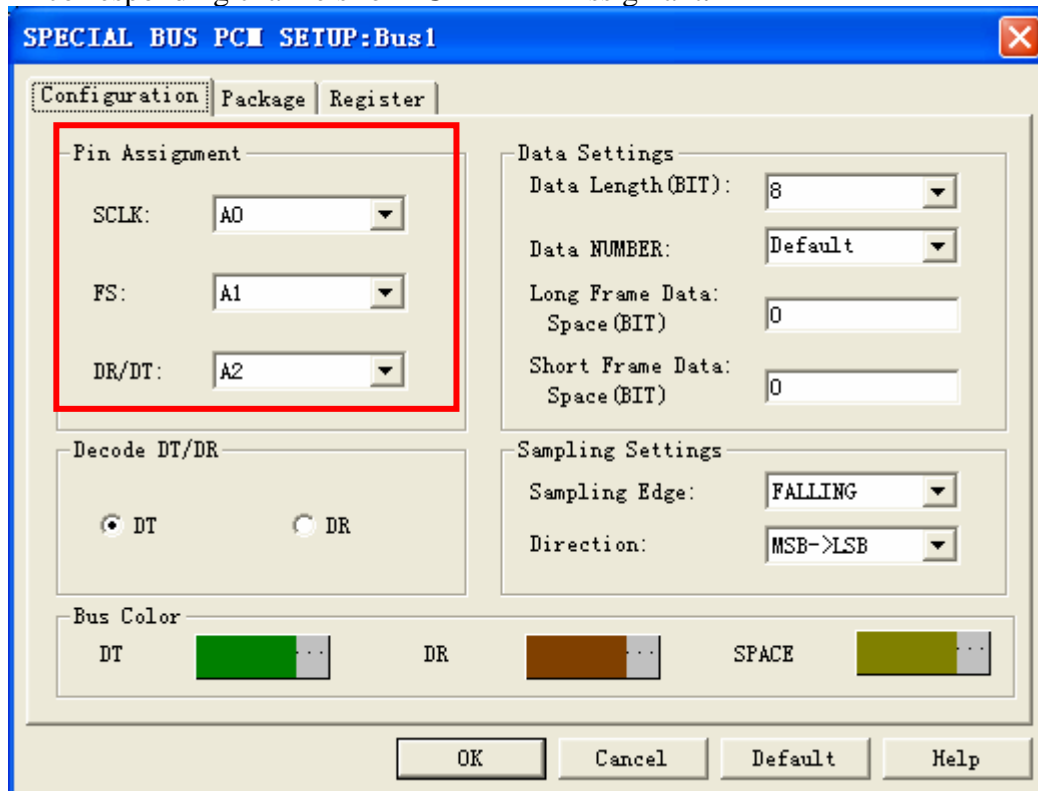
STEP 3. For Special Bus PCM Parameters Configuration, select Special Bus, and then select **ZEROPLUS LA PCM MODULE V1.00(Internal V0.1)**. Next click **Parameters Configuration** to open **Parameters Configuration** dialog box.



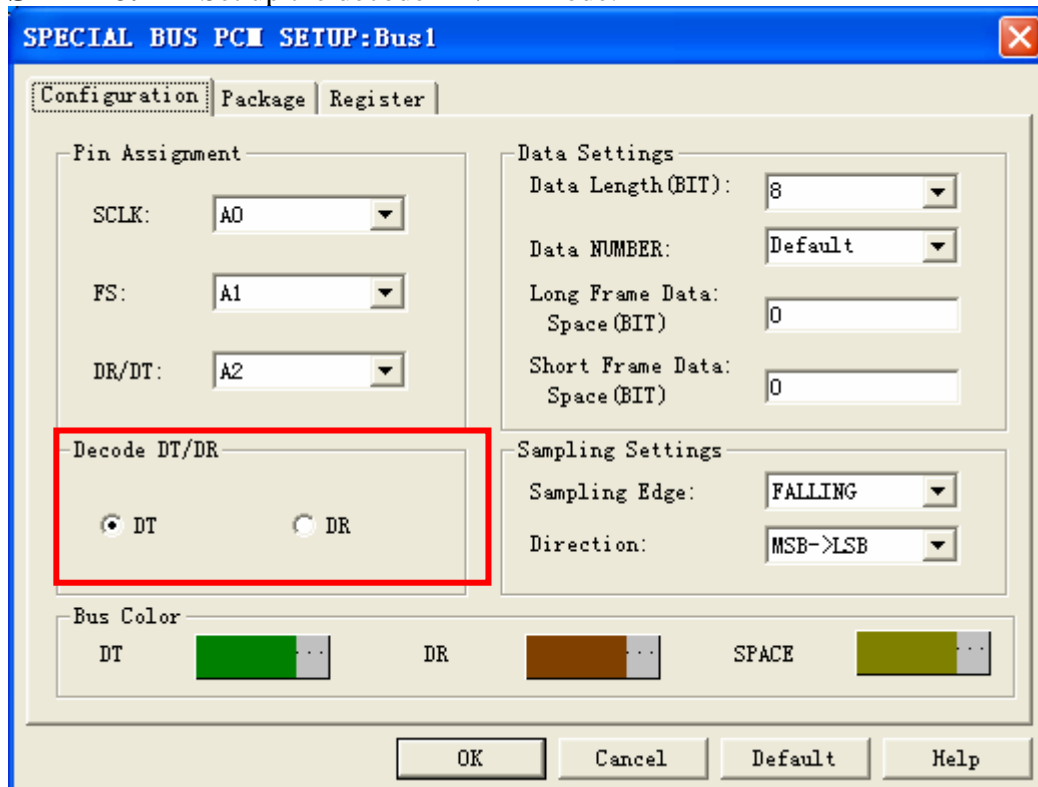
STEP 4. Click Register tab to type the serial key number of PCM .Then, press **Register**.



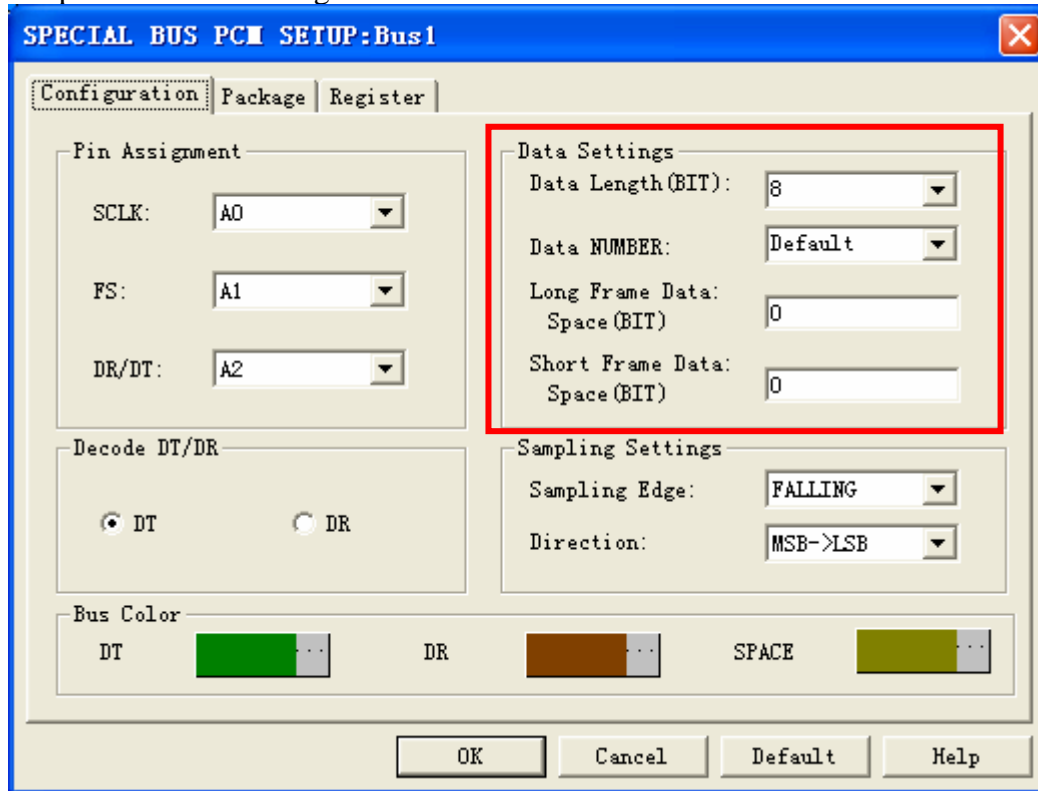
STEP 5. After completing registration, turn to configuration dialog box, select the corresponding channels for PCM in Pin Assignment.



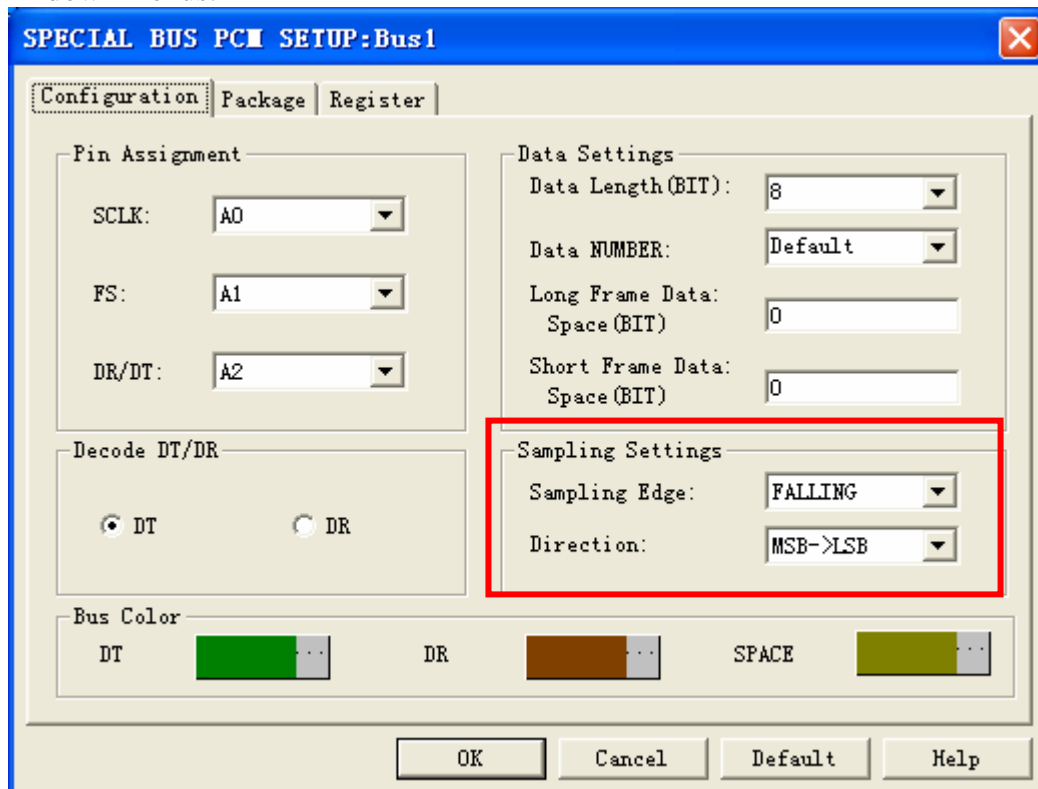
STEP 6. Set up the decode DT/DR mode.



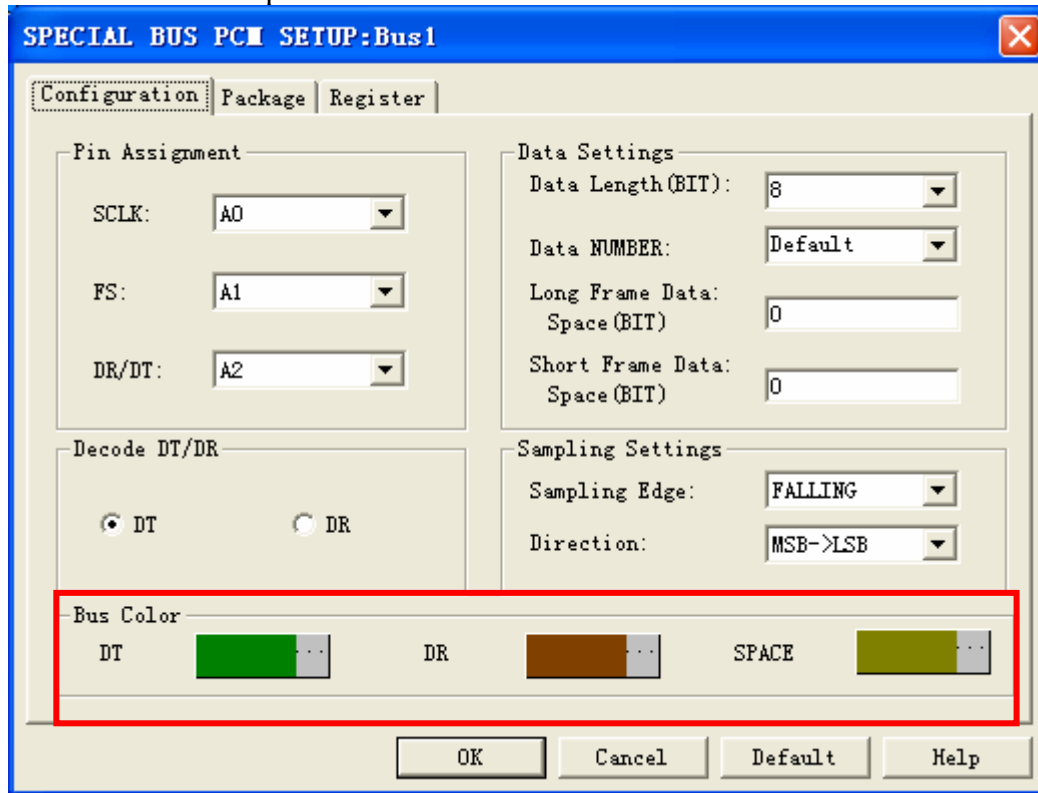
STEP 7. Set up the data length, data number, long frame data space and short frame data space for Data Settings



STEP 8. Sampling Settings: Select the sampling mode and data direction from their drop-down menus.

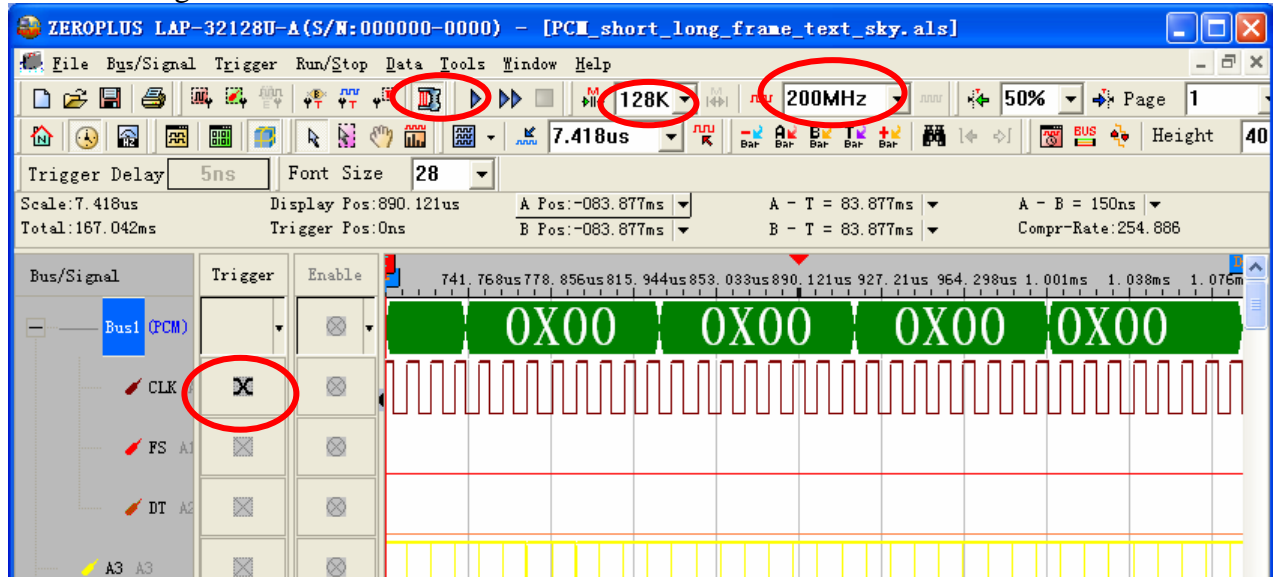


STEP 9. Set up the bus color.



STEP 10. Following pictures show that the completion of the Bus decoding and package list.
 The conditions are set as either edge ,Memory depth is 128K, Sampling frequency is 200MHZ
 The compression mode is activated.

Bus Decoding



Package List

