



孕龍科技股份有限公司
Zeroplus Technology Co., Ltd.

Instrument Business Department

NEC PD6122 Specification

Version: V1.02



Content

1	Software Installation	3
2	User Interface	7
3	Operating Instructions	9

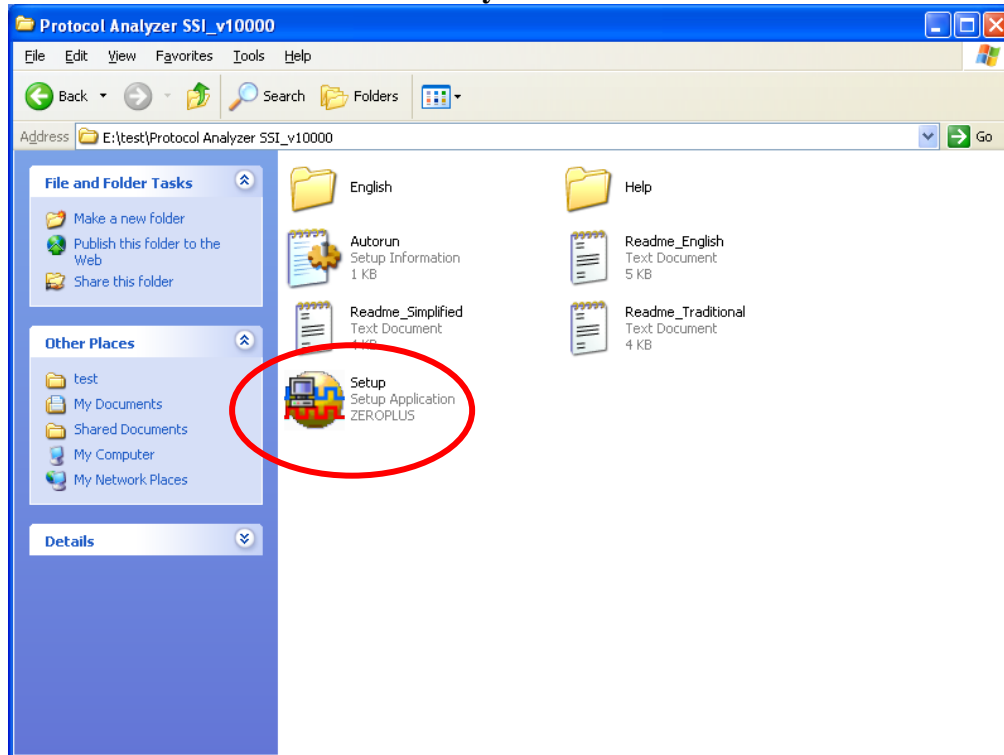


1 Software Installation

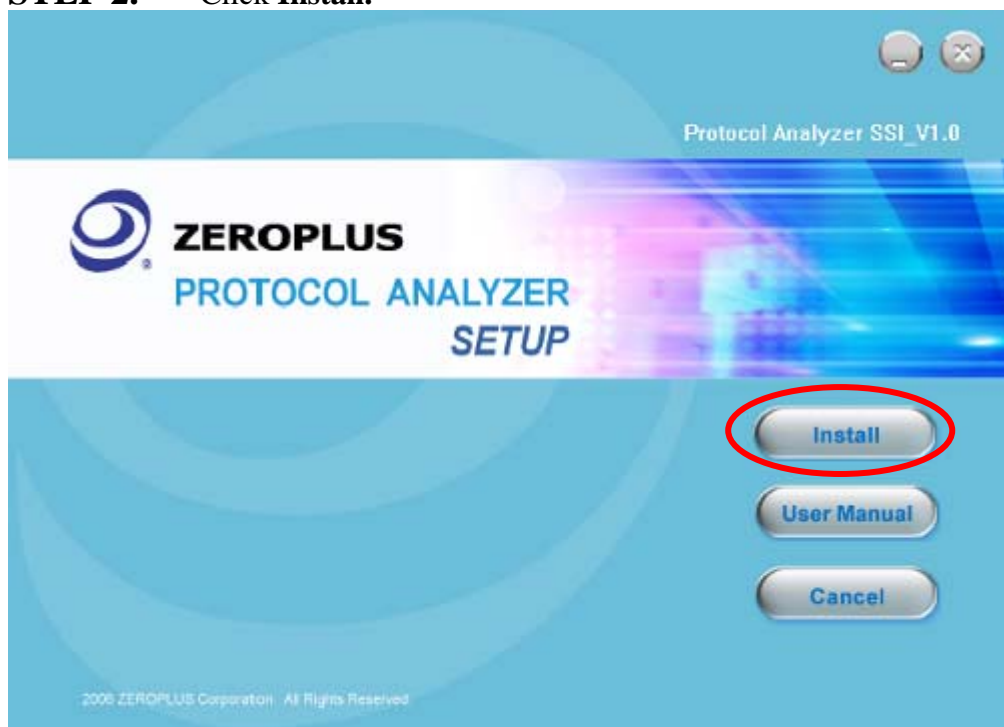
Please install the software as the following steps:

- ※ Remark: 1. The installation steps for all protocol analyzers are the same; you can complete the installation by following procedures. Following is an example on how to install protocol analyzer SSI.
- ※ Remark: 2. We won't have additional notice for you, when there is any modification of the module specification. If there is some unconformity caused by the module version upgrade, users should take the module software as the standard.

STEP 1. Install Protocol Analyzer Module.

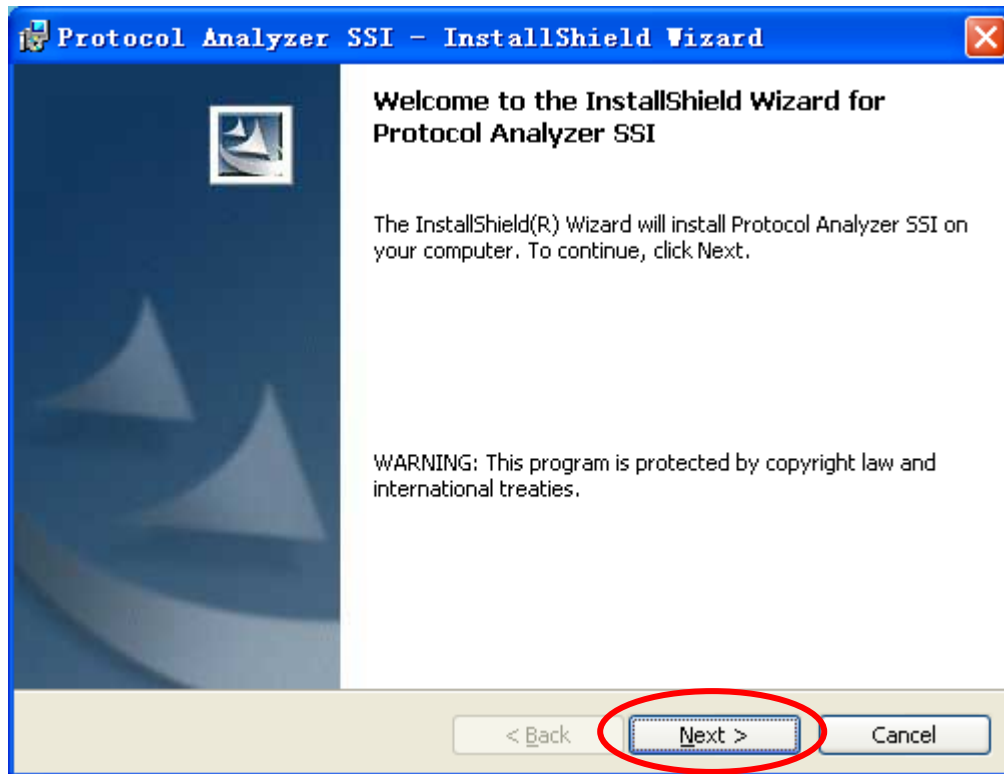


STEP 2. Click Install.

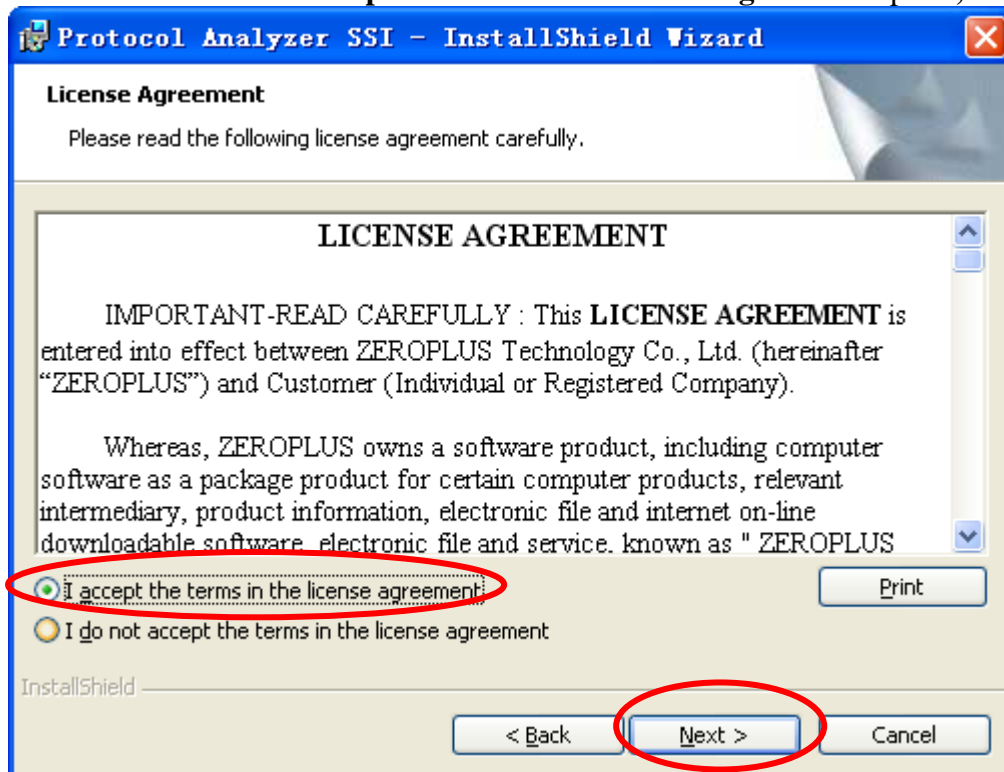




STEP 3. Click Next.

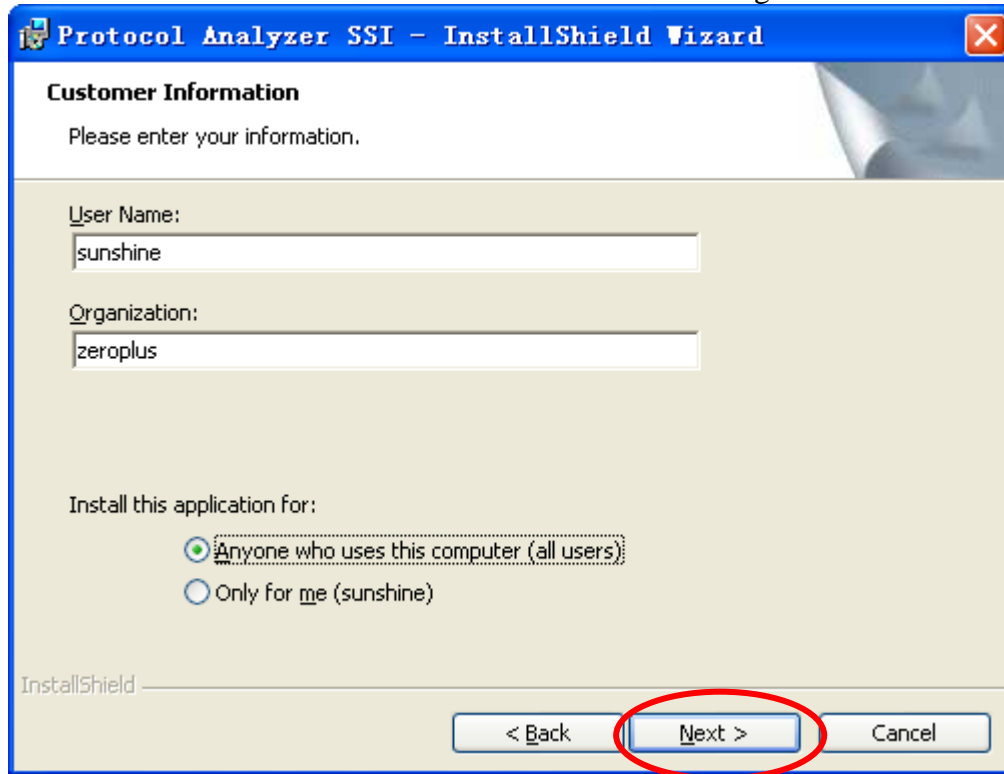


STEP 4. Select I accept the terms in the license agreement option, and then press Next.

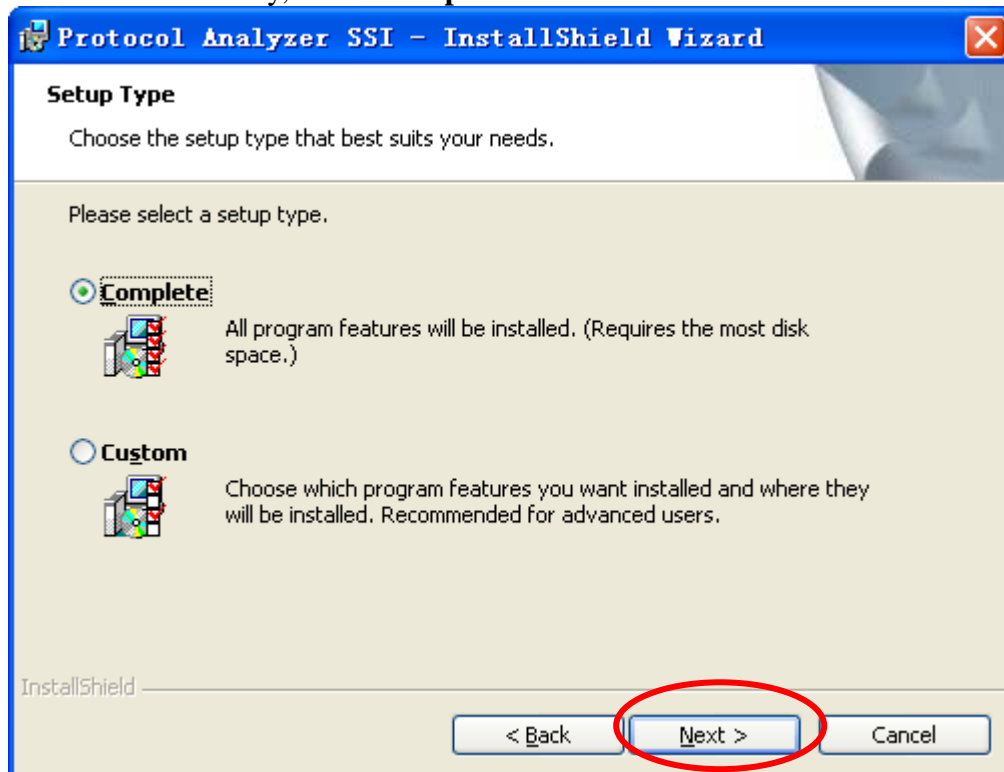




STEP 5. Fill in users' information in the below dialog box and then click **Next**.

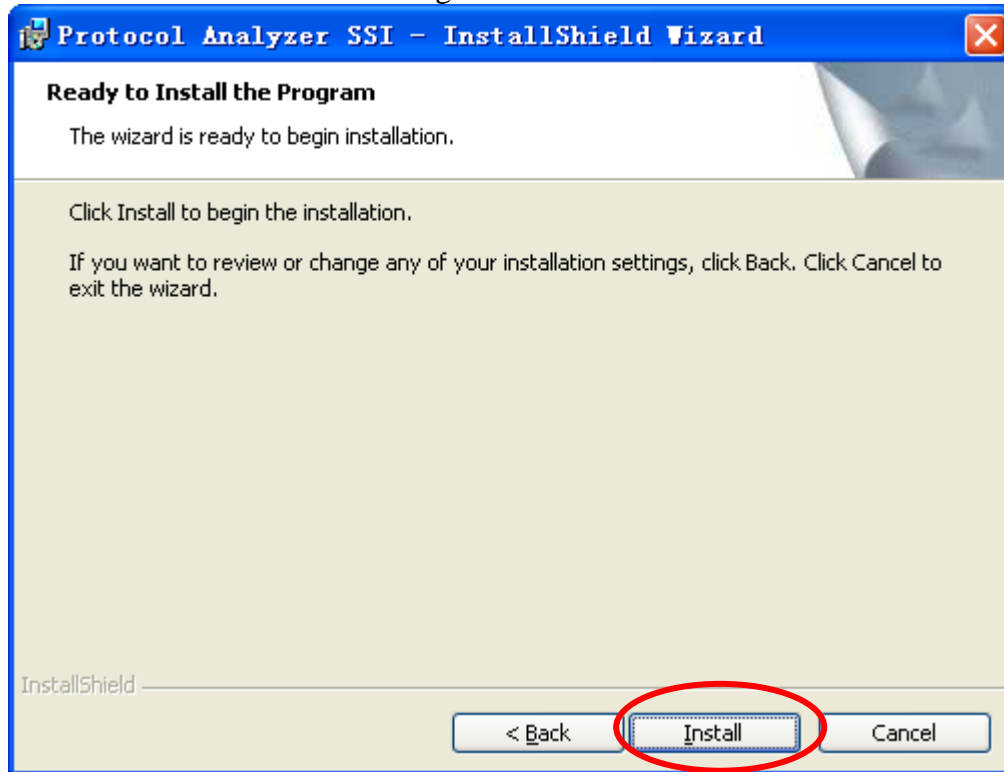


STEP 6. Firstly, select **Complete** and then click **Next**.

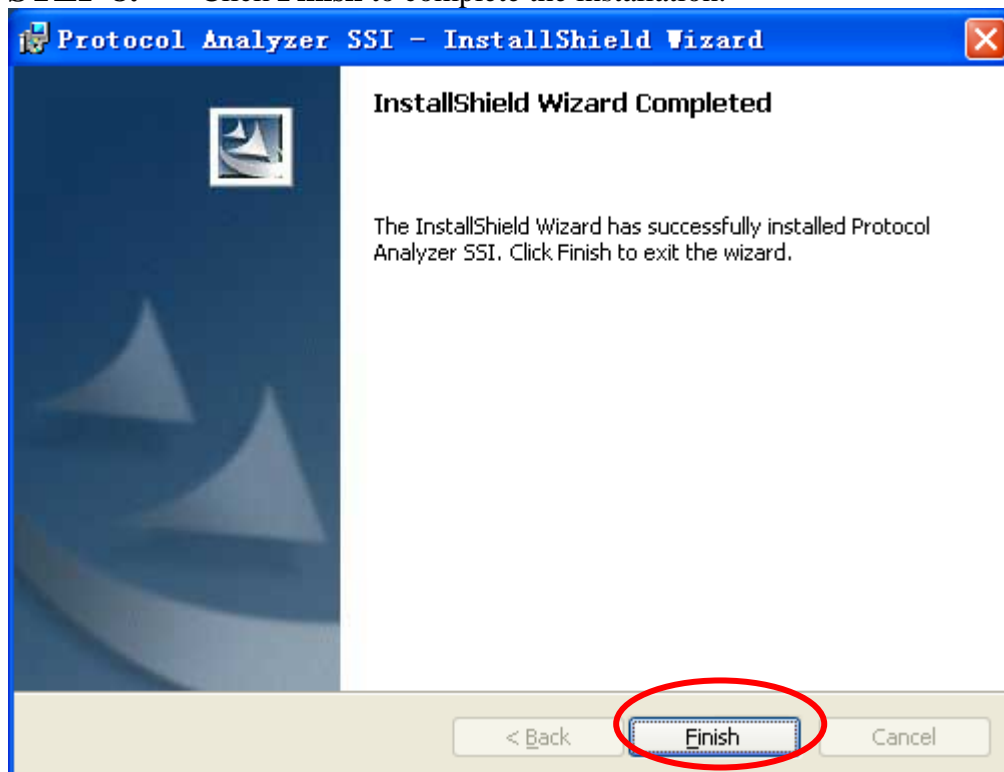




STEP 7. Click **Install** to begin the installation.



STEP 8. Click **Finish** to complete the installation.

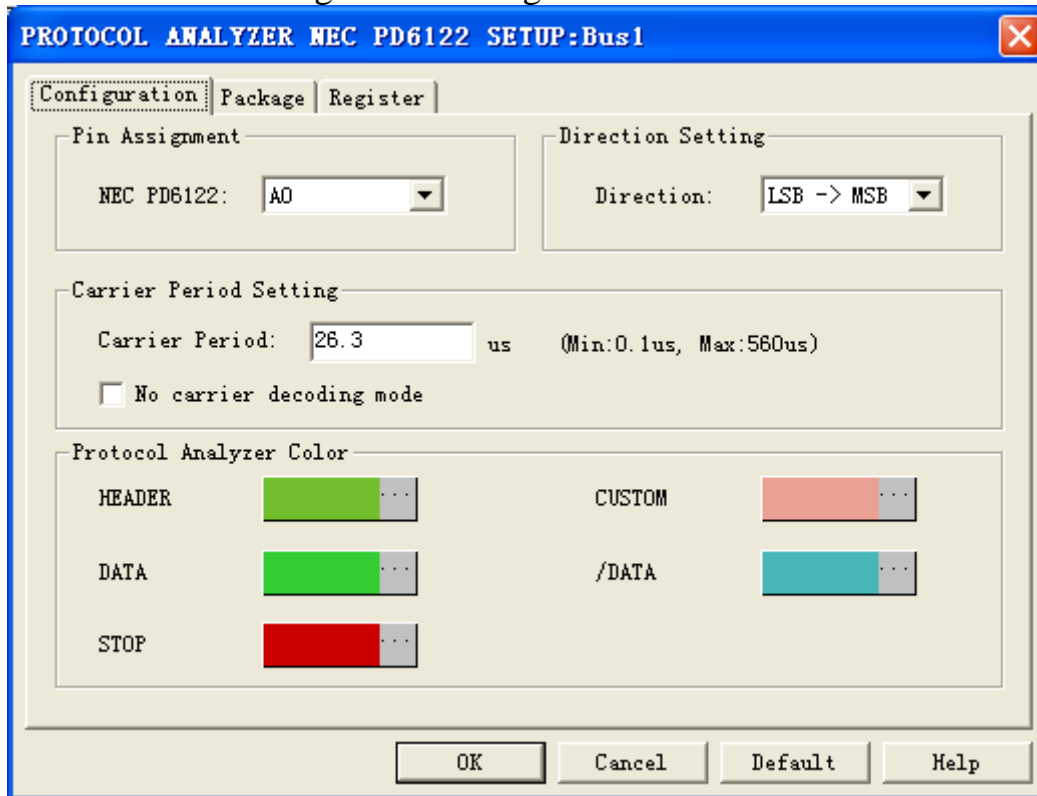




2 User Interface

In the configuration dialog box, please refer to the below images to select options of setting **NEC PD6122 MODULE**.

NEC PD6122 Configuration dialog box



Pin Assignment : It is the channel selection for NEC PD6122; the default is A0.

Direction Setting: The direction setting for data transmission is LSB->MSB or MSB->LSB.

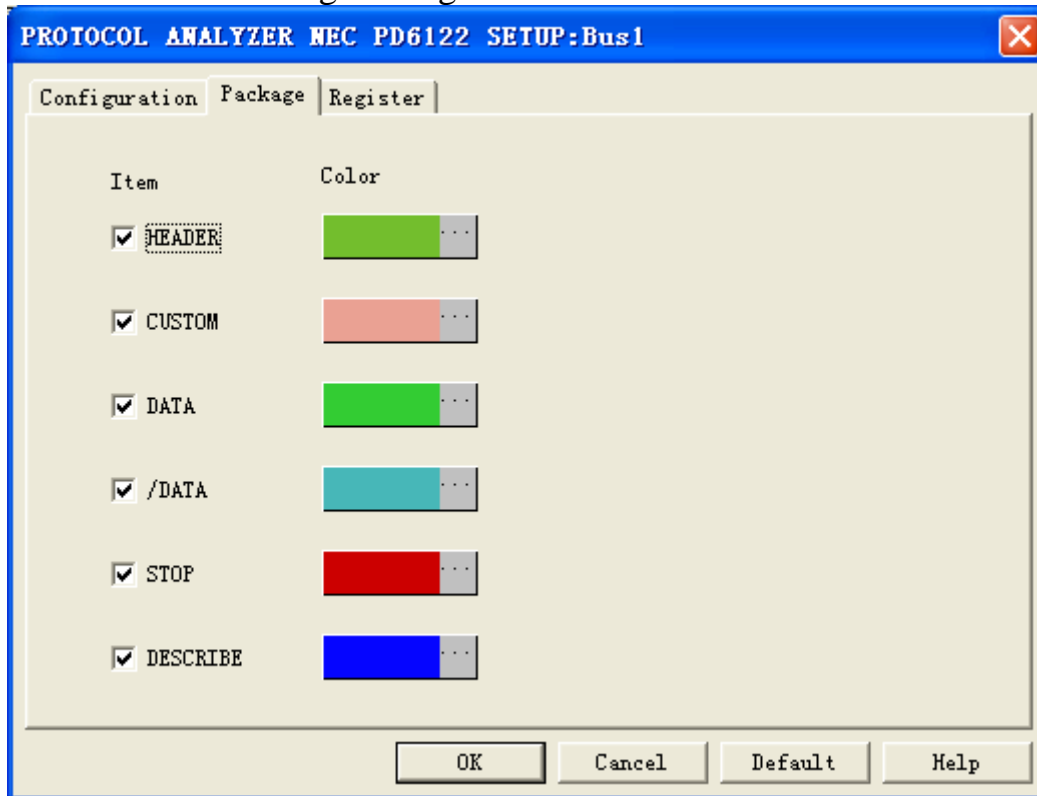
Carrier Period Setting: It is for users to set the carrier period.

No carrier decoding mode: This mode can be used, if the waveforms have been coded to filter the carrier.

Protocol Analyzer Color: Users can vary the colors of the items.

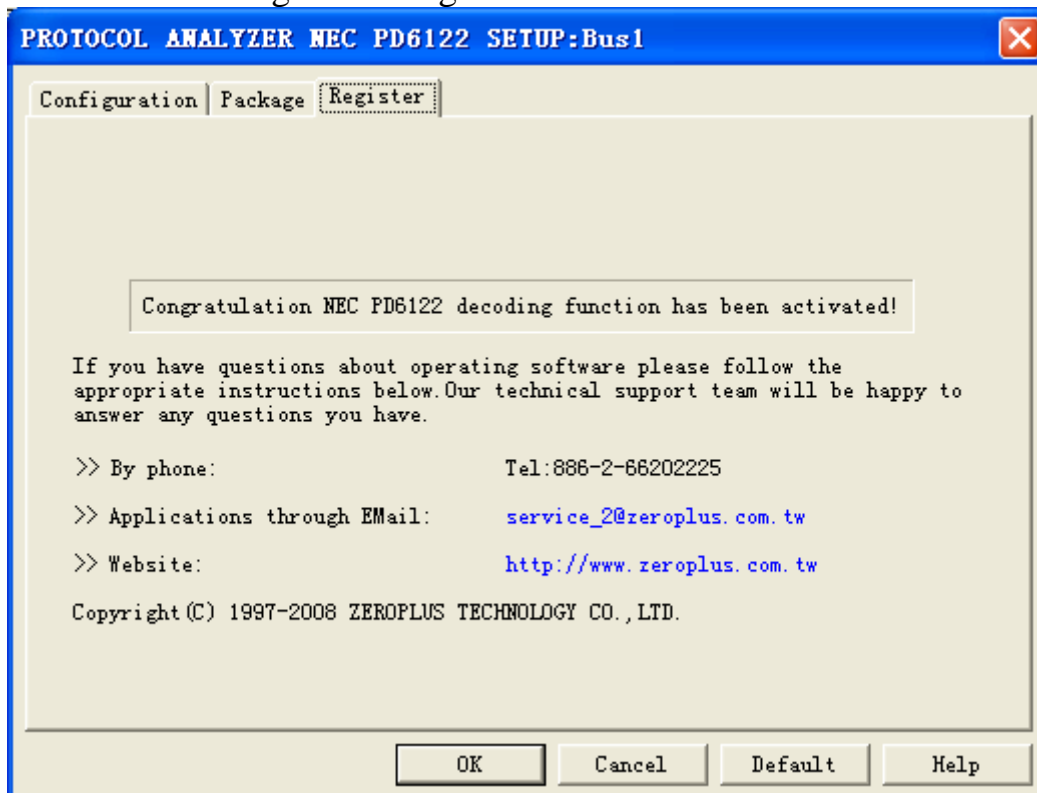


NEC PD6122 Package dialog box



In the package dialog box, users can vary the colors of the items.

NEC PD6122 Register dialog box

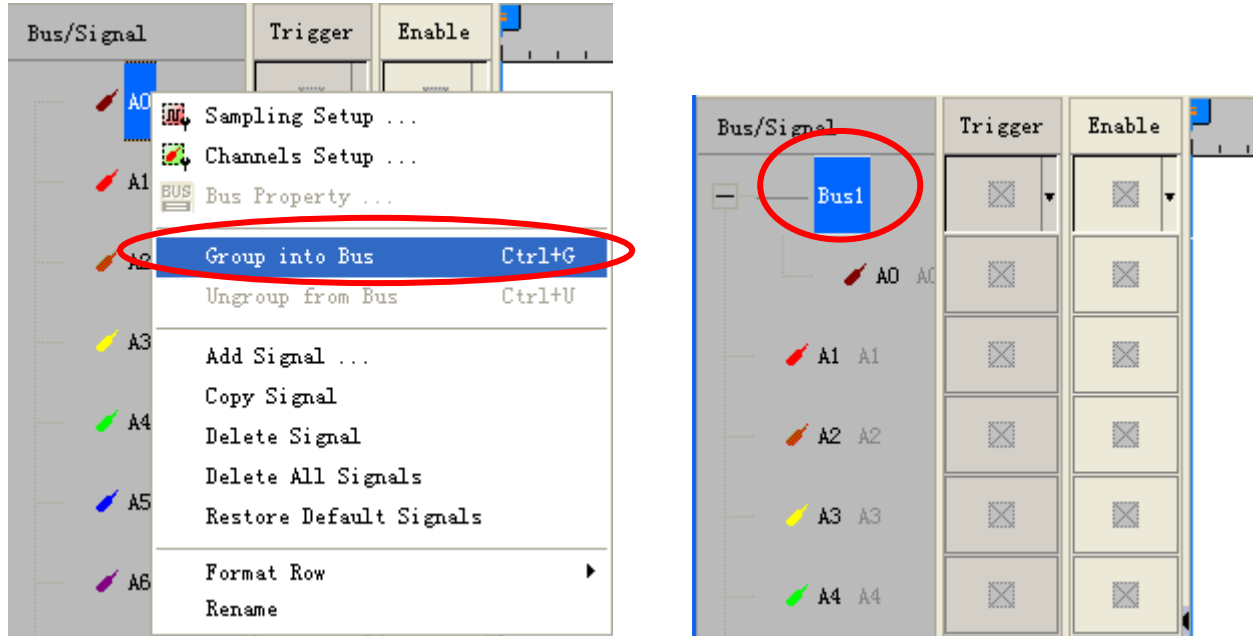


There is written ZeroPlus company information. If you have any questions about software operations, you can contact ZeroPlus by Telephone or Email.

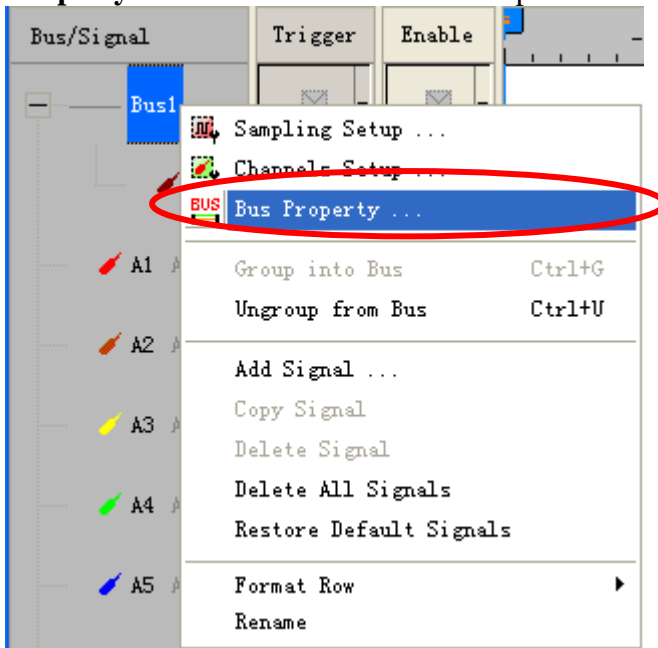


3 Operating Instructions

STEP 1. Group the unanalyzed channels into **Bus1** by pressing the **Right Key** on the mouse.

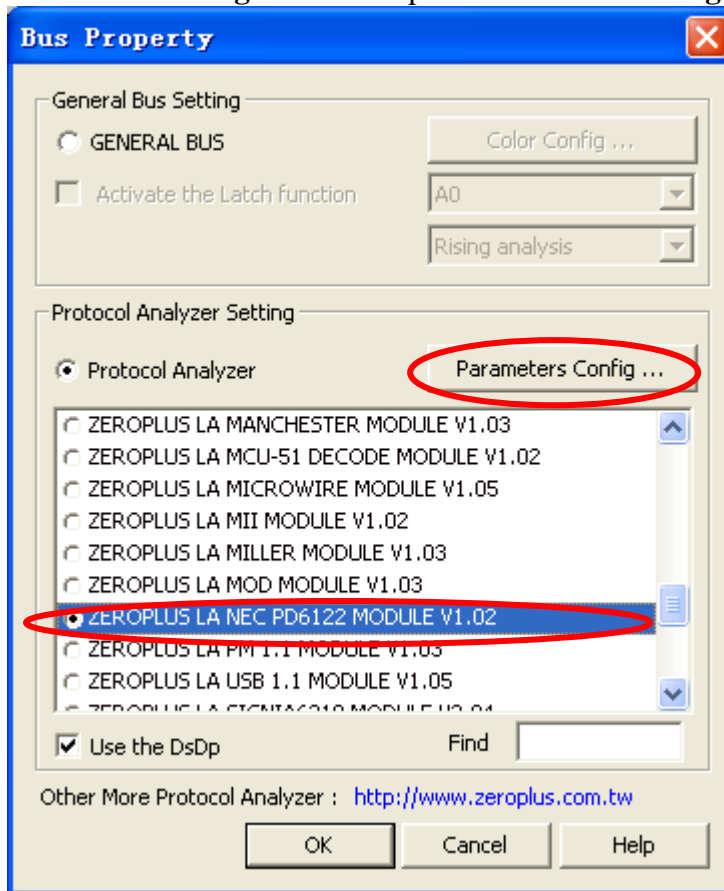


STEP 2. Select **Bus1**, then press **Right Key** on the mouse to list menu, then press **Bus Property** or **Bus** bar on the toolbar to open **Bus Property** dialog box.

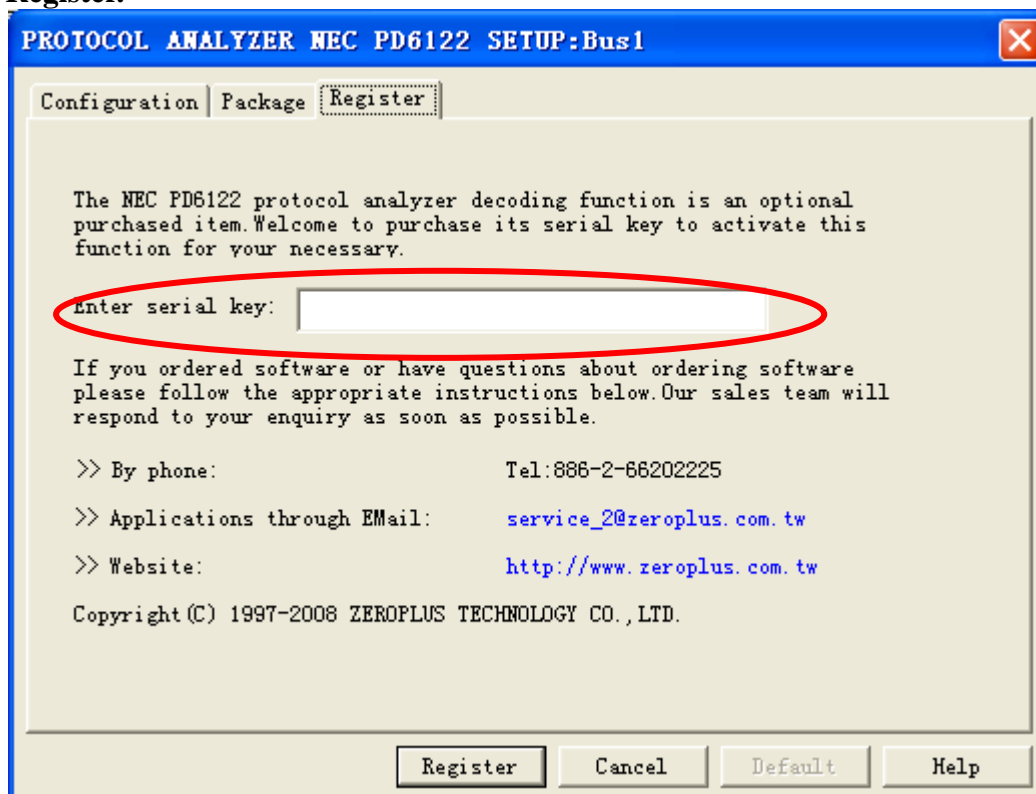




STEP 3. For Protocol Analyzer NEC PD6122 Parameters Configuration, select Protocol Analyzer, and then select **ZEROPLUS LA NEC PD6122 MODULE V1.02**. Next click **Parameters Configuration** to open **Parameters Configuration** dialog box.

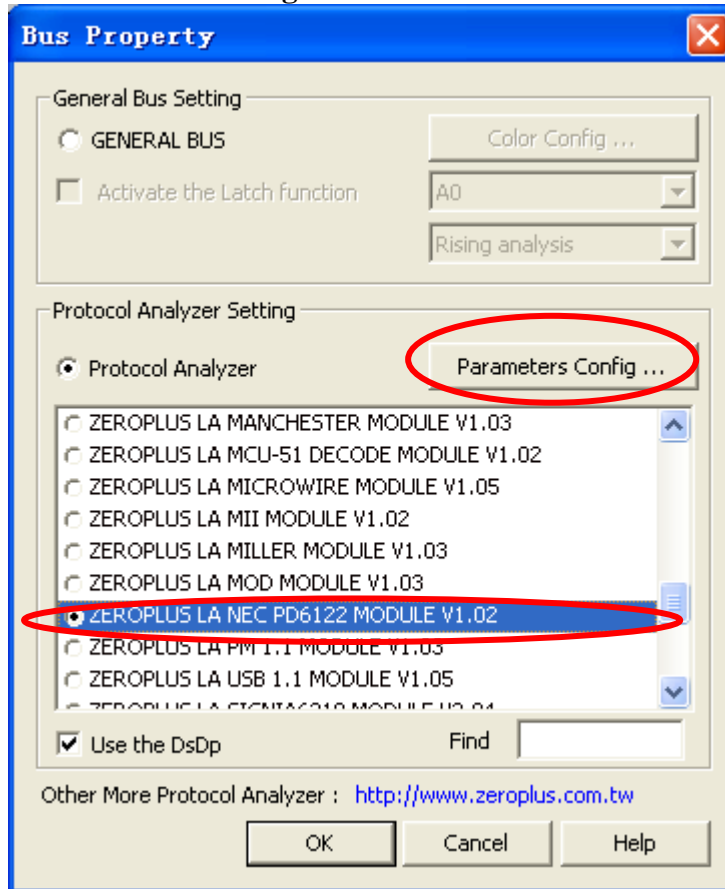


STEP 4. Click Register tab to type the serial key number of NEC PD6122. Then, press **Register**.

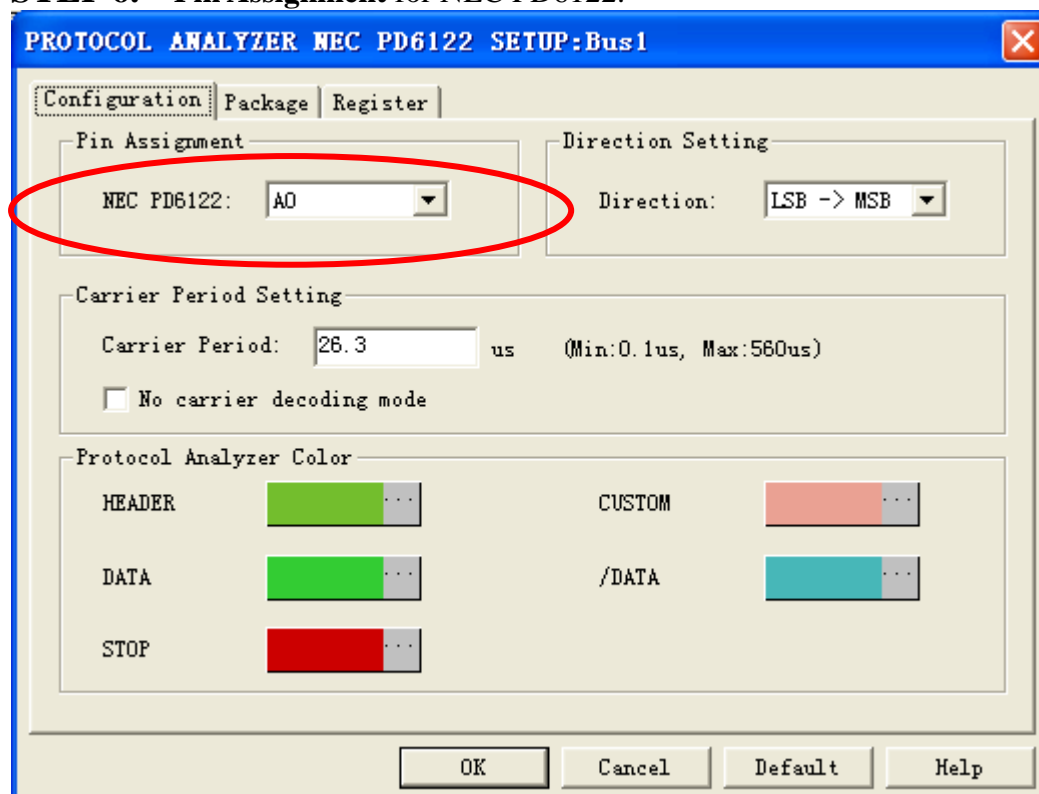




STEP 5. After completing **Register**, come back to the **Bus Property** dialog box, and then click the **Parameters Configuration** to start the Protocol Analyzer NEC PD6122 setup.

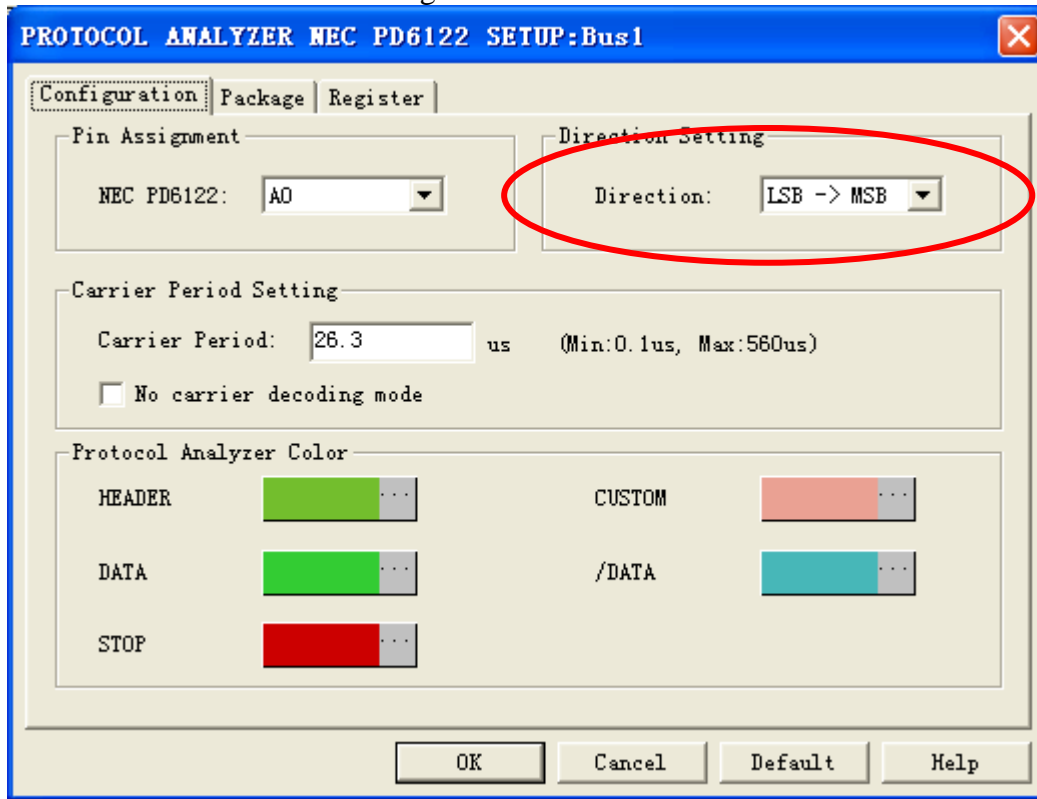


STEP 6. Pin Assignment for NEC PD6122.

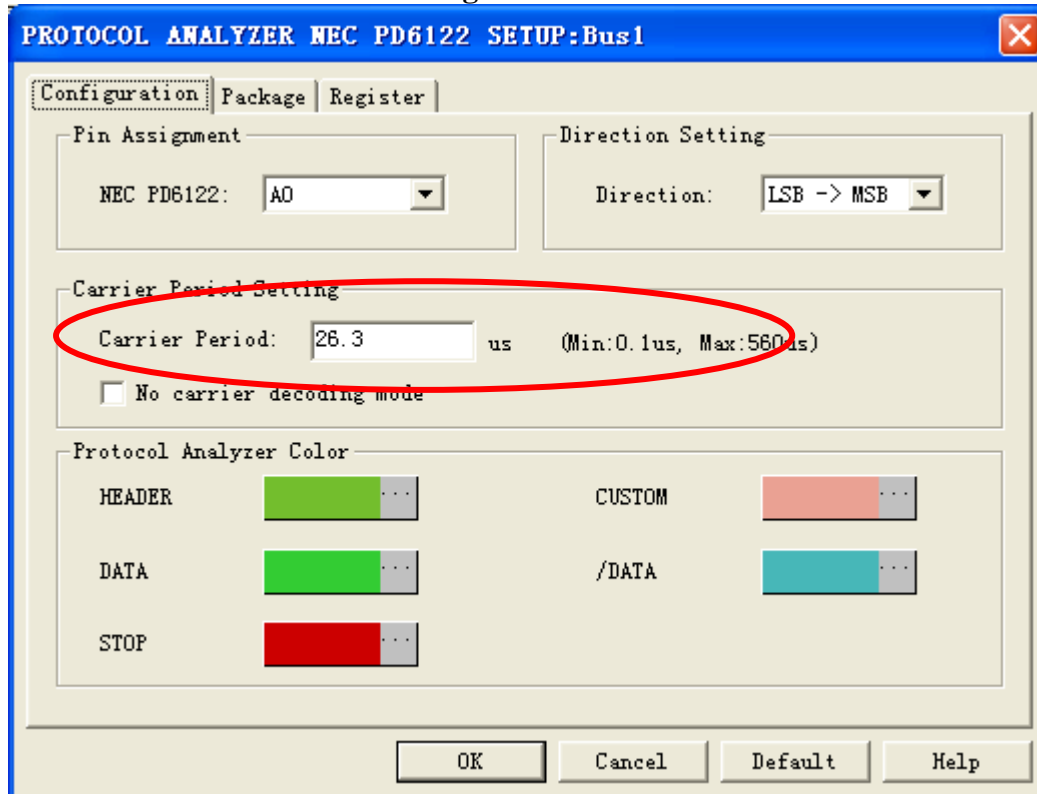




STEP 7. The direction setting for data transmission is LSB->MSB or MSB->LSB.

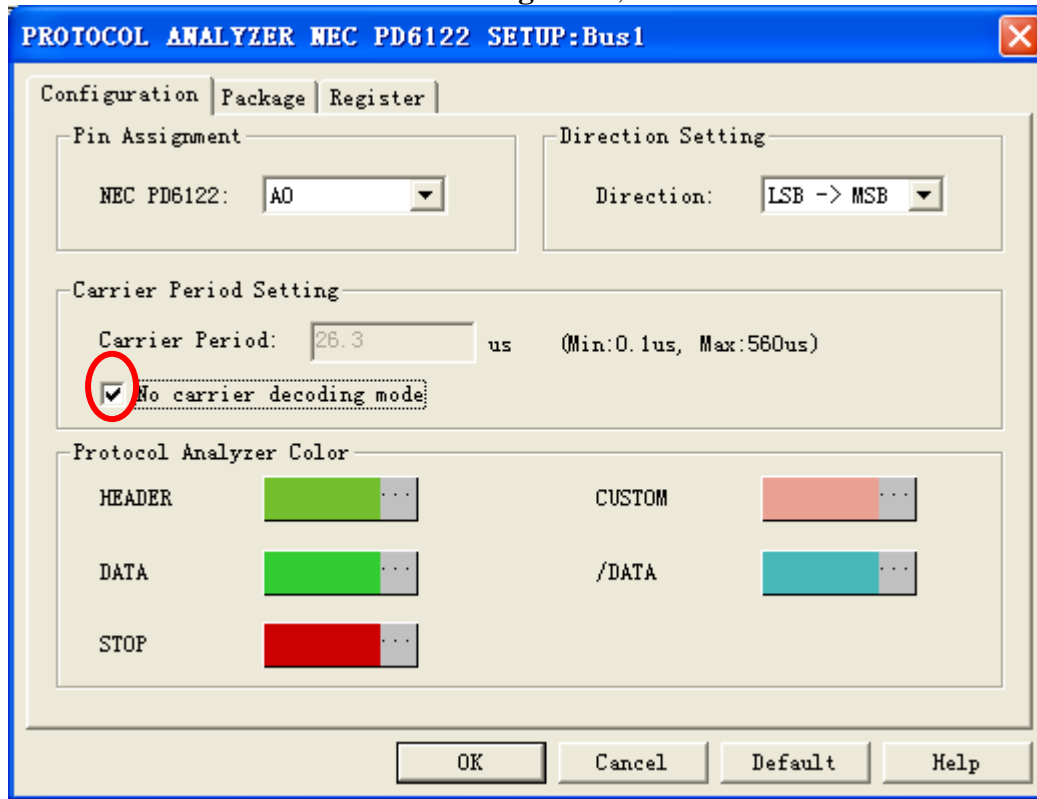


STEP 8. Carrier Period Setting.

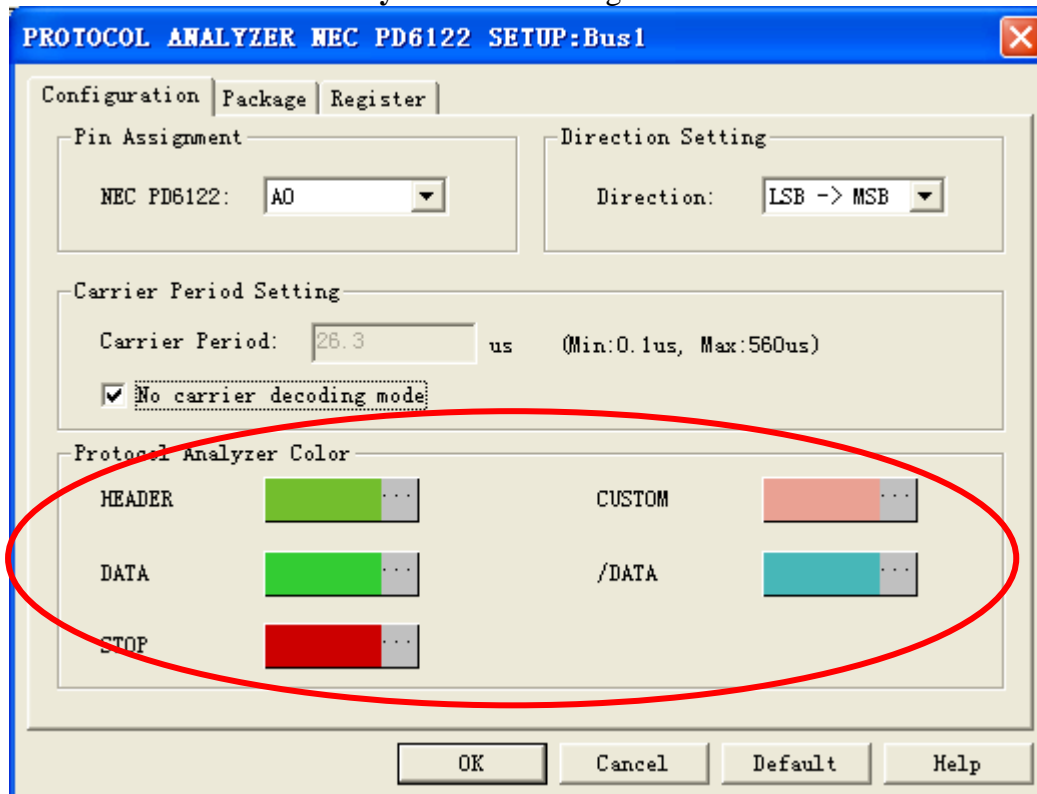




STEP 9. Select No carrier decoding mode, if it is the no carrier mode.



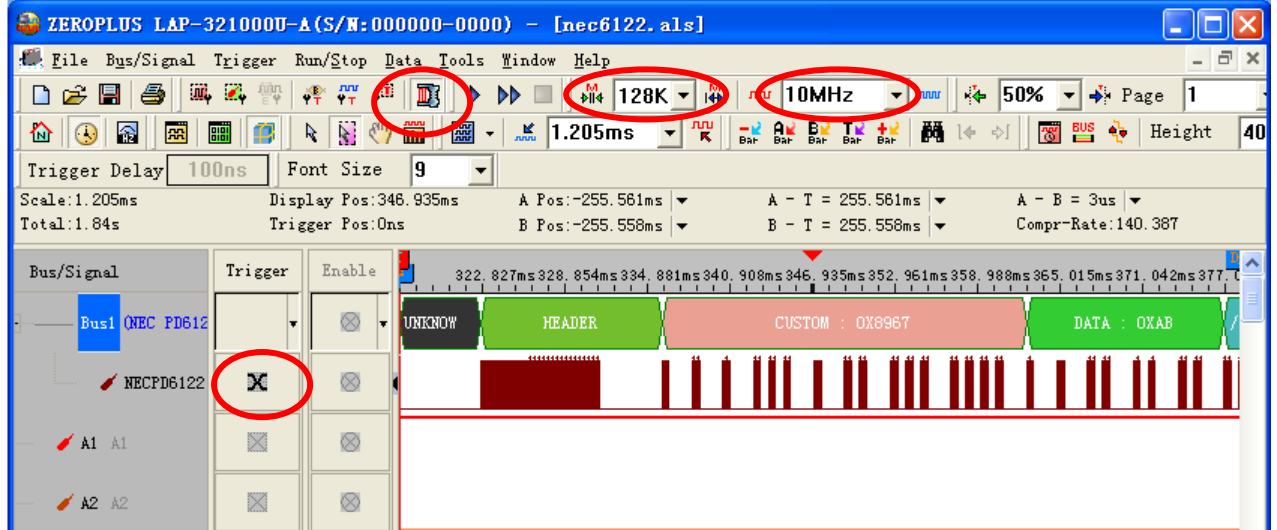
STEP 10. Protocol Analyzer Color Setting.





STEP 11. Following pictures show the completion of the protocol analyzer decoding and the package list. The Trigger condition is set as Either Edge; the Memory depth is 128K; the Sampling frequency is 10MHz. The compression mode is activated.

Protocol Analyzer Decoding



Package List

