



孕龍科技股份有限公司
ZEROPLUS TECHNOLOGY CO.,LTD

Instrument Business Department

MILLER Specification

Version : V1.0

Content

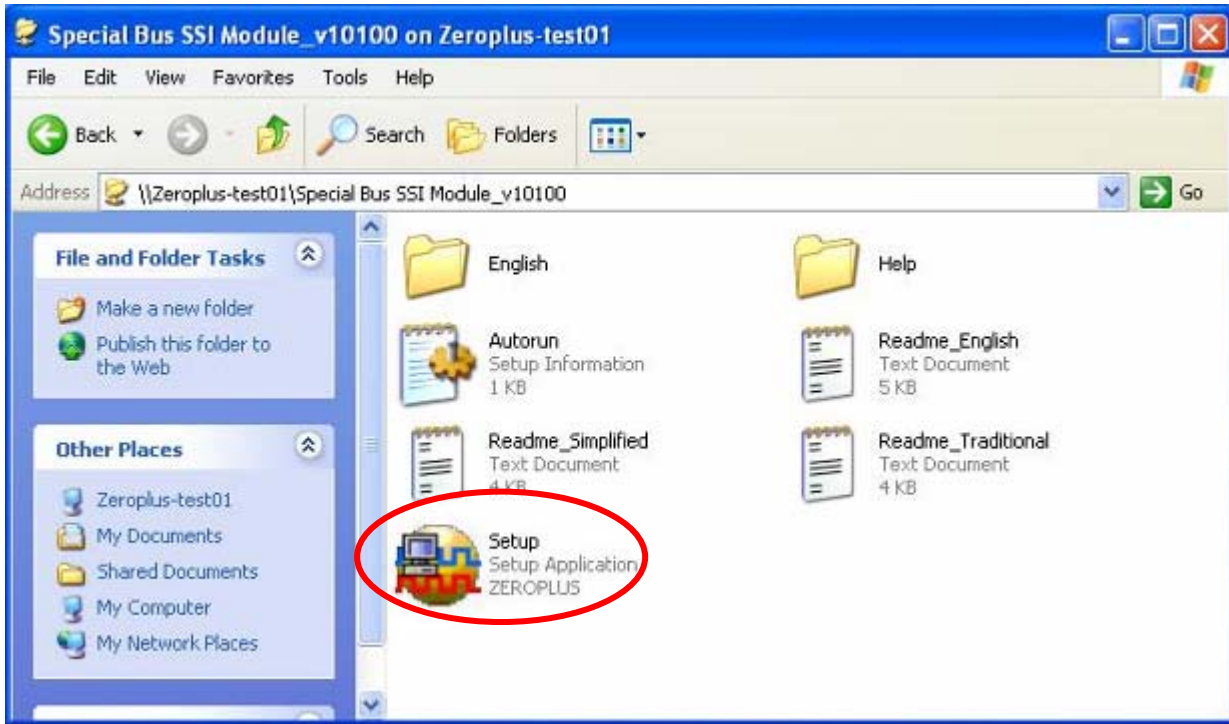
1	Software Installation	3
2	User Interface	7
3	Operating Instructions.....	9

1 Software Installation

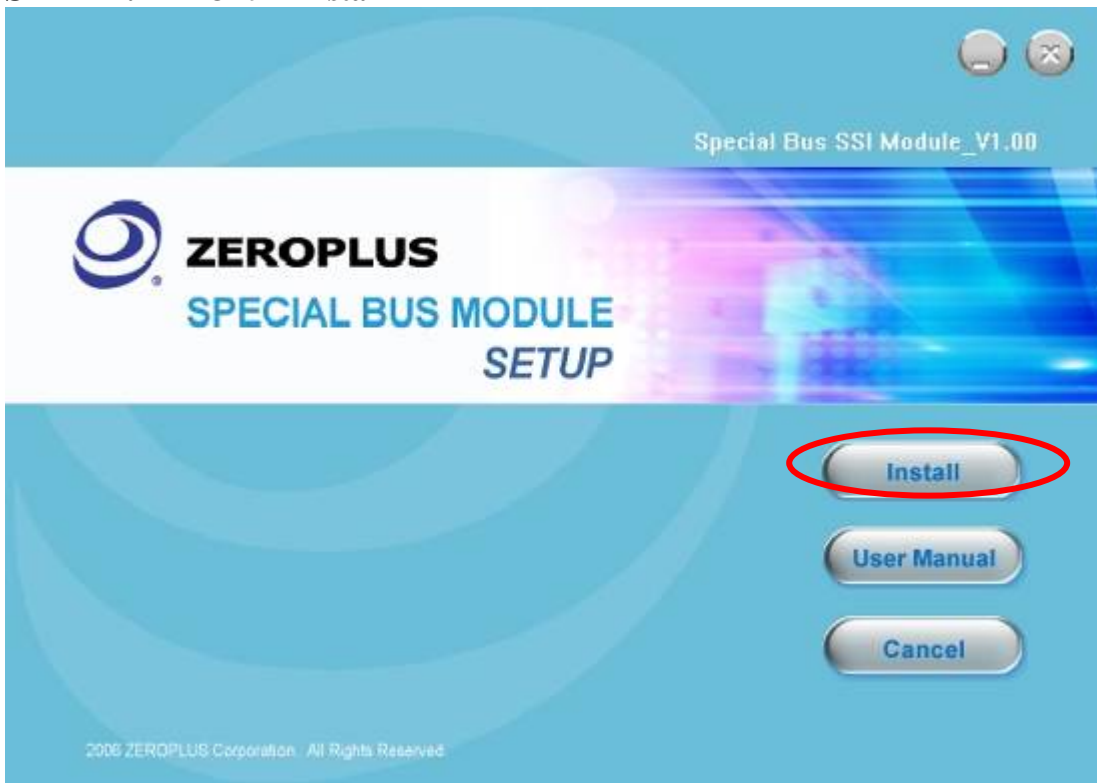
Please setup software according to the following steps.

※ Notice: The installing steps to setup all buses are in the same, you can complete installation by following procedures. Below images show an example to install SSI buses..

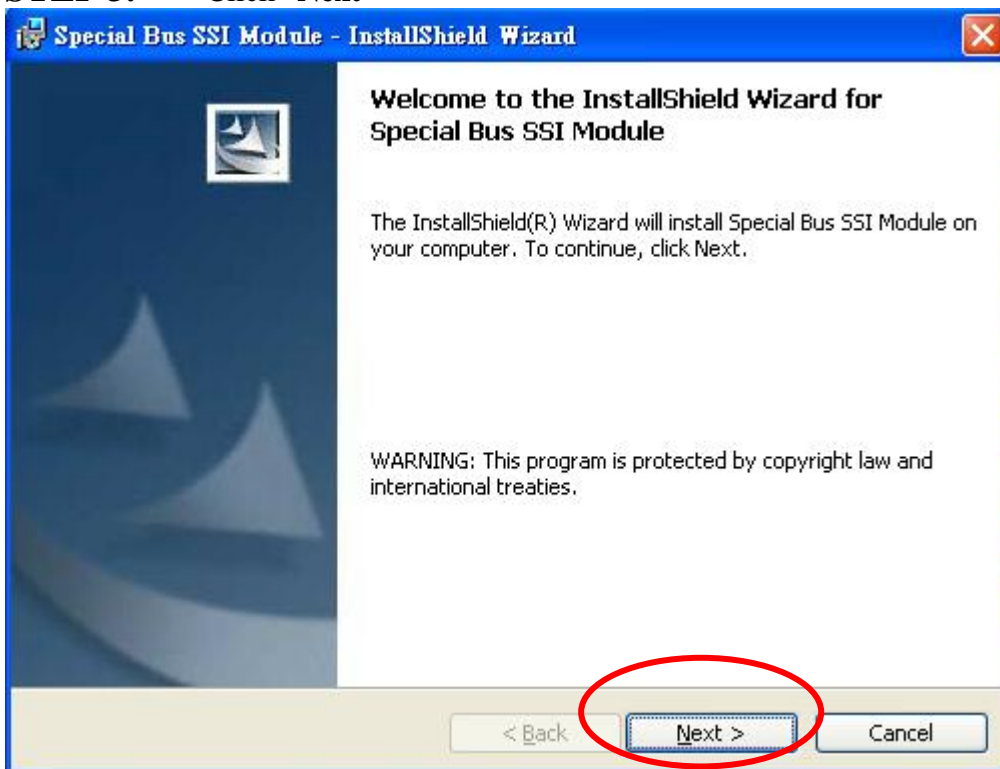
STEP 1. Install Bus Module



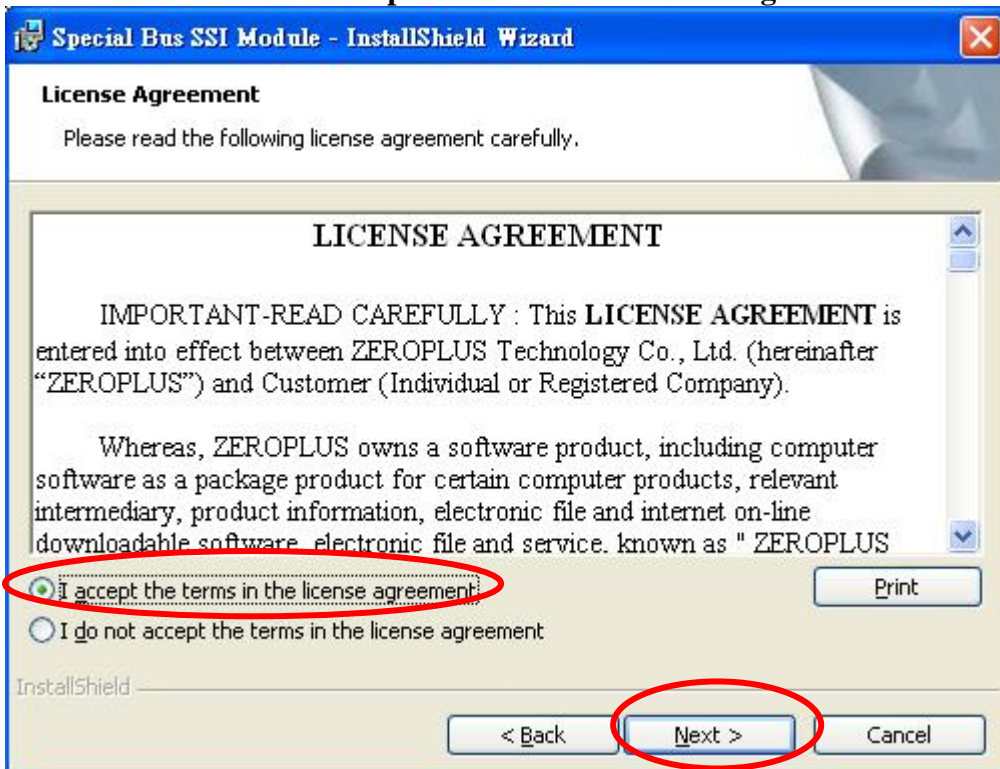
STEP 2. Click "Install"



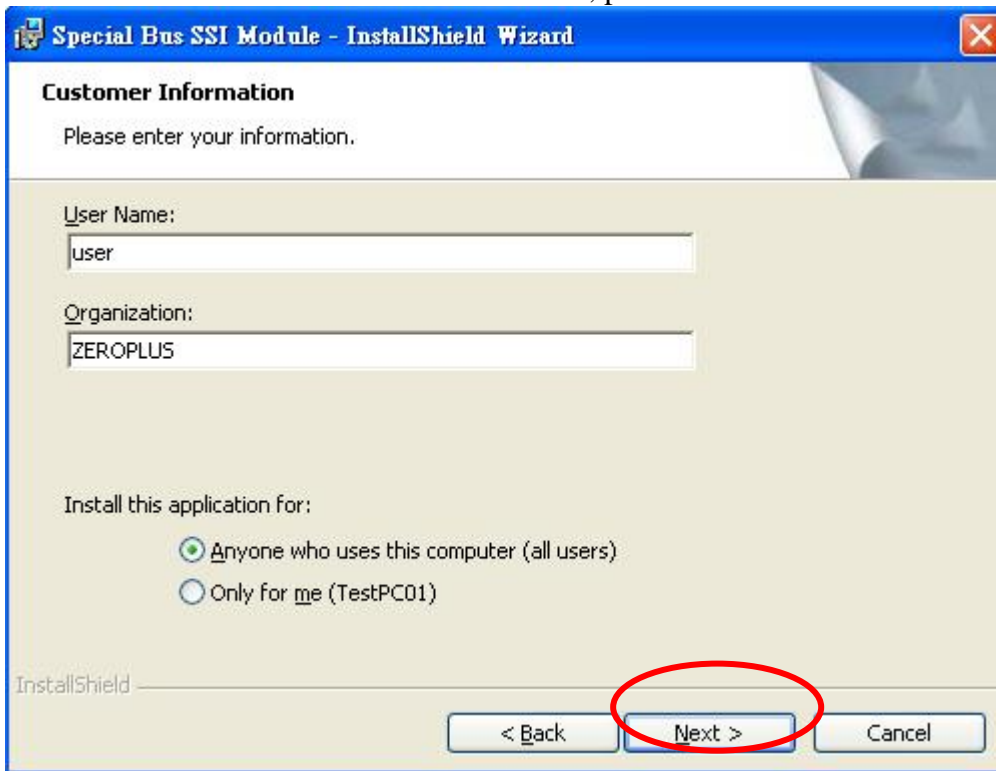
STEP 3. Click “Next”



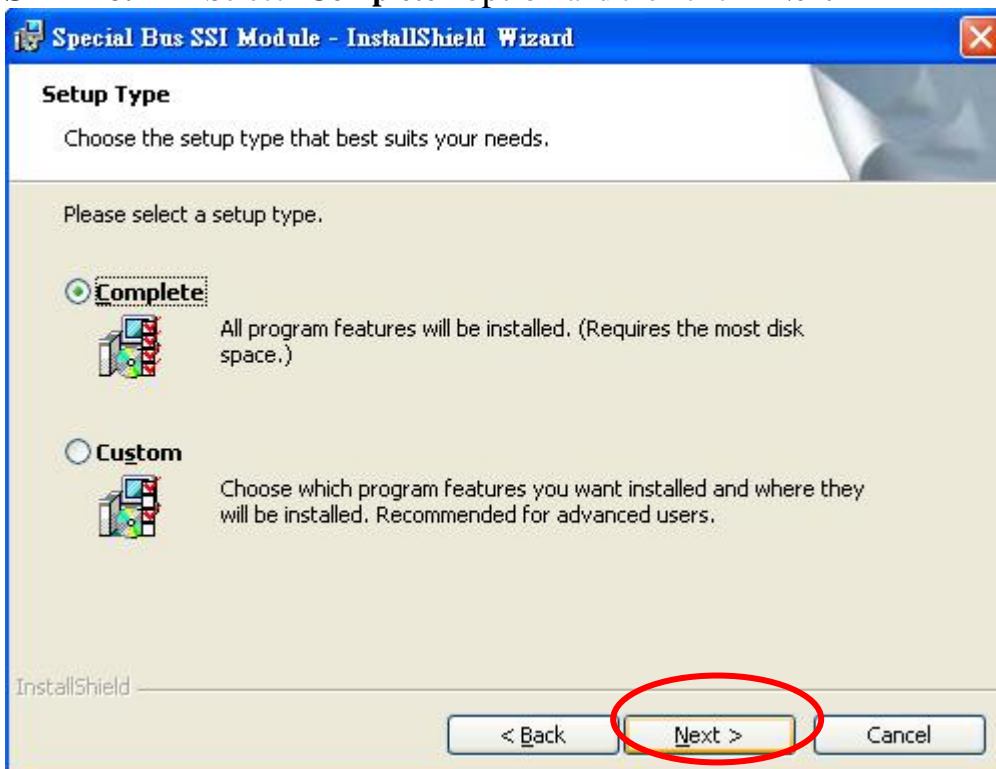
STEP 4. Select “I accept the terms in the license agreement” and then, click “Next”.



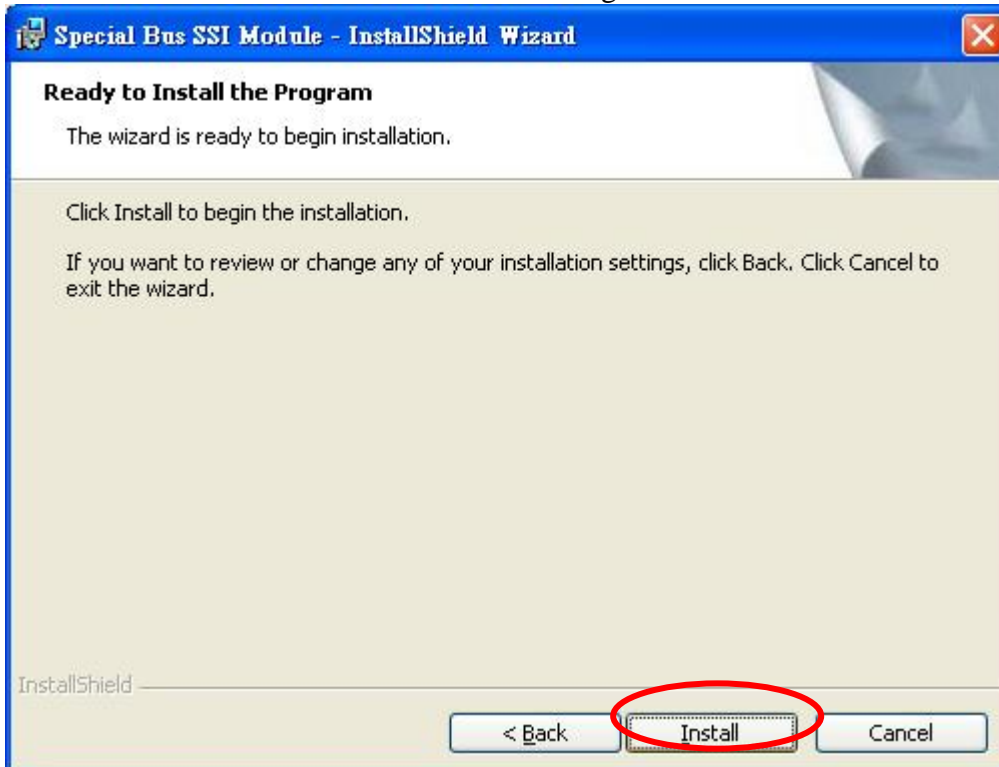
STEP 5. Fill in User Information. Then, press “Next”



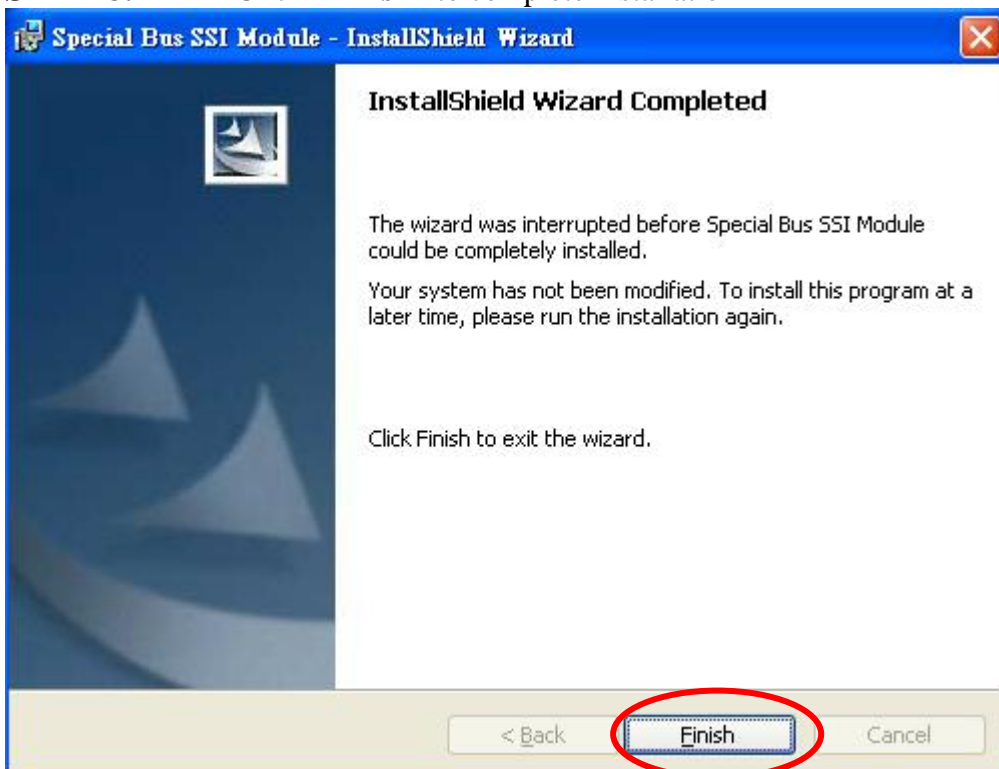
STEP 6. Select “Complete” option and then click “Next”



STEP 7. Click **Install** to start installing



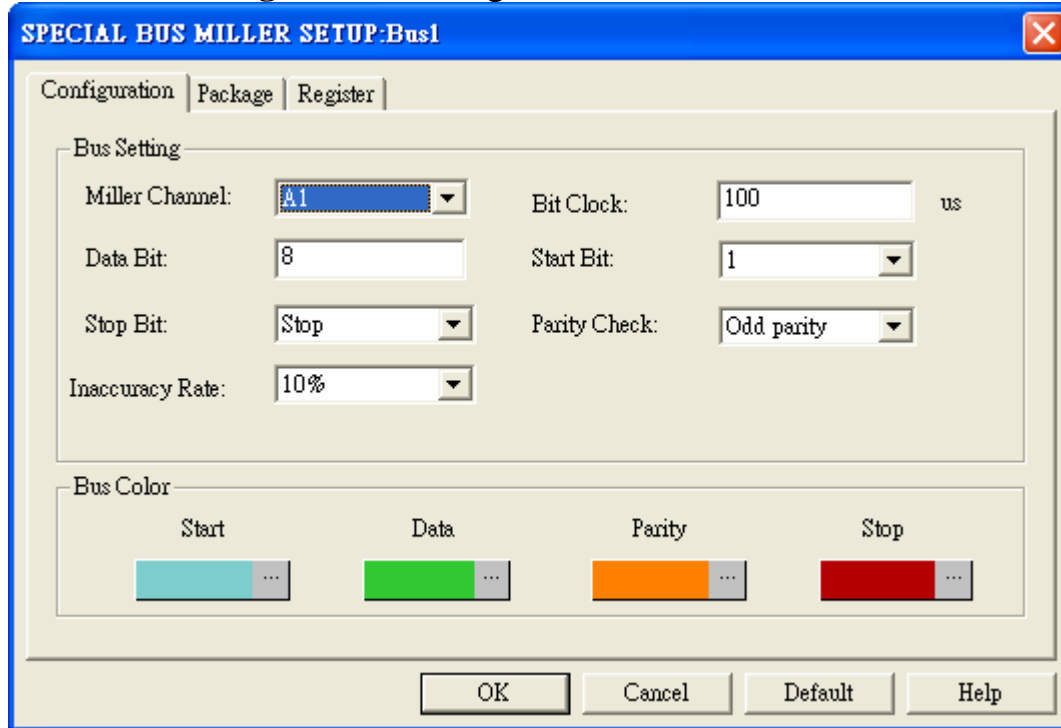
STEP 8. Click **“Finish”** to complete installation



2 User Interface

In the configuration, please refer to image below to select options of setting MILLER

MILLER Configuration Dialog Box



MILLER Channel Options: The default is A0.

Bit Clock: The Bit Clock is the length of time for Data bits. The default is 100us.

Data Bit: User can enter a value to adjust the date length and the default is 8 bits.

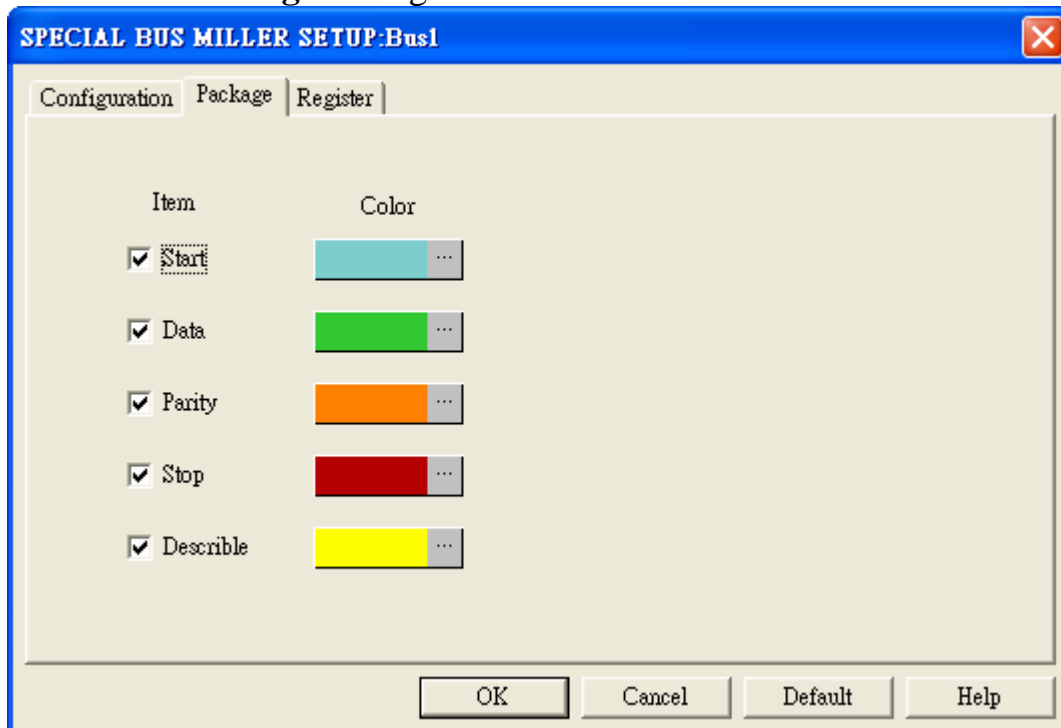
Start Bit: 0 or 1. The default is 1.

Stop Bit: Stop, Non Stop. The default is Stop.

Parity Bit: There are three types can be chose on the list, NON PARITY, ODD PARITY and EVEN PARITY. The default is ODD PARITY.

Bus Color: The default colors are as showing above. User can vary the Bus color.

MILLER Package Dialog Box

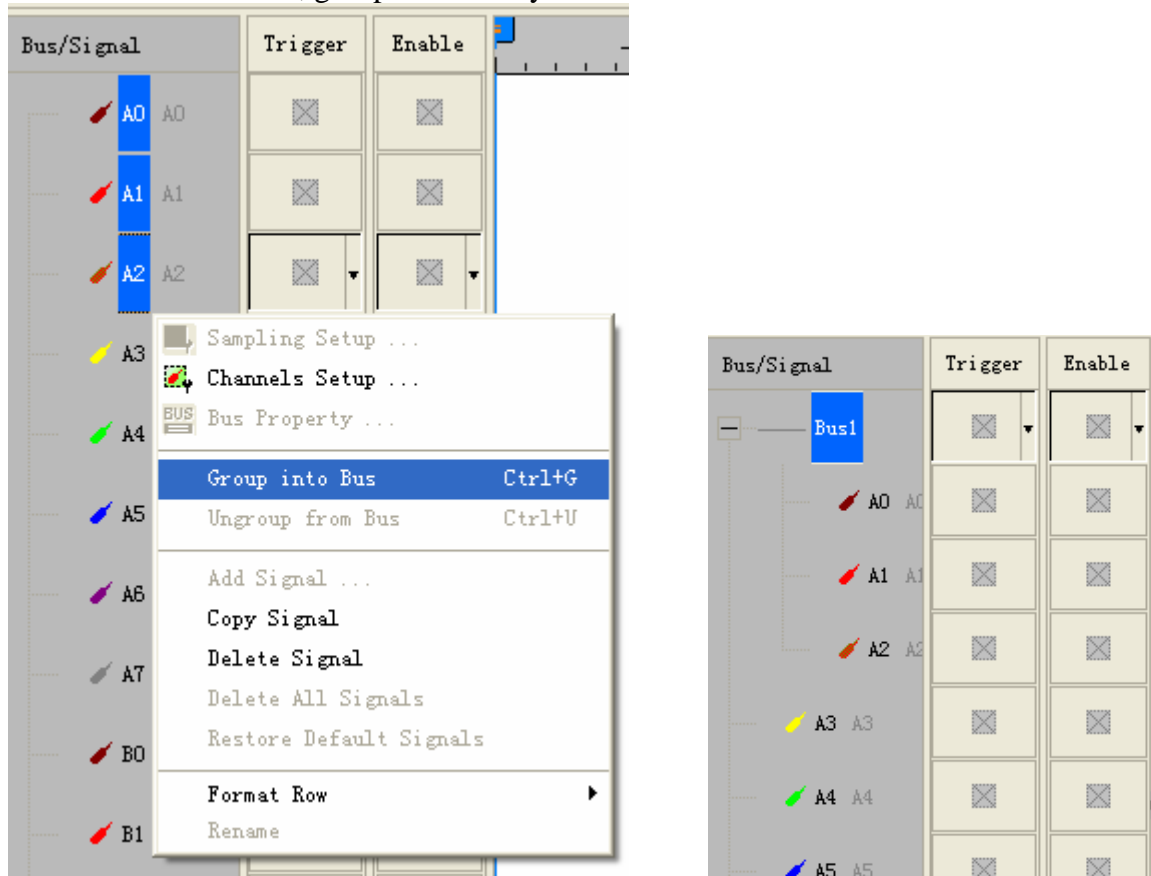


MILLER Register Dialog Box

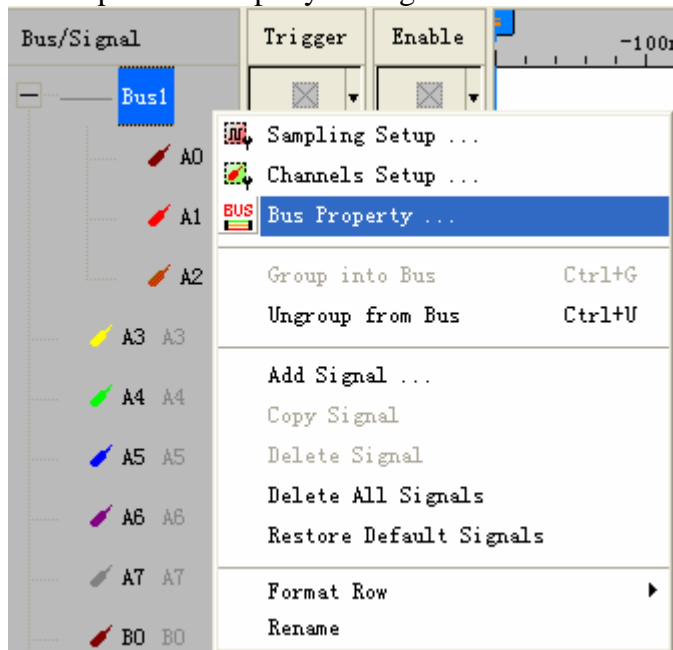


3 Operating Instructions

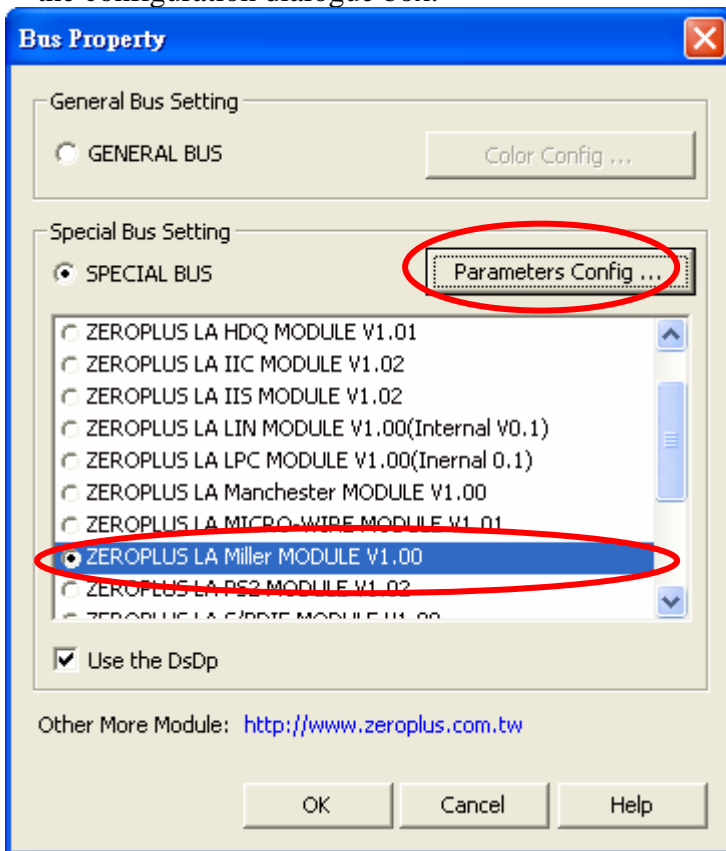
STEP 1. At First, group the unanalyzed channels into bus1



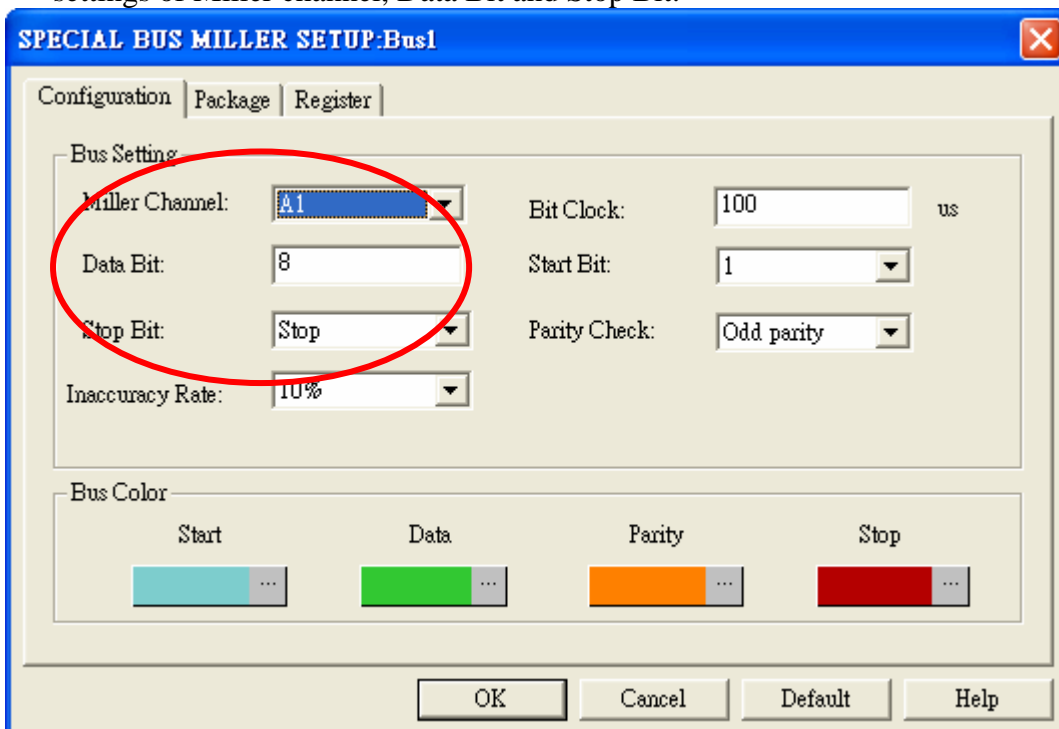
STEP 2. Selected Bus 1, then press **Right Key** on mouse to list menu. Next, click “**Bus Property**” to open Bus Property Dialog Box



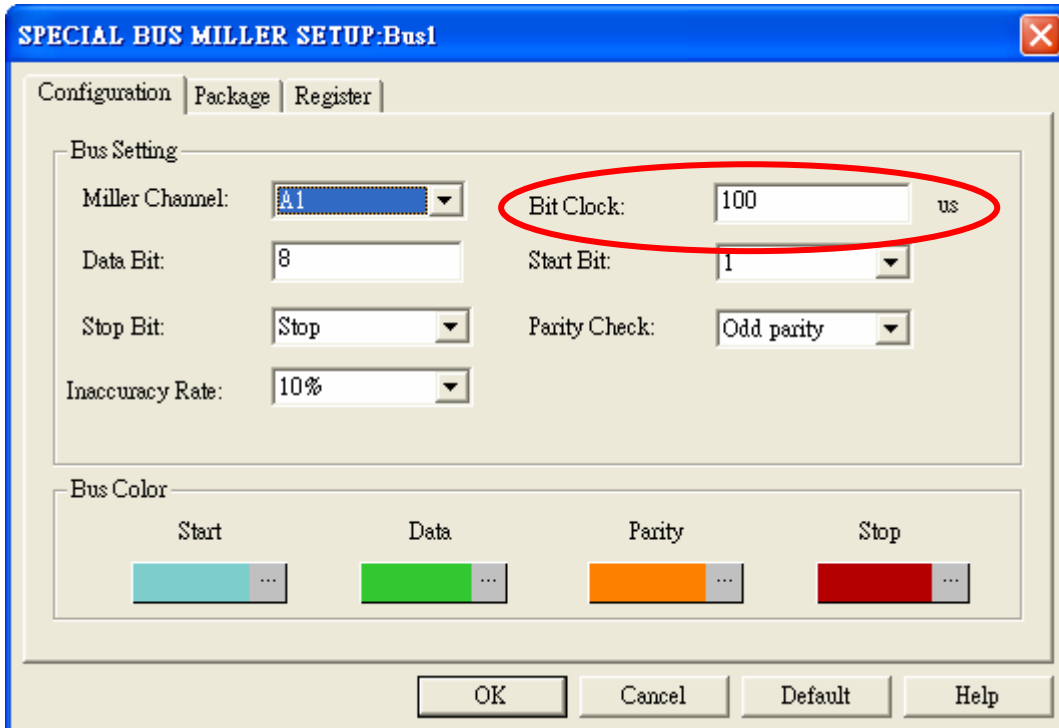
STEP 3. For Special Bus Parameter Configuration, select Special Bus and then choose ZEROPLUS LA Miller MODULE V1.00 (Internal V1.0).Next click “Parameter Configuration” to open the configuration dialogue box.



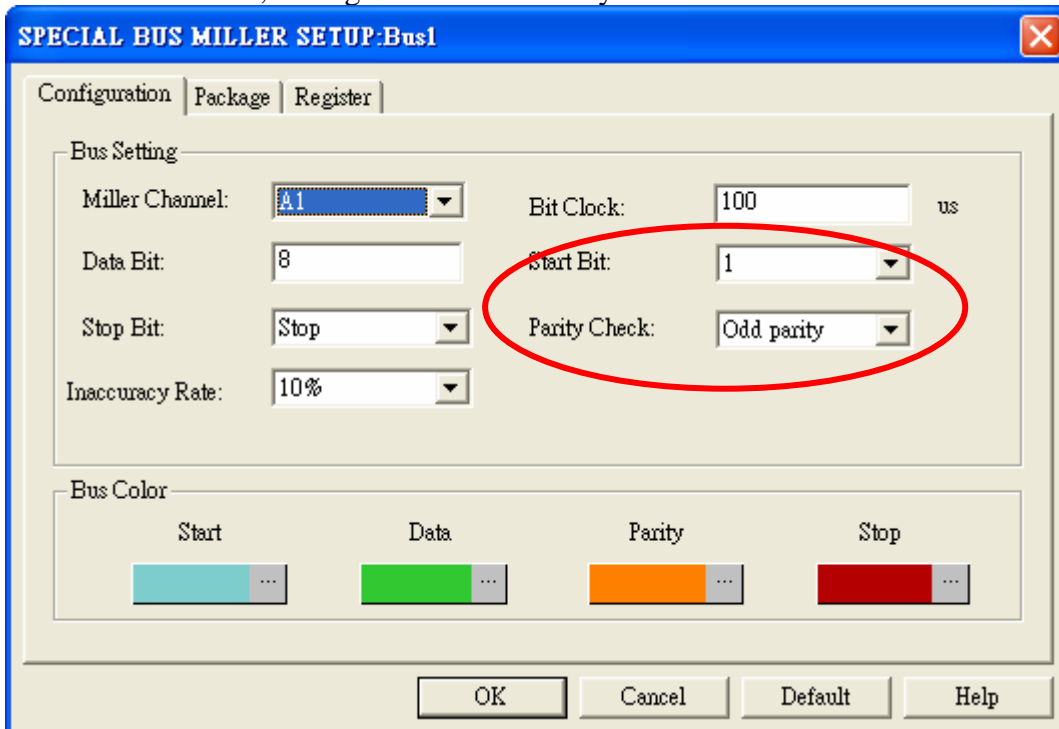
STEP 4. After entering the serial key of Miller, it turns to the configuration Dialog Box for the settings of Miller channel, Data Bit and Stop Bit.



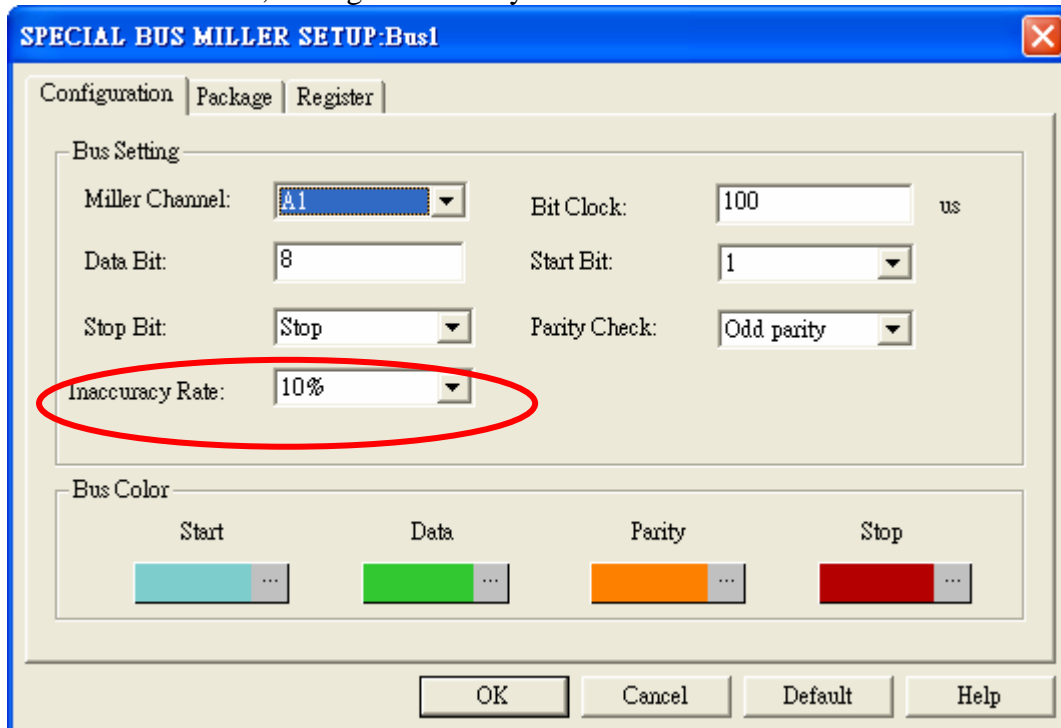
Next, enter a value on the Bit Clock column.



STEP 5. Next, setting Start Bit and Parity Check Bit.

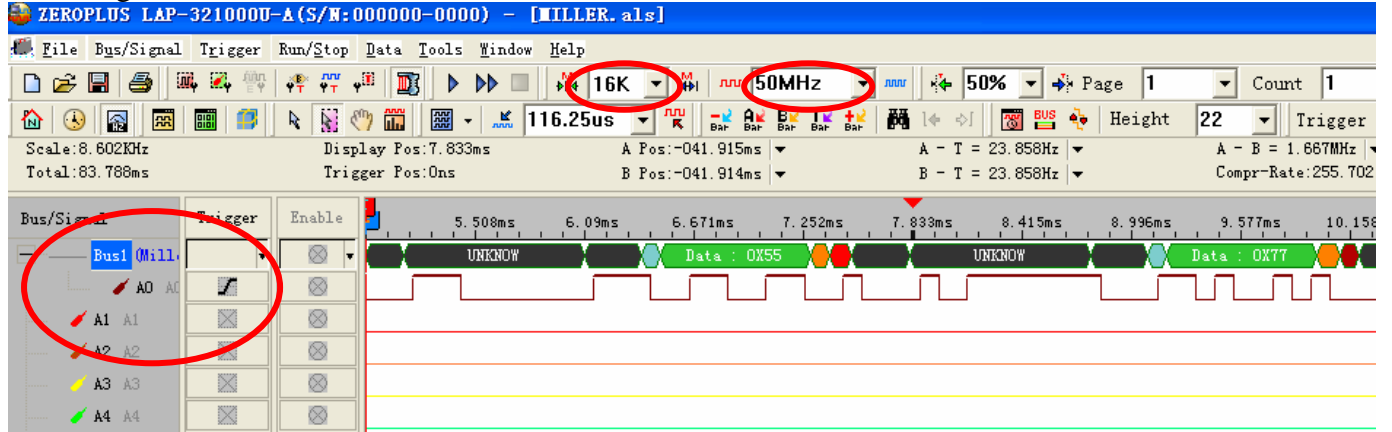


STEP 6. Next, setting “Inaccuracy Rate”.



STEP 7. Following picture shows that the completion of bus decoding. The conditions are set as that trigger at rising edge, Memory depth is 16K, Sampling Frequency is 50MHz and the compression is activated.

Decoding bus



Package list

