



孕龍科技股份有限公司
ZEROPLUS TECHNOLOGY CO.,LTD

Instrument Business Department

LPC(low pin count) Specification

Version: V1.02

Content

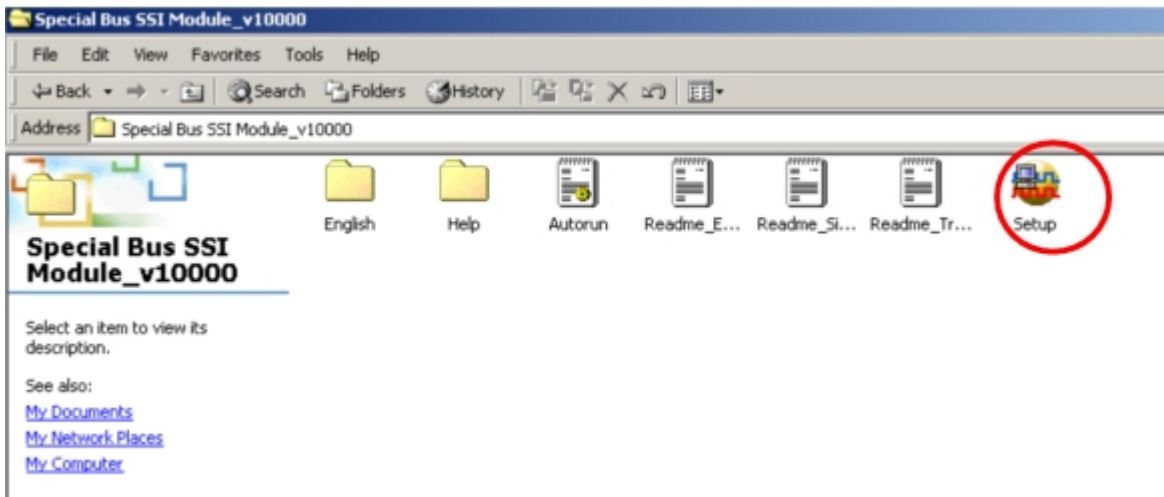
1	Software Installation.....	2
2	User Interface	8
3	Operating Instructions.....	10

1 Software Installation

Please install software by the following steps.

- ❖ Notice: The installed steps to set up all buses are the same; you can complete installation by following procedures. Below images are examples to install SSI bus.

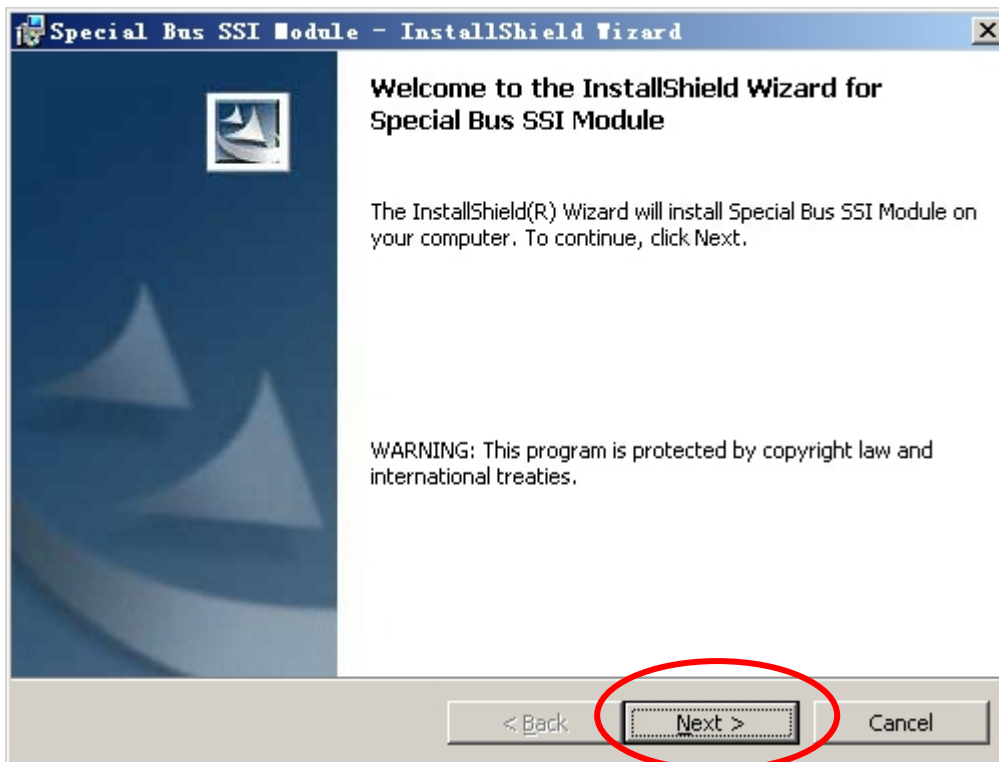
STEP 1. Install LPC Bus Module.



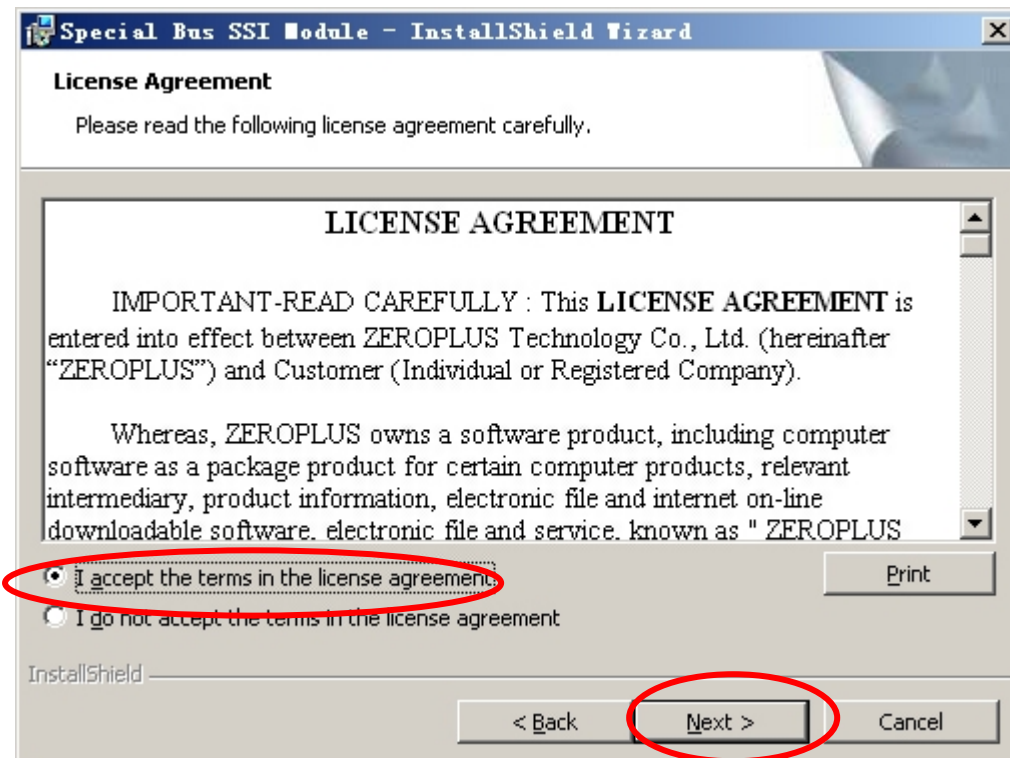
STEP 2. Click “Install”



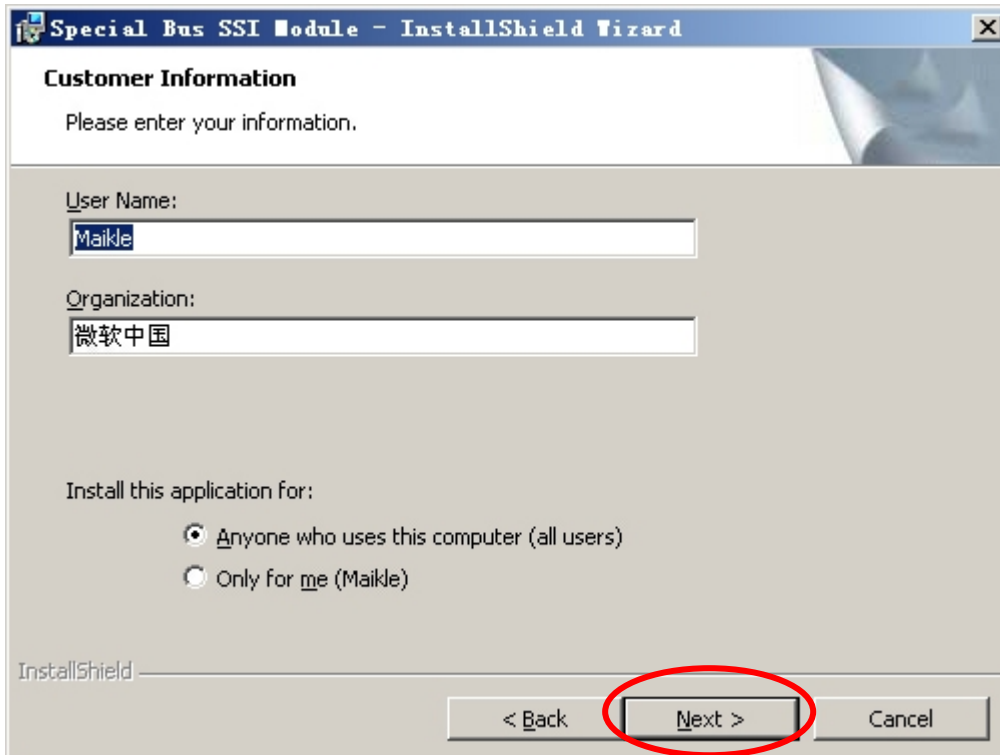
STEP 3. Click “Next”



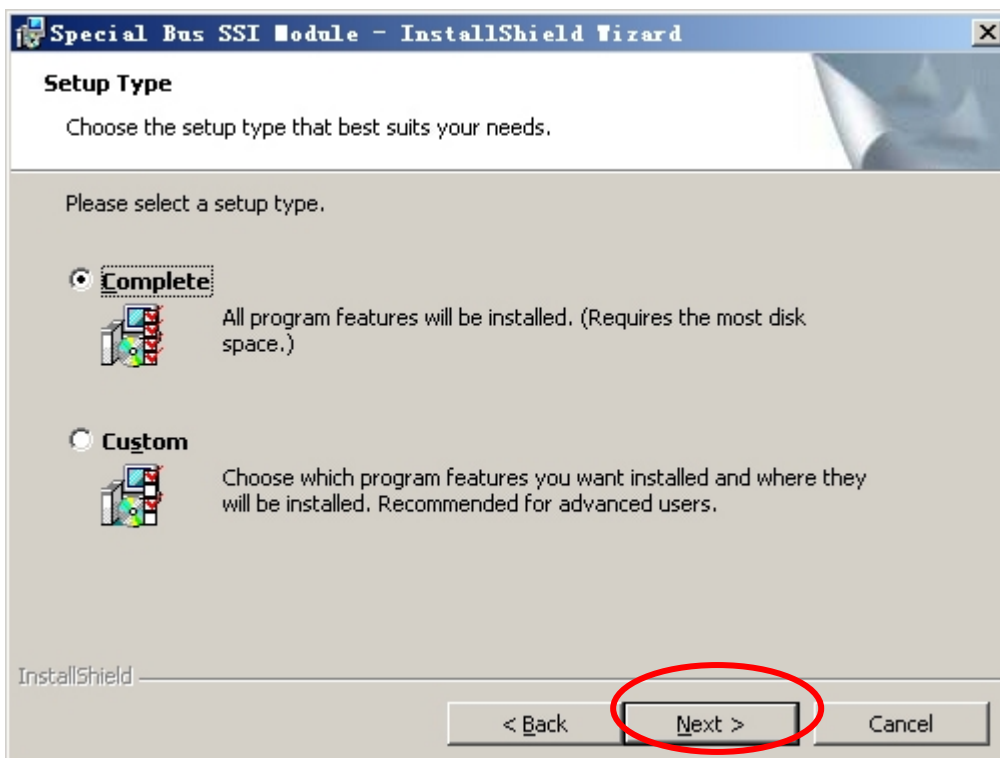
STEP 4. Select “I accept the terms in the license agreement”, and then Click “Next”



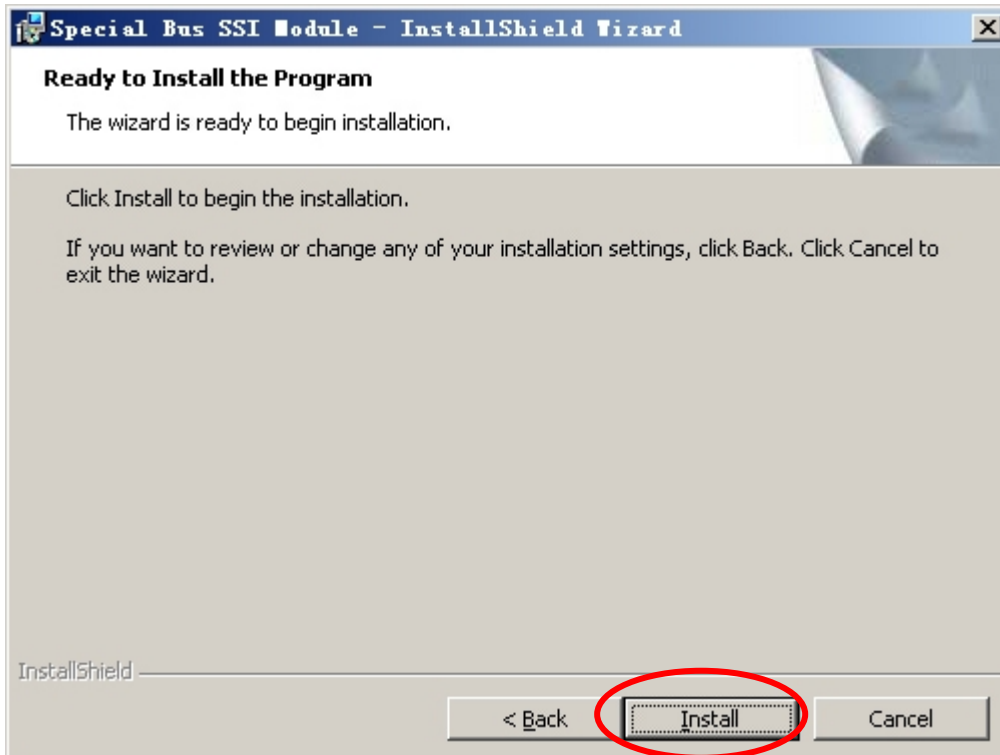
STEP 5. Fill in user Information, and then Click “Next”



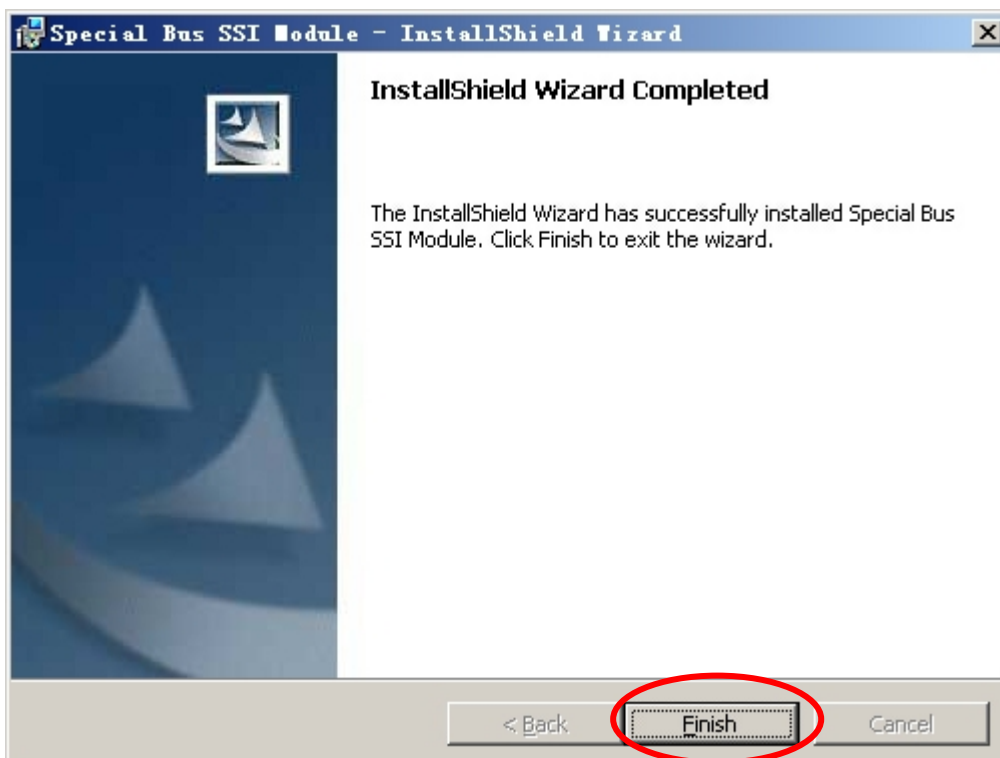
STEP 6. Select “Complete” option, and then click “Next”



STEP 7. Click **Install** to begin the Installation Program



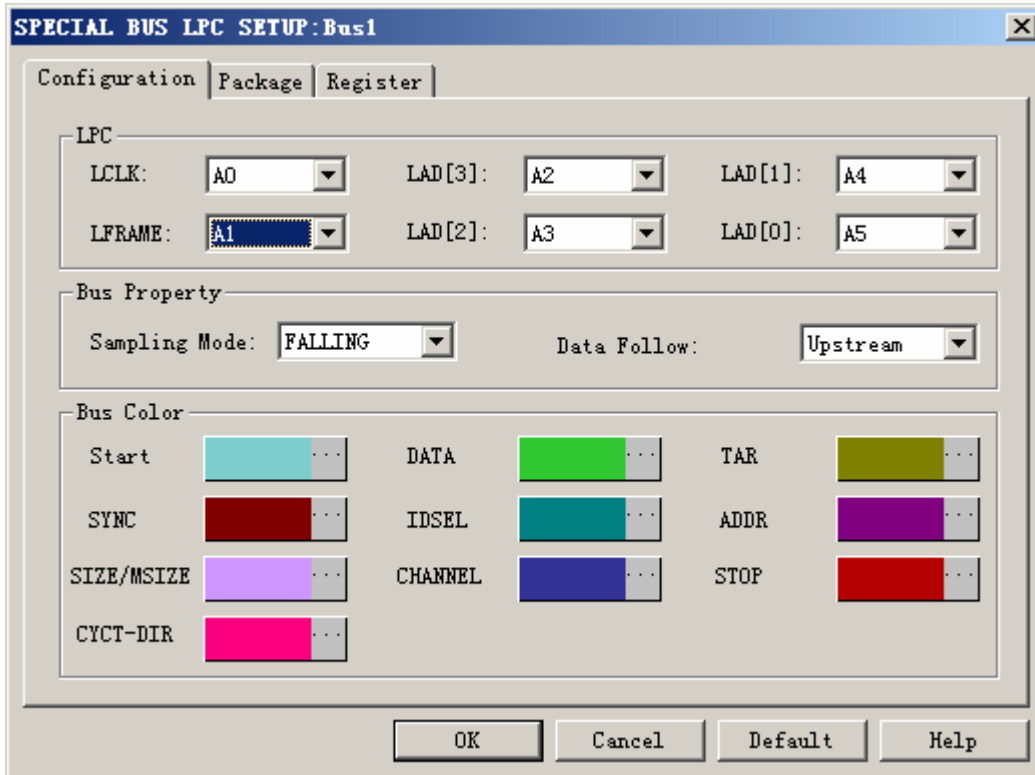
STEP 8. Click **“Finish”** to complete the installation



2 User Interface

In the configuration, please refer to image below to select options of setting LPC.

LPC Setup Dialog Box



LPC:

LCLK: It is a clock channel and , its frequency is 33MHZ. The default is A0.

LFRAME: It is Start/Stop channel and its default is as A1

LAD[3]: The highest bit of data signal and its default is A2.

LAD[2]: B2 bit of the data signal and its default is A3.

LAD[1]: B2 bit of the data signal and its default is A4.

LAD[0]: B2 bit of the data signal and its default is A5.

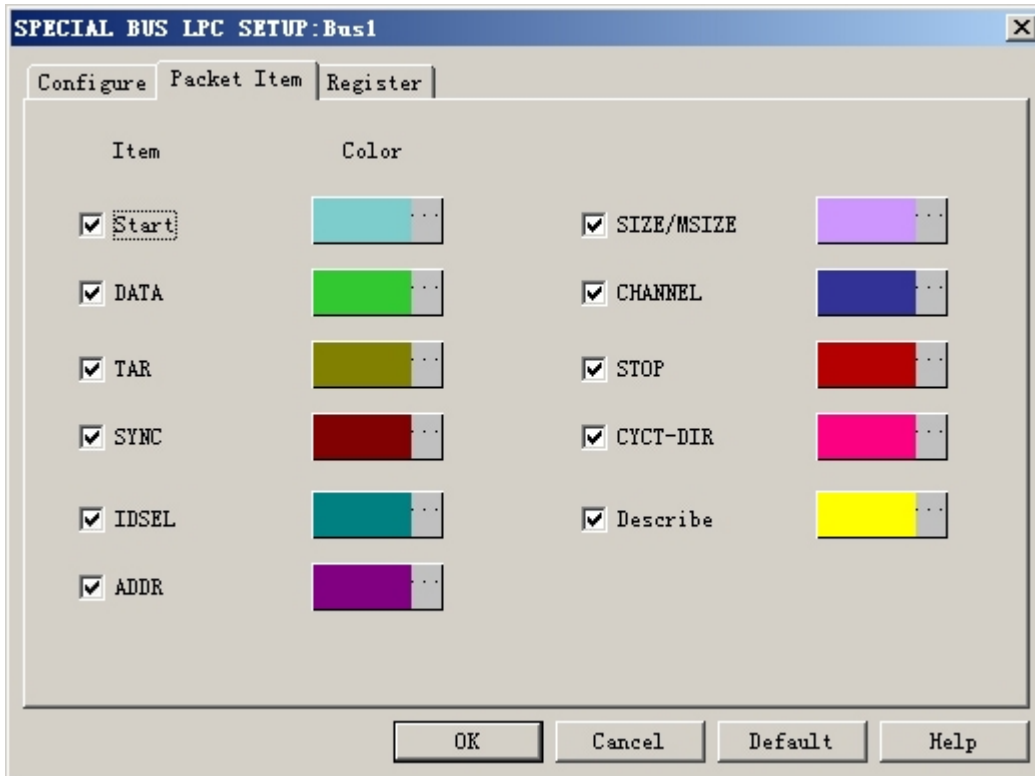
Bus Property:

Sampling Mode: Two options are listed, falling and rising. The default is Falling.

Data Follow:

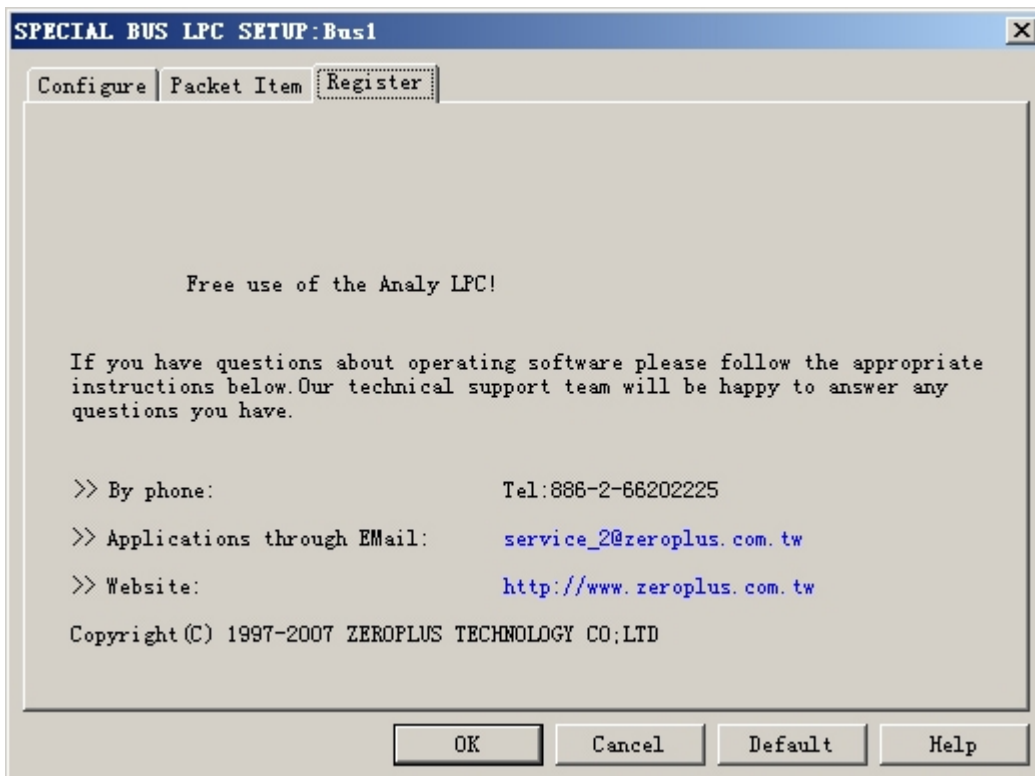
Two directions are listed, Downstream and Upstream. The default is Upstream.

LPC Packet Dialog Box



Package colors can be varied by user.

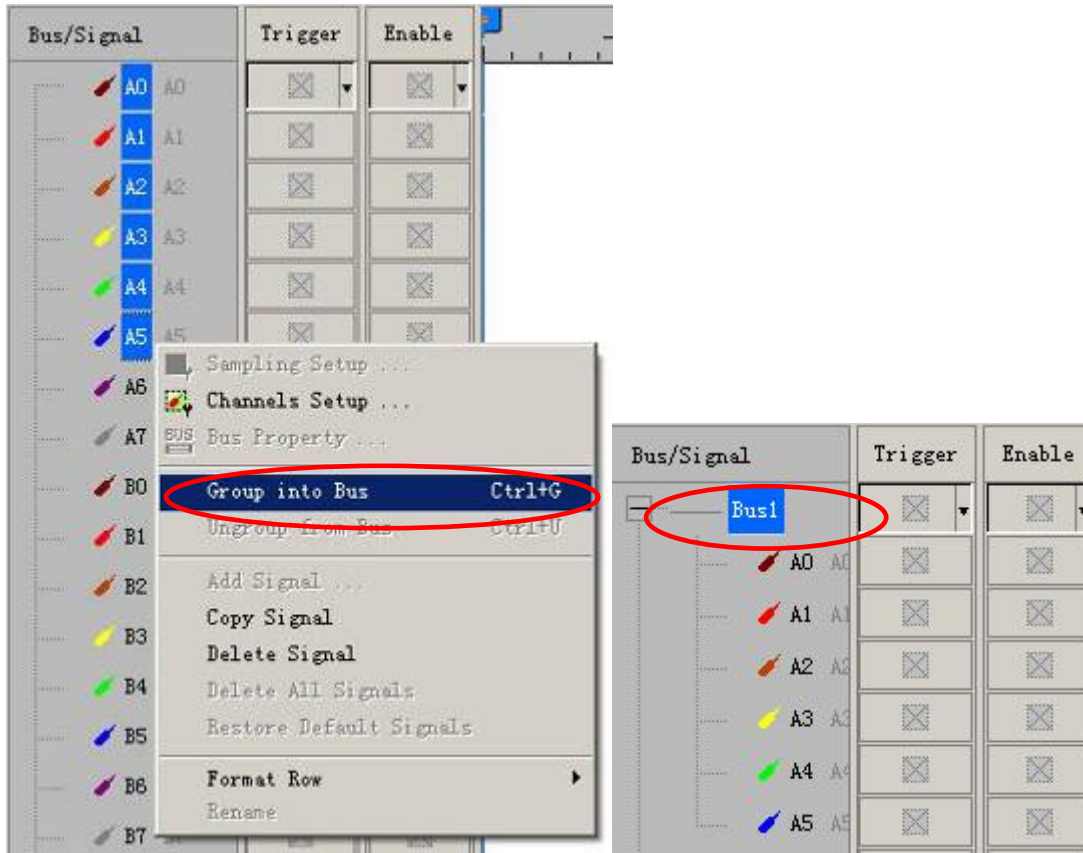
LPC Register Dialog Box



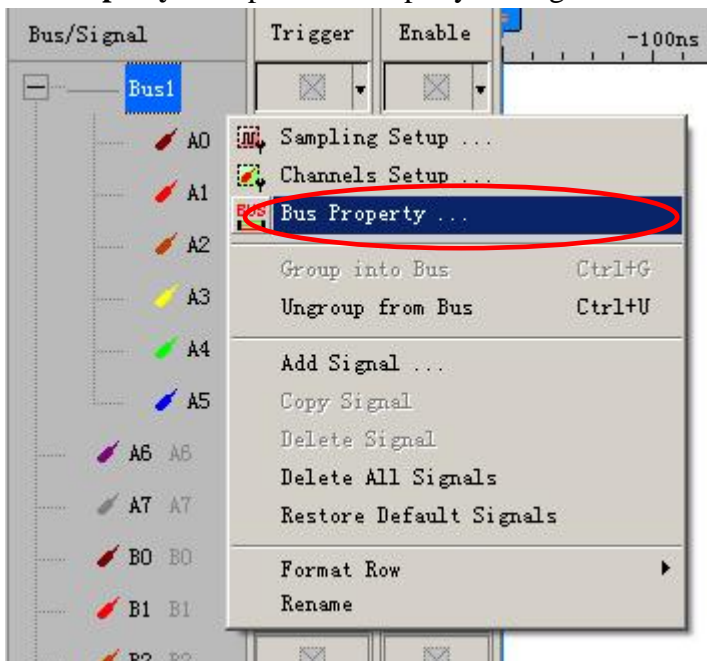
There is Zeroplus company information written. If users have question about software operations, please contact Zeroplus by Telephone or Email.

3 Operating Instructions

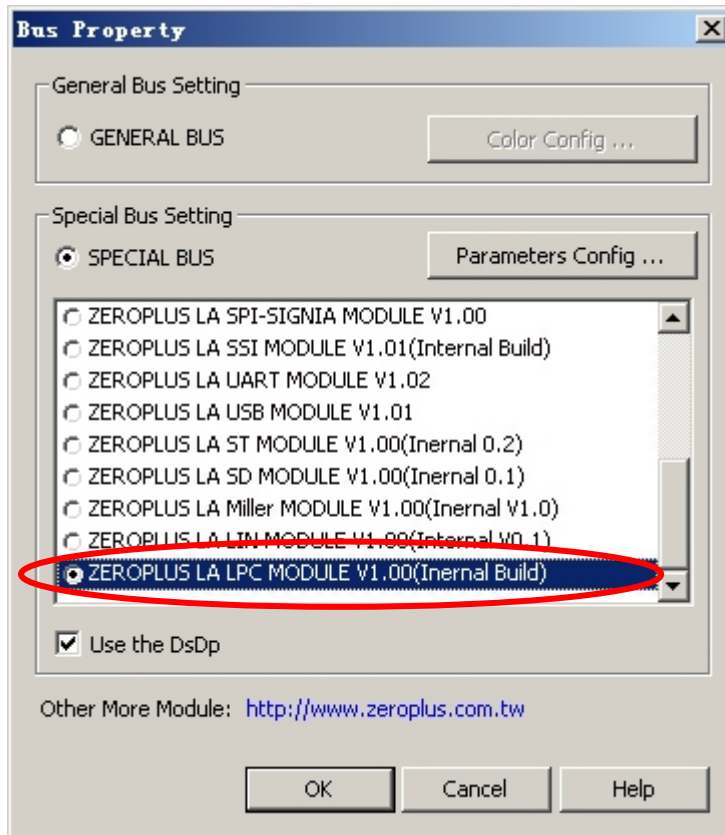
STEP 1. At first, group the unanalyzed channels into bus1.



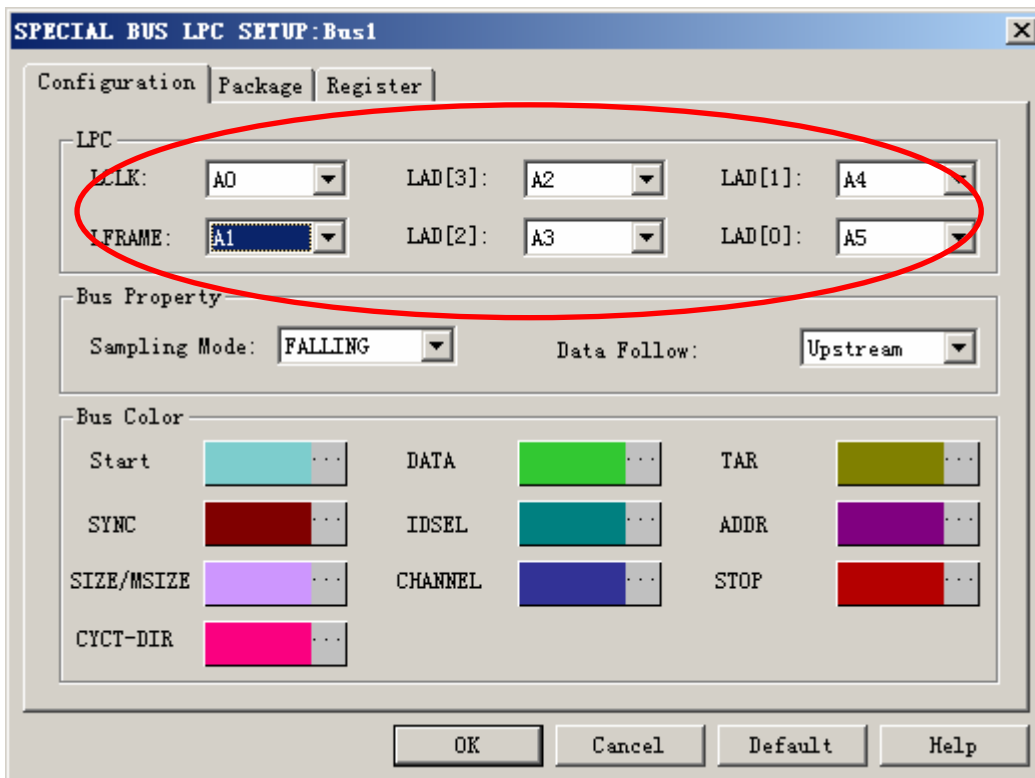
STEP 2. Select **Bus1**,and then press the **Right Key** on the mouse to list menu, next click “**Bus Property**” to open Bus Property Dialog Box



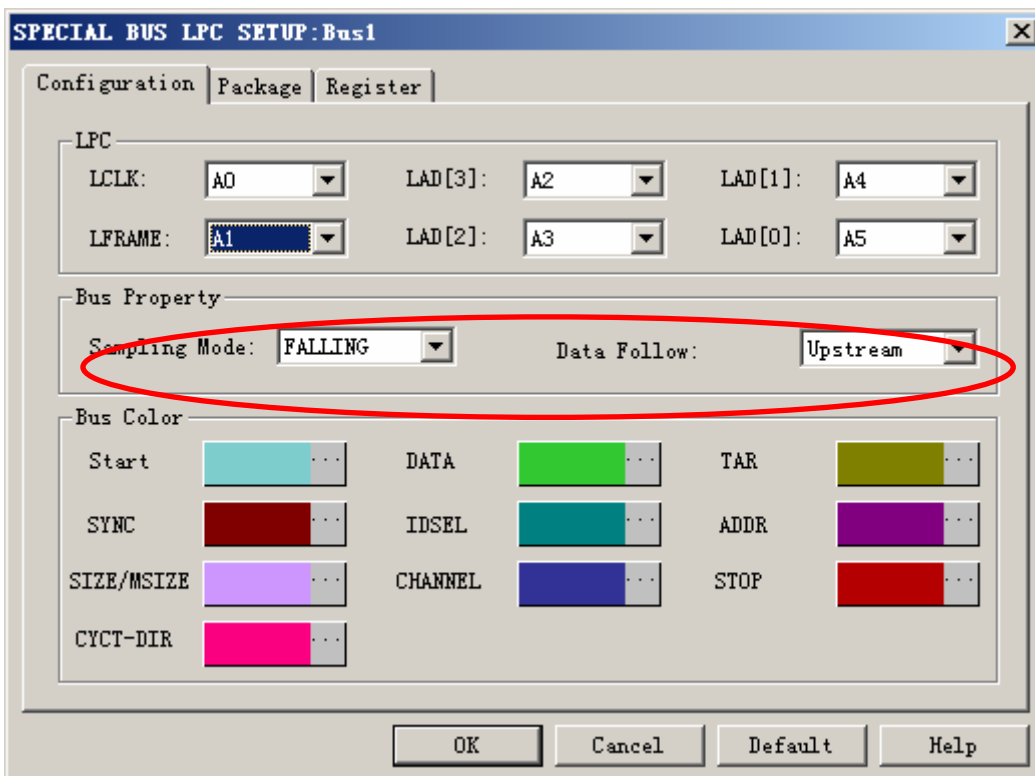
STEP 3. For Special Bus Parameter Configuration, select Special Bus. Then, choose **ZEROPLUS LA LPC V1.00 (Internal Build)**. Next click “**Parameters Configuration**” to open the configure dialogue box.



STEP 4. Setting for Bus 1



STEP 5. For “Bus Property”, choose Sampling Mode either falling or rising. Then, choose the Data Follow or remain its default Upstream.



Following picture shows that the completion of bus decoding. The conditions are set as that Sampling mode is Rising, Memory depth is 32KB and Sampling Frequency is 200MHz and the compression is activated.



Following picture shows the package list and waveforms displaying.

