



**孕龍科技股份有限公司**  
**Zeroplus Technology Co., Ltd.**

**Instrument Business Department**

**LCD 12864 Specification**

Version : V1.02



# Content

<b>1</b>	<b>Software Installation .....</b>	<b>3</b>
<b>2</b>	<b>User Interface .....</b>	<b>7</b>
<b>3</b>	<b>Operating Instructions.....</b>	<b>9</b>

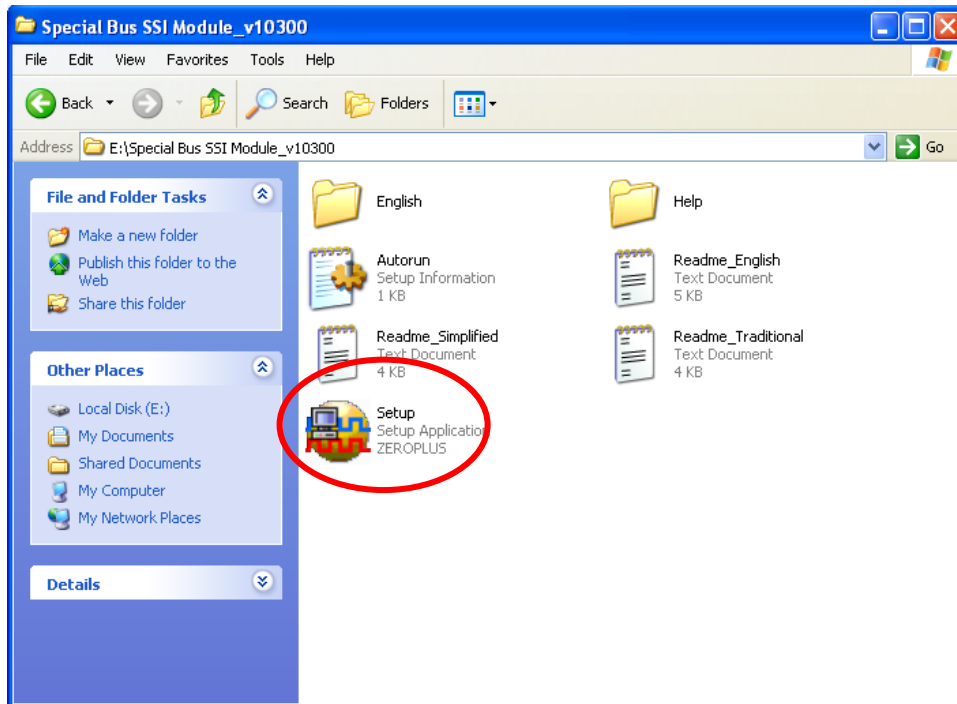


# 1 Software Installation

Please install the software as the following steps:

- ※ Remark: 1. The installation steps for all Buses are the same; you can complete the installation by following procedures. The following is an example on how to install SSI Bus.
- ※ Remark: 2. We haven't additional notice for you, when there is any modification of the module specification. If there is some unconformity caused by module version upgrade, users should take the module software as the standard.

## STEP 1. Install Bus Module

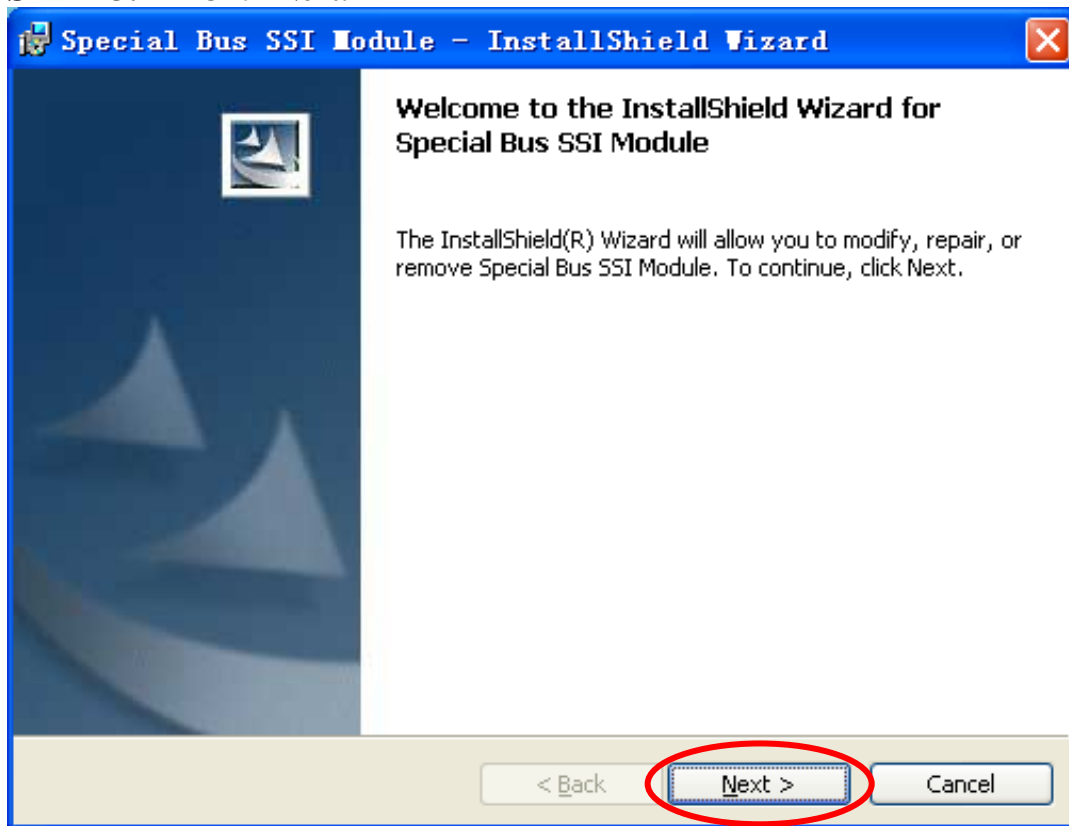


## STEP 2. Click Install.

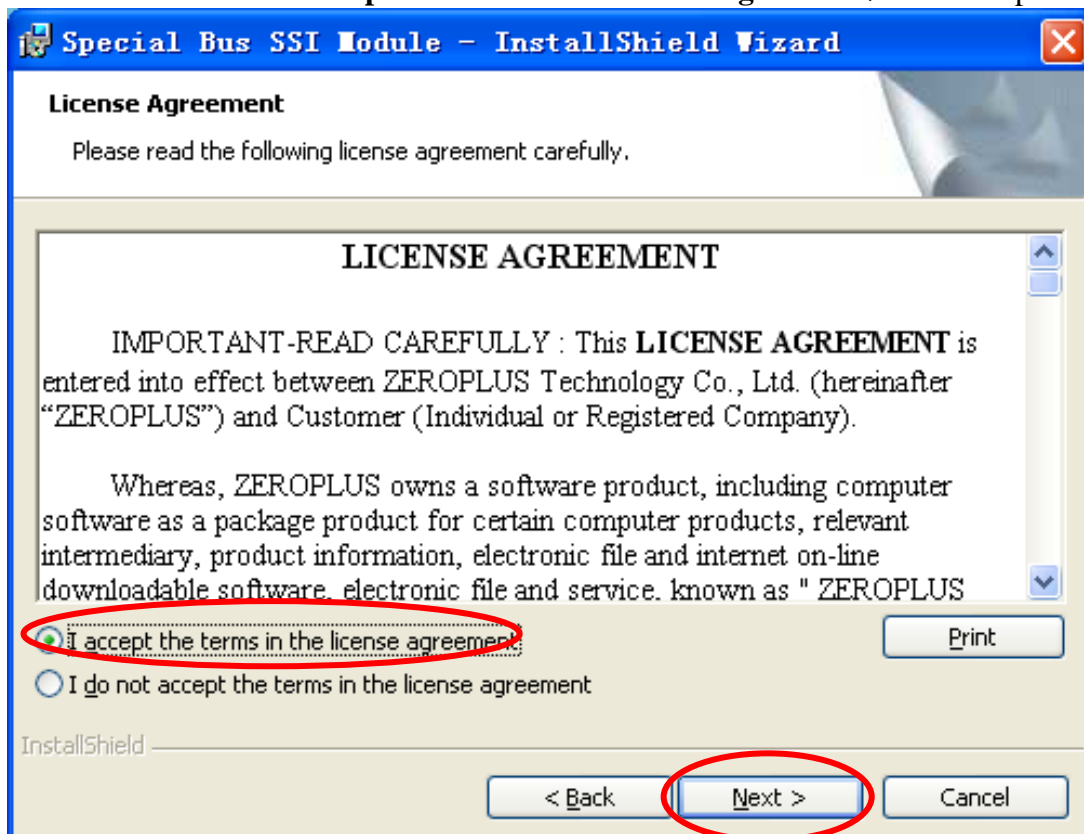




**STEP 3.** Click Next.

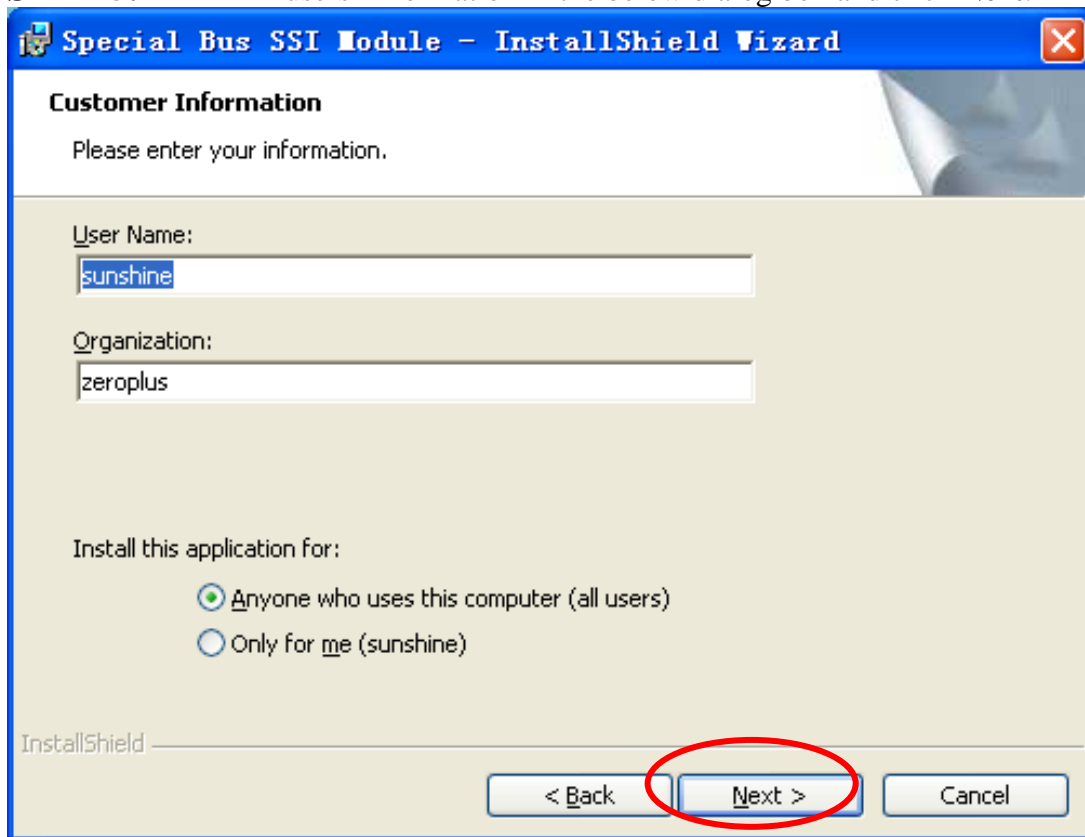


**STEP 4.** Select **I accept the terms in the license agreement**, and then press Next.

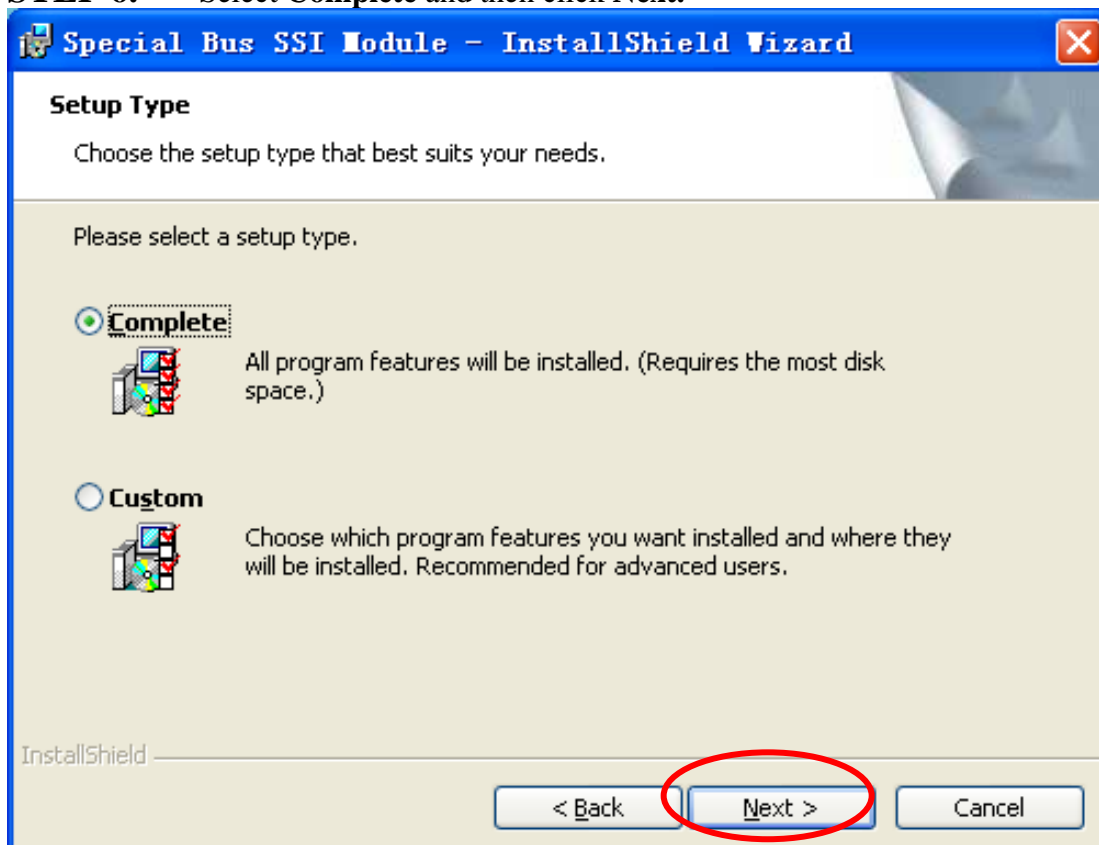




**STEP 5.** Fill in users' information in the below dialog box and click **Next**.

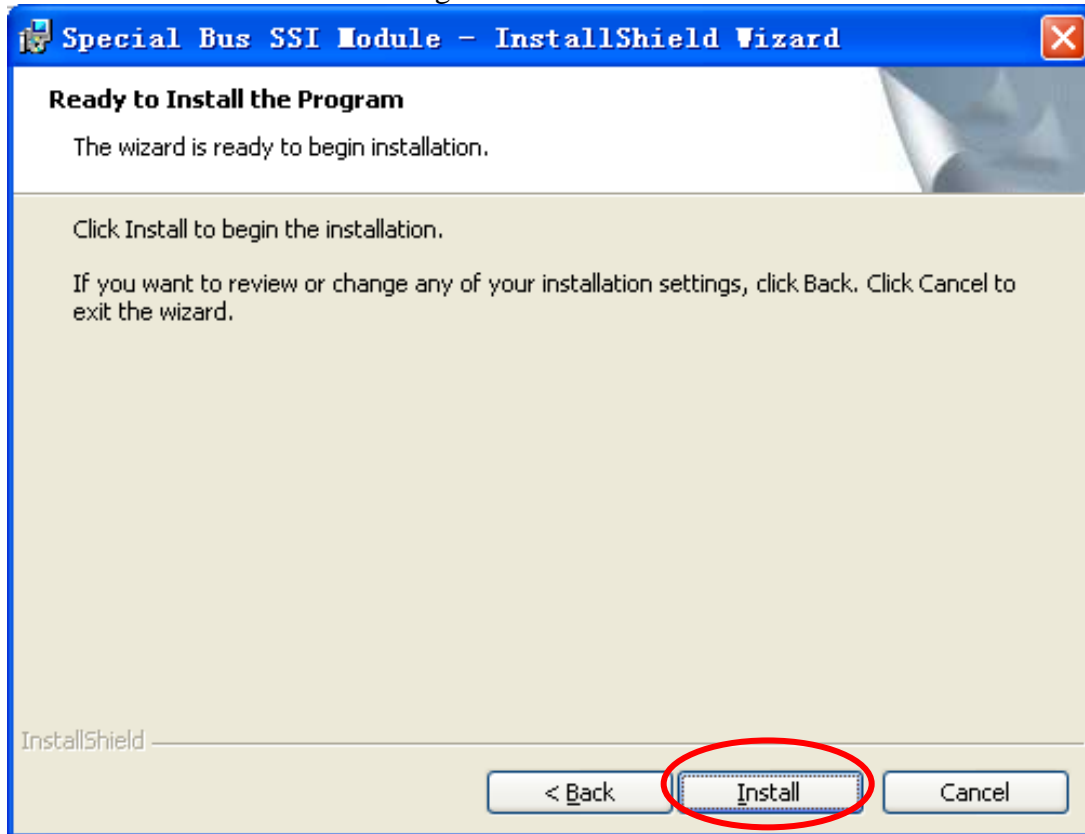


**STEP 6.** Select **Complete** and then click **Next**.

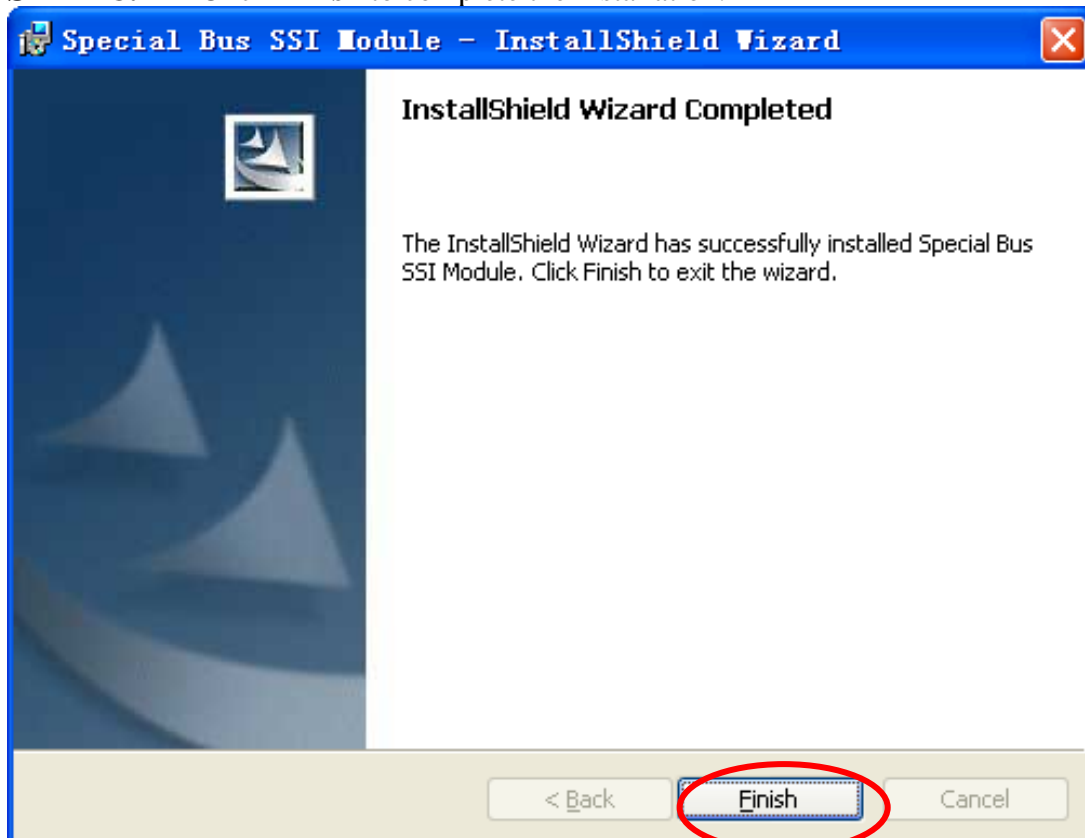




**STEP 7.** Click **Install** to begin the installation.



**STEP 8.** Click **Finish** to complete the installation.

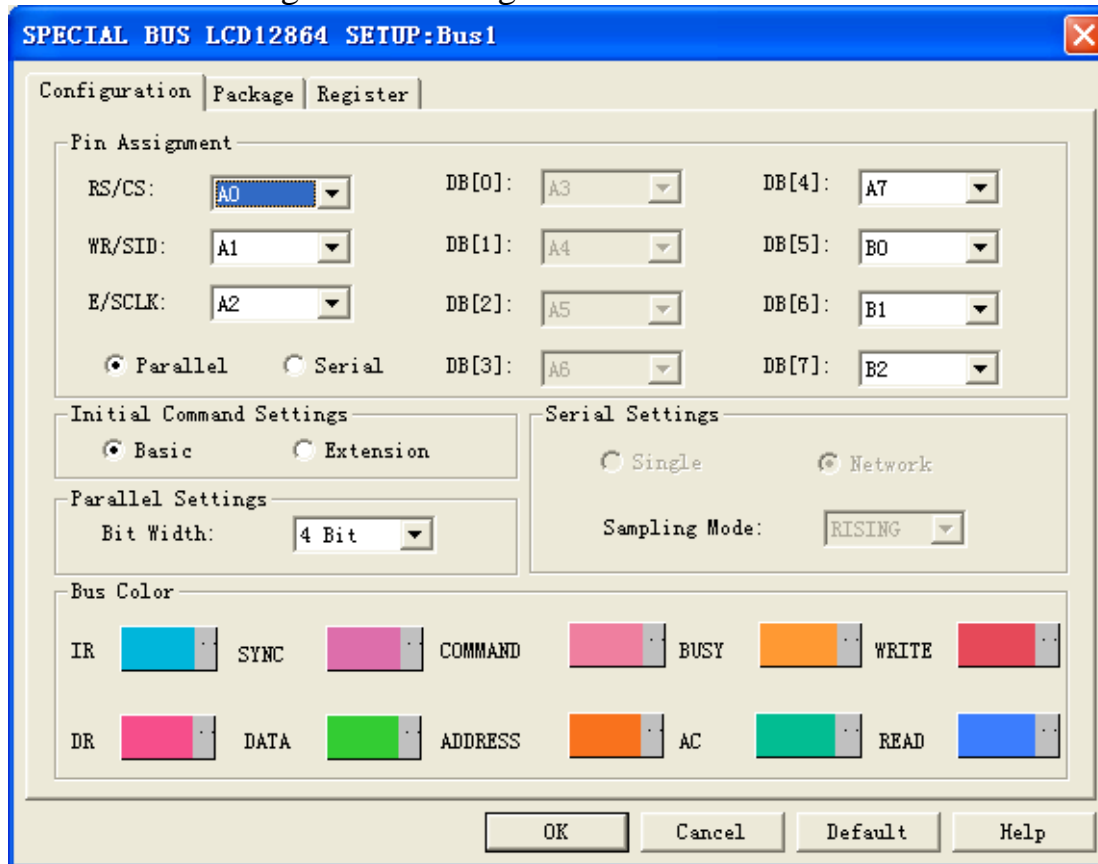




## 2 User Interface

Please refer to the below images to select options of setting LCD12864 module.

### LCD 12864 Configuration Dialog Box



**Pin Assignment Settings:** There are two modes for setting the way of signal input, which are Parallel (Parallel signal) and Serial (Serial signal). Hitherto, RS/CS WR/SID E/SCLK DB0~DB7 have the different transmission modes, so they have the different modes of signal setting and the corresponding required signal channels.

**Initial Command Settings:** Select one of the command value from the Basic and Extension modes to set the initial command value.

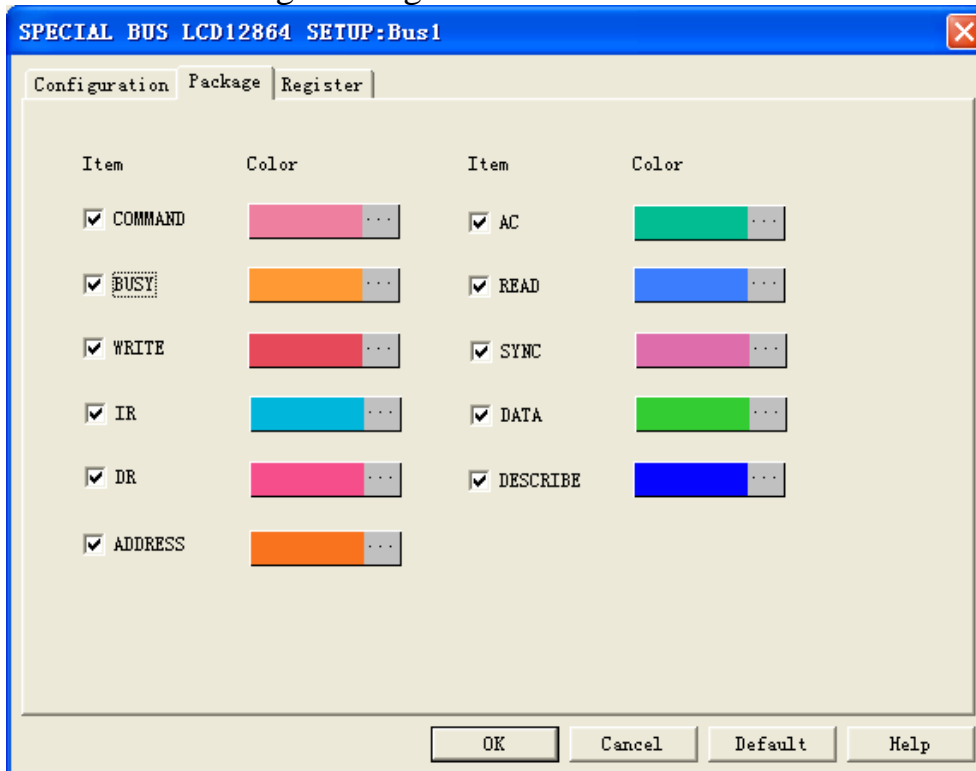
**Parallel Settings:** Select the 8Bit or 4Bit to set the used channel amount of the parallel signal.

**Serial Settings:** Set the decoding mode of Serial (Serial signal) as Single or Network. And the sampling mode is RISING or FALLING.

**Bus Color:** Set the color of the Bus package.

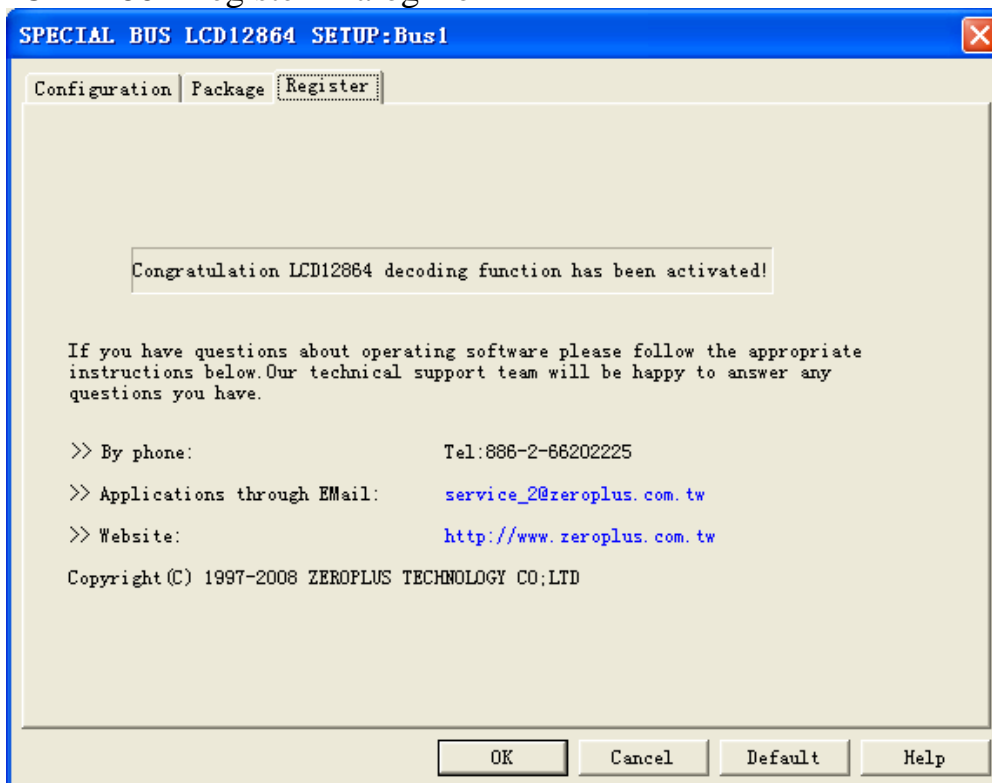


## LCD 12864 Package Dialog Box



In the Package part, users can vary the package color as their requirements and decide whether to show the item in the package list.

## LCD 12864 Register Dialog Box



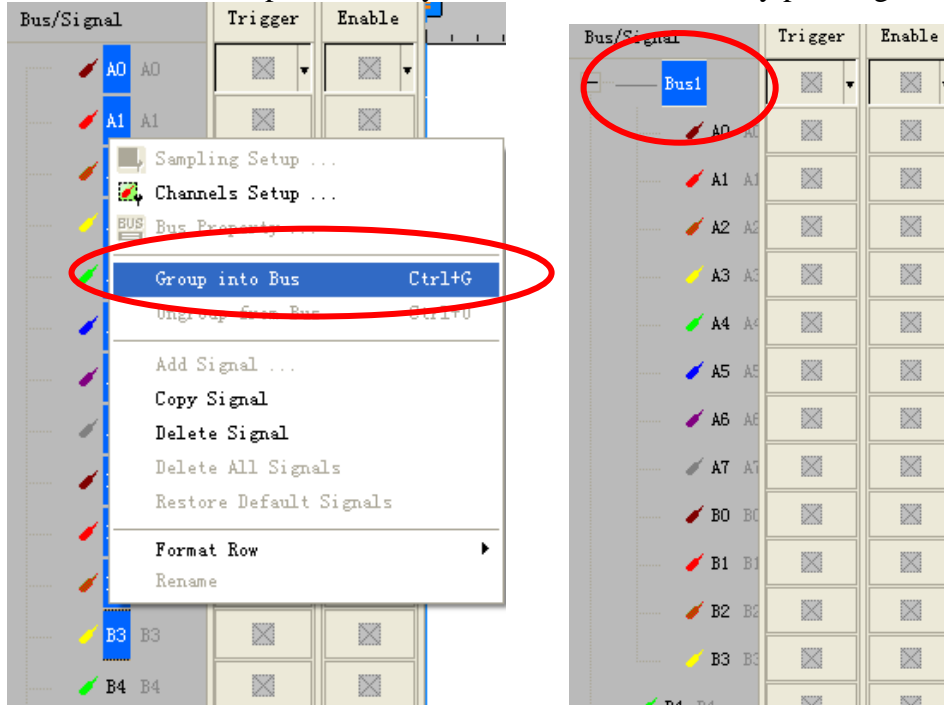
There is ZeroPlus company information. If you have any questions about software operations, you can contact ZeroPlus by Telephone or Email.



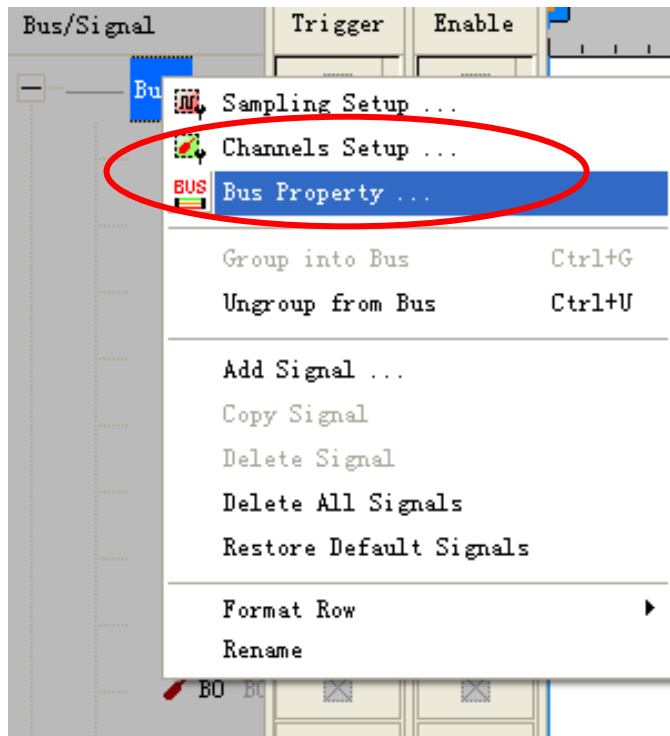


### 3 Operating Instructions

**STEP 1.** Group the unanalyzed channels into **Bus1** by pressing the **Right Key** on the mouse.

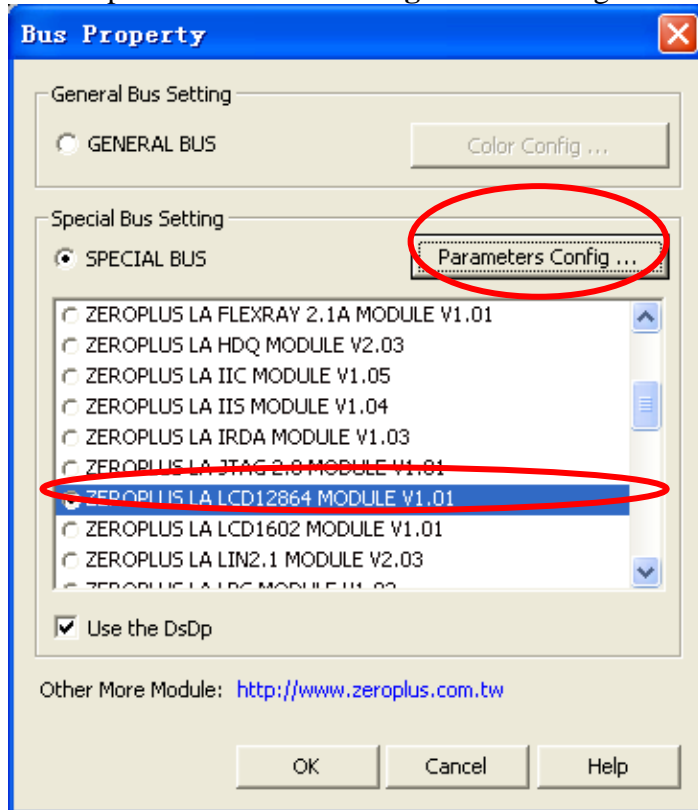


**STEP 2.** Select **Bus1**, then press **Right key** on the mouse to list menu, then press **Bus Property** or **Bus bar** on the toolbar to open **Bus Property** dialog box.

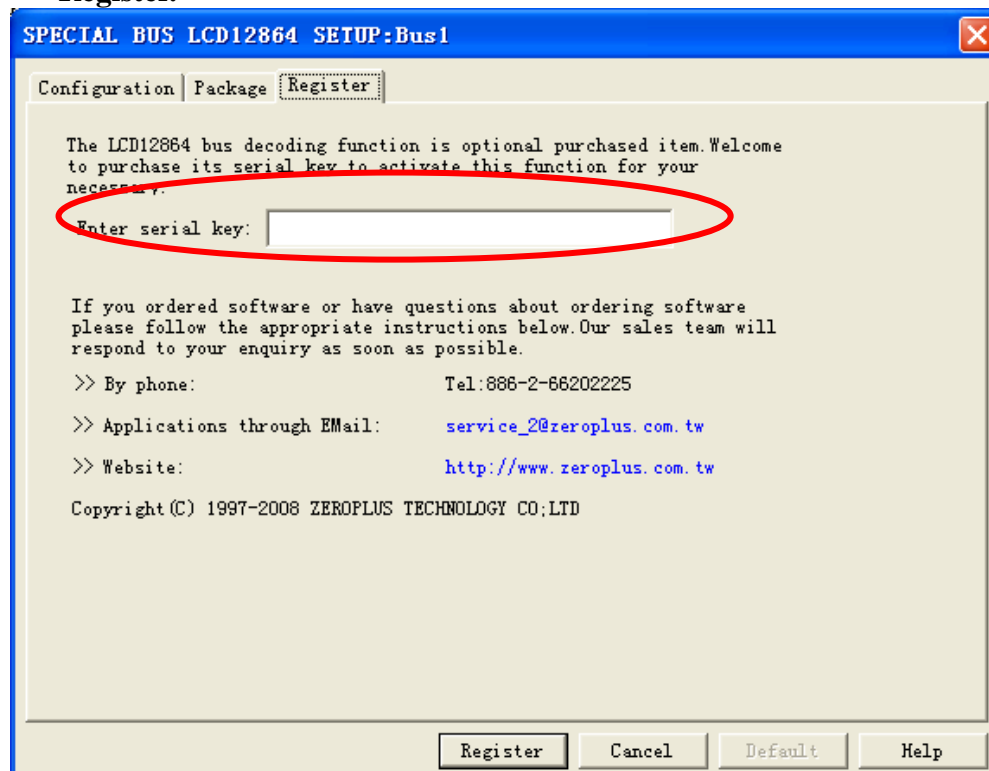




**STEP 3.** For Special Bus LCD12864 Parameters Configuration, select Special Bus, and then choose **ZEROPLUS LA LCD12864 MODULE V1.01**. Next click **Parameters Configuration** to open **Parameters Configuration** dialog box.

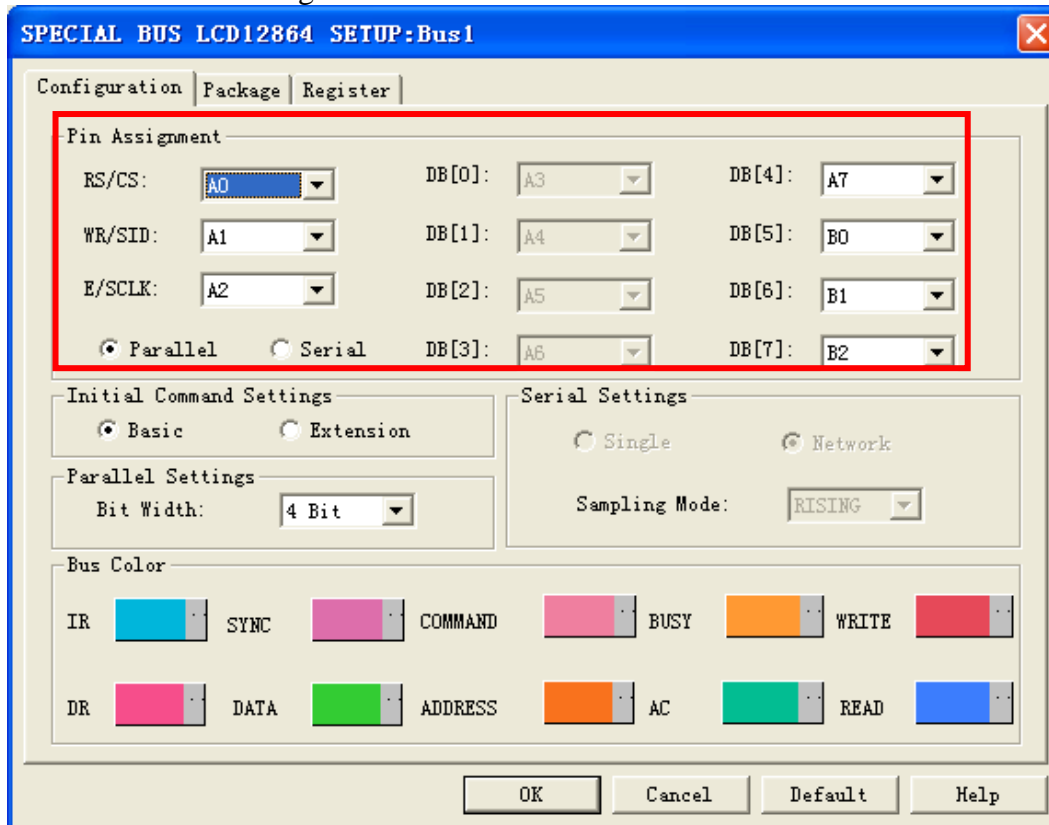


**STEP 4.** Press Register tab to type the serial key number of LCD 12864. Then, press **Register**.

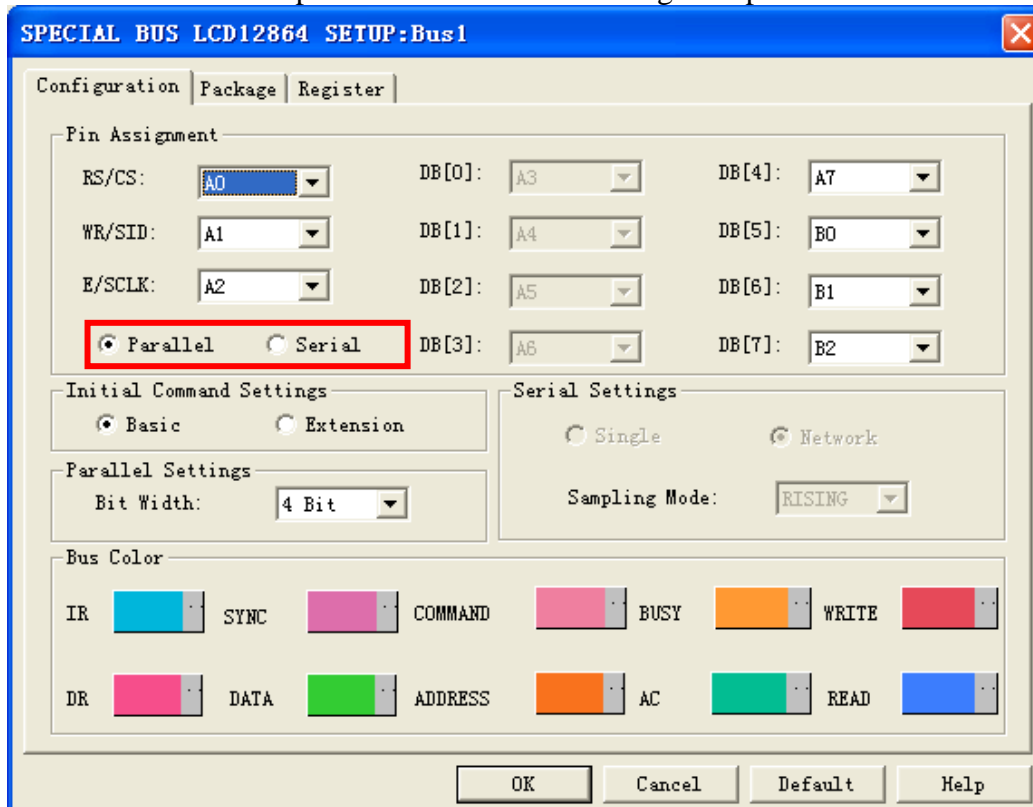




**STEP 5.** Click Configuration to open the configuration dialog box, and then set channels for LCD12864 in Pin Assignment section.

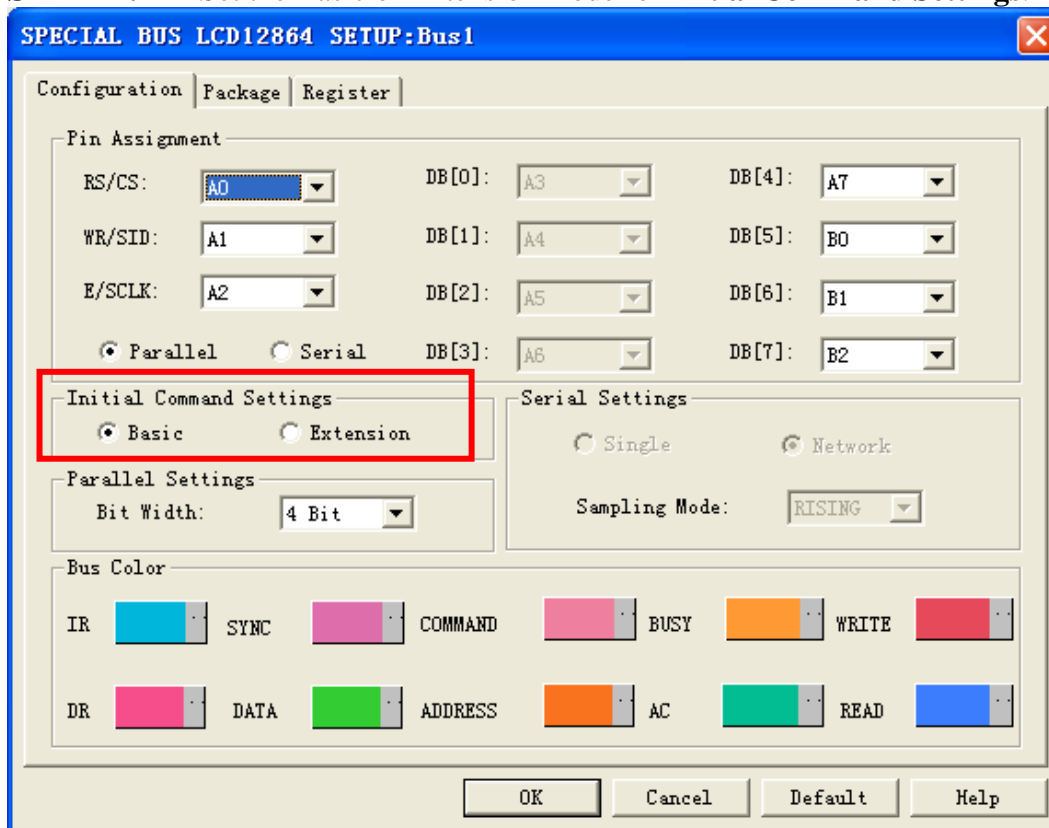


**STEP 6.** Set the parallel or serial mode for signal input mode

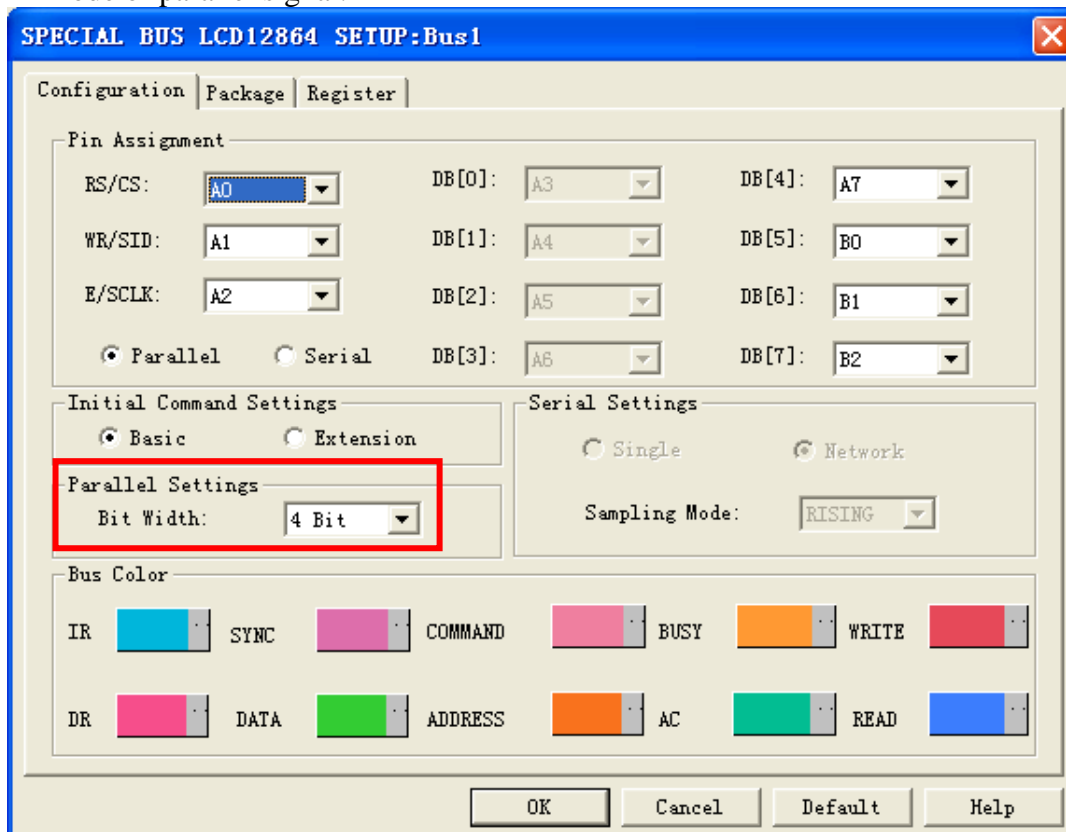




**STEP 7.** Set the Basic or Extension mode for **Initial Command Settings**.

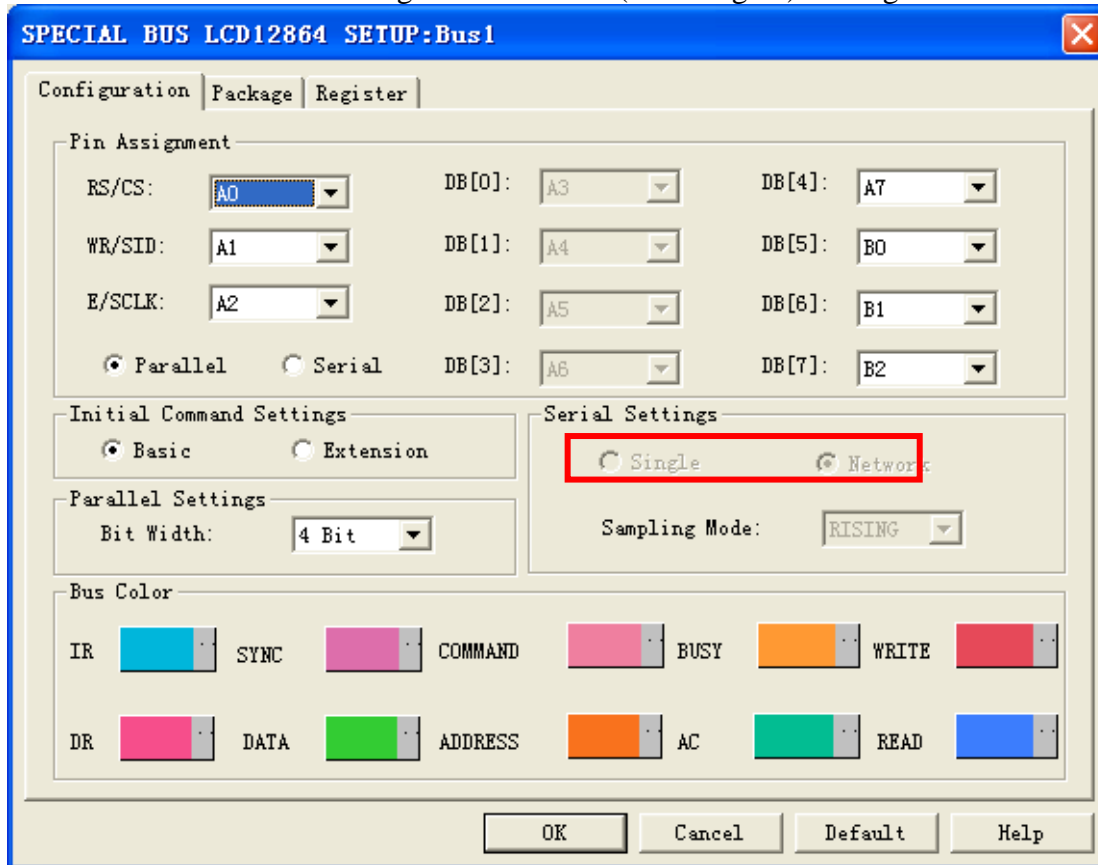


**STEP 8.** The signal line can be set as 8Bit (8-line input) or 4Bit (4-line input) under the input mode of parallel signal.

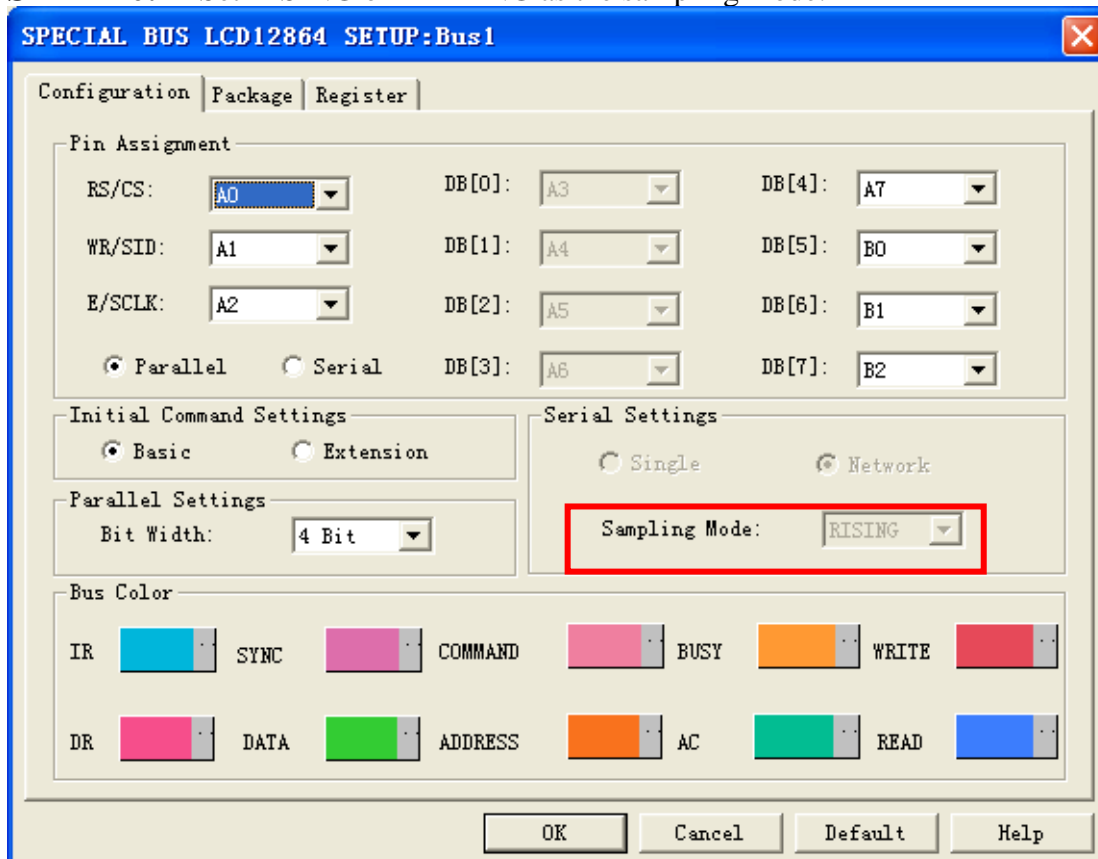




**STEP 9.** Set the decoding mode of Serial (Serial signal) as Single or Network.

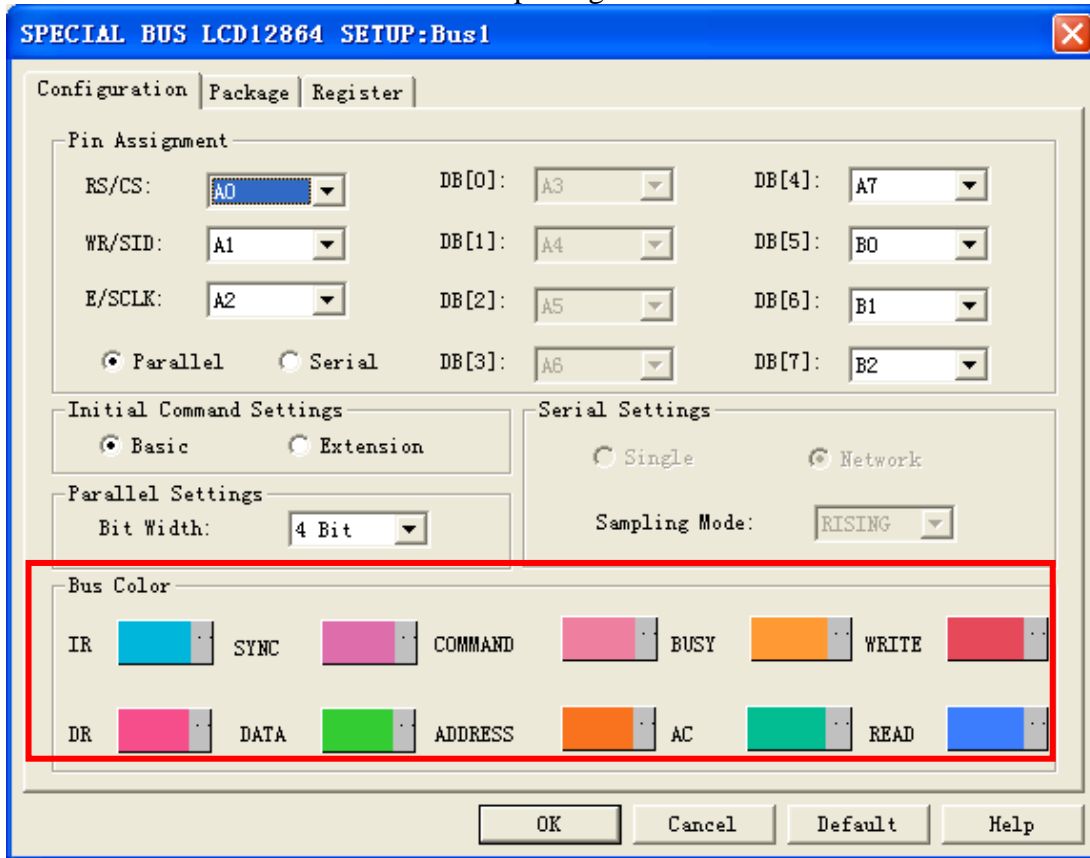


**STEP 10.** Set RISING or FALLING as the sampling mode.

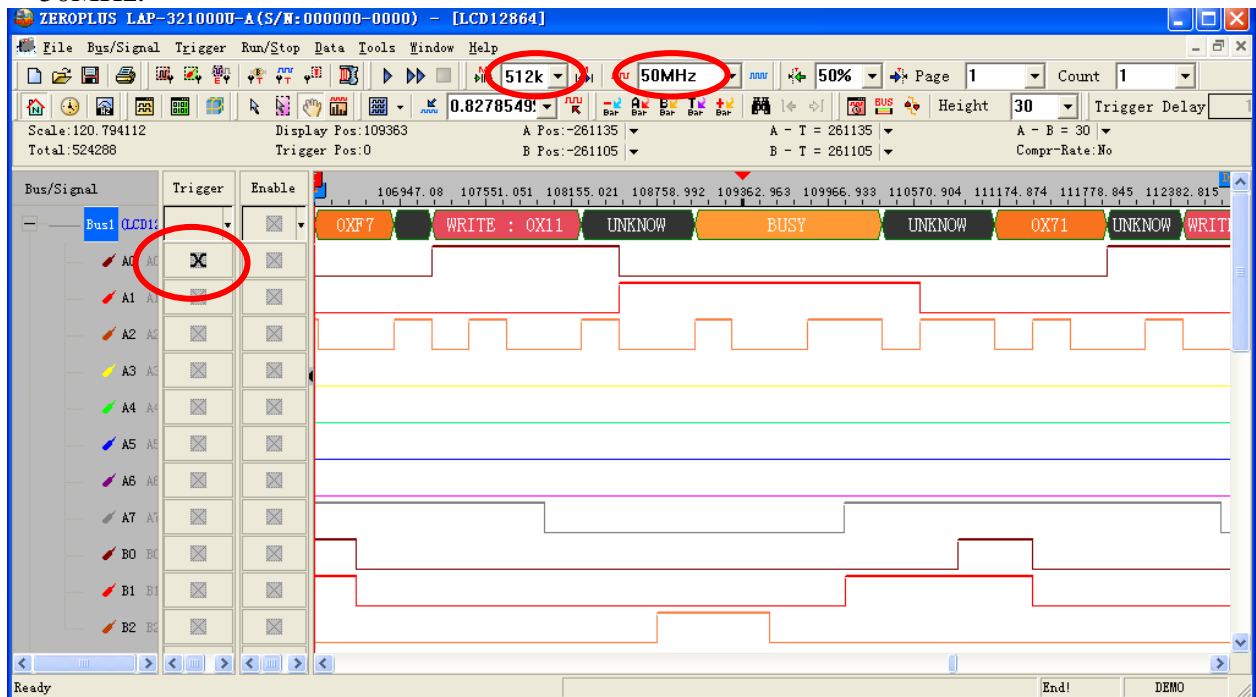




**STEP 11.** Set the color of the Bus package.



**STEP 12.** Following pictures show the completion of the Bus decoding and package list. The Trigger condition is set as Either Edge; the Memory depth is 512K; the Sampling frequency is 50MHz.





Following picture shows the waveform display with the package list.

