



孕龍科技股份有限公司
ZEROPLUS TECHNOLOGY CO.,LTD

Instrument Business Department

IRDA Specification

Version: V1.02

Content

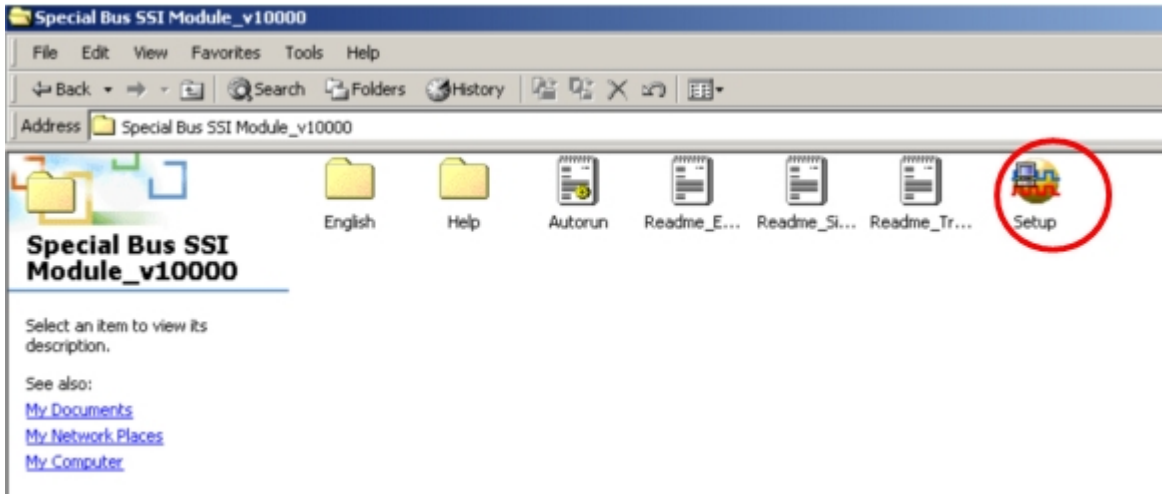
1	Software Installation	3
2	User Interface	7
3	Operating Instructions	9

1 Software Installation

Please setup software according to the following steps.

※ The installed steps to setup all buses are in the same, you can complete installation by following procedures. Below images are examples to install SSI buses

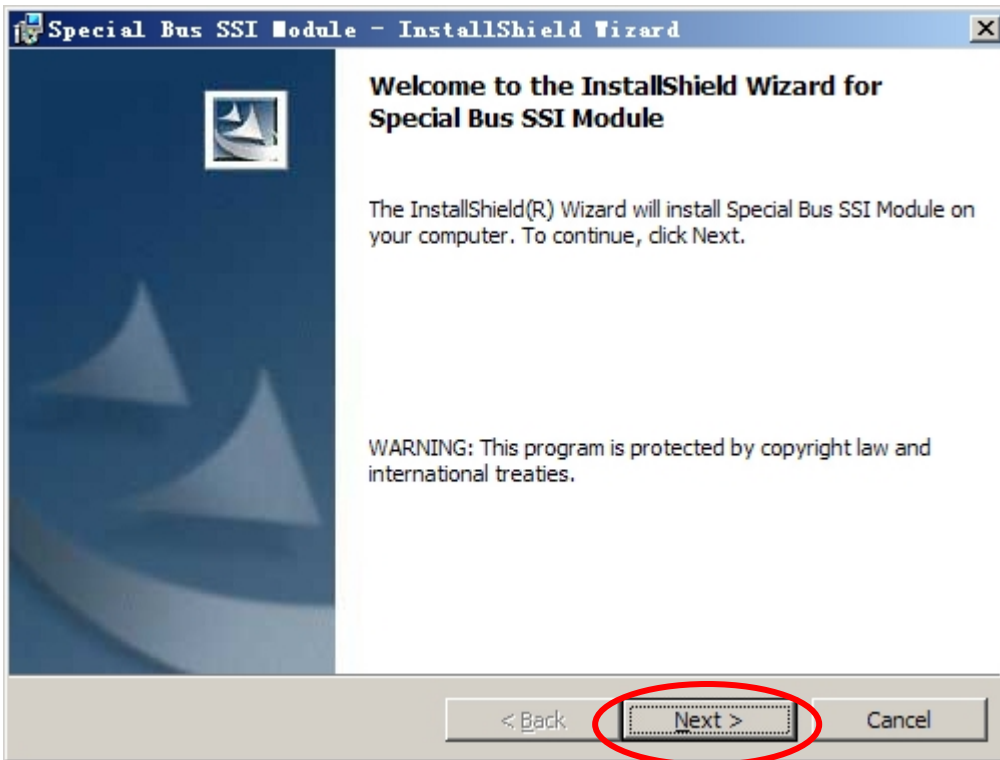
STEP 1. Install Bus Module



STEP 2. Click "Install".



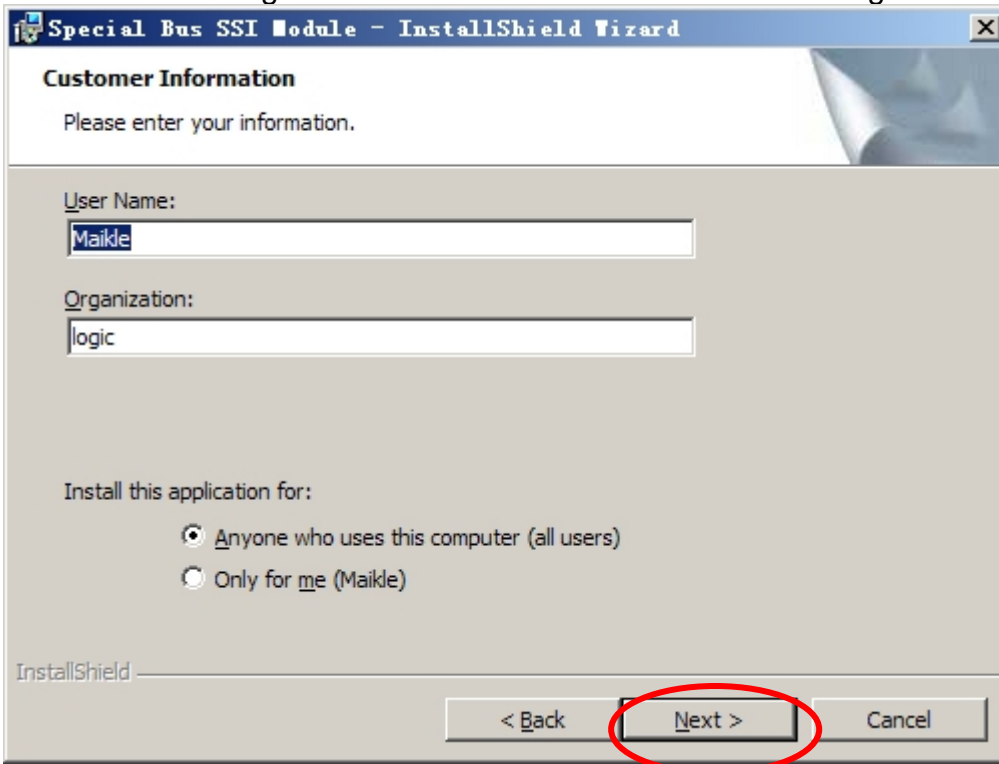
STEP 3. Press “Next”



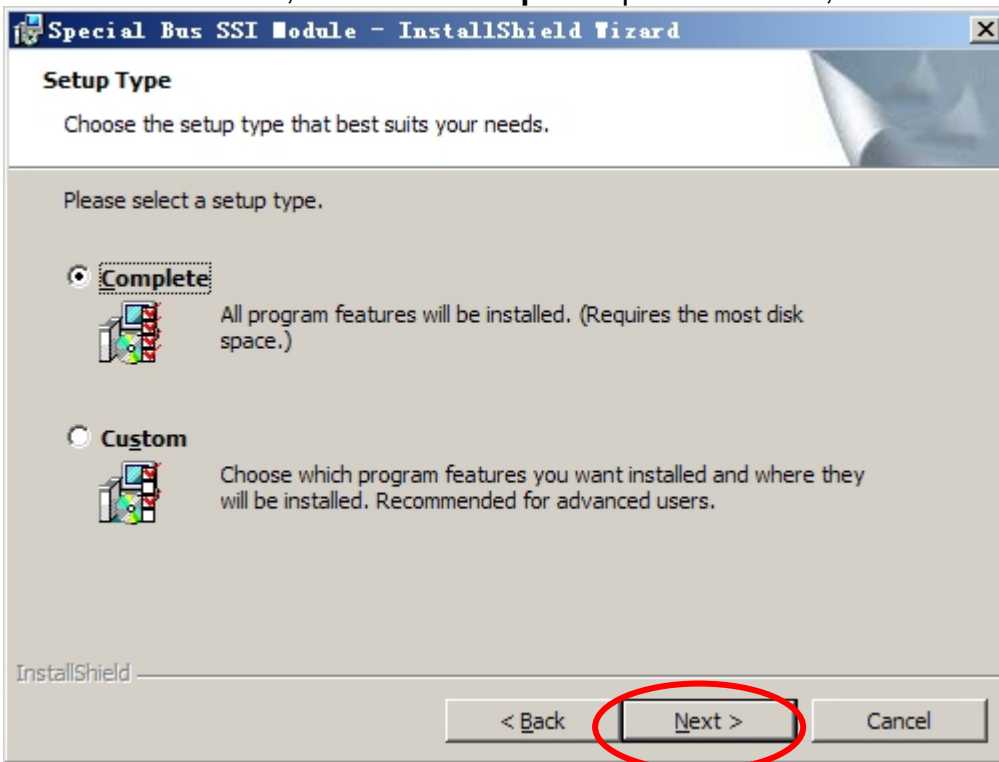
STEP 4. Select “I accept the terms in the license agreement” and then press “Next”.



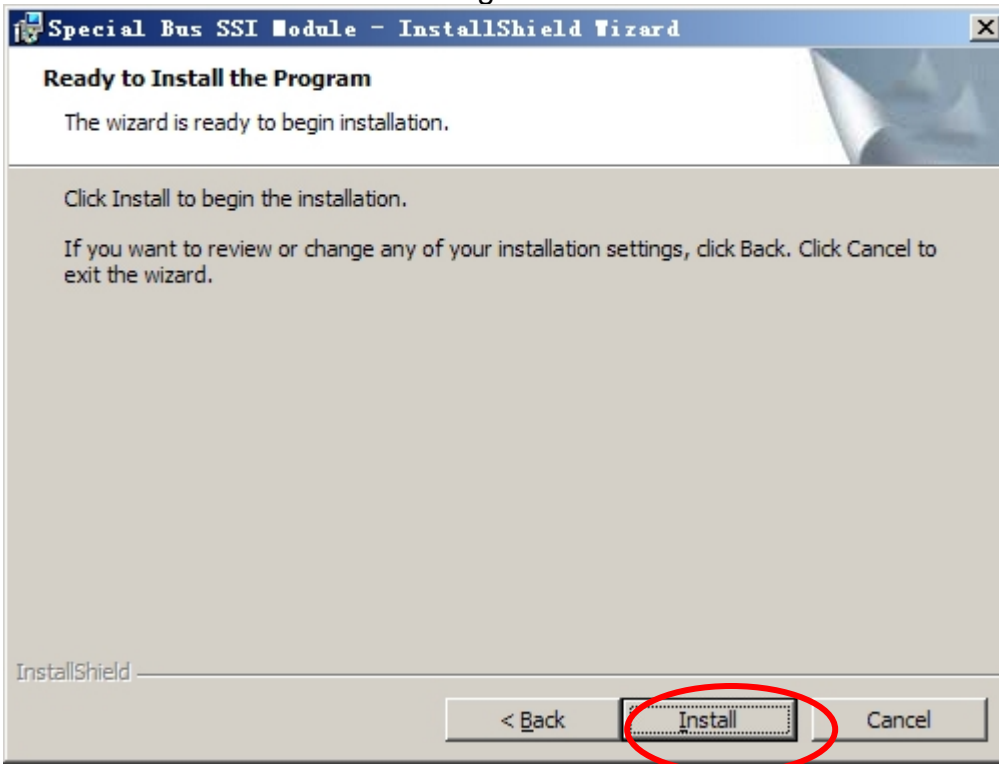
STEP 5. Filling the relative information in the below dialog box and clicking “Next”.



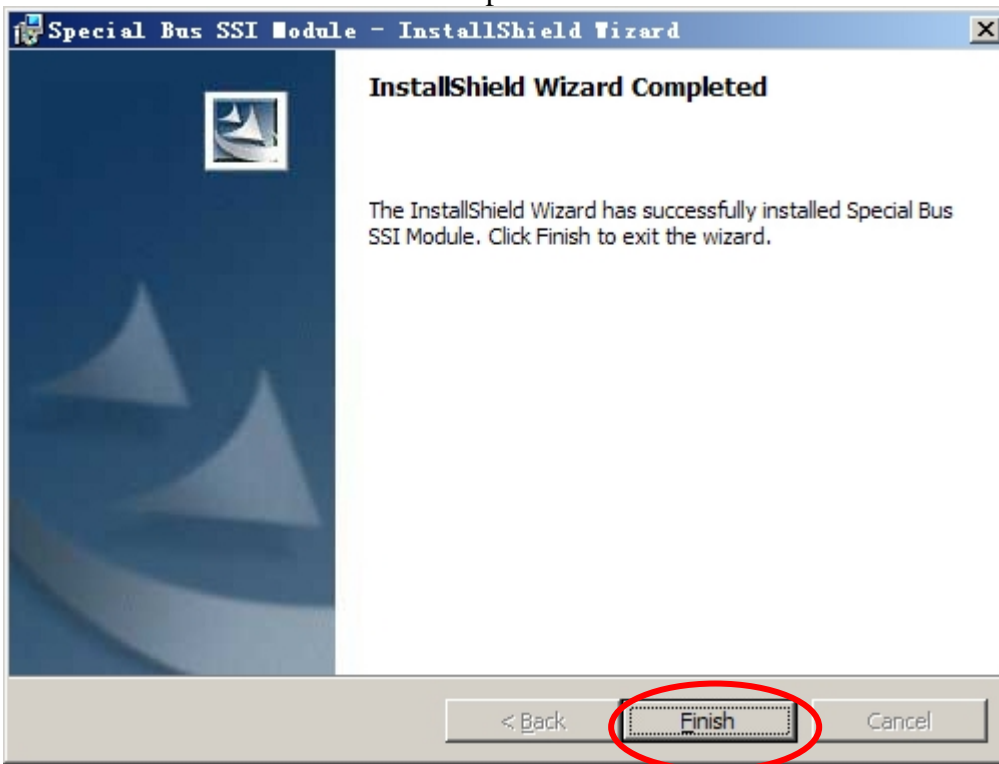
STEP 6. At first, select the **Complete** option and then, click “Next”.



STEP 7. Click “Install” to begin the installation.



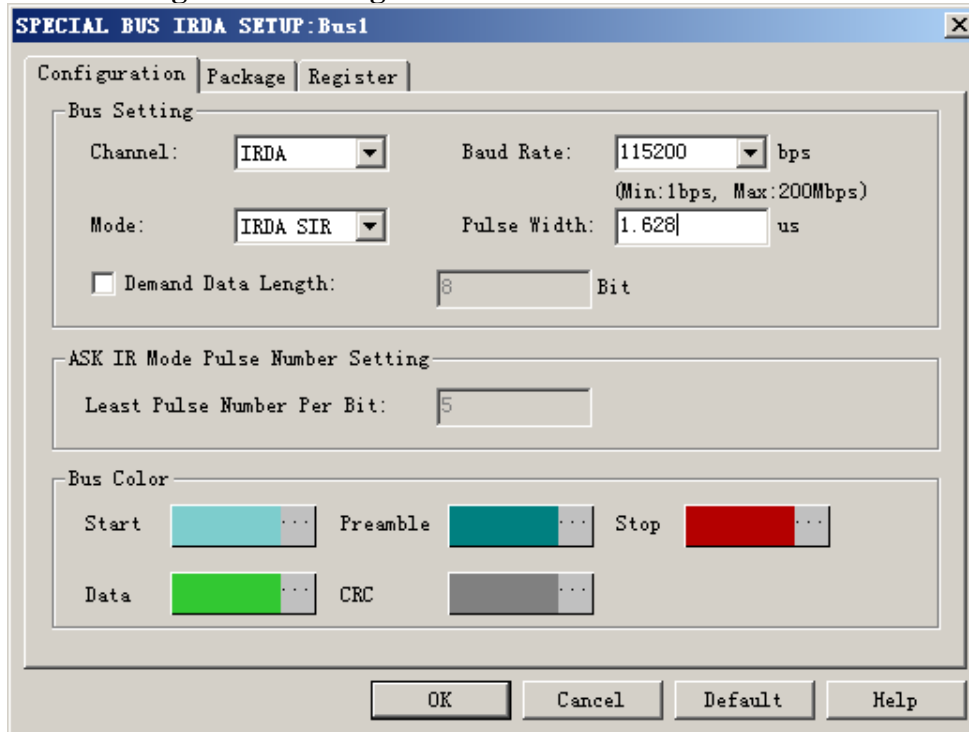
STEP 8. Click “Finish” to complete installation



2 User Interface

In the configuration, please refer to image below to select options of setting IR

IRDA Configuration Dialog Box



IRDA Channel: The default is IRDA

Mode Option: There are four mode options, such as IRDA SIR, ASK IR, IRDA HDLC and IRDA FIR. The default is IRDA SIR.

Baud rate: Baud rate is variable in according with different modes chosen..

When mode option is in IRDA SIR, the baud rate is 115200bps

When mode option is in ASK IR, the baud rate is 57600bps

When mode option is in IRDA HDLC, the baud rate is 1152000bps

When mode option is in IRDA FIR, the baud rate is 4000000bps

In addition, the baud rates on listed menu are

600, 1200, 2400, 4800, 9600, 19200, 38400, 57600, 115200, 460800, 921600, 4000000, 6000000 and 8000000bps.

Pulse width: The pulse width must be set on the modes as IRDA SIR、ASK IR、IRDA HDLC. But the **Pulse width does not to be set under** IRDA FIR mode. The default width is variable with modes and **Baud rate**.

When the default pulse of IRDA SIR Pulse is as 3/16 of Pulse width, the bit width equals to the reciprocal of baud rate.

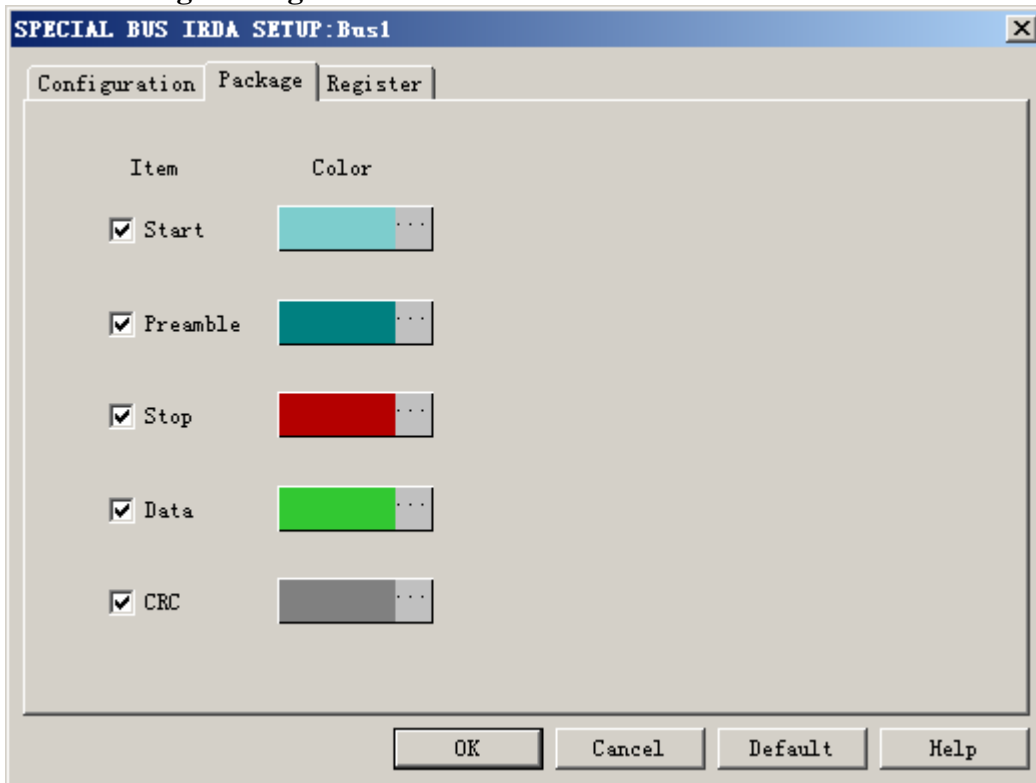
When the default pulse of ASK IR is 1us, it also equals to 500 KHz of Pulse.

When the default pulse of IR HDLC is as 1/4 of Pulse width, the bit width equals to the reciprocal of baud rate.

Demand Data Length: The default is unselected. When data length is activated, the default is 8 bits.

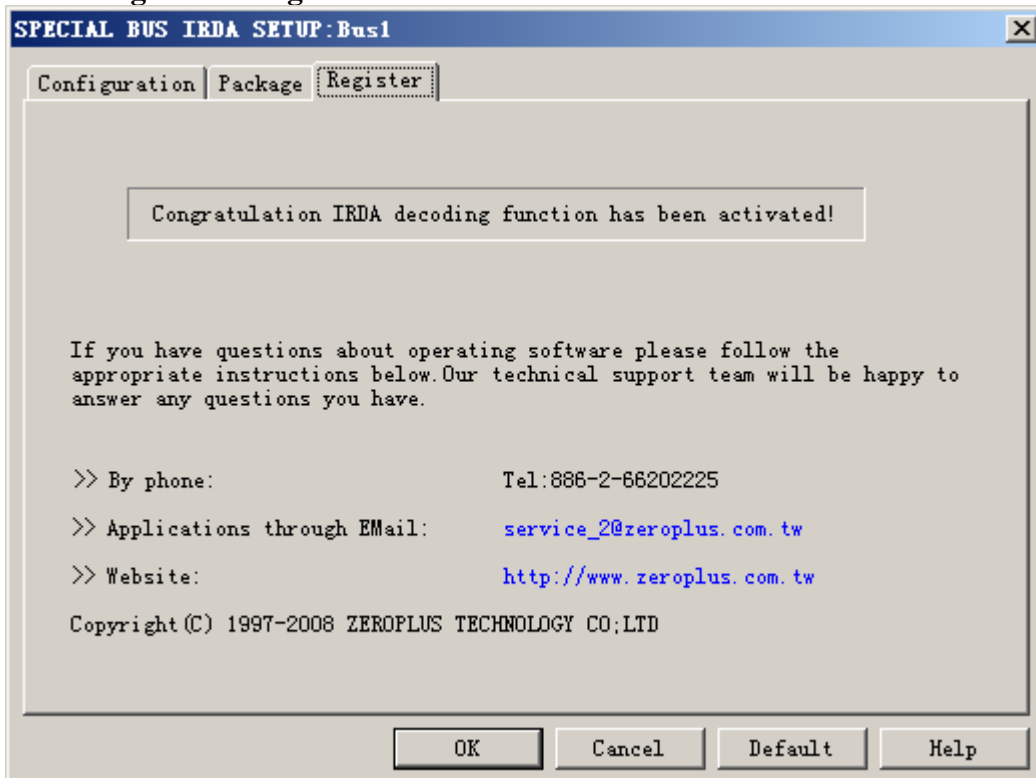
Least Pulse Number Per Bit: It is available at ASK IR mode. When ASK IR mode is activated, the default of Least Pulse Number per bit is 5.

IRDA Package Dialog Box



Package color can be varied by user.

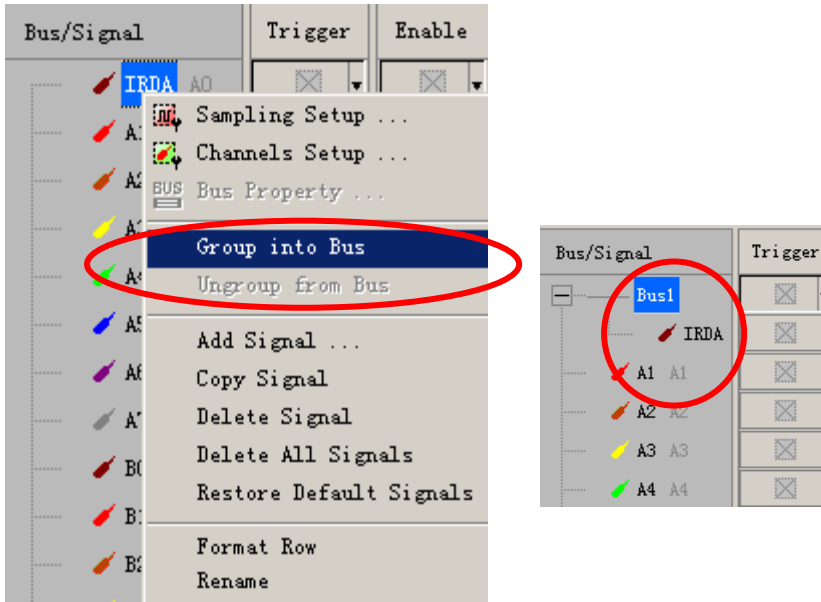
IRDA Register Dialog Box



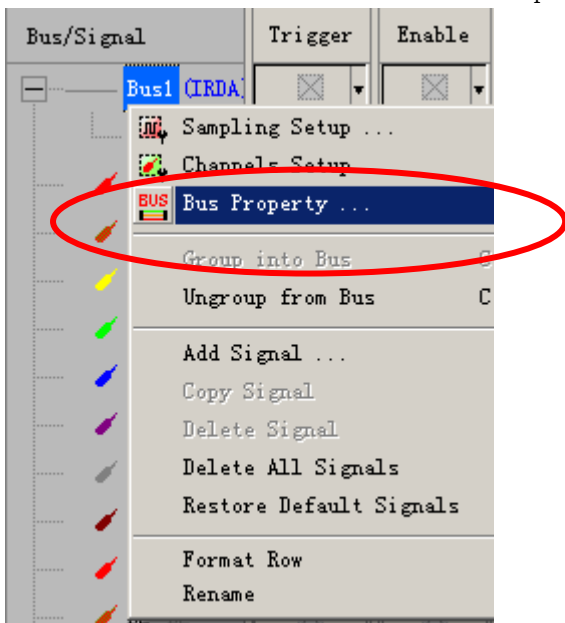
There is Zeroplus company information written. If users have question about software Operations, they can contact Zeroplus by Telephone or Email.

3 Operating Instructions

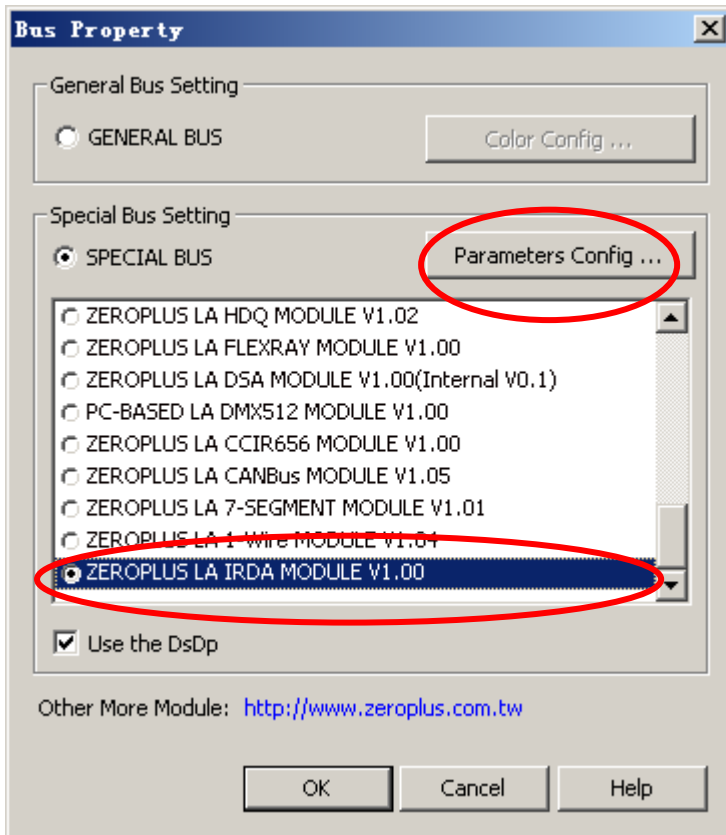
STEP 1. At first, group the unanalyzed channels into bus1 by pressing the **Right Key** on mouse.



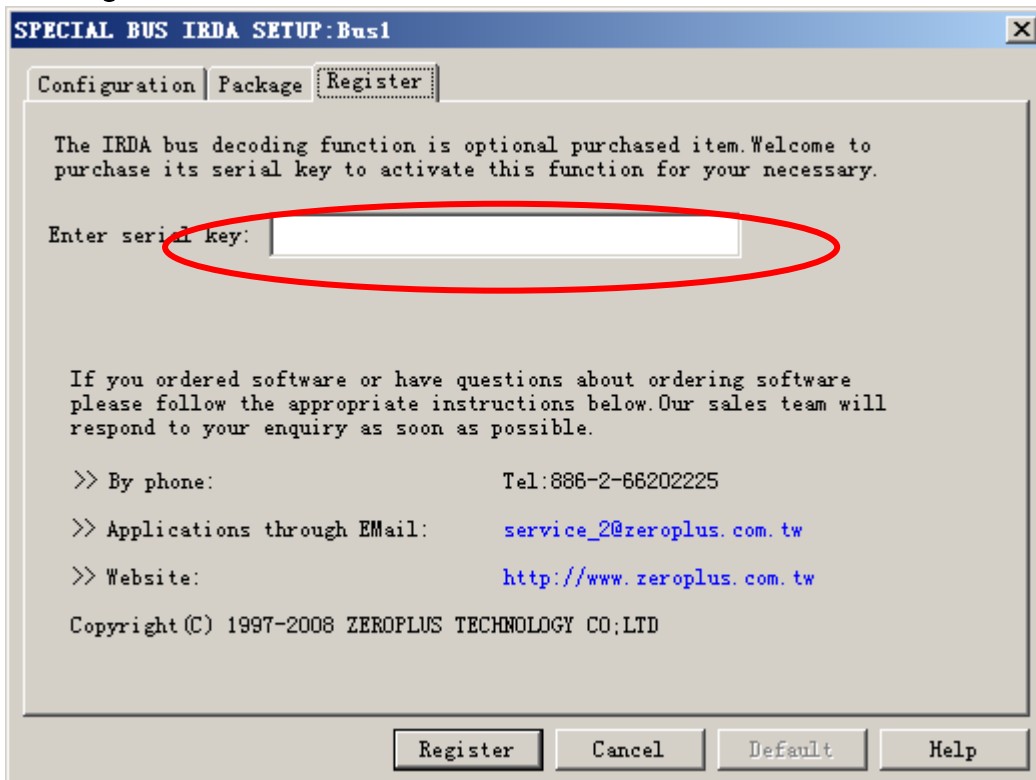
STEP 2. Select Bus1, then press **Right key** on mouse to list menu, then press **Bus Property** or **Bus** bar on the toolbar to open bus property dialog box.



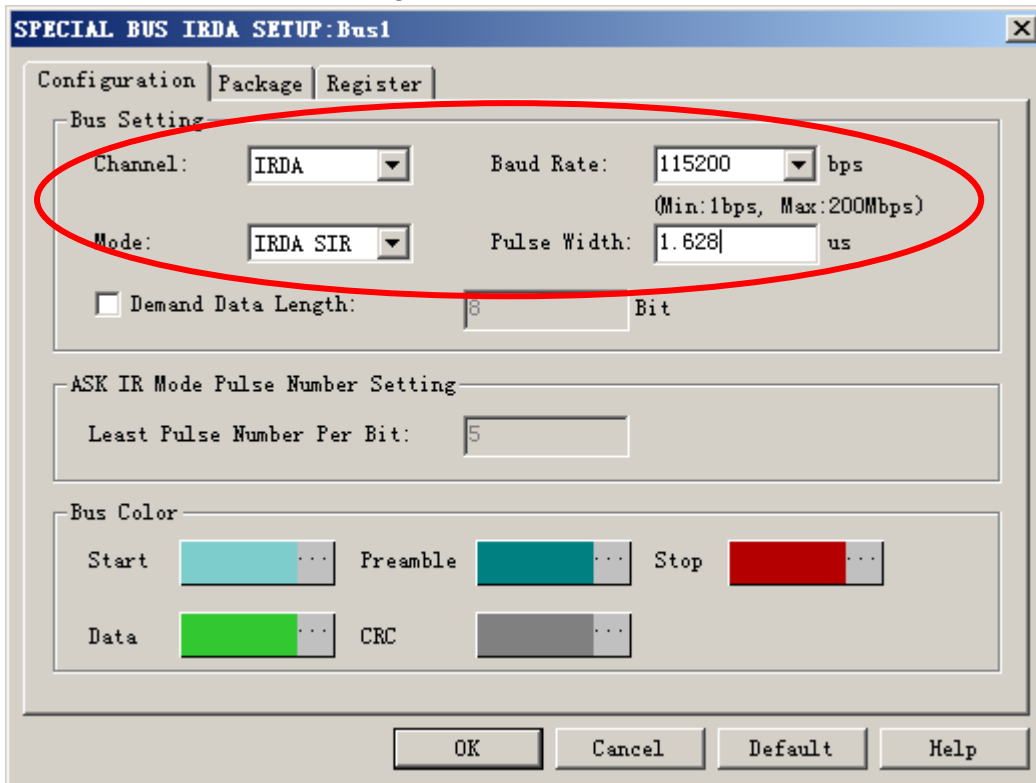
STEP 3. For Special Bus IR Parameter Configuration, select Special Bus, and then choose ZEROPLUS LA IRDA MODULE V1.00. Next click Parameter Configuration to open Parameter Configuration dialog box.



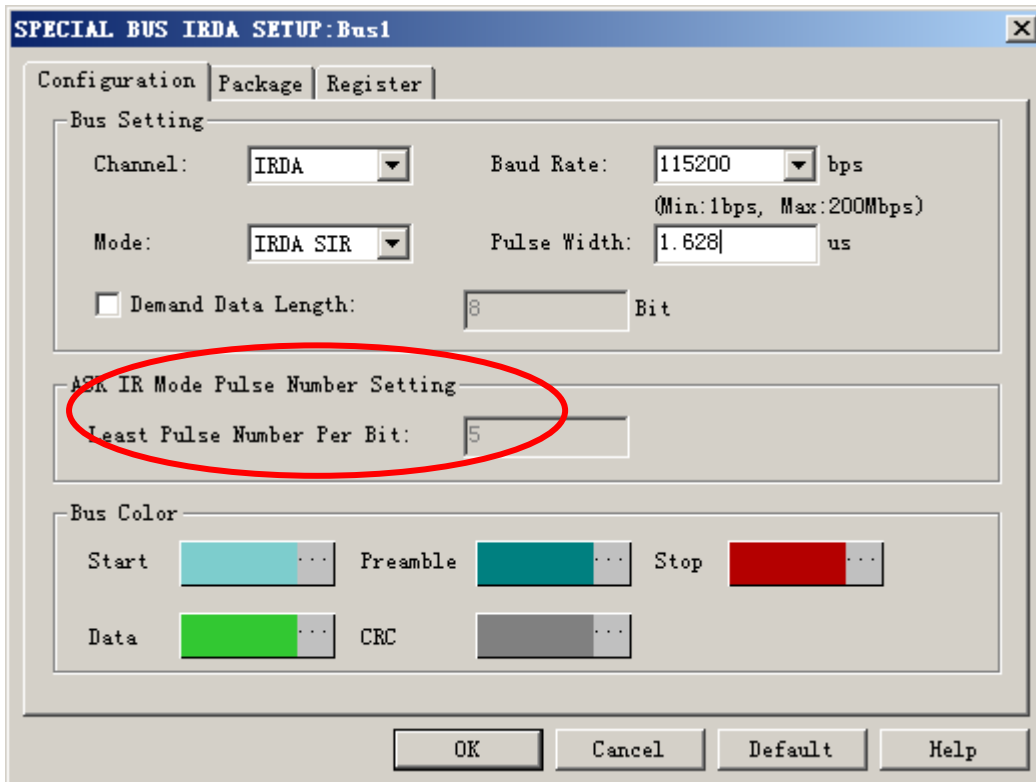
STEP 4. Press Register tab to type the serial key number of logic analyzer. Then, press Register



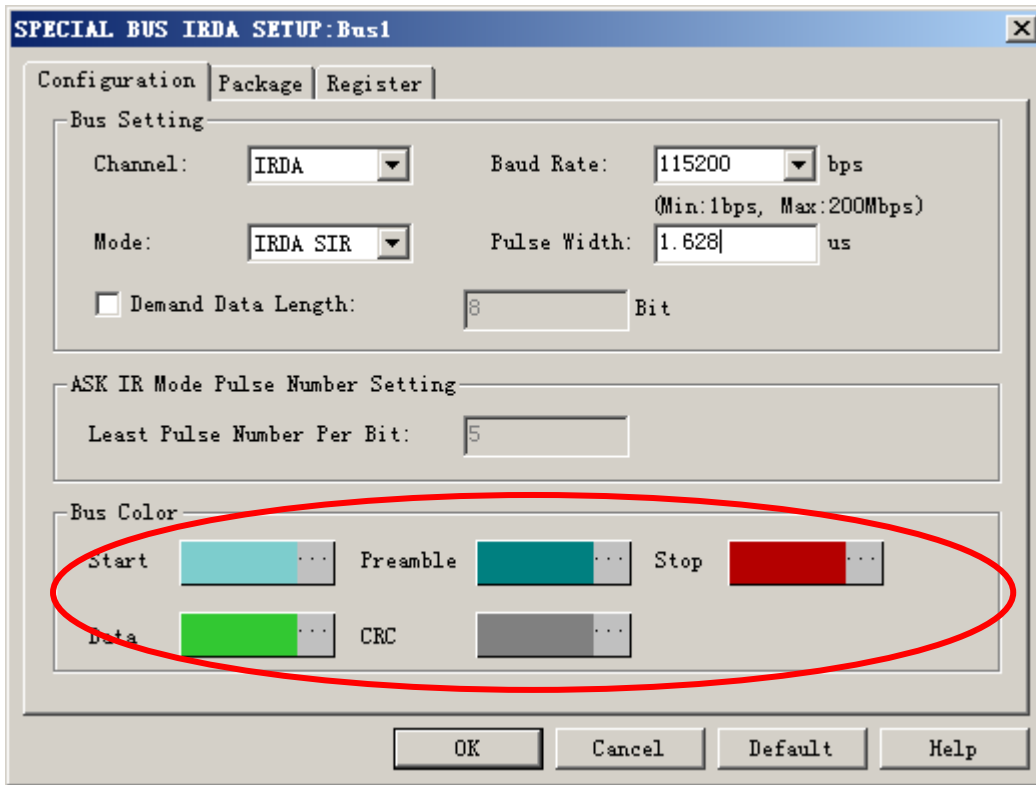
STEP 5. After pressing “OK” on Register Dialog, it turns to **Bus Property** dialogue box. Click “Parameter Configuration” to set up the parameter of special bus.



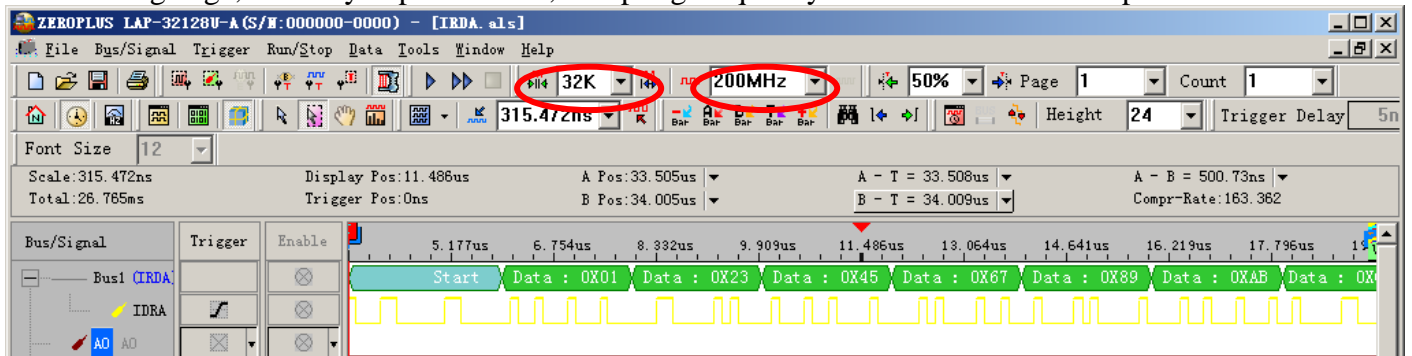
STEP 6. Setting “ASK IR Mode Pulse Number” by typing a value to Least Pulse Number Per Bit.



STEP 7. Setting Bus colors for Start, Preamble, Stop, Data and CRC .



STEP 8. Following picture shows that the completion of the Bus decoding. The conditions are set as that rising edge, Memory depth is 128K, Sampling frequency is 50MHz and the compression is activated.



Following picture shows the package list and waveforms displaying.

