



**孕龍科技股份有限公司**  
**ZeroPlus Technology Co., Ltd.**

# SPECIFICATION

**MODEL: HDA Specification**

**PART NO :** B08038

**VERSION :** V1.02

Approver		Check	Design
GM	PM		

Customer Confirm

\* Please fax the file to ZeroPlus Technology after signing.

2F, NO.123, Jian Ba Rd,  
Chung Ho City, Taipei Hsian, R.O.C.

Tel: +886-2-66202225  
Fax: +886-2-22234362



# Content

1	Software Installation .....	3
2	User Interface .....	7
3	Operating Instructions.....	9



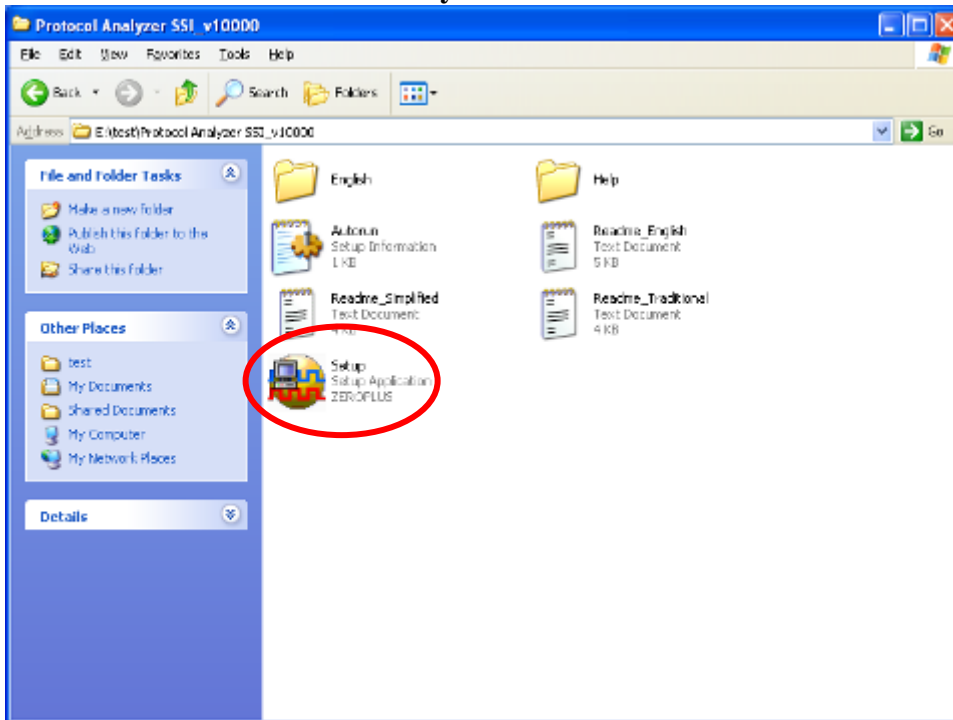
# 1 Software Installation

Please install the software as the following steps:

※ Remark: 1. The installation steps for all protocol analyzers are the same; you can complete the installation by following procedures. Following is an example on how to install protocol analyzer SSI.

※ Remark: 2. We won't have additional notice for you, when there is any modification of the module specification. If there is some unconformity caused by the module version upgrade, users should take the module software as the standard.

## STEP 1. Install Protocol Analyzer Module.

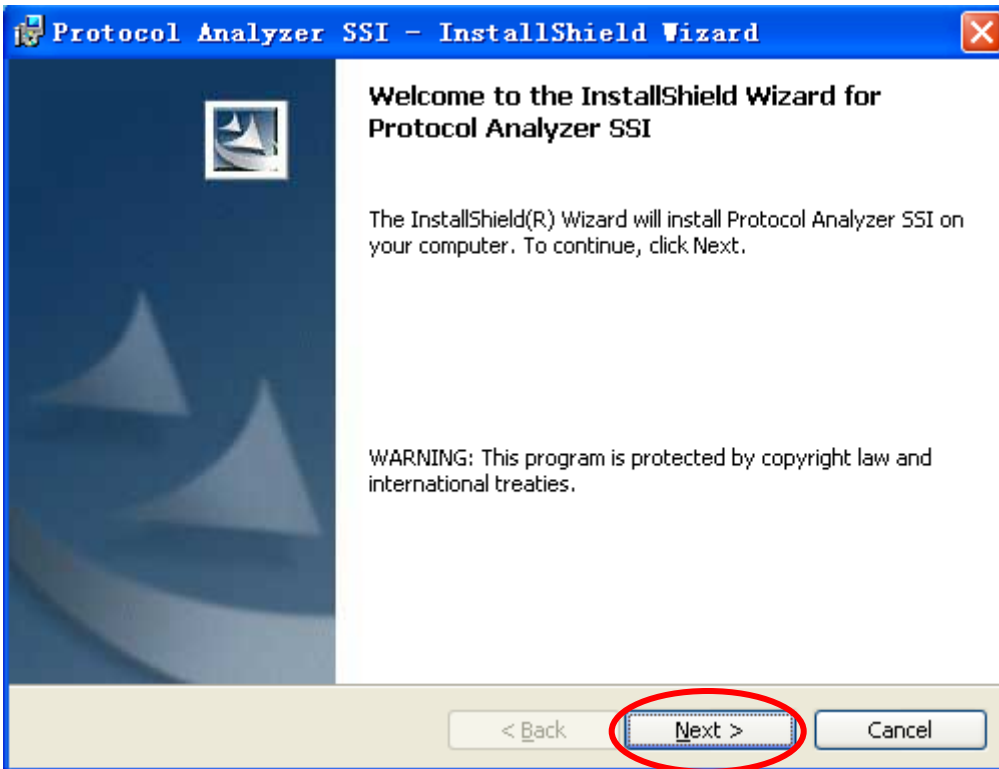


## STEP 2. Click Install.

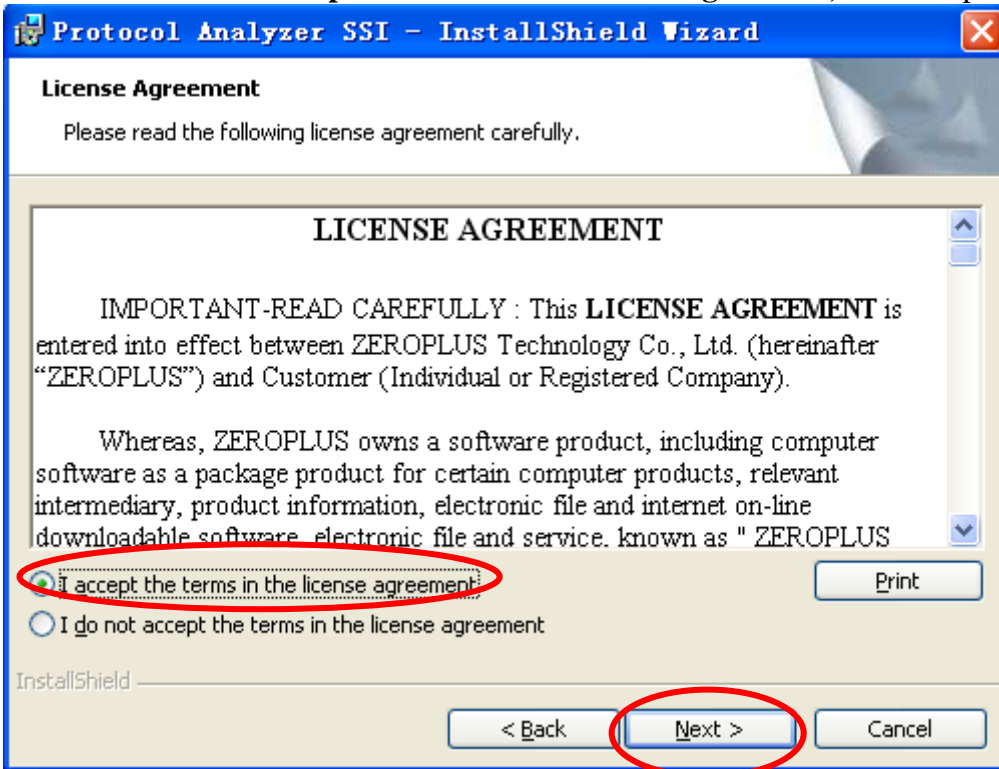




**STEP 3.** Click Next.



**STEP 4.** Select I accept the terms in the license agreement, and then press Next.





**STEP 5.** Fill in users' information in the below dialog box and click **Next**.

Protocol Analyzer SSI - InstallShield Wizard

**Customer Information**

Please enter your information.

User Name:  
sunshine

Organization:  
zeroplus

Install this application for:

Anyone who uses this computer (all users)

Only for me (sunshine)

InstallShield

< Back   **Next >**   Cancel

**STEP 6.** First, select **Complete** and then click **Next**.

Protocol Analyzer SSI - InstallShield Wizard

**Setup Type**

Choose the setup type that best suits your needs.

Please select a setup type.

**Complete**  
All program features will be installed. (Requires the most disk space.)

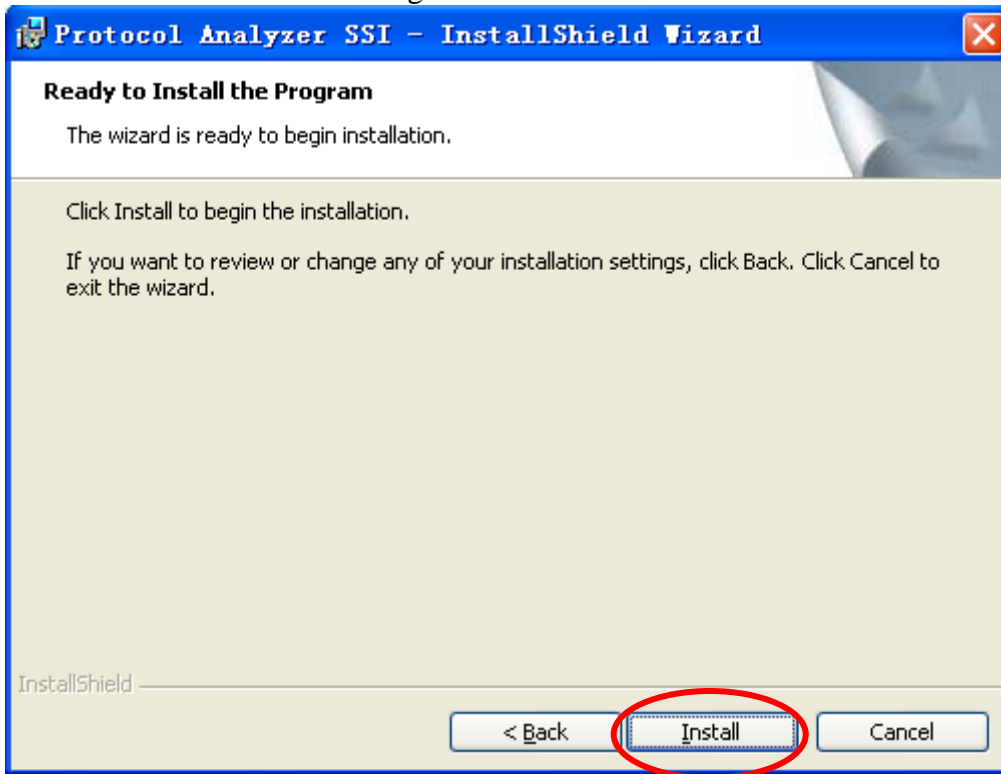
**Custom**  
Choose which program features you want installed and where they will be installed. Recommended for advanced users.

InstallShield

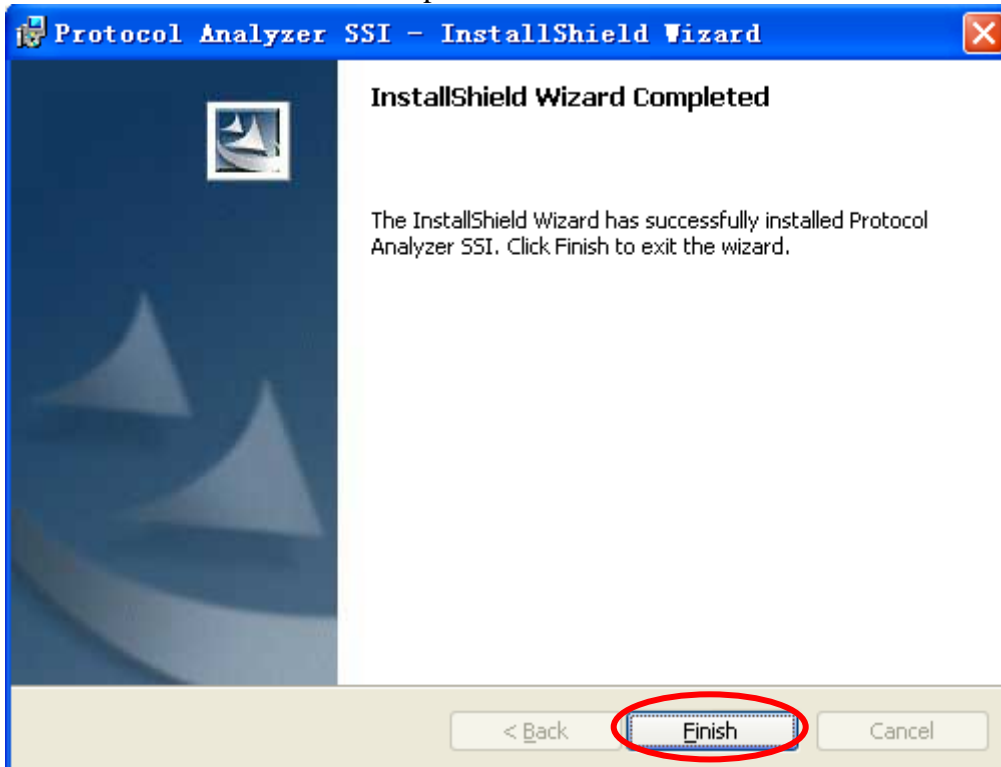
< Back   **Next >**   Cancel



**STEP 7.** Click **Install** to begin the installation.



**STEP 8.** Click **Finish** to complete the installation.

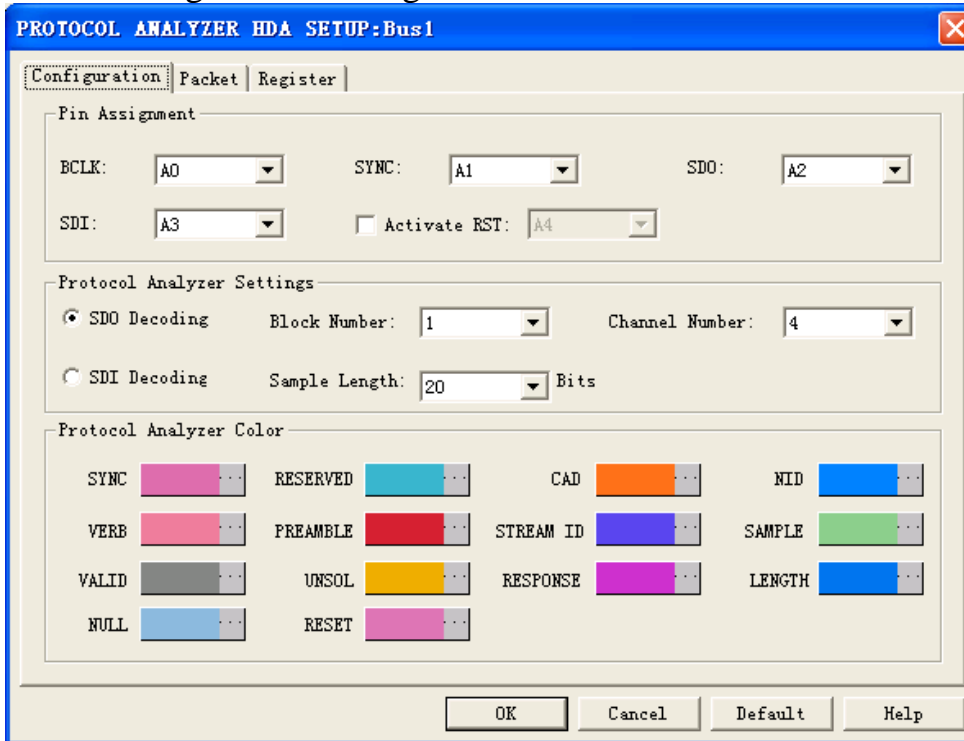




## 2 User Interface

In the configuration, please refer to the below images to select options of setting HDA module.

### HDA Configuration Dialog Box



#### Pin Assignment:

**BCLK:** It is the Clock signal channel, and the default is A0.

**SYCN:** It is the Data Synchronization channel, and the default is A1.

**SDO:** It is the Data Output channel, and the default is A2.

**SDI:** It is the Data Input channel, and the default is A3.

**RST:** It is the Reset channel; RST can have effect when the RST is at the Low Level. There is also the selectable channel, and the default is A4.

#### Protocol Analyzer Settings:

**SDO Decoding and SDI Decoding:** It can decode the Output Data or Input Data. When selecting the SDI Decoding, the two options of Block Number and Channel Number can't be set.

**Block Number:** It is used for setting the number of Sample Block in a Stream Packet of the Output Data; the selectable is "1", "2" and "4".

**Channel Number:** It is used for setting the number of channels in a Block, that's to say, the number of Sample; the selectable value is from "1" to "16".

**Sample Length:** It is used for setting the Length of a Sample; the selectable value is "8", "16", "20", "24" and "32".

#### Protocol Analyzer Color:

The Protocol Analyzer Color can be varied by users.

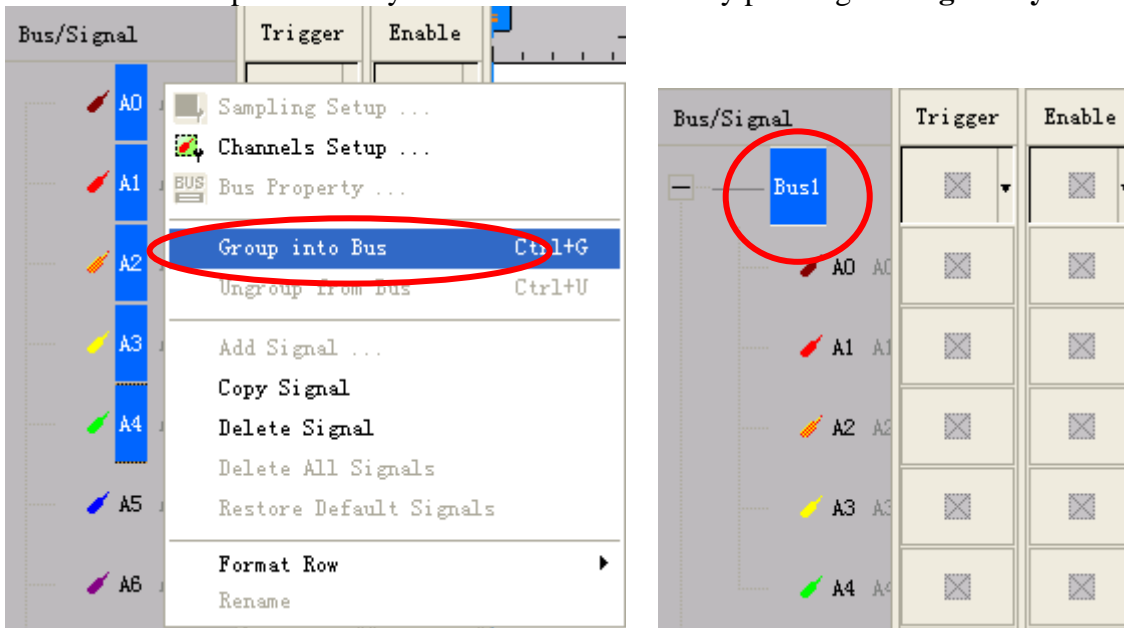




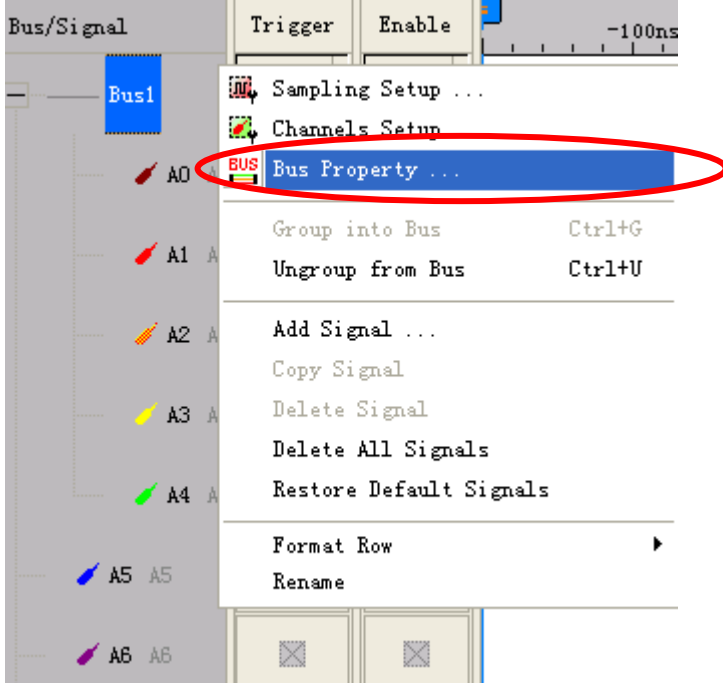


### 3 Operating Instructions

**STEP 1.** Group the unanalyzed channel into **Bus 1** by pressing the **Right Key** on the mouse.

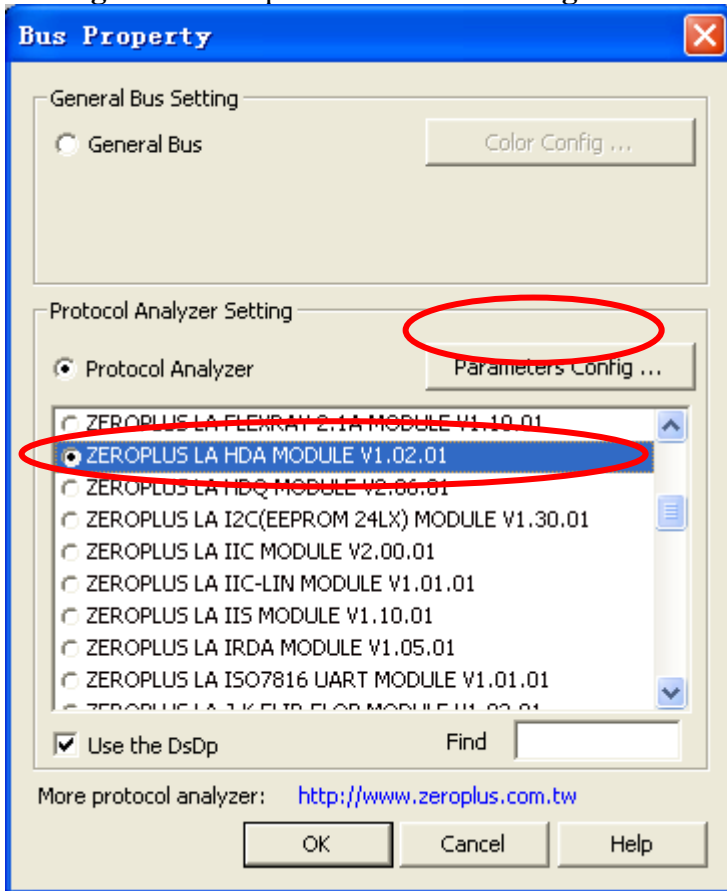


**STEP 2.** Select **Bus1**, and press **Right Key** on the mouse to list the menu, then press **Bus Property** or **Bus bar** on the toolbar to open **Bus Property** dialog box.

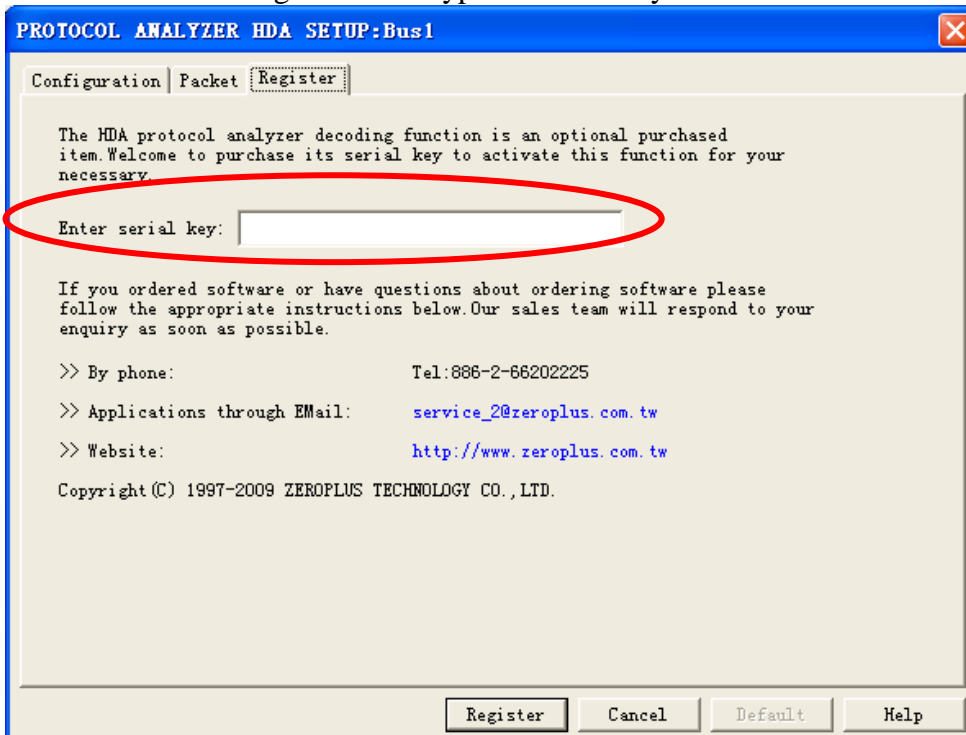




**STEP 3.** For Protocol Analyzer HDA Parameters Configuration, select Protocol Analyzer, and then choose **ZEROPLUS LA HDA MODULE V1.02.01 (internalV1.00)**. Next click **Parameters Configuration** to open **Parameters Configuration** dialog box.

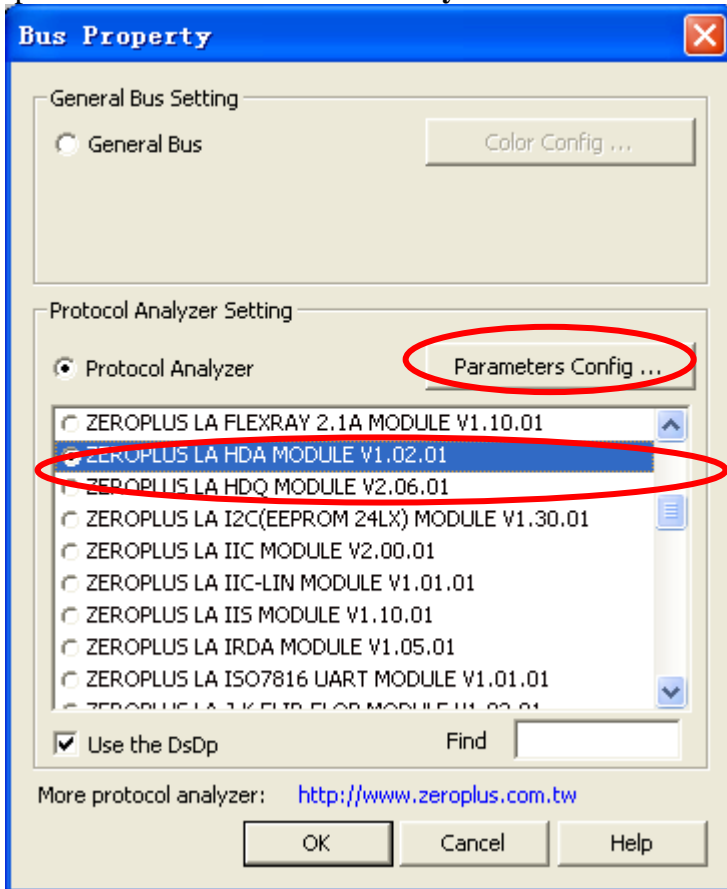


**STEP 4.** Press Register tab to type the serial key number of HDA. Then, press **Register**.

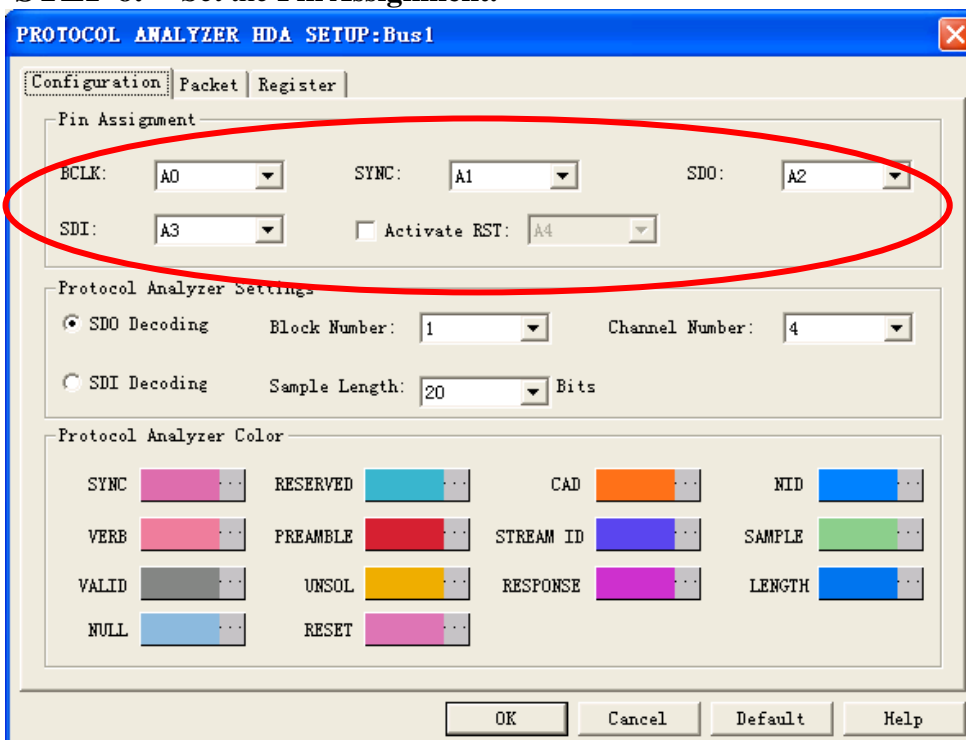




**STEP 5.** Click **Parameters Configuration** again, and open the configuration dialog box to set the parameters for the **Protocol Analyzer HDA**.

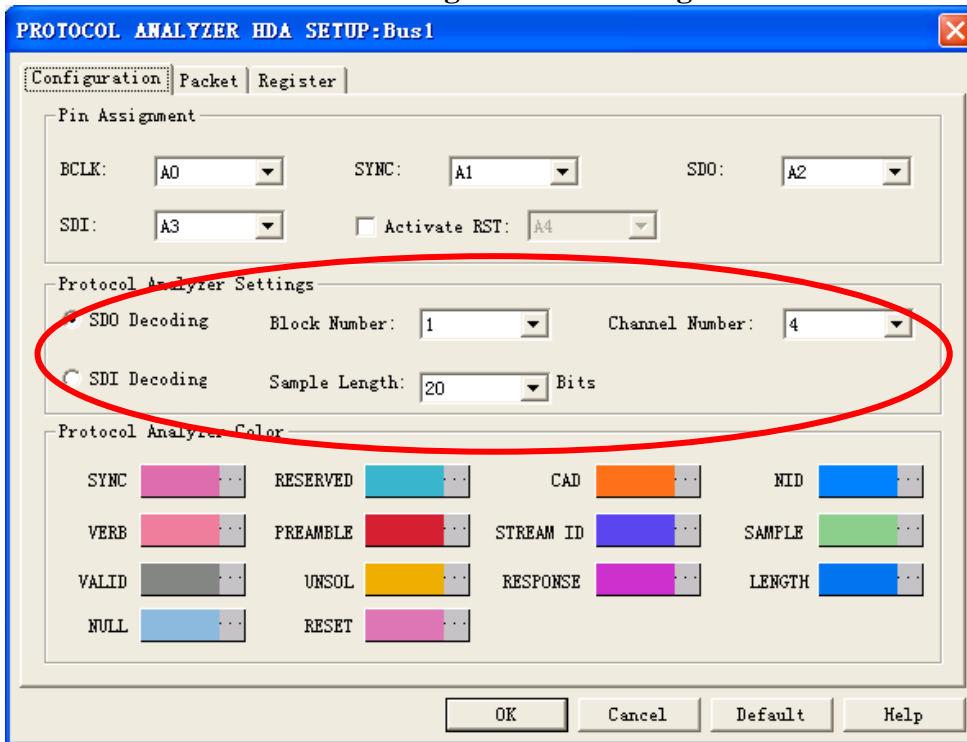


**STEP 6.** Set the **Pin Assignment**.

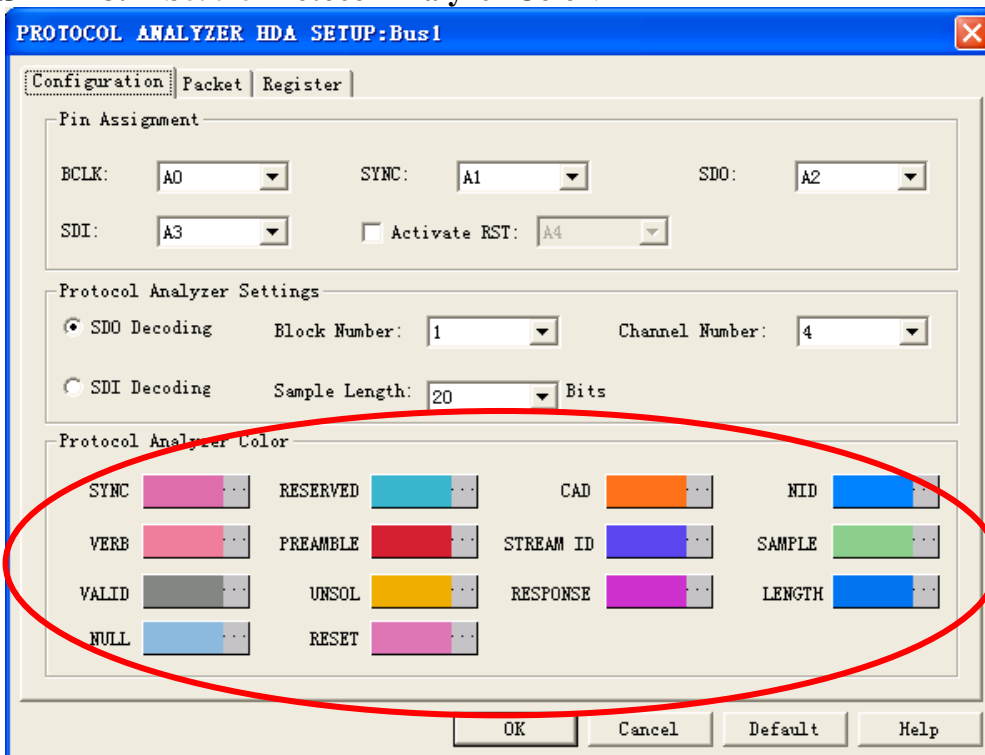




### STEP 7. Set the SDO Decoding or SDI Decoding.



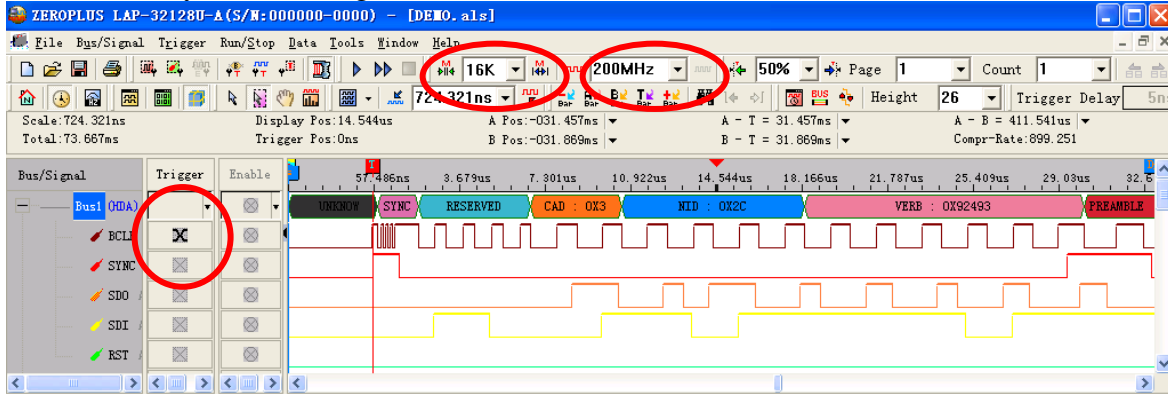
### STEP 8. Set the Protocol Analyzer Color.





**STEP 9.** Following pictures show the completion of the protocol analyzer decoding and the packet list. The trigger condition is set as Either Edge; the memory depth is 16K; the sampling frequency is 200MHz.

**Protocol Analyzer Decoding**



**Packet List**

