



**孕龍科技股份有限公司**  
**ZEROPLUS TECHNOLOGY CO.,LTD**

# Instrument Business Department

## DSA Specification

Version : V1.0

## Content

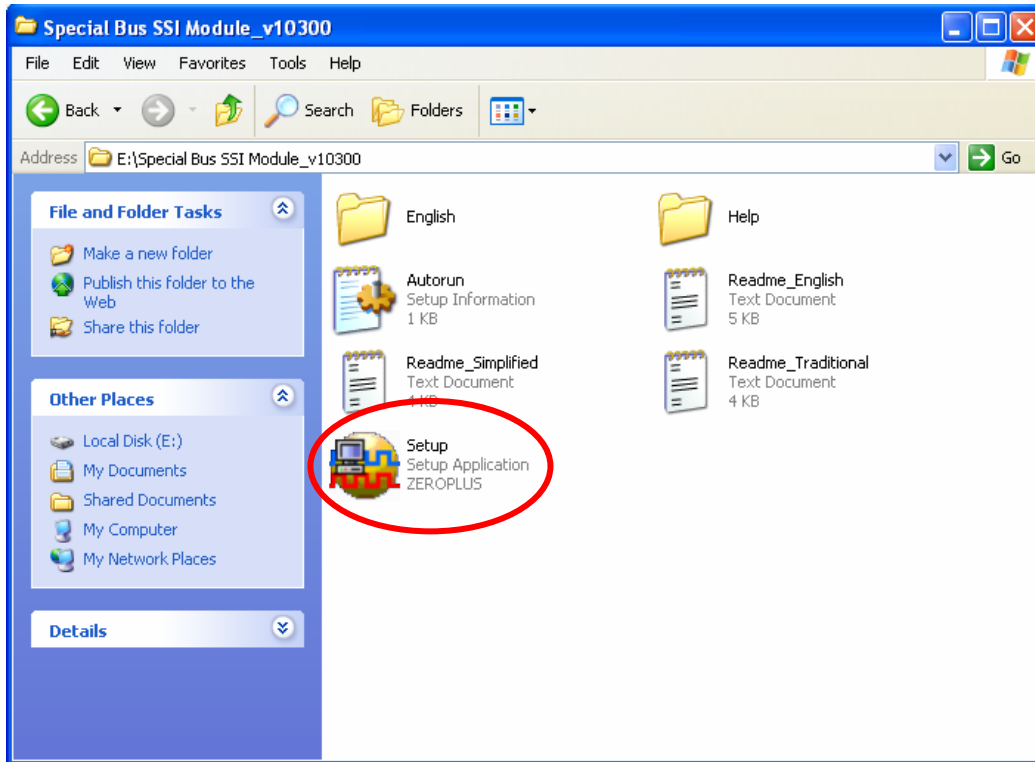
1	Software Installation.....	3
2	User Interface.....	7
3	Operating Instructions.....	8

## 1 Software Installation

Please follow below steps to install the software:

※ **Remarks:** The installation steps for all buses are the same; you can complete installation by following procedures. Below is an example on how to install SSI bus.

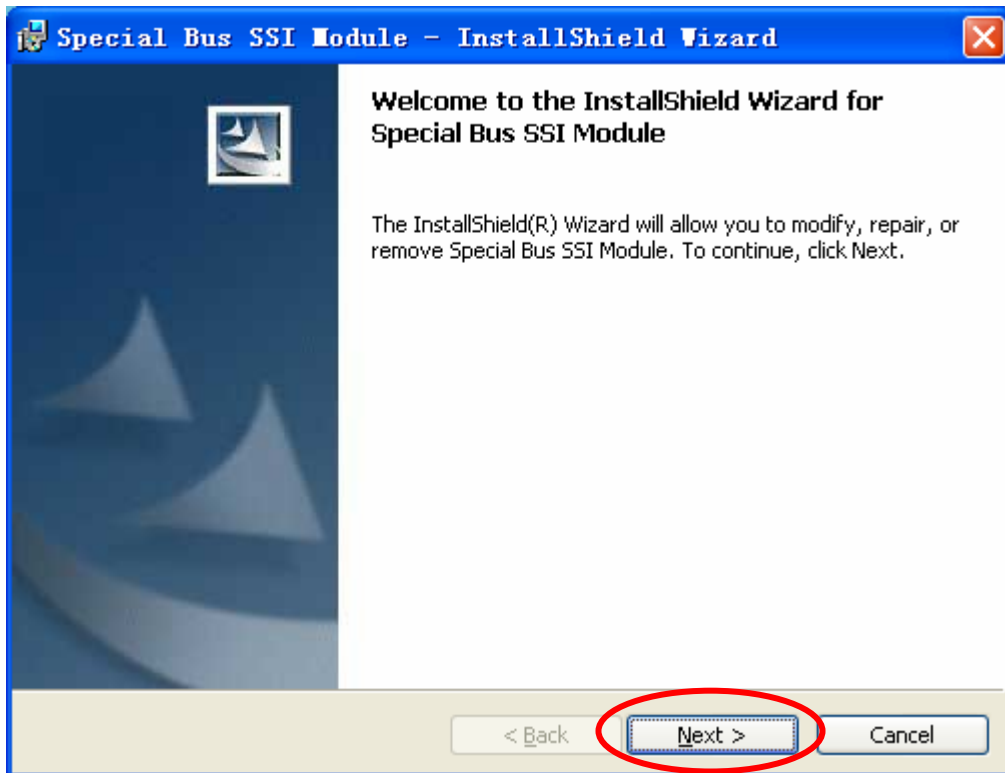
### STEP 1. Install Bus Module



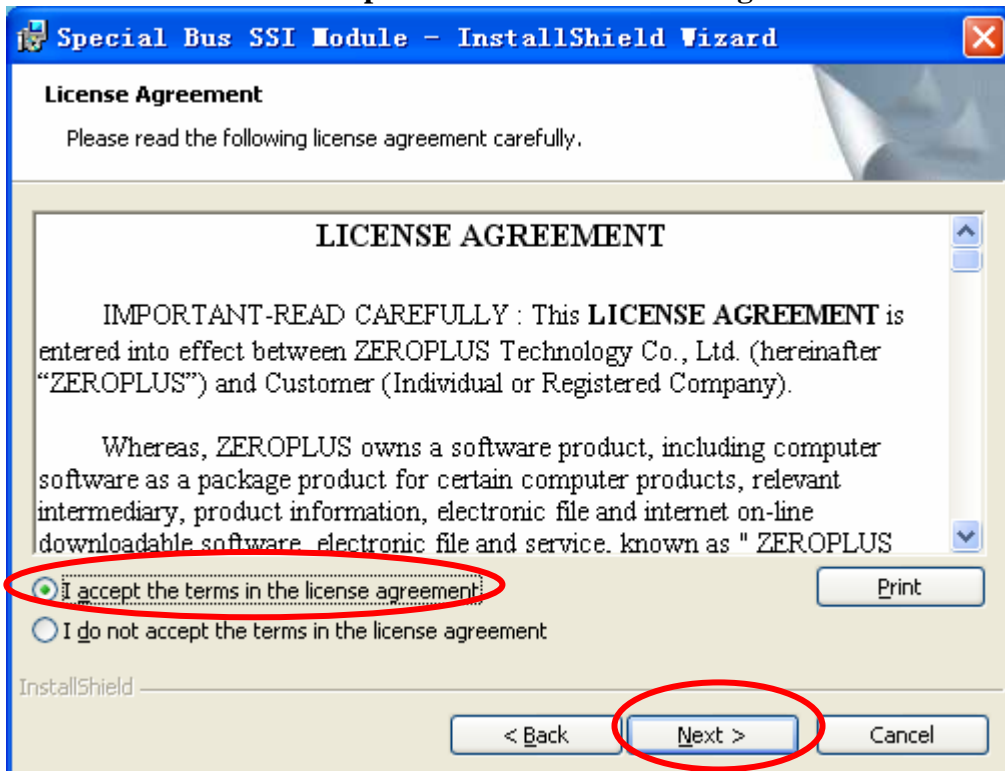
### STEP 2. Click Install.



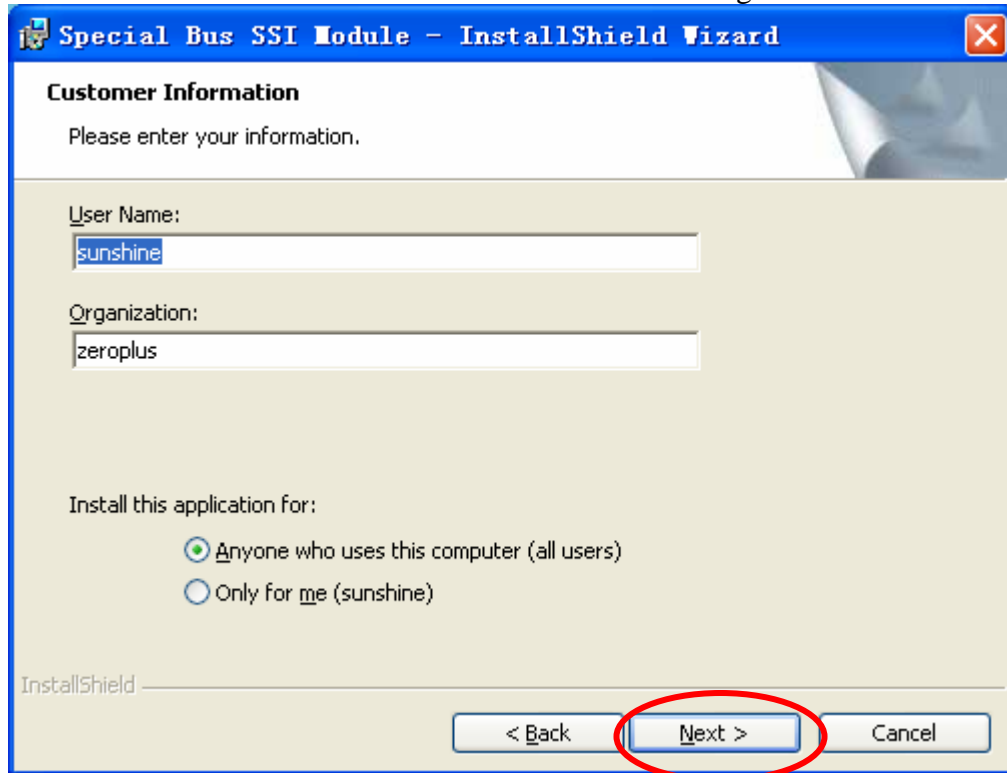
**STEP 3.** Click Next.



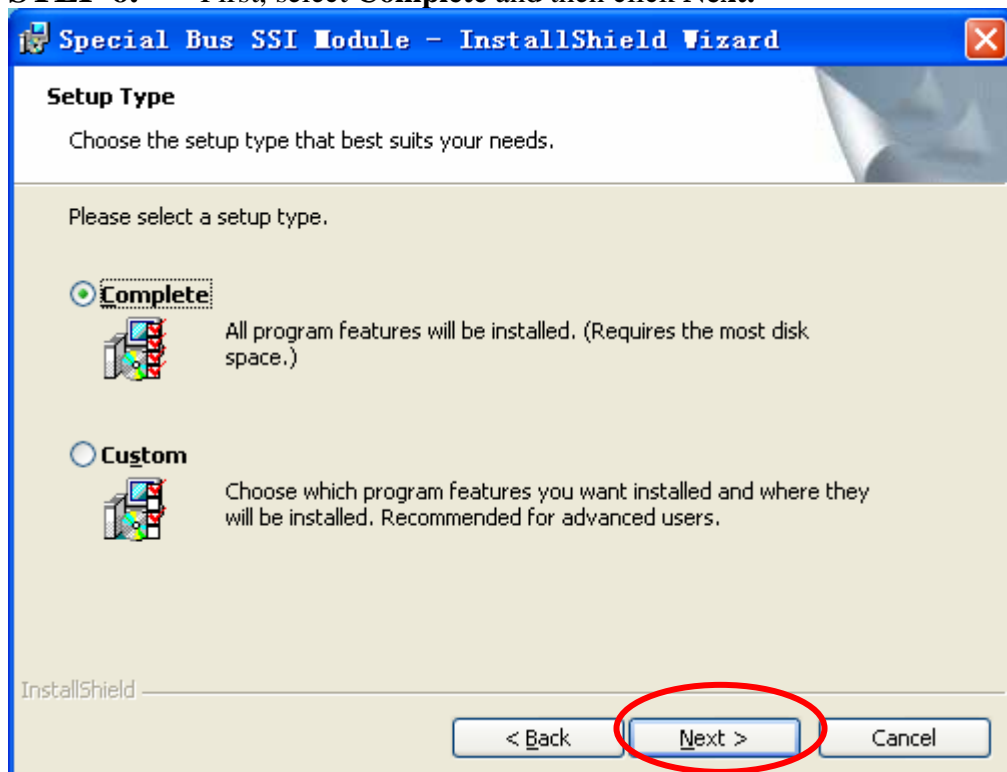
**STEP 4.** Select I accept the terms in the license agreement, and then press Next.



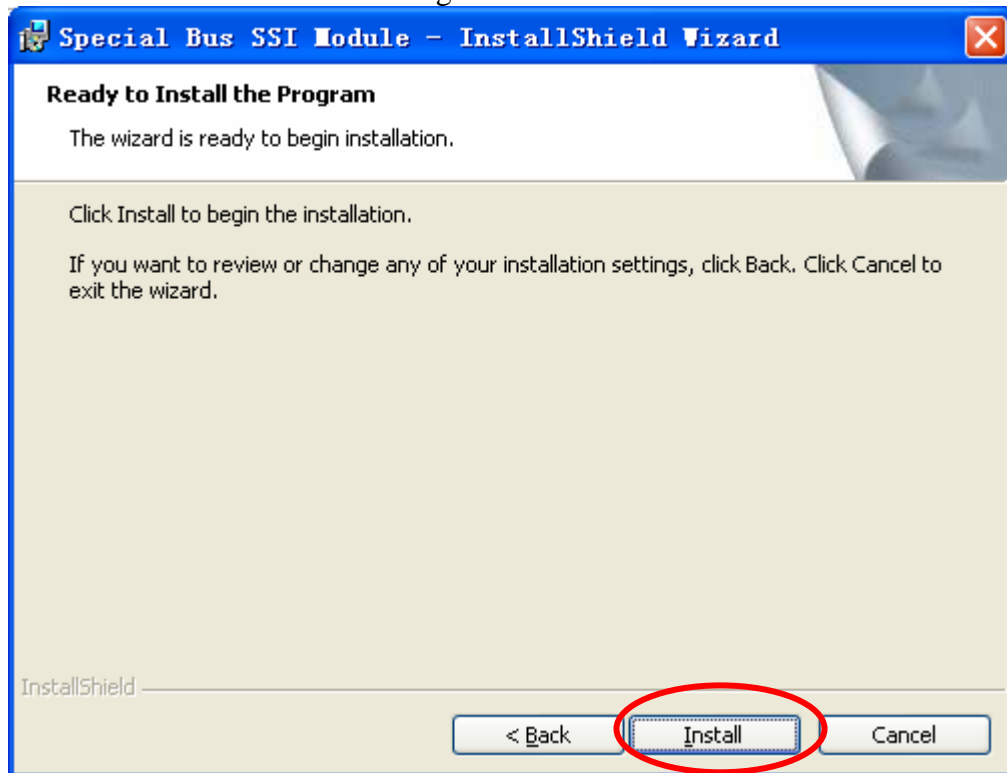
**STEP 5.** Fill in user information in the below dialog box and click **Next**.



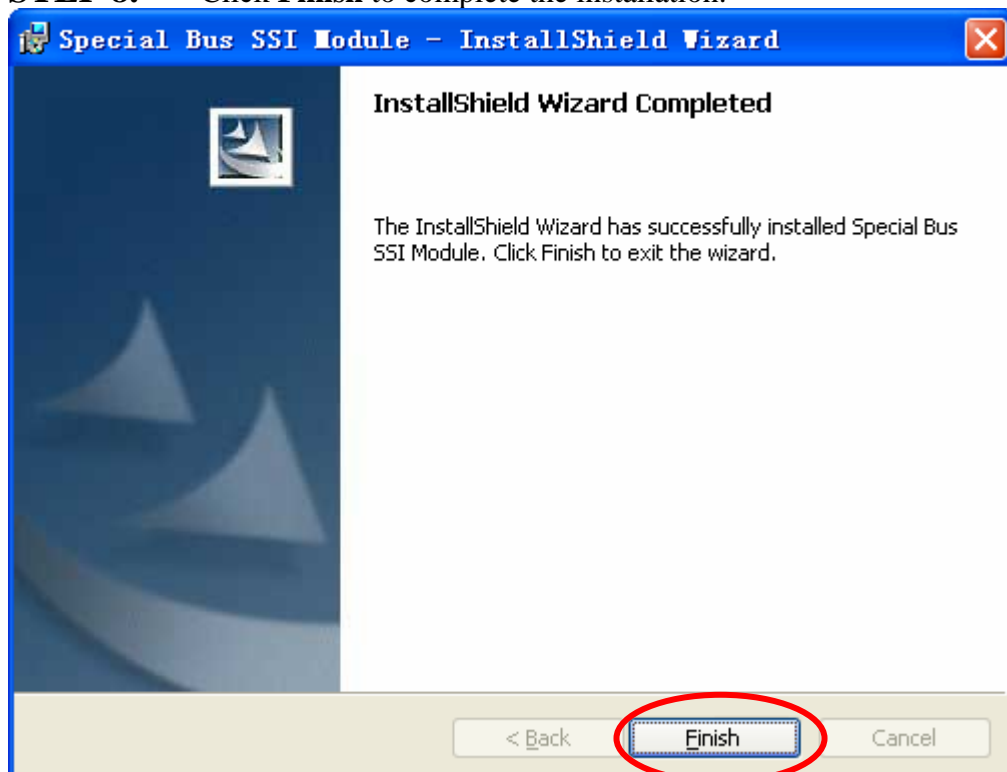
**STEP 6.** First, select **Complete** and then click **Next**.



**STEP 7.** Click **Install** to begin the installation.



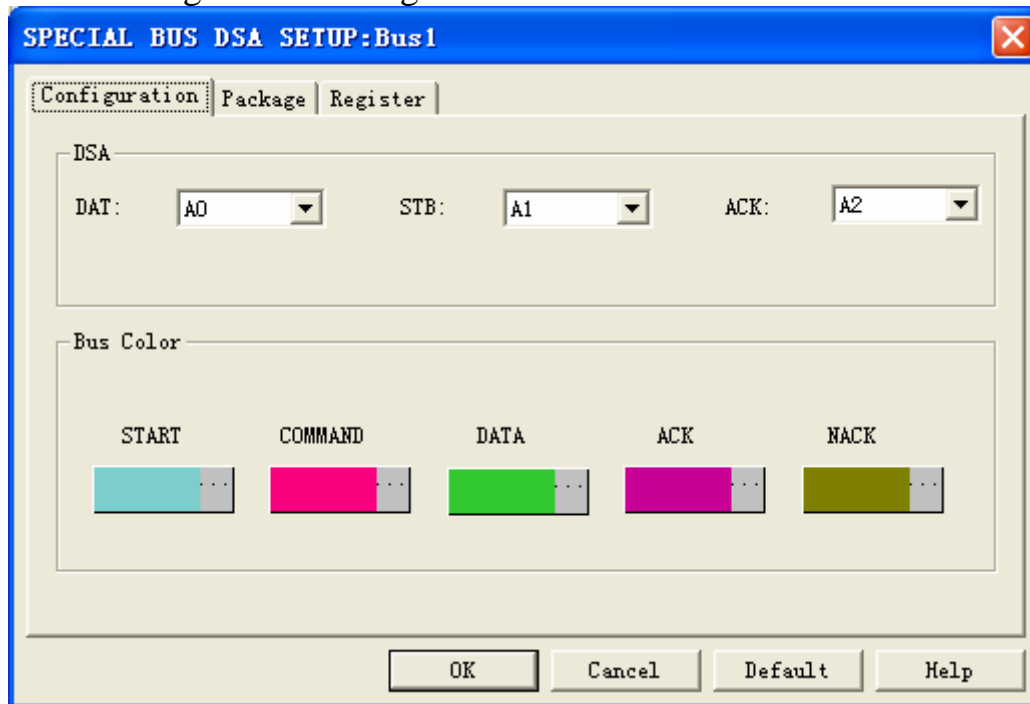
**STEP 8.** Click **Finish** to complete the installation.



## 2 User Interface

Please refer to the below images to select options of setting DSA Module

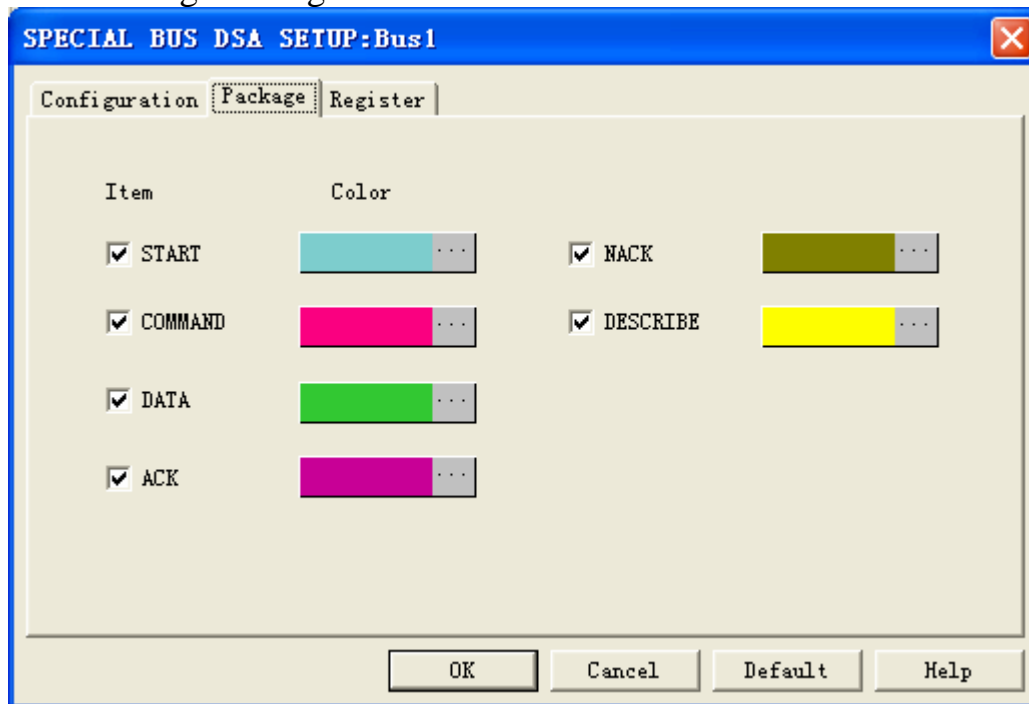
DSA Configuration Dialog Box



- DSA channels:**
1. DATA is the data signal Line, its default is A0
  2. STB is the signal latch line, its default is A1.
  3. ACK is the transmission confirmation line, its default is A2.

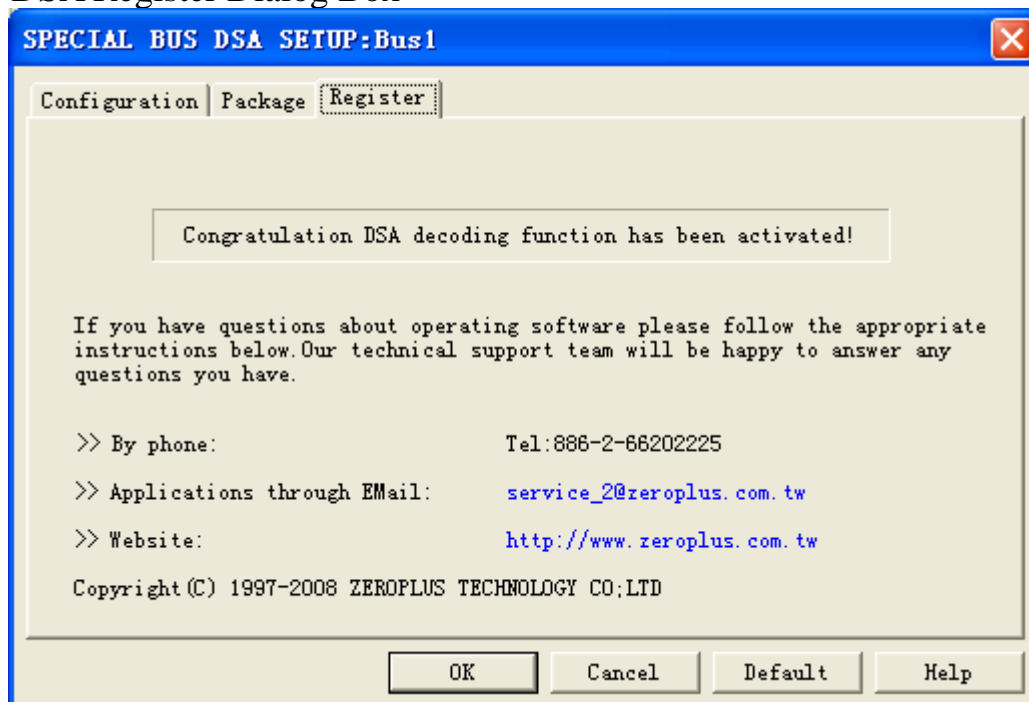
**Bus Color:** Set the colors for bus package

### DSA Package Dialog Box



In the package dialog, user can vary the color of items.

### DSA Register Dialog Box

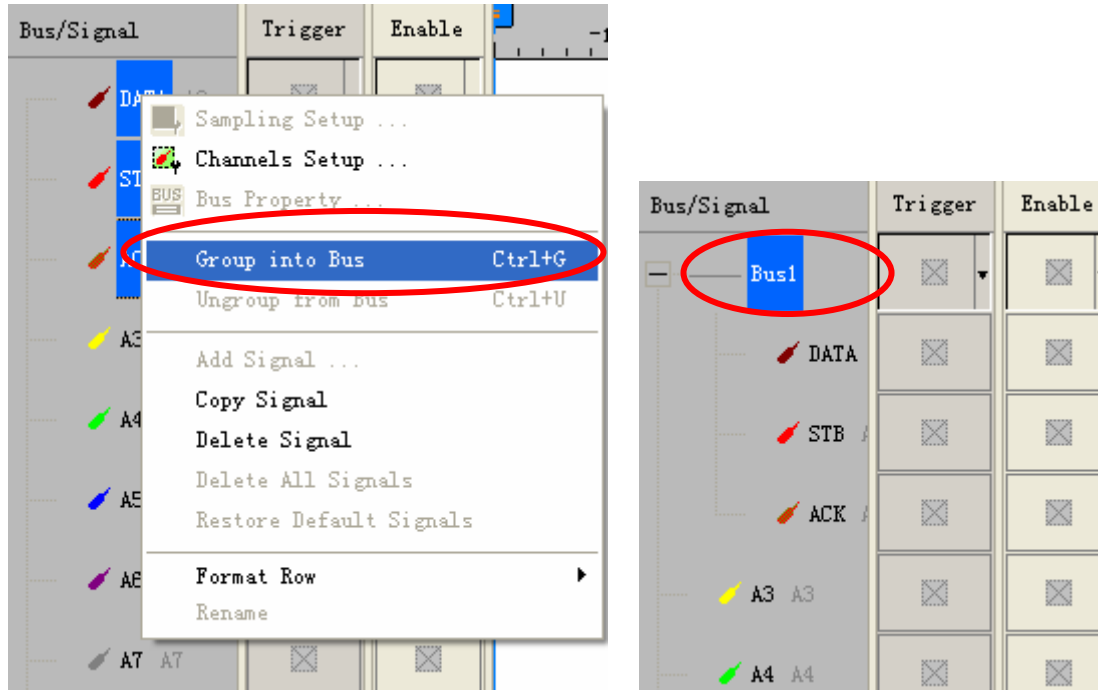


There is Zeroplus company information details. If you have any questions about software operations, you can contact Zeroplus by Telephone or Email.

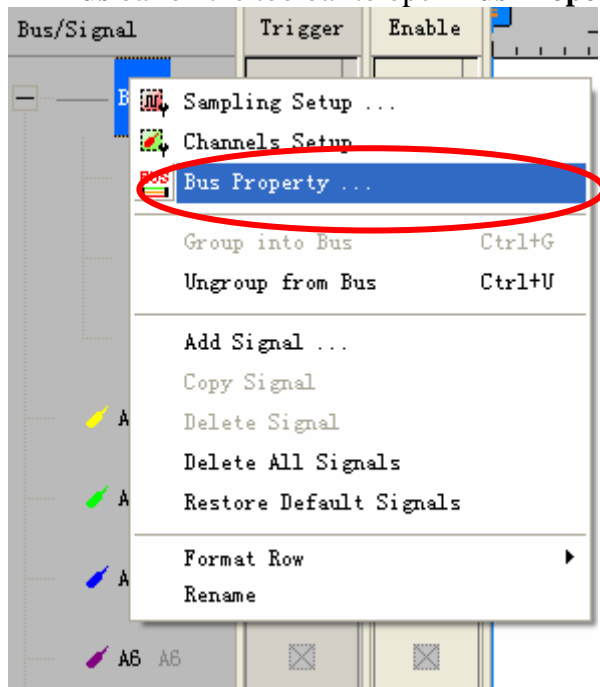
## 3 Operating Instructions



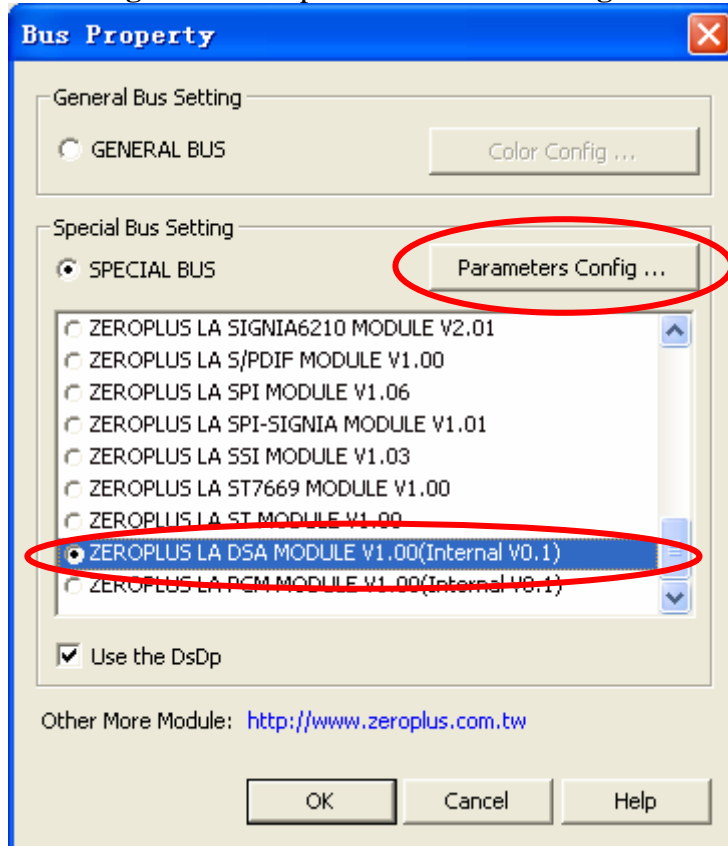
**STEP 1.** First, group the unanalyzed channels into **bus1** by pressing the **Right Key** on mouse.



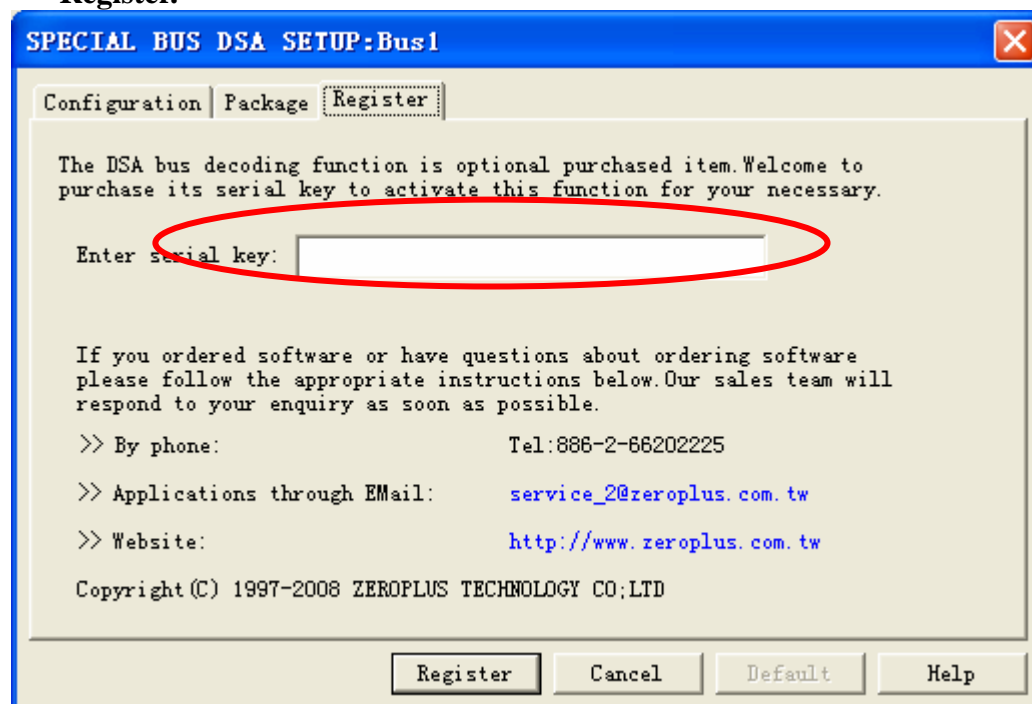
**STEP 2.** Select **Bus1**, press **Right key** on mouse to list menu, then press **Bus Property** or **Bus bar** on the toolbar to open **Bus Property** dialog box.



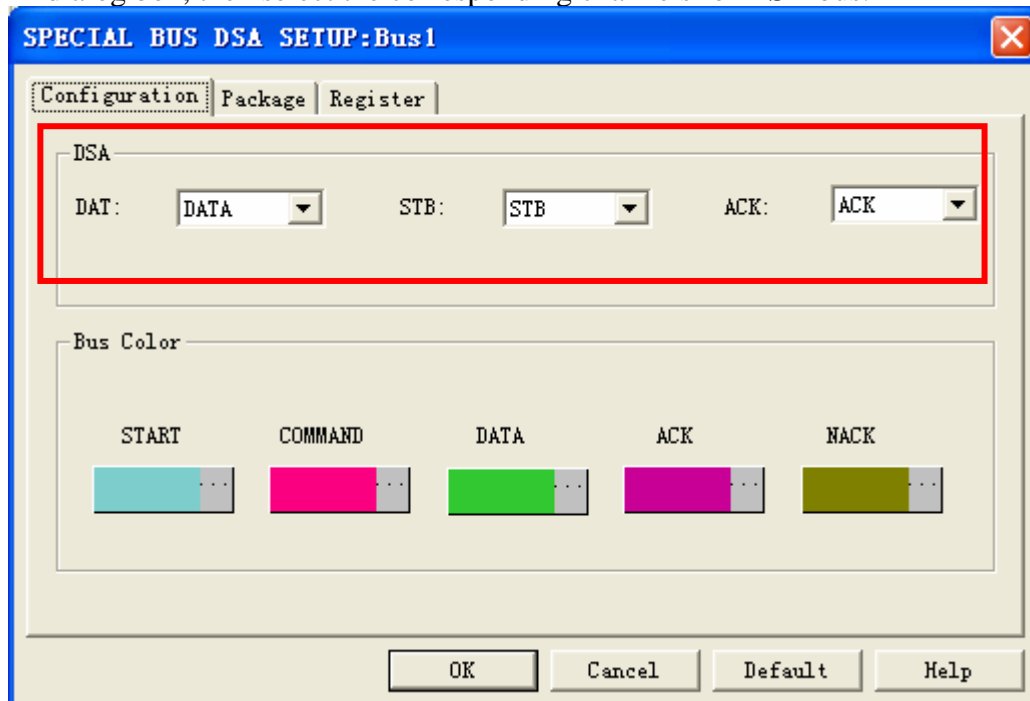
**STEP 3.** For Special Bus DSA Parameters Configuration, select Special Bus, and then choose **ZEROPLUS LA DSA MODULE V1.00 (Internal V0.1)**. Next click **Parameters Configuration** to open **Parameters Configuration** dialog box.



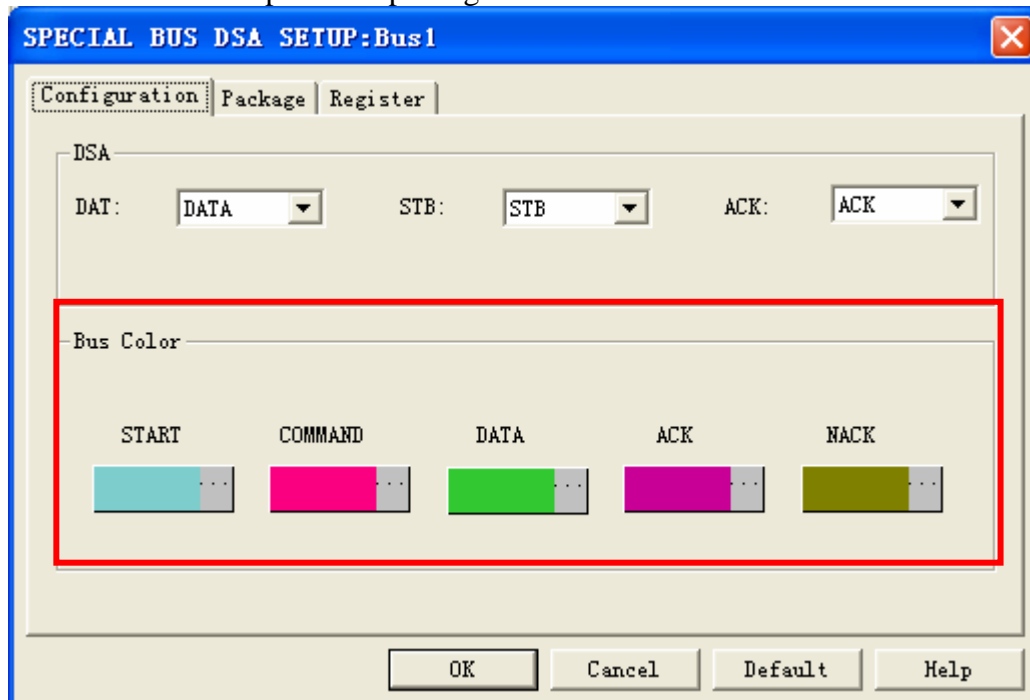
**STEP 4.** Press Register tab to key in the serial key number of logic analyzer. Then, press **Register**.



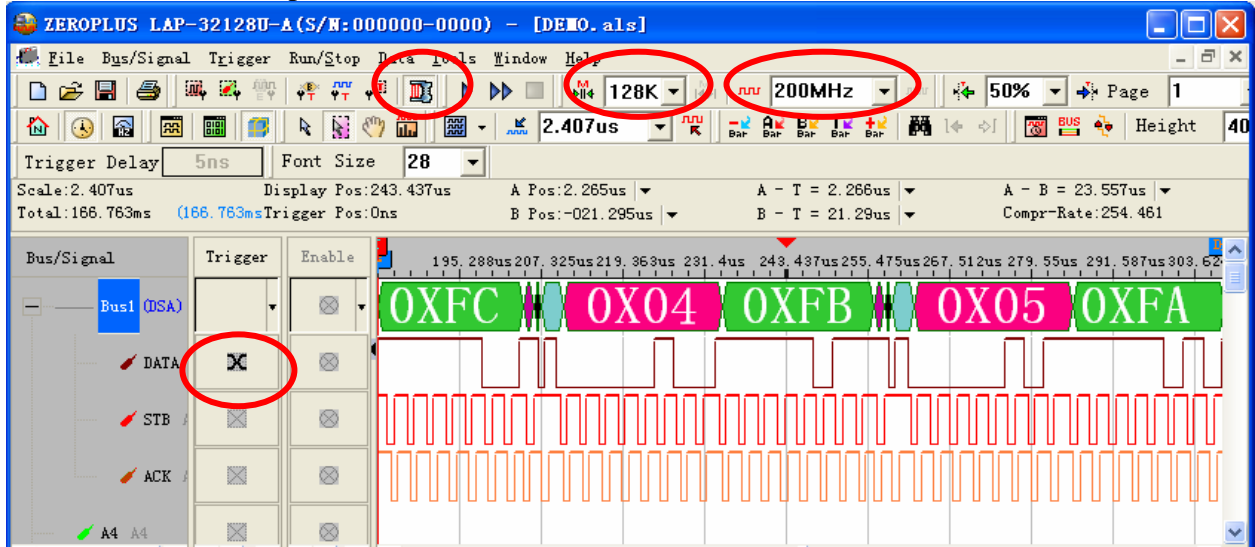
**STEP 5.** After completing registration ,click **Configuration** key to open the configuration dialog box, then select the corresponding channels for **DSA** bus.



**STEP 6.** Set up the bus package color .



**STEP 7.** Following pictures show the completion of the Bus decoding and package list. The conditions are set as random edge, Memory depth is 128K, Sampling frequency is 200MHz. The compression function is activated.



Following picture shows the package list and waveforms display.

