



**孕龍科技股份有限公司**  
**ZEROPLUS TECHNOLOGY CO.,LTD**

# Instrument Business Department

## 7-SEGMENT Specification

Edition: V1.0

## Content

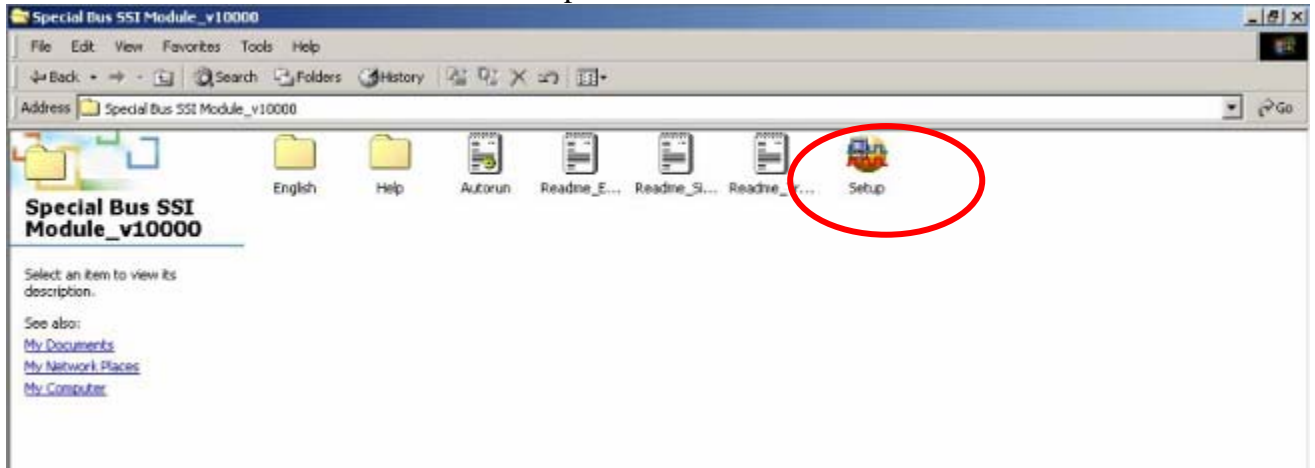
|   |                              |    |
|---|------------------------------|----|
| 1 | Software Installation.....   | 3  |
| 2 | User Interface .....         | 7  |
| 3 | Operating Instructions ..... | 10 |

## 1 Software Installation:

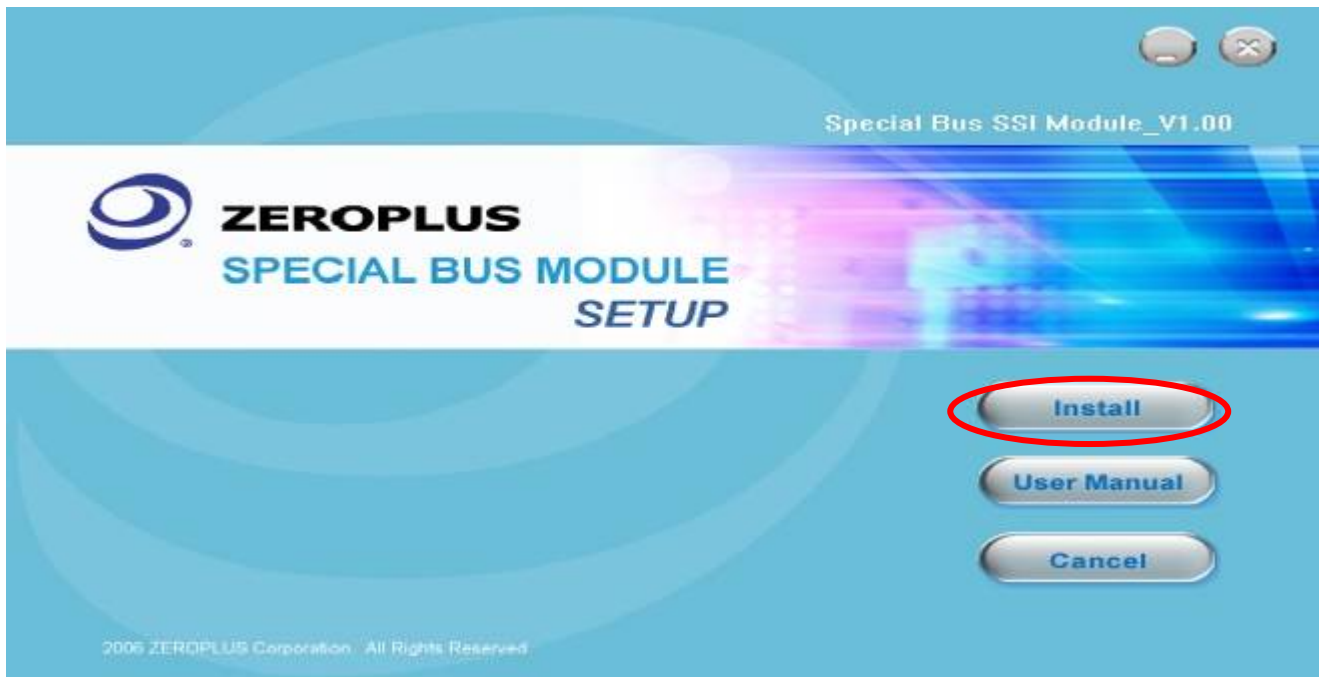
Please as the following steps to install the software.

※ Remark: The installed steps for all Buses are the same. You can complete installation by following procedures. Below images are examples to install SSI bus.

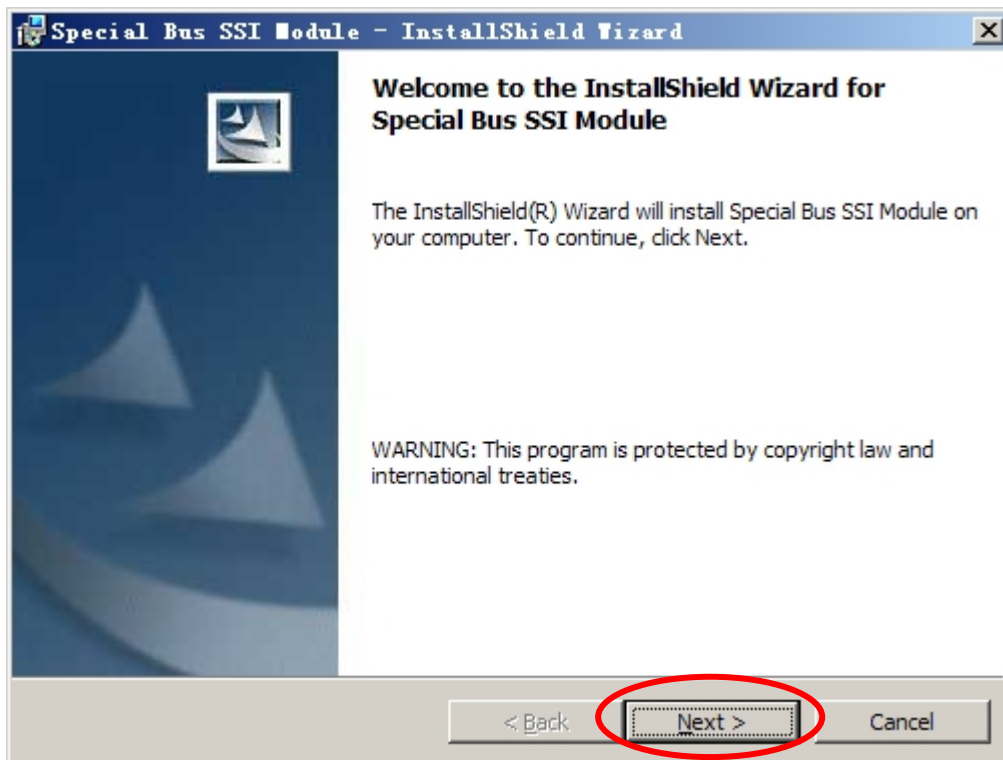
### STEP 1. 7-SEGMENT Bus Module setup.



### STEP 2. Click Install.



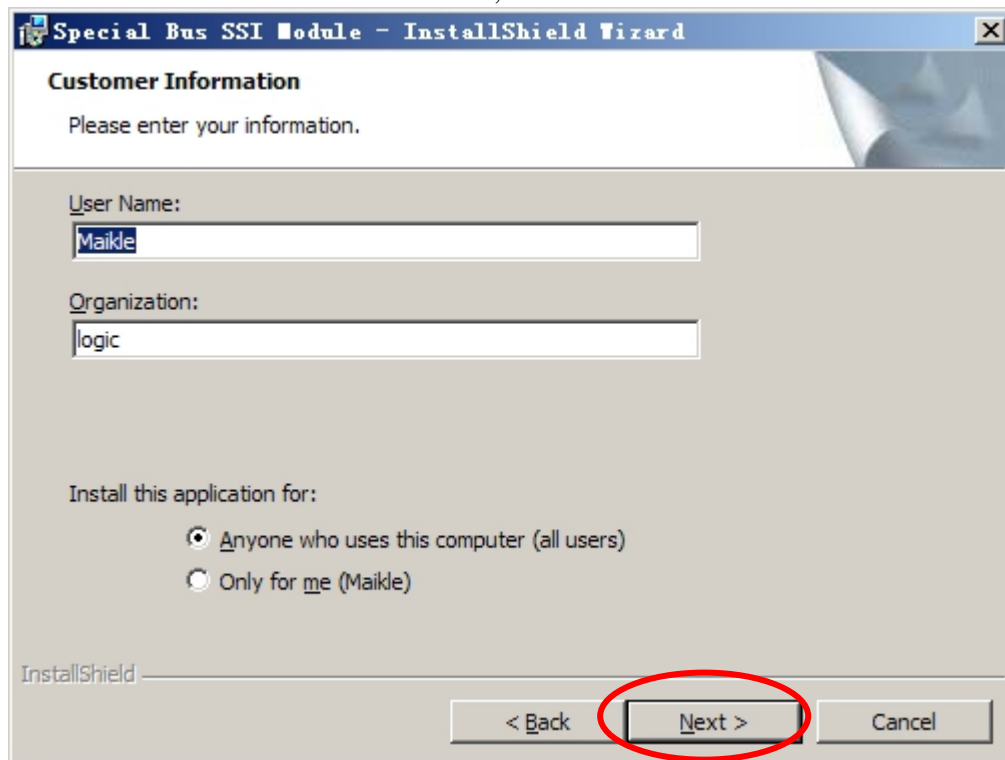
**STEP 3.** Click “Next”.



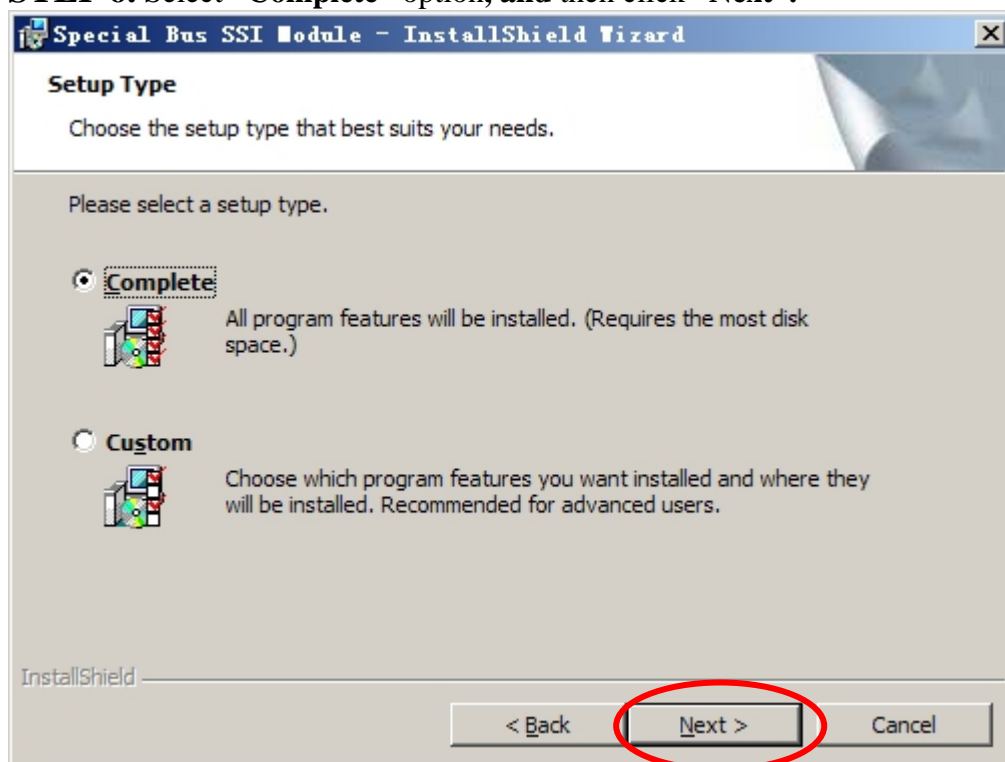
**STEP 4.** Click “I accept the terms in the license agreement” and press “Next”.



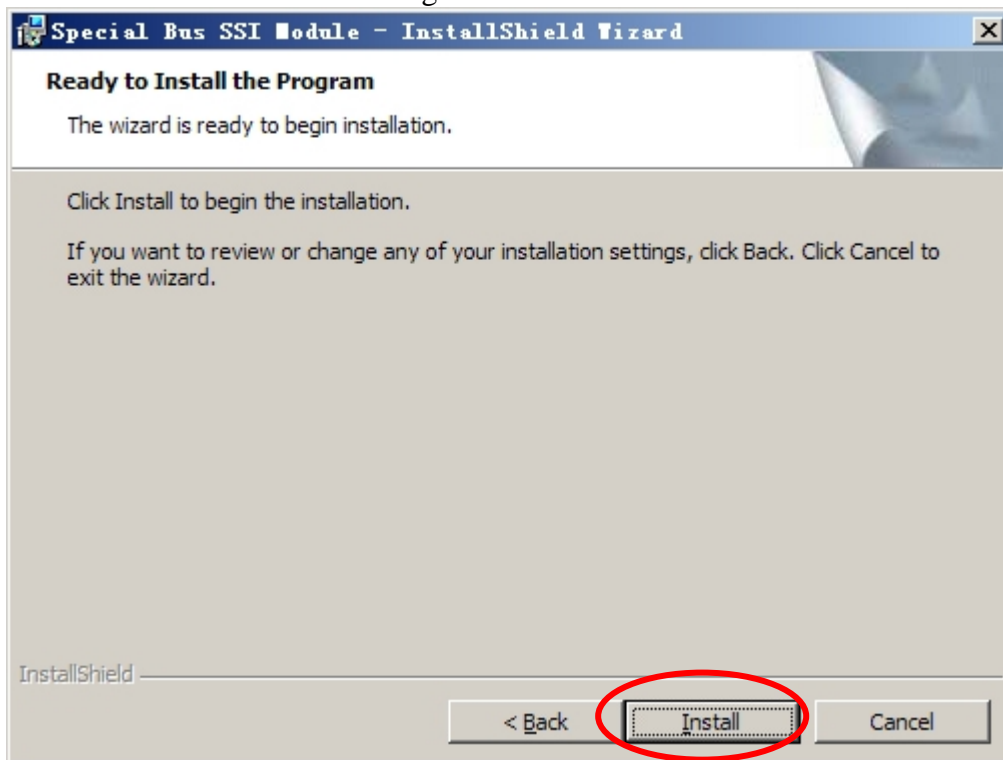
**STEP 5.** Fill in user Information, and then click “Next”.



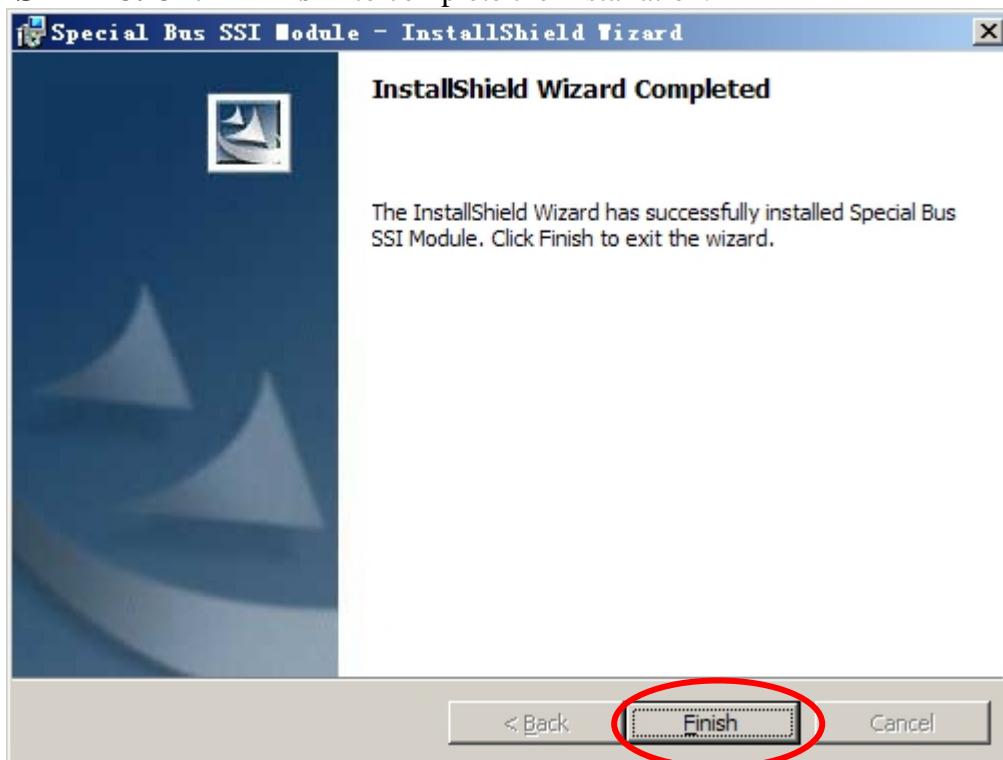
**STEP 6.** Select “Complete” option, and then click “Next”.



**STEP 7.** Click “**Install**” to begin installation.



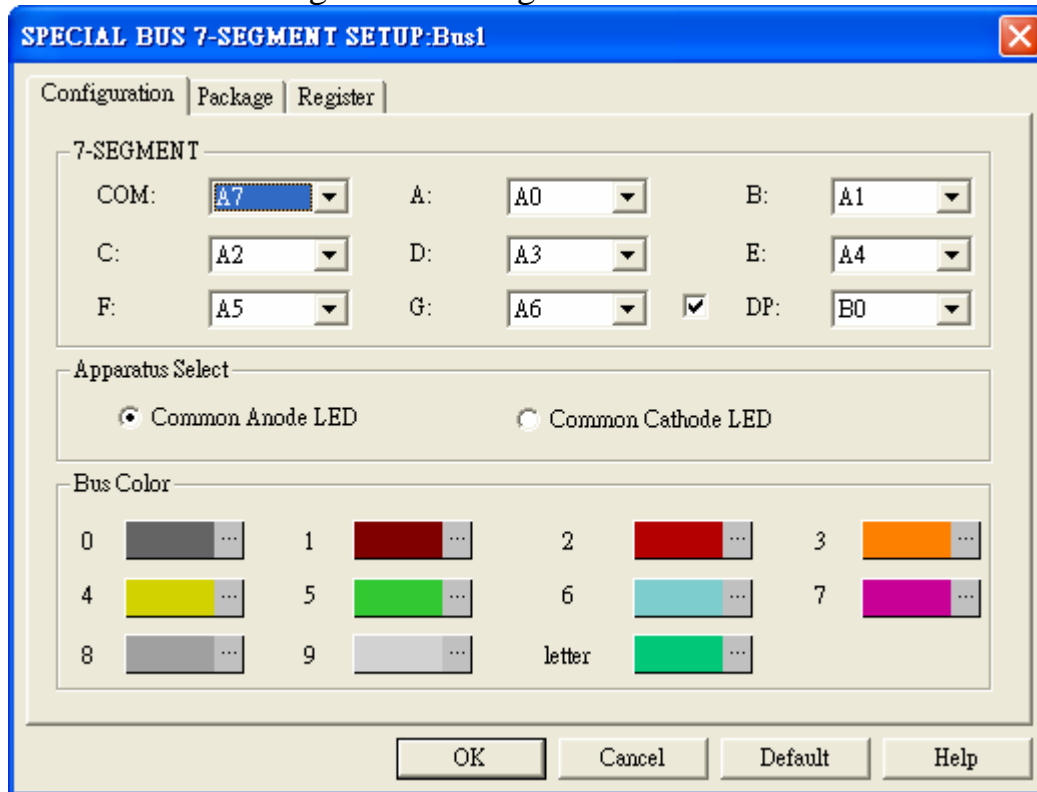
**STEP 8.** Click “**Finish**” to complete the Installation.



## 2 User Interface

Please refer to the below image to select options of setting 7-SEGMENT.

### 7-SEGMENT Configuration dialog box for Bus1



#### 7-SEGMENT MODULE channels selection:

COM: User can click the arrow next to the segment title and choose the appropriate channel, the default is A7.

A: User can click the arrow next to the segment title and choose the appropriate channel, the default is A0.

B: User can click the arrow next to the segment title and choose the appropriate channel, the default is A1.

C: User can click the arrow next to the segment title and choose the appropriate channel, the default is A2.

D: User can click the arrow next to the segment title and choose the appropriate channel, the default is A3.

E: User can click the arrow next to the segment title and choose the appropriate channel, the default is A4.

F: User can click the arrow next to the segment title and choose the appropriate channel, the default is A5.

G: User can click the arrow next to the segment title and choose the appropriate channel, the default is A6.

DP: User can click the arrow next to the segment title and choose the appropriate channel, the default is B0.

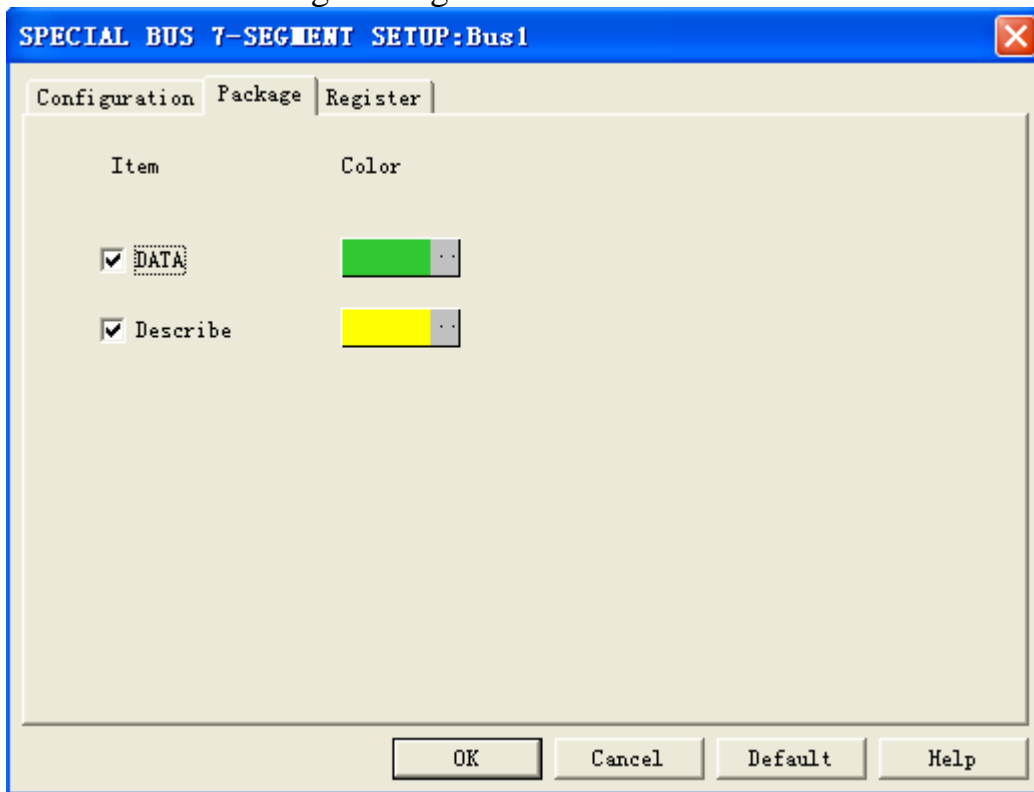
**Apparatus Options:**

The Common Anode LED and Common Cathode LED can be chosen, the default is the Common Anode LED.

**Bus Color setup:**

User can vary the Bus color. Red color indicates that the error occur.

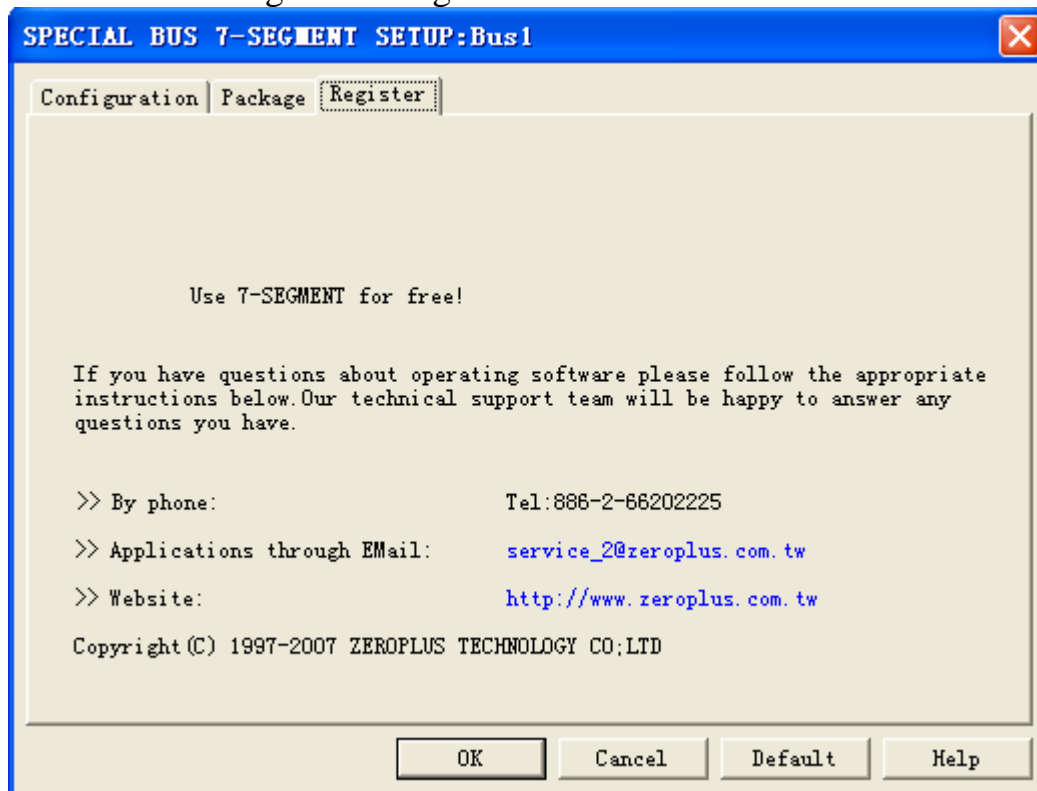
**7-SEGMENT Package dialog box.**



In the package dialog, the colors of Data and Describe..



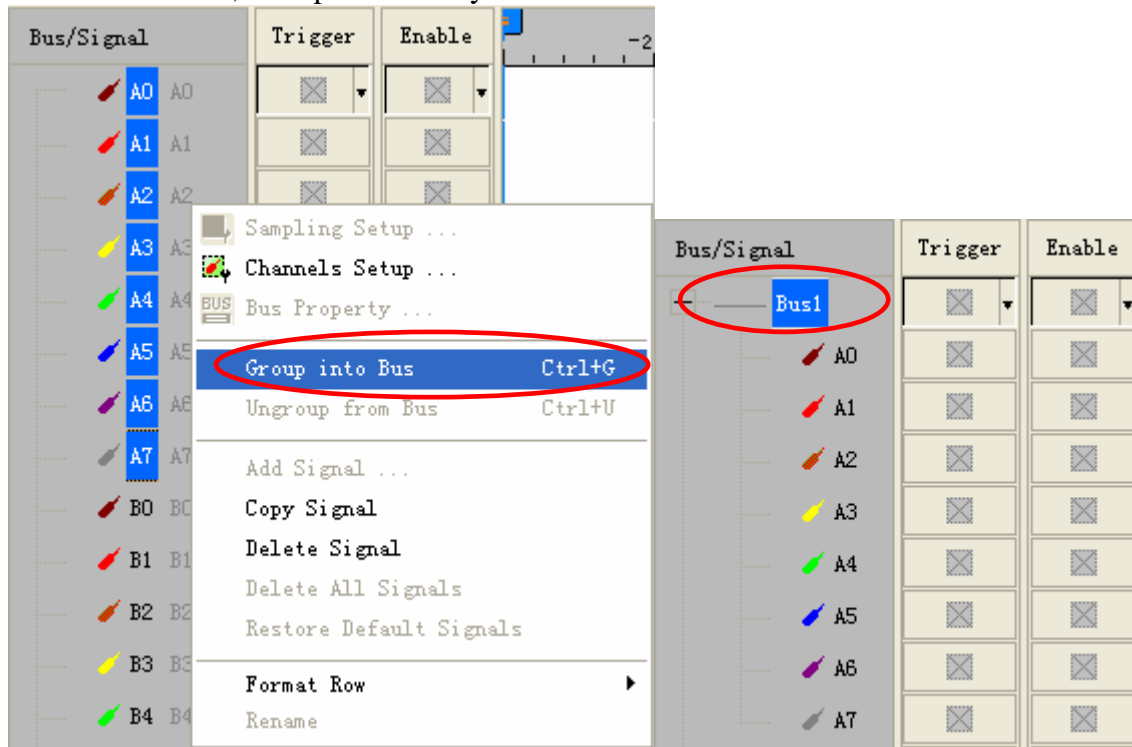
## 7-SEGMENT Register dialog box



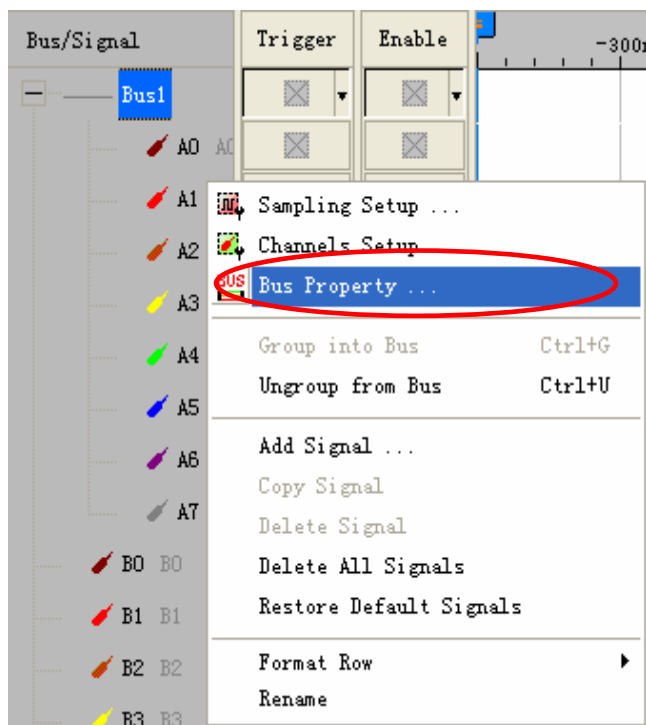
There is ZeroPlus company information written. If users have question about software Operations, user can contact ZeroPlus by Telephone or Email.

### 3 Operating Instructions

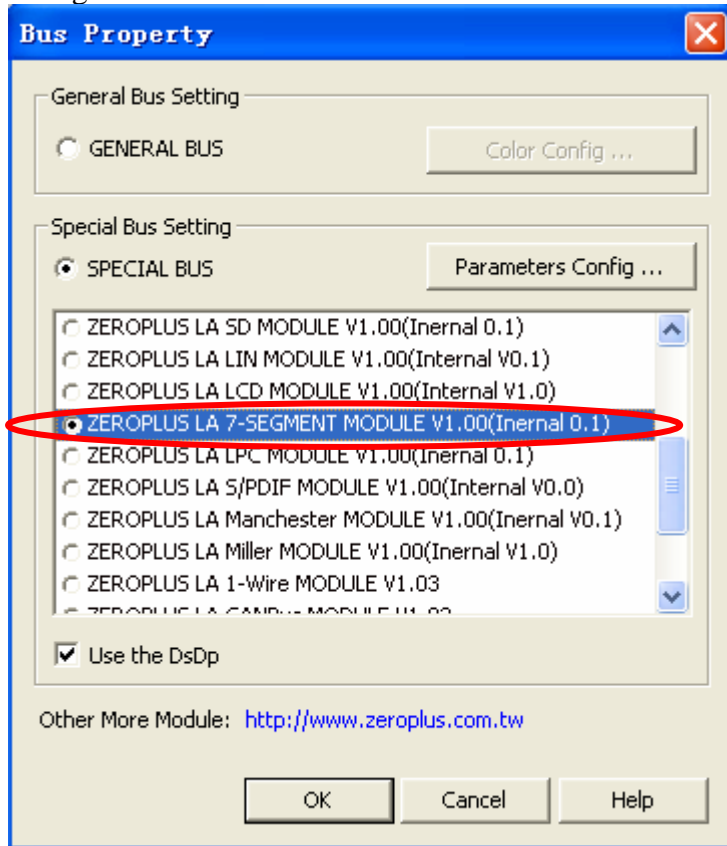
STEP 1. At first, Group the unanalyzed channels into bus 1.



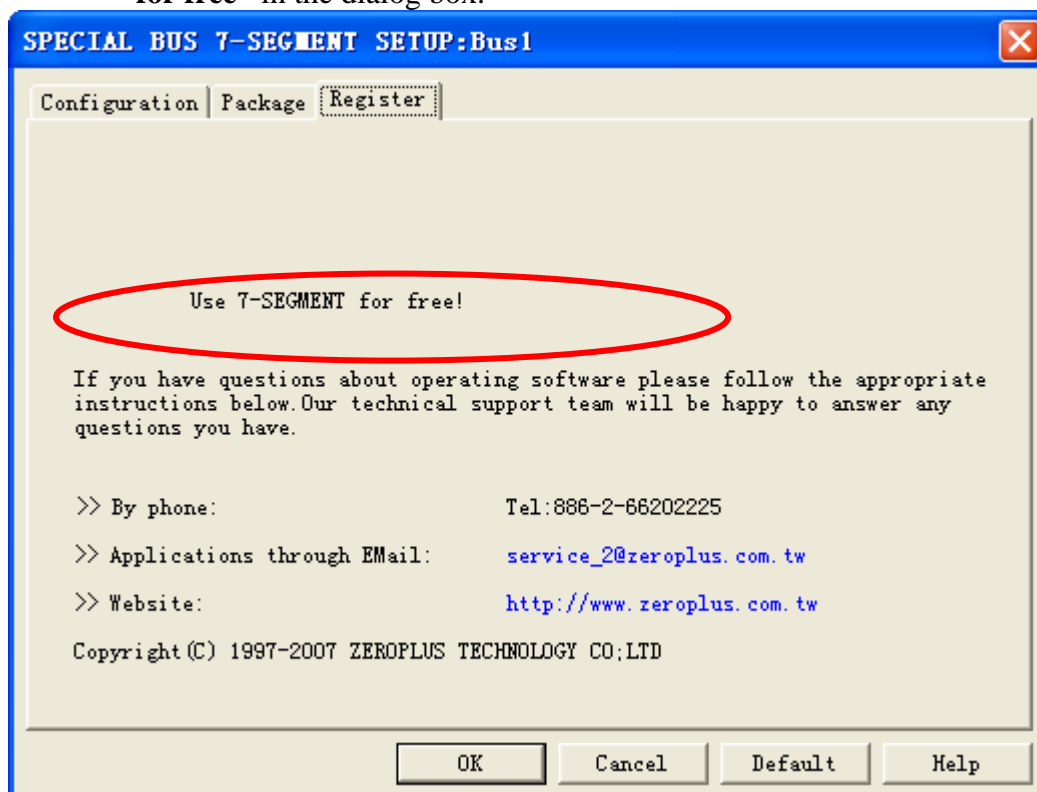
STEP 2. Select **Bus1**, then press the **Right Key** on mouse to list menu, next click the **Bus Property** to open Bus Property Dialog Box



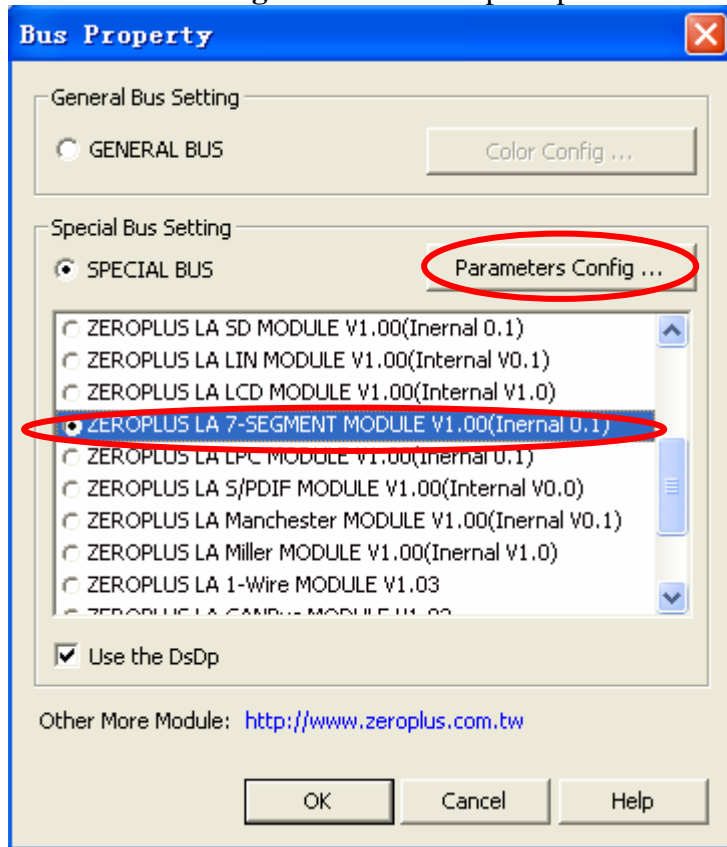
**STEP 3.** For Special Bus Parameter Configuration, select Special Bus, then choose **ZEROPLUS LA 7-SEGMENT V1.00 (Internal V0.1)**. Next click “Parameter Configuration” to open the configure dialogue.



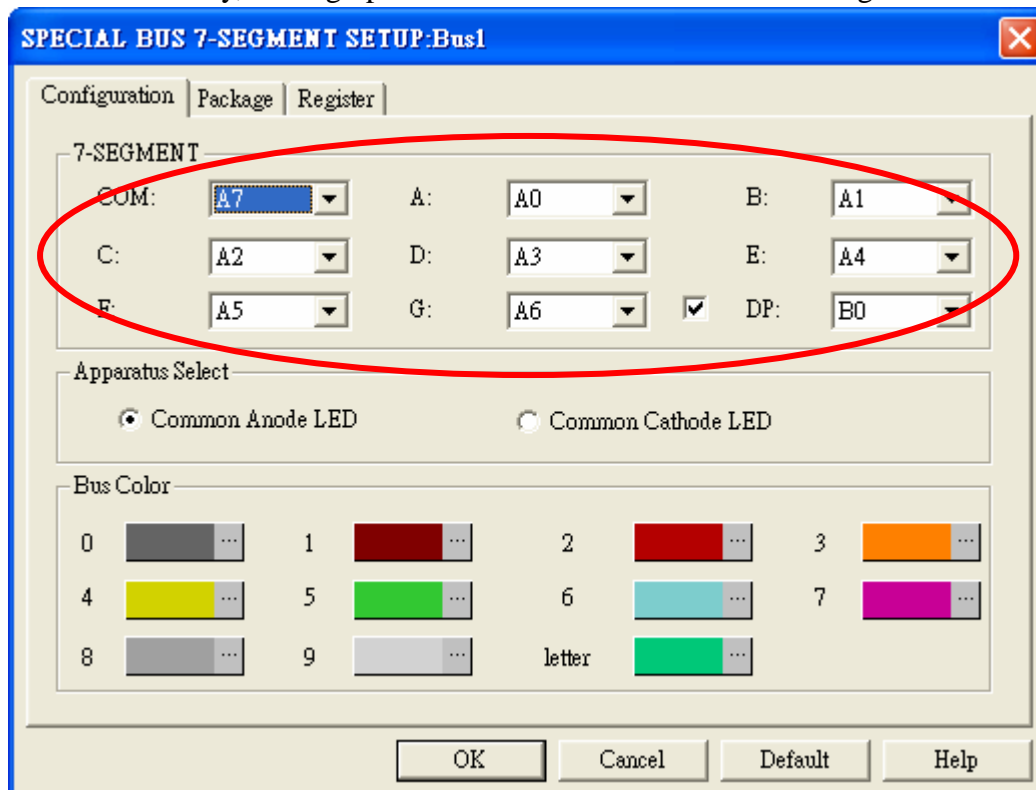
**STEP 4.** Resister user information: At Register sheet, user can see that “**7-SEGMENT for free**” in the dialog box.



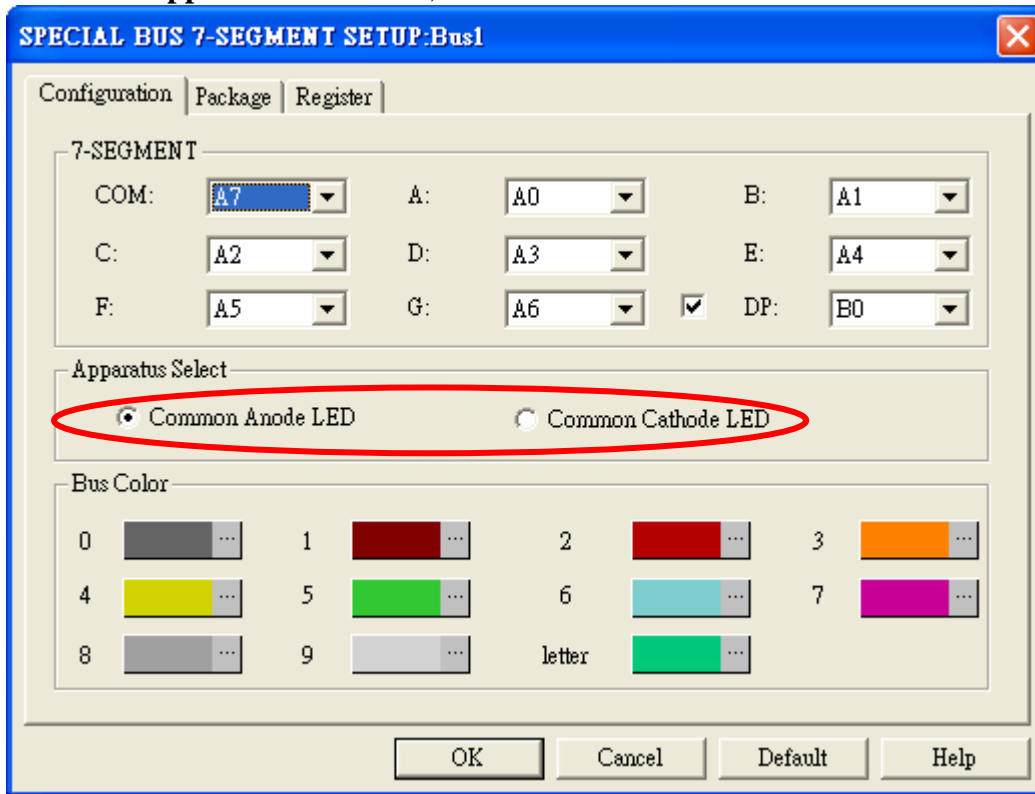
**STEP 5.** After pressing “OK” on Register Dialog, it turns to **Bus Property** dialogue box. Click “**Parameter Configuration**” to set up the parameter of special bus.



**STEP 6.** Firstly, Setting up **7-SEGMENT** channels in the Configuration dialog box.

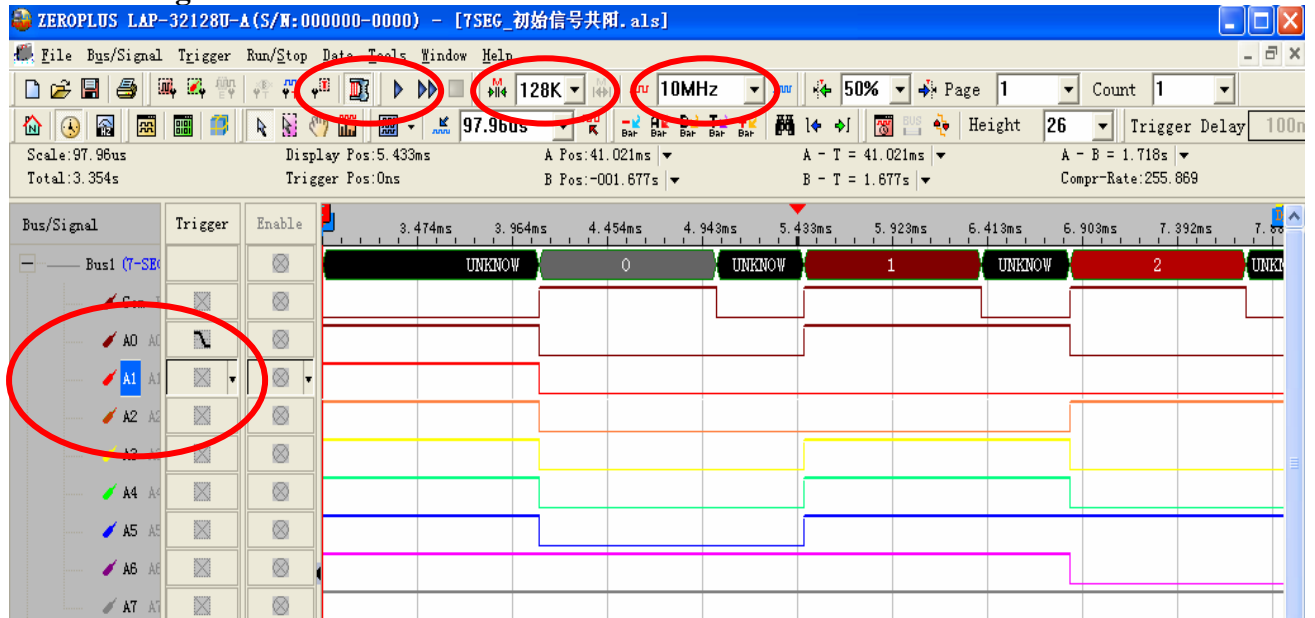


**STEP 7. Apparatus Selection** , the default is Common Anode LED.



**STEP 8.** Following picture shows that the completion of the Bus decoding and packet listThe conditions are set as that A0 is the falling edge, Memory depth is 1M, Sampling frequency is 10MHz and the compression is activated.

**Bus decoding**



### Packet list

